

E8	PART NUMBER	DESCRIPTION	QTY.
1	A106320	TAIL 3/4"	2
2	A106533	TAIL 1 1/4" TO 32MM	1
3	A116313	ELBOW D13 FOR FLY NUT 3/4"	8
4	A116320	ELBOW 3/4" - 20MM HOSE	2
5	A116533	ELBOW 1 1/4" - 32MM HOSE	1
6	A1302050	TEE 1 1/4"	8
7	A200030	FLY NUT 3/4"	12
8	A200050	FLY NUT 1 1/4"	2
9	A245035	REDUCER 3/4" MALE - 1 1/4" FEMALE	8
10	A250050	NIPPLE 1 1/4"	10
11	AB243000-110A	STEERING CASTOR KIT SHADOW BOOM	1
12	AB243000-200	FIRST ARM WING KIT SHADOW BOOM	1
13	AB243000-400	OUTRIGGER SUPPORT KIT SHADOW BOOM	1
14	AB243000-700A	BOOM BUMPER KIT 18-36M	1
15	AB243130-300A	SPRAYBAR BRKT WITH CAMERA BRKT	6
16	AB243130-300B	BRACKET SPRAYBAR	2
17	AB243204-110	50MM PIN	1
18	AG10031	O RING 3/4"	12
19	AG10051	O RING 1 1/4"	2
20	HP-015	HYDRAULIC CYLINDER 2.0 X 8	1
21	MP-320	2 SENSOR NOZZLE BRK	1
22	MP-321	3 SENSOR NOZZLE BRK.	2
23	MP-330	NOZZLE PROTECTION RAIL 10 HOLES	1
24	MP-331	NOZZLE PROTECTION RAIL 15 HOLES	2
25	MP-340	SENSOR BRACKET	7
26	MP-340A	SENSOR BRACKET	1
27	MP-350	POLYPIPE 1 1/4" 950MM	7
28	MP-354	3/4" 2200 POLYTUBE	14
29	MP-360	END CAP 15mm JOHN GUEST	6
30	MP-361	TEE 15mm JOHN GUEST	6
31	MP-361	TEE 15MM JOHN GUEST	2
33	PH4322	SOCKET 3/4"	12
34	QJ39685-2-500-N	TEE BODY	16
35	UP-429	CLAMP PP SINGLE 43MM	14
36	UP-431	3/4" Stauff Clamp	28
37	WI46004407	WEEDIT SENSOR VER201 1	8
38	WI46004491L	195MM LONG **SPARE COMES IN 1	29
39	WI46004491L	70MM LONG **SPARE COMES IN 1 METRE	16
40	WI6004450	SOLENOID SET COMPLETE NOZZLE ASSY	40
41	WI6004492	PUSH FIT 15MM TO HOSE CON 12MM	6

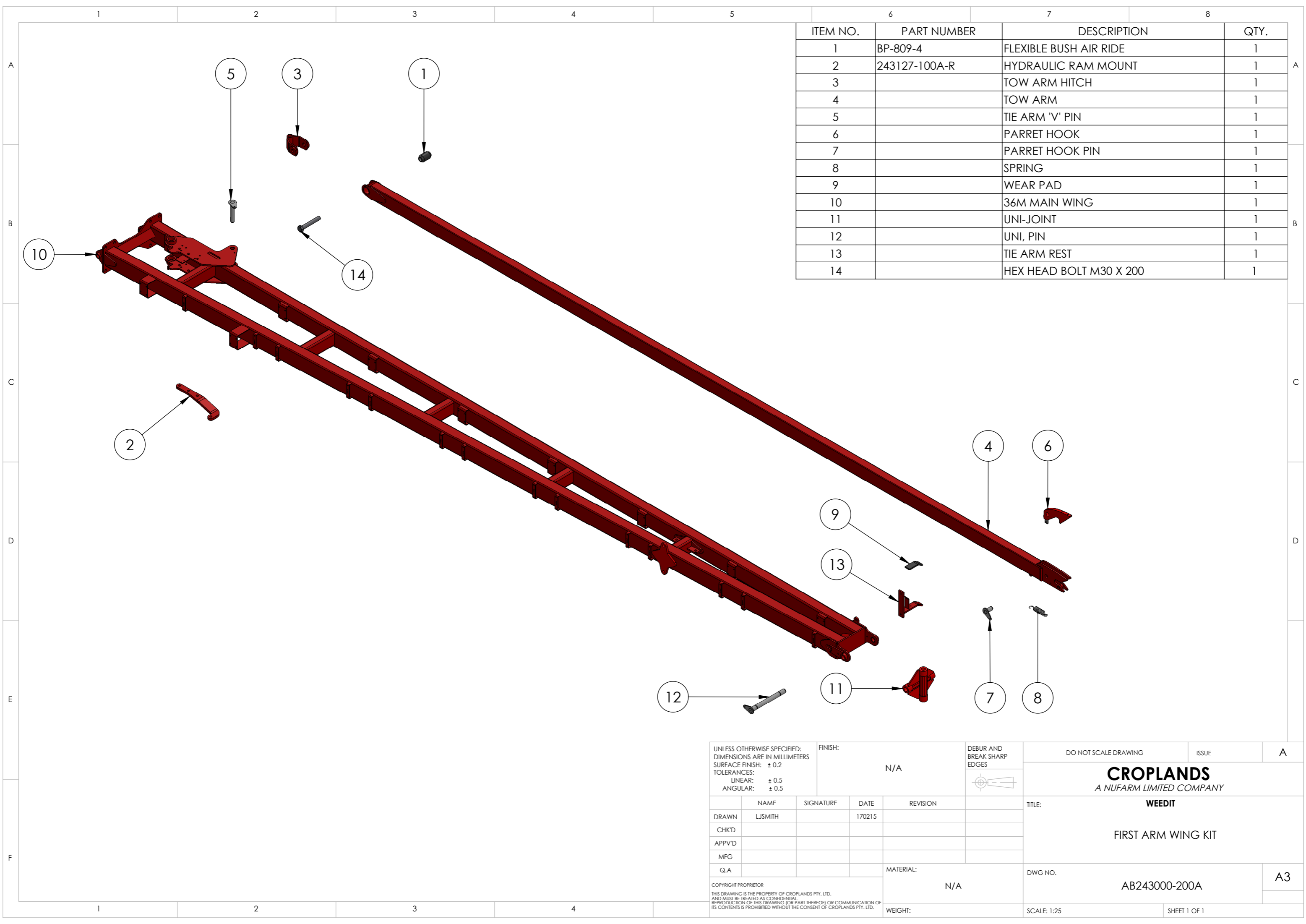
MOUNTING OF AB243000-700A ON OPPOSITE ARM

UNLESS OTHERWISE SPECIFIED: DIMENSIONS ARE IN MILLIMETERS SURFACE FINISH: ± 0.2 TOLERANCES: LINEAR: ± 0.5 ANGULAR: ± 0.5		FINISH: N/A	DEBUR AND BREAK SHARP EDGES	DO NOT SCALE DRAWING	ISSUE	A
DRAWN LJSMITH			SIGNATURE	DATE 17022015	REVISION	
CHKD						
APPVD						
MFG						
Q.A						
MATERIAL: N/A			DWG NO. SERIES 3 INNER ARM		A2	
WEIGHT:			SCALE: 1:22		SHEET 1 OF 1	

COPYRIGHT PROPRIETOR
 THE DRAWING IS THE PROPERTY OF CROPLANDS PTY. LTD.
 ALL RIGHTS RESERVED. NO PART OF THIS DRAWING OR COMMUNICATION OF IT
 MAY BE REPRODUCED OR TRANSMITTED IN ANY FORM OR BY ANY MEANS
 WITHOUT THE WRITTEN PERMISSION OF CROPLANDS PTY. LTD.

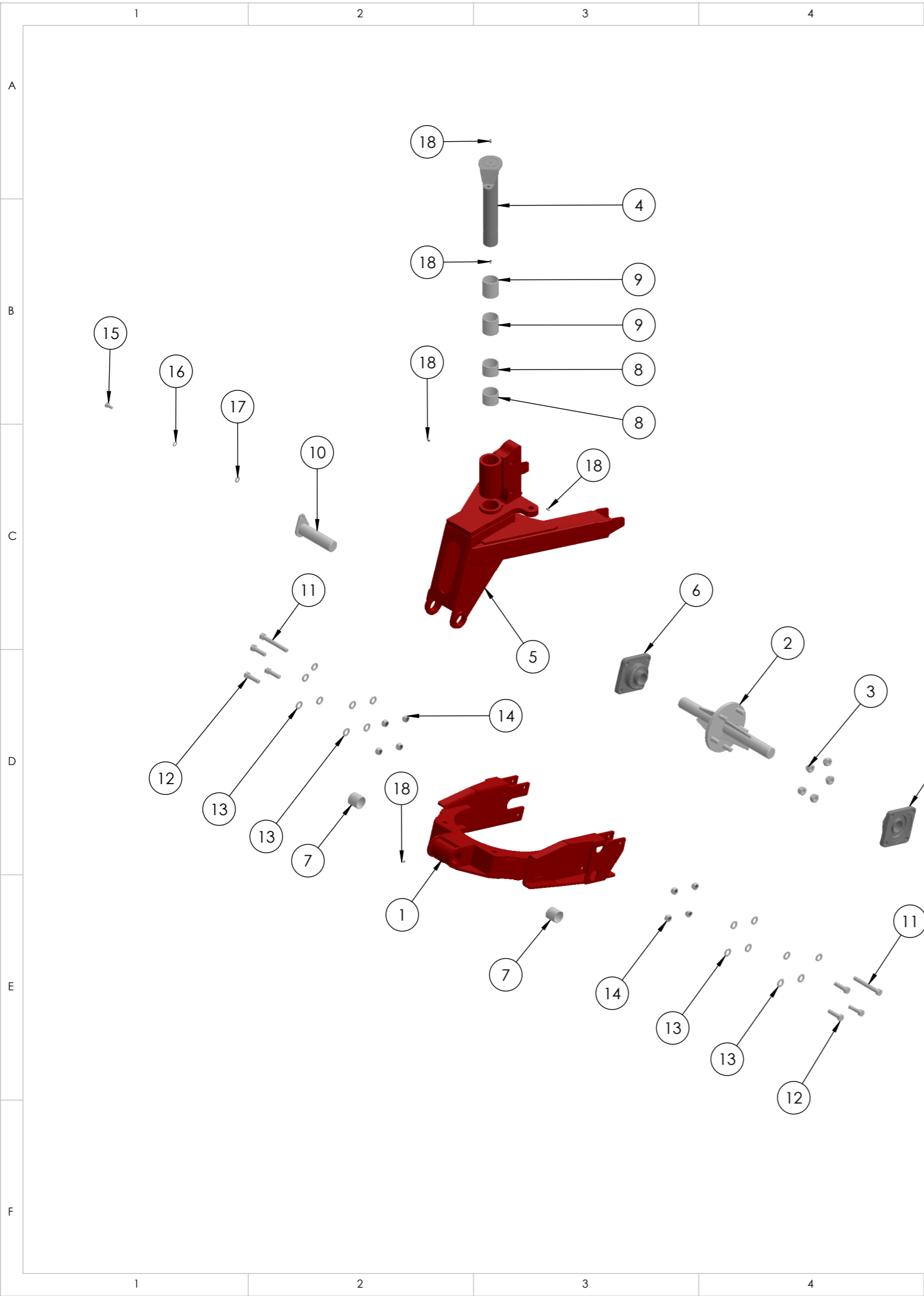
CROPLANDS
A NUFARM LIMITED COMPANY

TITLE:
WEEDIT
SERIES 3 INNER ARM ASSEMBLY DRAWING



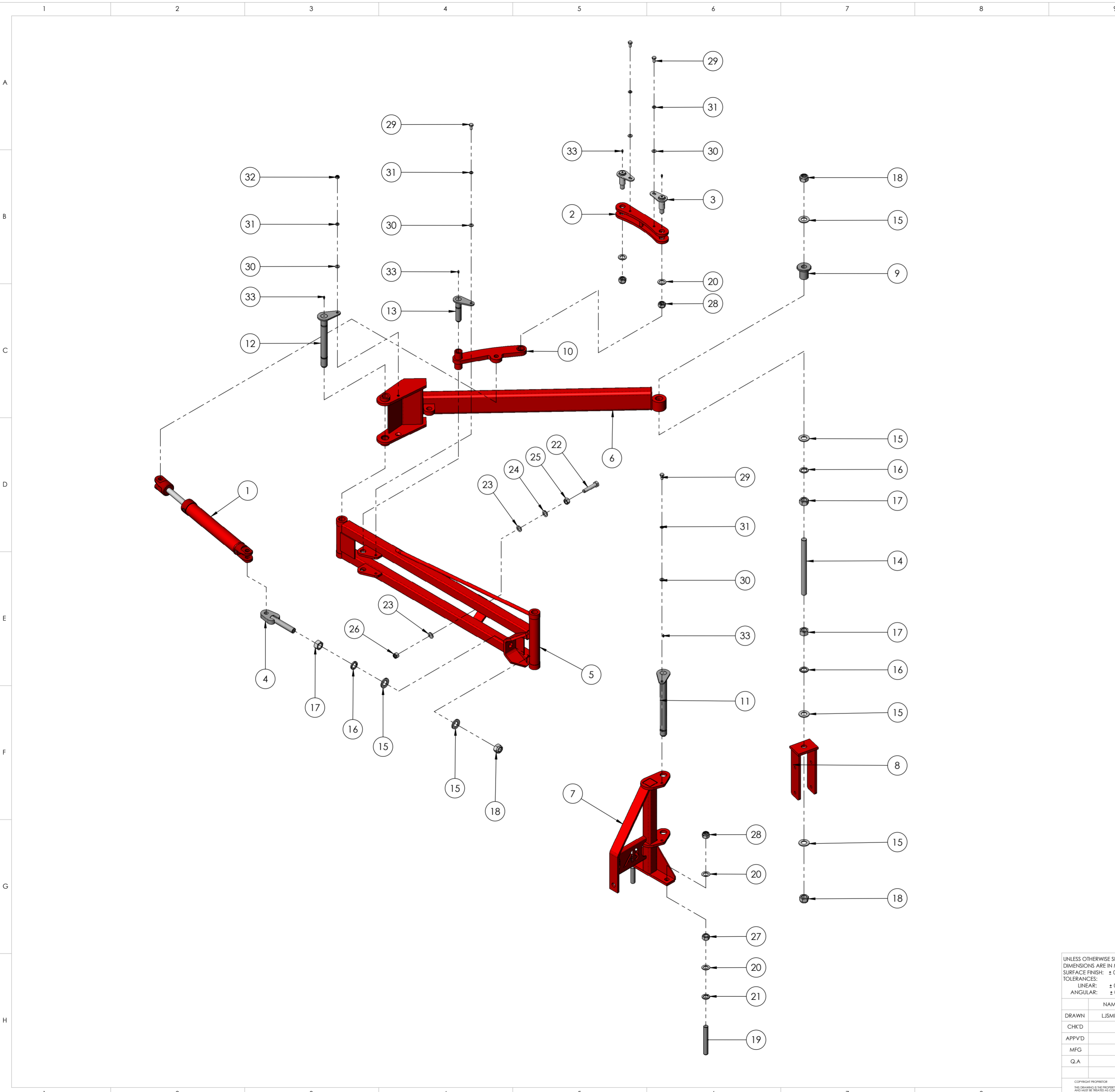
ITEM NO.	PART NUMBER	DESCRIPTION	QTY.
1	BP-809-4	FLEXIBLE BUSH AIR RIDE	1
2	243127-100A-R	HYDRAULIC RAM MOUNT	1
3		TOW ARM HITCH	1
4		TOW ARM	1
5		TIE ARM 'V' PIN	1
6		PARRET HOOK	1
7		PARRET HOOK PIN	1
8		SPRING	1
9		WEAR PAD	1
10		36M MAIN WING	1
11		UNI-JOINT	1
12		UNI, PIN	1
13		TIE ARM REST	1
14		HEX HEAD BOLT M30 X 200	1

UNLESS OTHERWISE SPECIFIED: DIMENSIONS ARE IN MILLIMETERS SURFACE FINISH: ± 0.2 TOLERANCES: LINEAR: ± 0.5 ANGULAR: ± 0.5		FINISH: N/A	DEBUR AND BREAK SHARP EDGES 	DO NOT SCALE DRAWING	ISSUE	A																							
<table border="1"> <thead> <tr> <th>NAME</th> <th>SIGNATURE</th> <th>DATE</th> <th>REVISION</th> </tr> </thead> <tbody> <tr> <td>DRAWN</td> <td>LJSMITH</td> <td>170215</td> <td></td> </tr> <tr> <td>CHK'D</td> <td></td> <td></td> <td></td> </tr> <tr> <td>APPV'D</td> <td></td> <td></td> <td></td> </tr> <tr> <td>MFG</td> <td></td> <td></td> <td></td> </tr> <tr> <td>Q.A</td> <td></td> <td></td> <td></td> </tr> </tbody> </table>			NAME	SIGNATURE	DATE	REVISION	DRAWN	LJSMITH	170215		CHK'D				APPV'D				MFG				Q.A				<p>CROPLANDS A NUFARM LIMITED COMPANY</p> <p>TITLE: WEEDIT</p> <p>FIRST ARM WING KIT</p>		
NAME	SIGNATURE	DATE	REVISION																										
DRAWN	LJSMITH	170215																											
CHK'D																													
APPV'D																													
MFG																													
Q.A																													
<small>COPYRIGHT PROPRIETOR THIS DRAWING IS THE PROPERTY OF CROPLANDS PTY. LTD. AND MUST BE TREATED AS CONFIDENTIAL. REPRODUCTION OF THIS DRAWING (OR PART THEREOF) OR COMMUNICATION OF ITS CONTENTS IS PROHIBITED WITHOUT THE CONSENT OF CROPLANDS PTY. LTD.</small>			MATERIAL: N/A		DWG NO. AB243000-200A	A3																							
			WEIGHT:	SCALE: 1:25	SHEET 1 OF 1																								



ITEM NO.	PART NUMBER	DESCRIPTION	QTY.
1	AB243901-110	STEERING WHEEL SWING ARM	1
2	AB243903-100	WEEDIT BOOM SUSPENSION AXLE	1
3	MP-392	WHEEL NUT M16 X 1.5	5
4		50MM PIN	1
5		TOP MOUNT	1
6		40MM BEARING 102MM MOUNTING HOLES	2
7		PERMAGLIDE BUSH 40 X 40	2
8		PERMAGLIDE BUSH 50 X 40	2
9		PERMSGSLIDE BUSH 50 X 60	2
10		STEERING WHEEL SWING ARM PIN	1
11		M14 X 110 BOLT HT ZP	2
12		M14 X 50 BOLT HT ZP	6
13		M14 FLAT WASHER ZP	16
14		M14 NYLOC NUT HT ZP	8
15		M10 X 20 SET SCREW HT ZP	1
16		M10 SPRING WASHER ZP	1
17		M10 FLAT WASHER ZP	1
18		M6 GREASE NIPPLE	5

UNLESS OTHERWISE SPECIFIED: DIMENSIONS ARE IN MILLIMETERS SURFACE FINISH: ± 0.2 TOLERANCES: LINEAR: ± 0.5 ANGULAR: ± 0.5		FINISH: N/A	DEBUR AND BREAK SHARP EDGES 	DO NOT SCALE DRAWING	ISSUE	B
TITLE: CROPLANDS A NUFARM LIMITED COMPANY WEEDIT STEERING WHEEL ASSMEBLY VERSION 2						
DRAWN LJSMITH		SIGNATURE	DATE 180914	REVISION	DWG NO. AB243000-110A	A3
CHK'D						
APPV'D						
MFG						
Q.A				MATERIAL: N/A	SCALE: 1:15	SHEET 1 OF 1
COPYRIGHT PROPRIETOR THIS DRAWING IS THE PROPERTY OF CROPLANDS PTY. LTD. AND MUST BE TREATED AS CONFIDENTIAL. REPRODUCTION OF THIS DRAWING (OR PART THEREOF) OR COMMUNICATION OF ITS CONTENTS IS PROHIBITED WITHOUT THE CONSENT OF CROPLANDS PTY. LTD.				WEIGHT:		

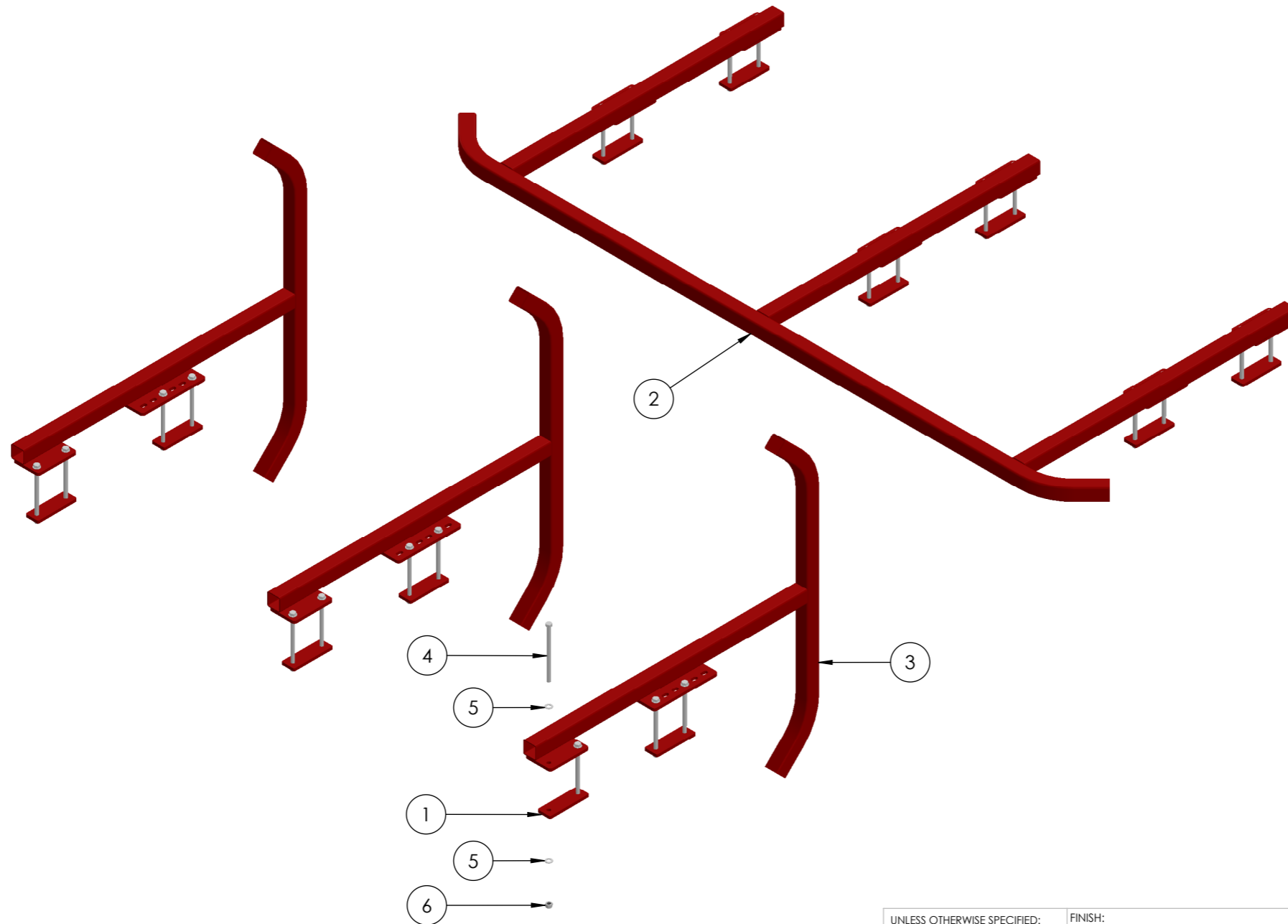



ITEM NO.	PART NUMBER	DESCRIPTION	QTY.
1	HP-012	HYDRAULIC CYLINDER 2.0 X 10	1
2		DOUBLE LINK PLATE	1
3		LINK PLATE PIN	2
4		ADJUSTMENT SCREW	1
5		FIRST SUPPORT ARM LH	1
6		SECOND ARM LH	1
7		SUPPORT ARM POVIT	1
8		SUPPORT ARM HITCH	1
9		POVIT POINT	1
10		SINGLE LINK ARM	1
11		PIN	1
12		PIN	1
13		PIN	1
14		M24 X 300 THREAD	1
15		M24 FLAT WASHER ZP	6
16		M24 SPRING WASHER ZP	3
17		M24 HEX NUT HT ZP	3
18		M24 NYLOC NUT ZP	3
19		M20 X 150 THREAD	2
20		M20 FLAT WASHER ZP	6
21		M20 SPRING WASHER ZP	2
22		M16 X 75 HEX HEAD SET SCREW HT ZP	1
23		M16 FLAT WASHER ZP	2
24		M16 SPRING WASHER	1
25		M16 HEX NUT HT ZP	1
26		M16 NYLOC NUT HT ZP	1
27		M20 HALF NUT ZP	2
28		M20 NYLOC NUT HT ZP	4
29		M10 X 20 SET SCREW HT ZP	4
30		M10 FLAT WASHER ZP	5
31		M10 SPRING WASHER ZP	5
32		M10 NYLOC NUT HT ZP	1
33		M6 GREASE NIPPLE	5

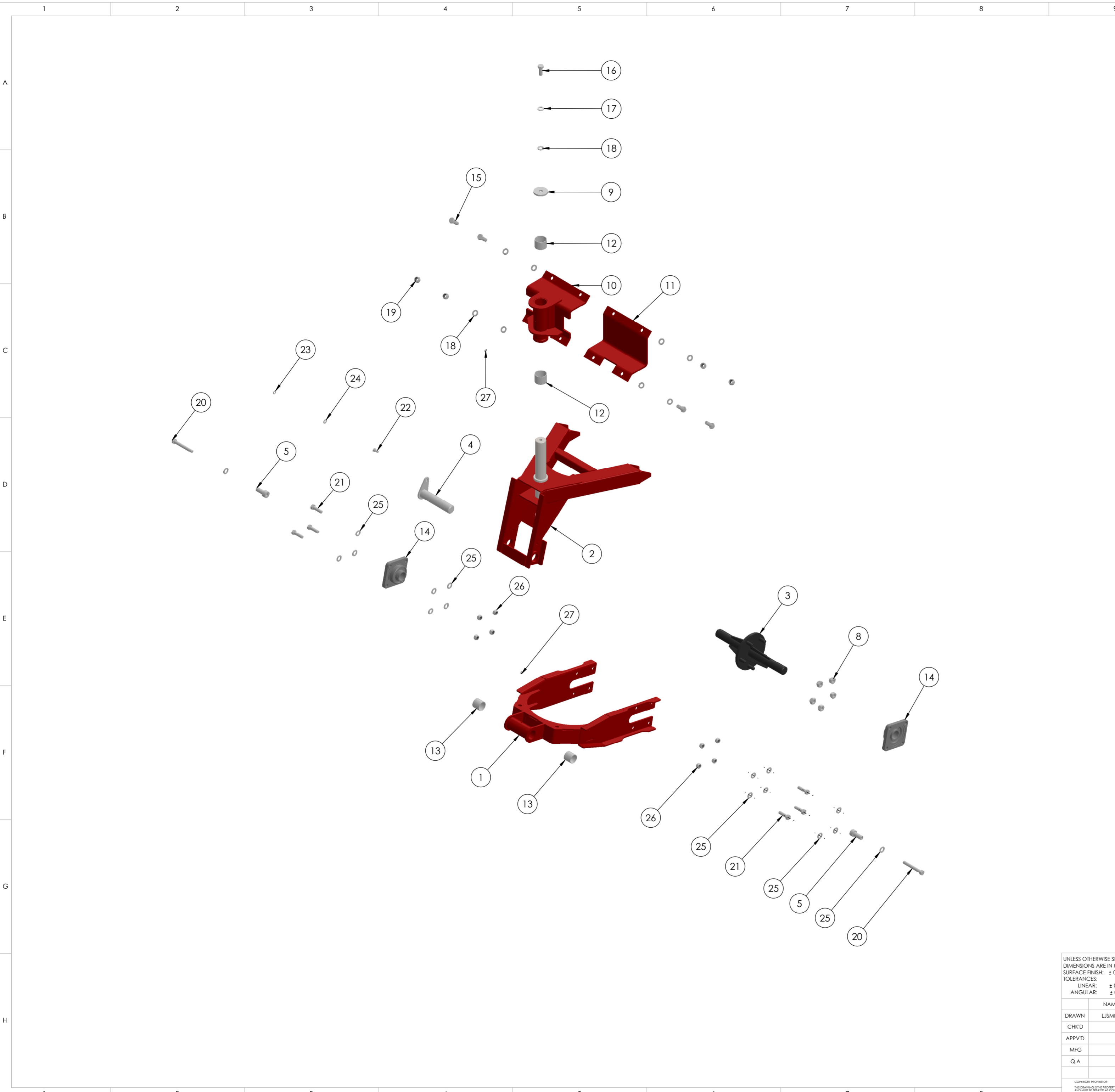
L.H. SHOWN, R.H. REQUIRED FOR COMPLETE BOOM

UNLESS OTHERWISE SPECIFIED: DIMENSIONS ARE IN MILLIMETERS SURFACE FINISH: ± 0.2 TOLERANCES: LINEAR: ± 0.5 ANGULAR: ± 0.5		FINISH: N/A	DEBUR AND BREAK SHARP EDGES	DO NOT SCALE DRAWING	ISSUE	A
DRAWN LJSMITH			SIGNATURE	DATE 030715	TITLE: CROPLANDS A NUFARM LIMITED COMPANY WEEDIT OUTRIGGER DOCKING KIT L.H.	
CHKD					DWG NO. AB243000-400L	
APPVD					A2	
MFG					SCALE: 1:12	
Q.A				MATERIAL: N/A	SHEET 1 OF 1	
<small>COPYRIGHT PROPRIETOR ALL RIGHTS RESERVED. THE PROPERTY OF CROPLANDS PTY. LTD. REPRODUCTION OF THIS DRAWING OR PART THEREOF OR COMMUNICATION OF ITS CONTENTS IN ANY MANNER WITHOUT THE CONSENT OF CROPLANDS PTY. LTD.</small>						

ITEM NO.	PART NUMBER	DESCRIPTION	QTY.
1	AB243000-700-1	MOUNTING PLATE	12
2	AB243000-700A-1-1	HORIZONTAL BUMPER	1
3	AB243000-700A-2-1	VERTICAL BUMPER	3
4		M12 X 150 BOLT HT ZP	24
5		M12 FLAT WASHER ZP	48
6		M12 NYLOC NUT HT ZP	24



UNLESS OTHERWISE SPECIFIED: DIMENSIONS ARE IN MILLIMETERS SURFACE FINISH: ± 0.2 TOLERANCES: LINEAR: ± 0.5 ANGULAR: ± 0.5		FINISH: N/A	DEBUR AND BREAK SHARP EDGES 	DO NOT SCALE DRAWING	ISSUE	A
DRAWN LJSMITH			SIGNATURE	DATE 230615	REVISION	TITLE: CROPLANDS A NUFARM LIMITED COMPANY WEEDIT BOOM BUMPER KIT 18-36M
CHK'D						
APPV'D						
MFG						
Q.A					MATERIAL: N/A	DWG NO. AB243000-700A
COPYRIGHT PROPRIETOR THIS DRAWING IS THE PROPERTY OF CROPLANDS PTY. LTD. AND MUST BE TREATED AS CONFIDENTIAL. REPRODUCTION OF THIS DRAWING (OR PART THEREOF) OR COMMUNICATION OF ITS CONTENTS IS PROHIBITED WITHOUT THE CONSENT OF CROPLANDS PTY. LTD.			WEIGHT:		SCALE: 1:15	SHEET 1 OF 1



ITEM NO.	PART NUMBER	DESCRIPTION	QTY.
1	AB243901-100	WEEDIT OUTER CASTOR SWING ARM	1
2	AB243902-004	OUTER CASTOR WHEEL PIVOT	1
3	AB243903-100	WEEDIT BOOM SUSPENSION AXLE	1
4	AB243904-100	OUTER WHEEL SWING ARM PIN	1
5	AB243905-100	SHOCK ABSORBER FERULE	2
6	HP-202R	WHEEL 12Lx15 MULTI RIB 5/140	1
7	MP-391A	SHOCK ABSORBER HI RISE W/ COIL	2
8	MP-392	WHEEL NUT M16 X 1.5	5
9		RETAINING PLATE	1
10		PIVOT TOP PLATE	1
11		PIVOT BOTTOM PLATE	1
12		PERMAGLIDE BUSH 50 X 40	2
13		PERMAGLIDE BUSH 40 X 40	2
14		40MM BEARING 102MM MOUNTING HOLES	2
15		M16 X 45 HEX HEAD SET SCREW HT ZP	4
16		M16 X 40 HEX HEAD SET SCREW	1
17		M16 SPRING WASHER	1
18		M16 FLAT WASHER ZP	9
19		M16 NYLOC NUT HT ZP	4
20		M14 X 110 BOLT HT ZP	2
21		M14 X 50 BOLT HT ZP	6
22		M10 X 20 SET SCREW HT ZP	1
23		M10 SPRING WASHER ZP	1
24		M10 FLAT WASHER ZP	1
25		M14 FLAT WASHER ZP	16
26		M14 NYLOC NUT HT ZP	8
27		M6 GREASE NIPPLE	2

UNLESS OTHERWISE SPECIFIED: DIMENSIONS ARE IN MILLIMETERS SURFACE FINISH: ± 0.2 TOLERANCES: LINEAR: ± 0.5 ANGULAR: ± 0.5		FINISH: N/A	DEBUR AND BREAK SHARP EDGES	DO NOT SCALE DRAWING	ISSUE	A
DRAWN LJSMITH			SIGNATURE	DATE 230615	TITLE: WEEDIT SERIES 2 CASTOR WHEEL AS ORDERED	
CHKD					DWG NO. AB243000-120A	
APPVD					A2	
MFG					SCALE: 1:12	
Q.A				MATERIAL: N/A	SHEET 1 OF 1	
<small>COPYRIGHT PROPRIETOR THE DRAWING IS THE PROPERTY OF CROPLANDS PTY. LTD. REPRODUCTION OF THIS DRAWING FOR PART NUMBER OR COMMUNICATION OF ITS CONTENTS IS PROHIBITED WITHOUT THE CONSENT OF CROPLANDS PTY. LTD.</small>						

C4	PART NUMBER	DESCRIPTION	QTY.
1	BK-2500	WEEDIT INTER ARM MOUNTING BOLTS 36M	1
2	BP-809-4	FLEXIBLE BUSH AIR RIDE	2
3		36M INTER BOOM	1
4		HEX HEAD BOLT M30 X 200	2

A

A

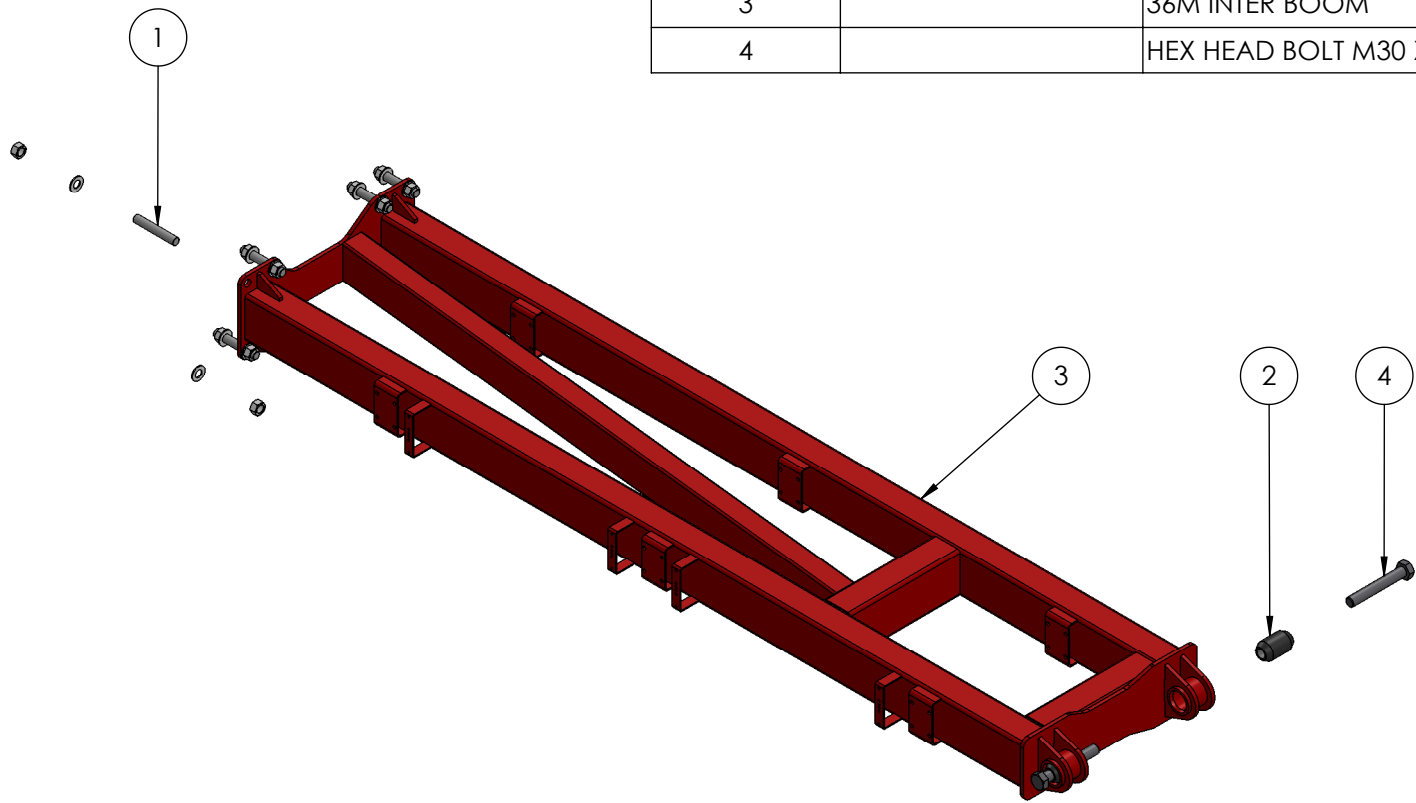
B

B

C

C

D



UNLESS OTHERWISE SPECIFIED: DIMENSIONS ARE IN MILLIMETERS SURFACE FINISH: ± 0.2 TOLERANCES: LINEAR: ± 0.5 ANGULAR: ± 0.5		FINISH: N/A	DEBUR AND BREAK SHARP EDGES 	DO NOT SCALE DRAWING	ISSUE	A
DRAWN		LJSMITH	SIGNATURE	DATE	170215	REVISION
CHK'D						
APPV'D						
MFG						
Q.A						
MATERIAL:		N/A		DWG NO.		AB243000-500A
WEIGHT:				SCALE: 1:20		SHEET 1 OF 1
COPYRIGHT PROPRIETOR		THIS DRAWING IS THE PROPERTY OF CROPLANDS PTY. LTD. REPRODUCTION OF THIS DRAWING (OR PART THEREOF) OR COMMUNICATION OF ITS CONTENTS IS PROHIBITED WITHOUT THE CONSENT OR AUTHORITY OF CROPLANDS PTY. LTD.		TITLE:		WEEDIT SECOND ARM 36M VERSION 2
						A4

1

2

3

4

5

6

1

2