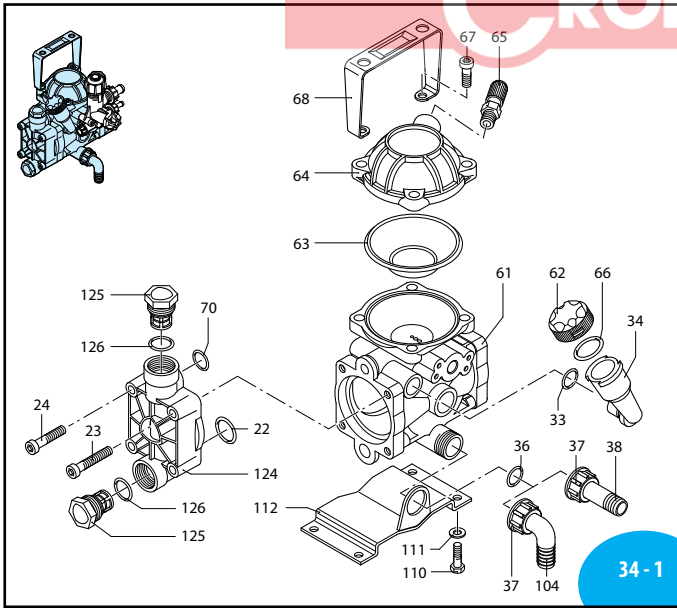


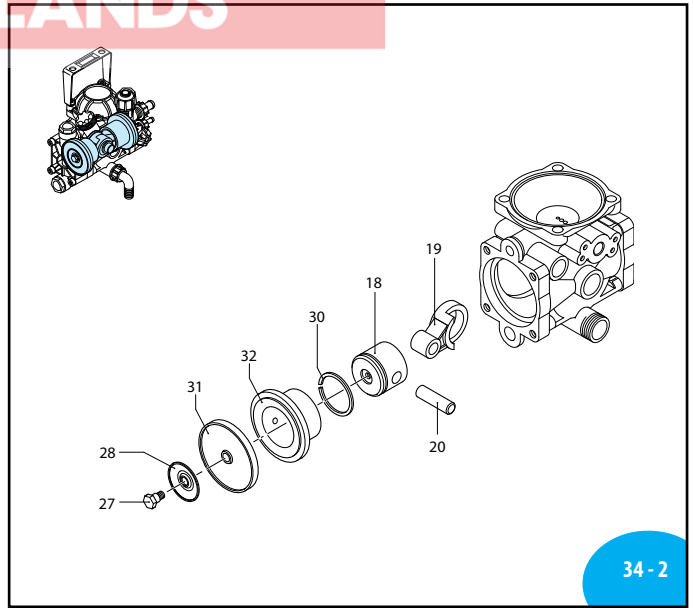


808621



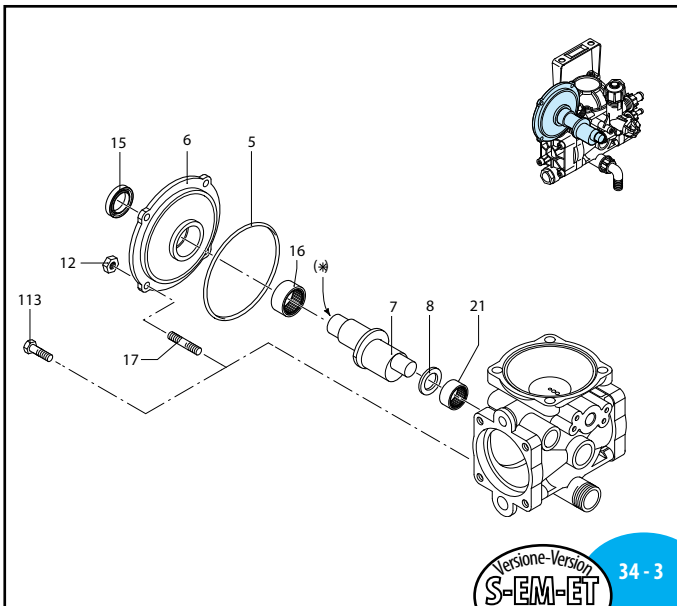
34 - 1

UN990014-LJ



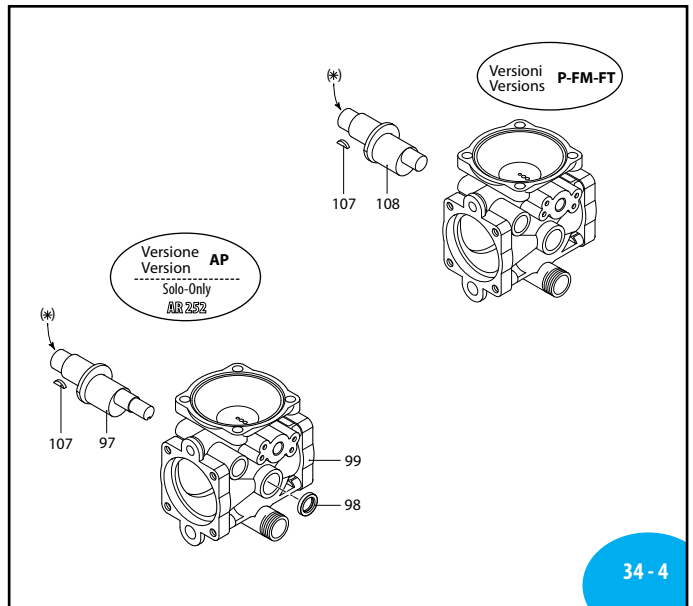
34 - 2

UN000663-CD



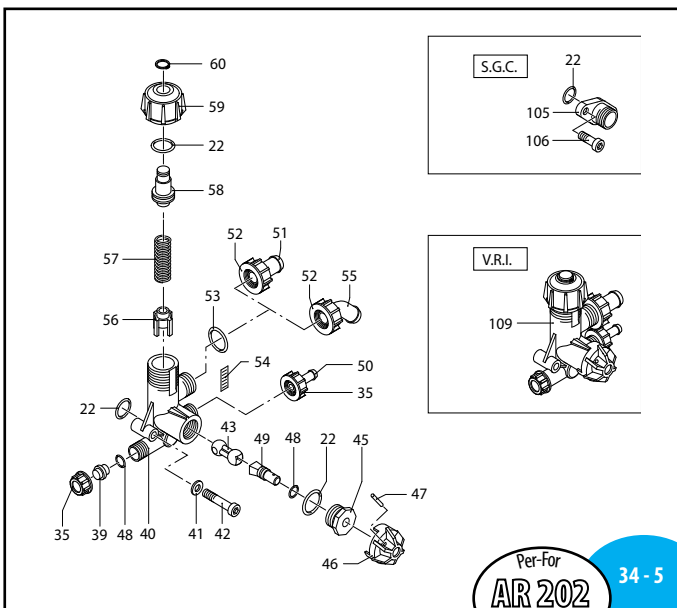
34 - 3

UN990016-LE



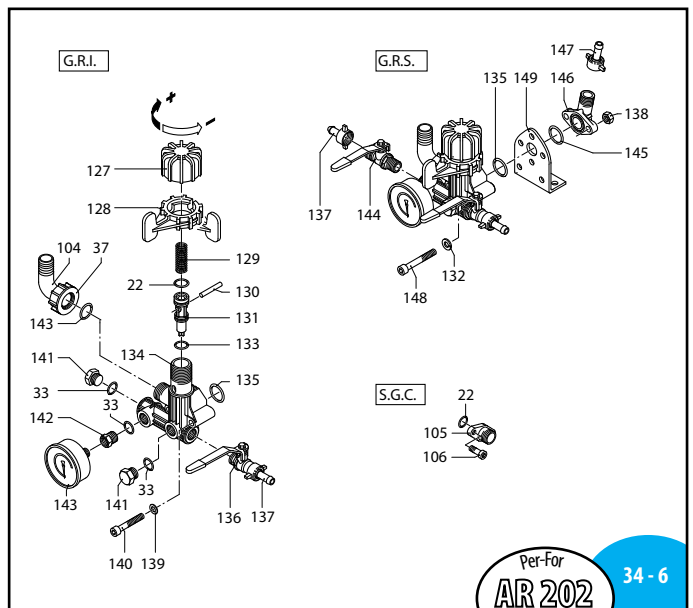
34 - 4

SL000110-FY



Per-For AR 202 34 - 5

SL000138-GX



Per-For AR 202 34 - 6

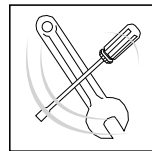
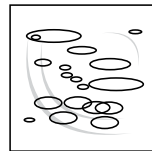
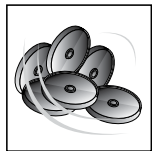
UN990019-LJ

AR 202 - AR 252

Pos.	Cod.	Descrizione	Description	Q.ty	Note
5	800380	OR ø 97x1,6	O-Ring	1	
6	800020	Flangia supp. albero	Flange	1	
7	800174	Albero ecc."S-EM-ET"	"S-EM-ET" shaft	1	AR 202 (G)
	800170	Albero ecc."S-EM-ET"	"S-EM-ET" shaft	1	AR 252 (C)
8	800160	Distanziale	Spacer	1	
12	390440	Dado M 6	Nut	4	
15	800200	Anello tenuta	Seal	1	
16	800180	Boccola a rullini	Roller bushing	1	
17	550330	Prigioniero M 6x34	Stud	4	
18	802070	Pistone	Piston	2	C ₂₀
19	800140	Biella	Connecting rod	2	
20	800130	Spinotto	Piston pin	2	
21	480370	Boccola a rullini	Roller bushing	1	
22	480440	OR ø 17,13x2,62	O-Ring	5	▶
23	680360	Vite TCEI M 8x50	Bolt	1	■ C ₂₀
24	800220	Vite TCEI M 8x45	Bolt	7	C ₂₀
27	800090	Perno membrana	Diaphragm pin	2	○
	800091	Perno membrana	Diaphragm pin	2	Per / For Viton C ₂₀
28	800350	Piattello	Plate	2	
30	802080	Segmento	Piston ring	2	
	800080	Membrana	Diaphragm	2	Gomma
	800081	Membrana	Diaphragm	2	Viton
	800085	Membrana	Diaphragm	2	Desmopan
	800086	Membrana	Diaphragm	2	H.P.D.S.
	802060	Camicia	Sleeve	2	AR 202
	802061	Camicia	Sleeve	2	AR 202 (Viton)
	802050	Camicia	Sleeve	2	AR 252
	802051	Camicia	Sleeve	2	AR 252 (Viton)
33	740290	OR ø 14x1,78	O-Ring	4	▶
34	801960	Serbatoio olio	Oil tank	1	
35	800520	Girello 3/8" G	Ring nut	2	
36	390180	OR ø 18,72x2,62	O-Ring	1	▶
37	550450	Girello 3/4" G	Ring nut	2	
38	800340	Portagomma ø 20	Hose	1	
39	800540	Tappo	Plug	1	
40	800400	Corpo valvola reg.	Valve body	1	
41	550331	Rosetta øi 6,5	Washer	2	
42	800410	Vite TCEI M 6x40	Bolt	2	
43	800430	Valvola	Valve	1	
45	800500	Ghiera	Ring nut	1	
46	800510	Manopola apertura	Knob	1	
47	390330	Spina elast.spir.	Pin	1	
48	800560	OR ø 8,73x1,78	O-Ring	2	
49	800490	Perno ruotismo	Pivot	1	
50	800530	Tubetto ø 8	Hose	1	
51	800670	Tubetto ø 15	Hose	1	
52	800680	Girello M 22x1,5	Ring nut	1	
53	740290	OR ø 14x1,78	O-Ring	1	
54	800480	Adesivo scala atm	Atm scale adhesive	1	
55	1200860	Curva 45° ø 13	45° Elbow	1	
56	800440	Guida inferiore molla	Lower spring guide	1	
57	800450	Molla	Spring	1	
58	800460	Guida superiore molla	Upper spring guide	1	
59	800470	Manopola regolazione	Adjustment knob	1	

Pos.	Cod.	Descrizione	Description	Q.ty	Note
60	480550	Anello seeger	Circlip	1	
61	800010	Corpo pompa "SP"	Pump body "SP"	1	
62	550057	Tappo serbatoio olio	Oil tank cap	1	
63	800190	Semicamera aria inf.	Semi air chamber	1	Gomma
	800191	Semicamera aria inf.	Semi air chamber	1	Viton
64	800230	Semisfera superiore	Upper air chamber	1	Nera / Black
	800232	Semisfera superiore	Upper air chamber	1	Rossa / Red
65	800650	Valvola di gonfiaggio	Valve	1	
66	550040	OR ø 26,65x2,62	O-Ring	1	▶
67	540290	Vite TCEI M 8x25	Bolt	4	C ₂₃
68	800390	Maniglia	Handle	1	
70	800210	OR ø 13,10x2,62	O-Ring	2	▶
97	800173	Albero ecc. passante	Through-shaft	1	AR 252 (F)
98	800960	Anello tenuta	Seal ring	1	
99	800011	Corpo pompa "AP/SP"	Pump body "AP/SP"	1	
104	550460	Curva ø 18	Elbow	2	
105	800692	Flangia mand. 1/2" G	Flange	1	
106	880280	Vite TCEI M 6x18	Bolt	2	
107	800590	Linguetta 4x5	Key	1	
108	800175	Albero ecc. "P-FM-T"	"P-FM-T" shaft	1	AR 202 (H)
	800171	Albero ecc. "P-FM-T"	"P-FM-T" shaft	1	AR 252 (D)
109	1912	Valvola regolazione	Regulating valve	1	
110	180431	Vite TE M 8x16	Bolt	2	C ₂₃
111	380241	Rosetta øi 8,5	Washer	2	
112	800311	Piede puleggia	Pulley base	1	
113	320350	Vite TE M 6x12	Bolt	4	C ₁₀
124	801940	Testa	Head	2	
125	809060	Valvola completa	Valve assembly	4	
126	880830	OR ø 15,54x2,62	O-Ring	4	
127	1880220	Manopola	Adjustment knob	1	
128	1880210	Ghiera sgancio press.	Ring nut	1	
129	1880331	Molla	Spring	1	
130	1880240	Spinotto	Pin	1	
131	1889201	Otturatore	Jet	1	
132	390311	Rosetta 8,5x17x1,5	Washer	2	
133	1880260	OR ø 15,08x2,62	O-Ring	1	
134	1880200	Corpo valvola	Valve body	1	
135	1140450	OR ø 20,24x2,62	O-Ring	1	
136	130491	Rub. 3/8"-1/2" G (M) DX	Right valve	1	ex 30491
137	110131	Racc.1/2" G+tub. ø10	Fitting 1/2" G+hose ø10	2	ex 10131
138	390270	Dado M 8	Nut	2	
139	550331	Rosetta 6,5	Washer	2	
140	801080	Vite TCEI M 6x50	Bolt	2	
141	130171	Tappo 3/8" G	Plug	1	
142	1880250	Riduzione manometro	Pipe reducer	1	
143	1880340	Manometro	Pressure gauge	1	
144	130492	Rub. 3/8"-1/2" G (M) SX	Left valve	1	ex 30492
145	550350	OR ø 23,81x2,62	O-Ring	1	
146	450145	Flangia raccordo	Flange	1	
147	110130	Racc.1/2" G+tub. ø13	Fitting 1/2" G+hose ø13	1	ex 10130
148	1880310	Vite TCEI M 8x65	Bolt	2	
149	320406	Staffa GS	Bracket	1	
150	880830	OR ø 15,54x2,62	O-Ring	1	▶

Media Pressione
Medium Pressure



KIT 1927 Membrane gomma Buna diaphragms	
Pos.	Q.ty
31	2

KIT 2408 Valvole Valves	
Pos.	Q.ty
125	4
126	4

KIT 2409 OR O-Rings			
Pos.	Q.ty	Pos.	Q.ty
5	1	135	1
22	5	145	1
33	4		
36	1		
48	2		
53	1		
66	1		
70	2		
126	4		
133	1		

KIT 2410 Pronto intervento Maintenance repair			
Pos.	Q.ty	Pos.	Q.ty
5	1	62	1
22	5	63	1
27	1	70	2
28	1	125	4
31	2	126	4
33	1		
34	1		
36	1		
48	2		
53	1		

KIT 1910
Pronto intervento VRI
VRI Maintenance repair

KIT 2411
Pronto intervento GR 30
GR 30 Maintenance repair

Pos.	Q.ty
5	1
22	5
33	4
36	1
48	2
53	1
70	2
126	4
133	1
135	1
145	1

Olio utilizzato Used oil	
Tipo - Type	Kg
SAE 30	0,34

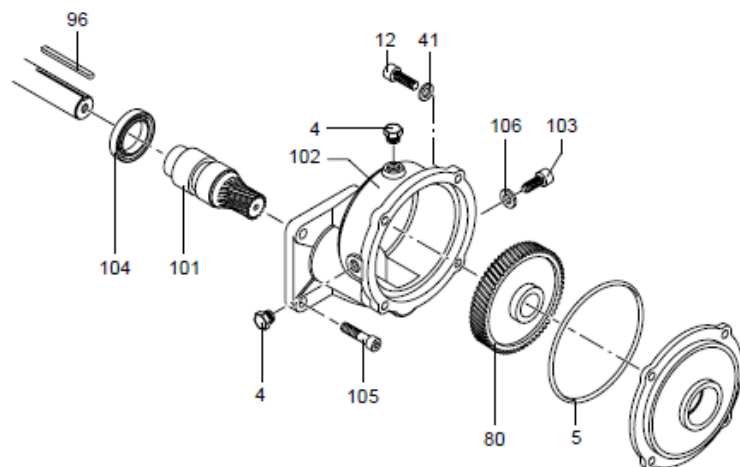
NOTE
SOME PARTS ARE NON-STOCK
ITEMS AND MAY NEED TO BE
ORDERED

NOTE
PLEASE ADD PREFIX AR
TO REFLECT CROPLANDS
PART NUMBER

COD. 1613 (Ø 3/4") - COD. 1615 (Ø 5/8") - COD. 1618 (Ø 18) RID. 1:4,3



Per / For: AR 202 - AR 252



UN970035-LJ

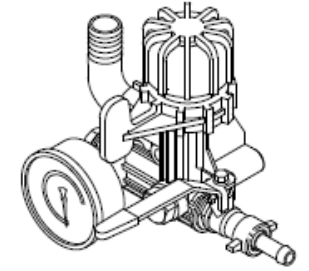
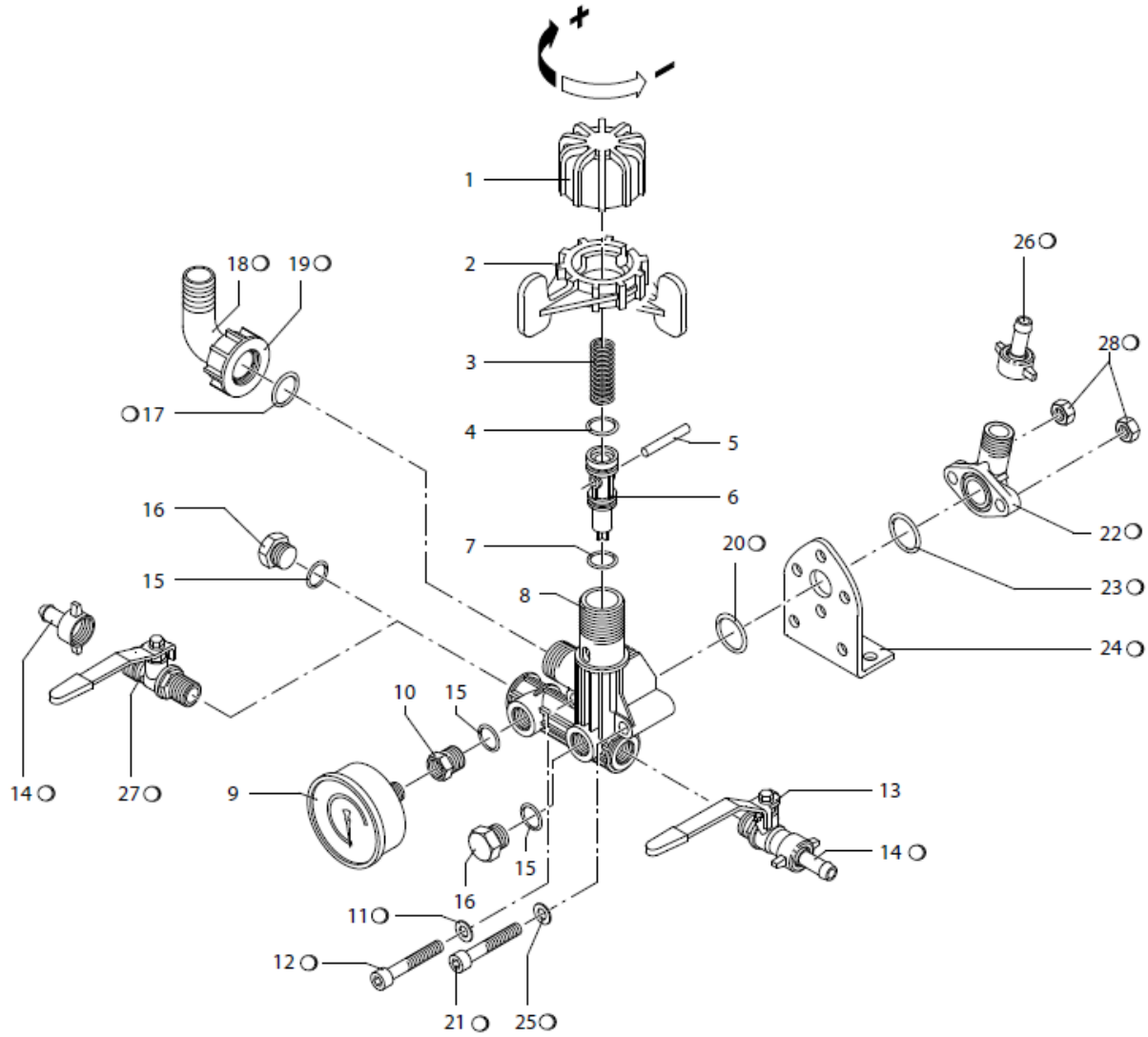
97 - 1

Pos.	Cod.	Descrizione	Description	Q.ty	Note
4	620301	Tappo 1/8" G conico	Plug	2	
5	800380	OR Ø 97x1,6	O-Ring	1	
12	850850	Vite TCEI M 6x30	Bolt	4	
41	550331	Rosetta Ø 6,5	Washer	4	
80	800280	Ingranaggio	Gear	1	Z=57
96	881090	Linguetta	Key	1	
101	800810	Pignone Z=13	Pinion	1	Ø19,05mm(3/4")
	801230	Pignone Z=13	Pinion	1	Ø15,8 mm(5/8")
	801770	Pignone Z=13	Pinion	1	Ø18 mm
102	800820	Scatola riduttore	Gear box	1	Per/For 1613
	800821	Scatola riduttore	Gear box	1	Per/For 1615-1618
103	800800	Vite TCEI M 8x16	Bolt	1	
104	480820	Anello tenuta	Seal	1	
105	620440	Vite TCEI 5/16"24 UNFx7/8"	Bolt	4	
106	820520	Rosetta Ø 8,3	Washer	1	

PER MOTORI A SCOPIO CON P.D.E ALBERO CILINDRICO Ø 5/8", FLANGIA SAE J609A:
 FOR PETROL ENGINE WITH 5/8" P.T.O. SHAFT, FLANGE SAE J609A:
 POUR MOTEUR À ESPLOSION AVEC P.D.E ARBRE CILINDRIQUE Ø 5/8", FLASQUE SAE J609A:
 FÜR EXPLOSIONMOTOREN MIT T.Z.W. ZYLINDRISCHE WELLE Ø 5/8", FLANSH SAE J609A:
 PARA MOTORES À ESPLOSIÓN CON T.D.F. EJE CILINDRICO Ø 5/8", ACOPLAMIENTO SAE J609A:

BRIGGS & STRATTON HONDA KAWASAKI

1888640



Pos.	Cod.	Descrizione	Description	Q.ty	Note
1	1880220	Manopola	Adjustment knob	1	
2	1880210	Ghiera sgancio press.	Ring nut	1	
3	1880331	Molla	Spring	1	☒
4	480441	OR ø 17,13x2,62	O-Ring	1	Viton ◀▶
5	1880240	Spinotto	Pin	1	☒
6	1889201	Otturatore	Jet	1	
7	1880260	OR ø 15,08x2,62	O-Ring	1	
8	1880200	Corpo valvola	Valve body	1	
9	1880340	Manometro	Pressure gauge	1	■ C 10
10	1880250	Riduzione manometro	Pipe reducer	1	● C 10
11	550331	Rosetta øi 6,5	Washer	2	
12	801080	Vite TCEI M 6x50	Bolt	2	C 10
13	1880491	Rub. 3/8"-1/2" (M) DX	Right valve	1	Leva rossa ⊗ C 10
14	110131	Racc.1/2"G+tub. ø10	Fitting 1/2" G+hose ø10	3	
15	740290	OR ø 14x1,78	O-Ring	3	
16	2841240	Tappo	Plug	2	C 10
17	880830	OR ø 15,54x2,62	O-Ring	1	
18	550460	Curva ø18	Elbow	1	
19	550450	Girello 3/4"G	Ring nut	1	
20	1140450	OR ø 20,24x2,62	O-Ring	1	
21	1880310	Vite TCEI M 8x65	Bolt	2	
22	450145	Flangia raccordo	Flange	1	
23	550350	OR 23,81x2,62	O-Ring	1	
24	320406	Staffa GS	Bracket	1	
25	390311	Rosetta 8,5x17x1,5	Washer	2	
26	110130	Racc.1/2"G+tub. ø13	Fitting 1/2" G+hose ø13	1	
27	1880492	Rub. 3/8"-1/2" G (M) SX	Left valve	1	Leva rossa ⊗ C 10
28	390270	Dado M8	Nut	2	

○ Non compreso nel GR 30 - No part of GR 30

(2062)

(CI 0446 MG 14.01.11)

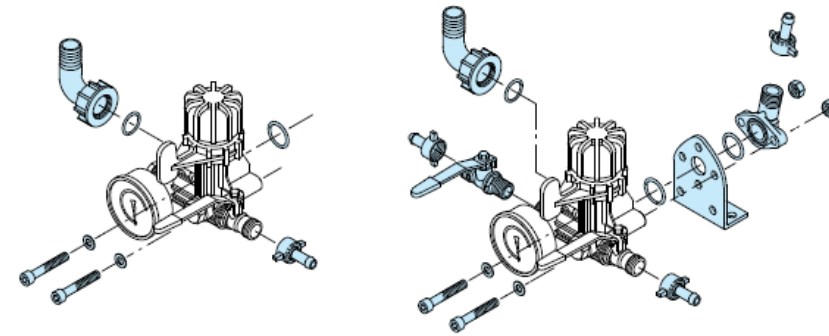
(3023)

0435MG

Kit per/for GR 30

KIT 891 "I"

KIT 892 "S"



UN000481-GE

UN000482-GE

Comando incorporato e separato - Build-in control unit and remote control

KIT 891 "I"

Comando incorporato
Build in control

Pos.	Q.ty	Pos.	Q.ty
11	2		
12	2		
14	1		
17	1		
18	1		
19	1		
20	1		

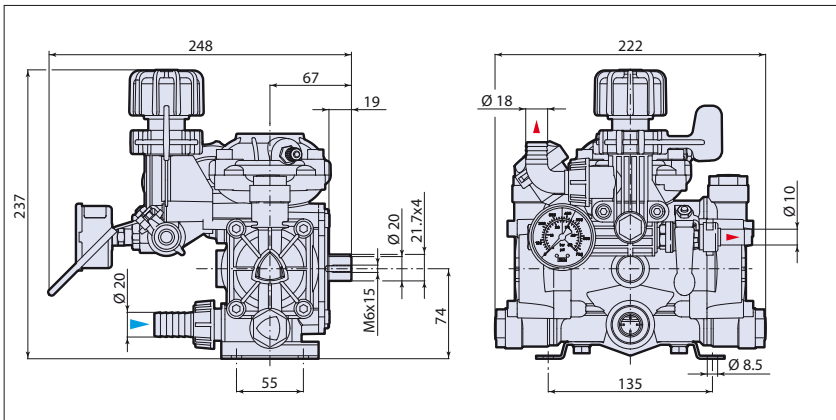
Per / for AR 252

KIT 892 "S"

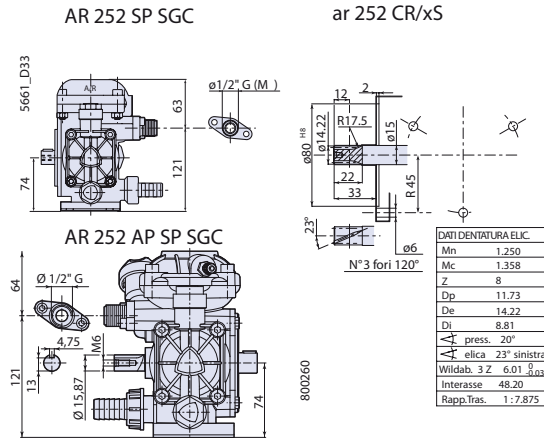
Comando separato
Remote control

Pos.	Q.ty	Pos.	Q.ty
14	3	26	1
17	1	27	1
18	1	28	2
19	1		
20	1		
21	2		
22	1		
23	1		
24	1		
25	2		

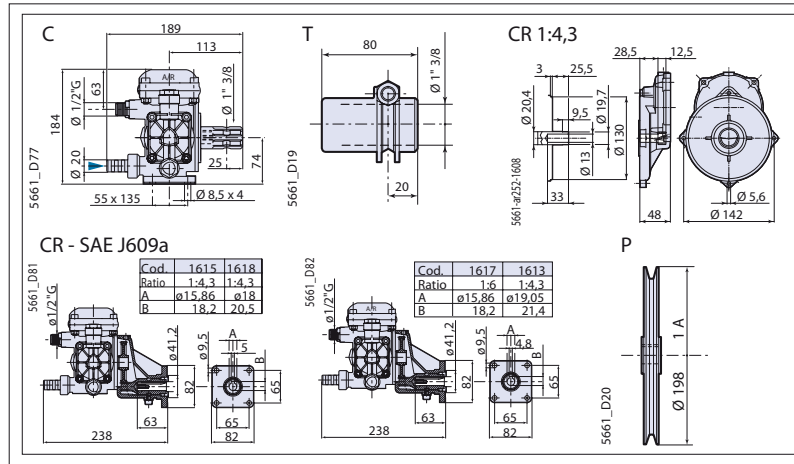
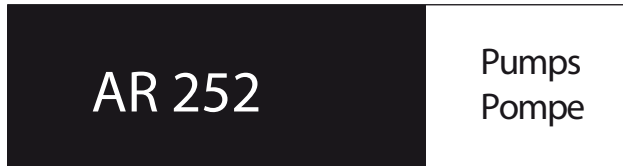
Per / for AR 252



AR 252 VRI



DIMENSIONS • DIMENSIONI



Please note: specifications are subject to change for improvement without notice.
© Apr 2007 by AnnoviReverberi spa

HONDA GX120



Engine Type	Air-cooled 4-stroke OHV
Bore x Stroke	60 X 42 mm
Displacement	118 cm³
Net Power Output*	3.5 HP (2.6 kW) @ 3,600 rpm
Net Torque	5.4 lb-ft (7.3 Nm) @ 2,500 rpm
PTO Shaft Rotation	Counterclockwise (from PTO shaft side)
Compression Ratio	8.5:1
Lamp/Charge coil options	25W, 50W
Carburetor	Butterfly
Ignition System	Transistorized magneto
Starting System	Recoil
Lubrication System	Splash
Governor System	Mechanical
Air cleaner	Dual Element
Oil Capacity	0.59 US qt. (0.56 L)
Fuel Tank Capacity	2.1 U.S. qts (2.0 liters)
Fuel	Unleaded 86 octane or higher
Dry Weight	29 lbs. (13.0 kg)
Dimensions	
Length (min)	11.7" (297 mm)
Width (min)	13.6" (346 mm)
Height (min)	13.0" (329 mm)