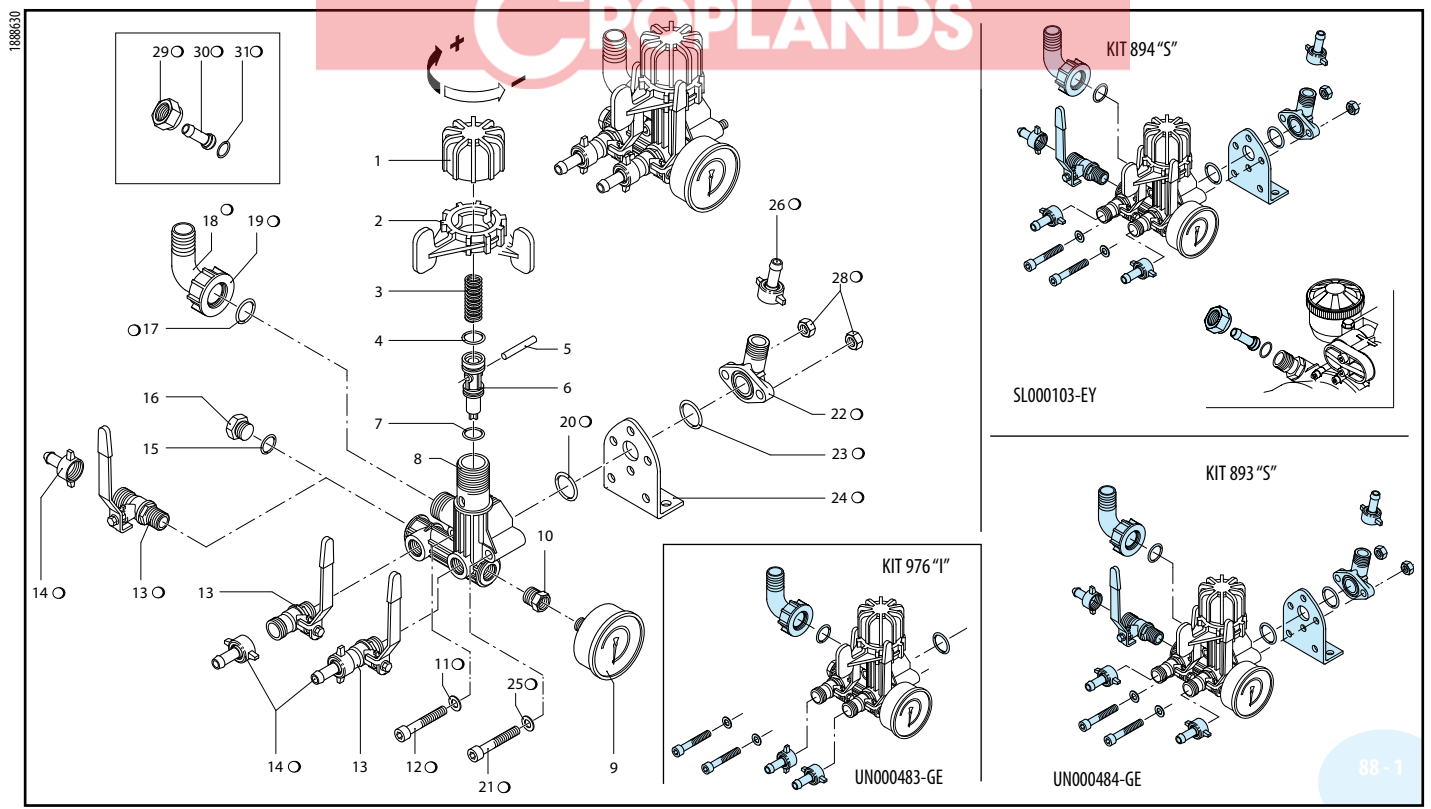


ANNOVIREVERBERI

GR 40



SL000303-BU

Pos.	Cod.	Descrizione	Description	Q.ty	Note
1	1880220	Manopola	Adjustment knob	1	
2	1880210	Ghiera sgancio press.	Ring nut	1	
3	1880271	Molla	Spring	1	☒
4	480441	OR ø 17,13x2,62	O-Ring	1	Viton ☒
5	1880240	Spinotto	Pin	1	☒
6	1889201	Otturatore	Jet	1	
7	1880260	OR ø 15,08x2,62	O-Ring	1	
8	1880200	Corpo valvola	Valve body	1	
9	1880290	Manometro	Pressure gauge	1	☐ C ₁₀
10	1880250	Riduzione manometro	Pipe reducer	1	C ₁₀
11	390311	Rosetta 8,5x17x1,5	Washer	2	
12	680360	Vite TCEI M 8x50	Bolt	2	C ₁₀
13	1880491	Rub. 3/8"-1/2" (M) DX	Right valve	3	Leva rossa ☐ C ₁₀
14	110131	Racc.1/2"G+tub. ø10	Fitting 1/2"G+hose ø10	3	ex 10131
15	740290	OR ø 14x1,78	O-Ring	2	
16	2841240	Tappo	Plug	1	C ₁₀
17	880830	OR ø 15,54x2,62	O-Ring	1	
18	550460	Curva ø18	Elbow	1	
19	550450	Girello 3/4"G	Ring nut	1	
20	1140450	OR ø 20,24x2,62	O-Ring	1	
21	1880310	Vite TCEI M 8x65	Bolt	2	
22	450145	Flangia raccordo	Flange	1	
23	550350	OR ø 23,81x2,62	O-Ring	1	
24	320406	Staffa GS	Bracket	1	
25	390311	Rosetta 8,5x17x1,5	Washer	2	
26	110130	Racc.1/2"G+tub. ø13	Fitting 1/2"G+hose ø13	1	
28	390270	Dado M8	Nut	2	
29	1040790	Giunto 3/4" G	Joint	1	
30	1150580	Portagomma ø13	Hose tail	1	
31	880830	OR ø 15,54x2,62	O-Ring	1	

nel GR 40 - No part of GR 40

(2023) 0435MG

Comando incorporato e separato - Build-in control unit and remote control

KIT 976 "I" Comando incorporato Build in control			
Pos.	Q.ty	Pos.	Q.ty
11	2		
12	2		
14	2		
17	1		
18	1		
19	1		
20	1		

Per / for AR 303 - AR 403

KIT 893 "S" Comando separato Remote control			
Pos.	Q.ty	Pos.	Q.ty
13	1	25	2
14	3	26	1
17	1	28	2
18	1		
19	1		
20	1		
21	2		
22	1		
23	1		
24	1		

Per / for AR 303 - AR 403

KIT 894 "S" Comando separato Remote control			
Pos.	Q.ty	Pos.	Q.ty
13	1	25	2
14	3	26	1
17	1	28	2
18	1	29	1
19	1	30	1
20	1	31	1
21	2		
22	1		
23	1		
24	1		

Per / for AR 503

NOTE

SOME PARTS ARE NON-STOCK ITEMS AND MAY NEED TO BE ORDERED

NOTE

PLEASE ADD PREFIX AR TO REFLECT CROPLANDS PART NUMBER