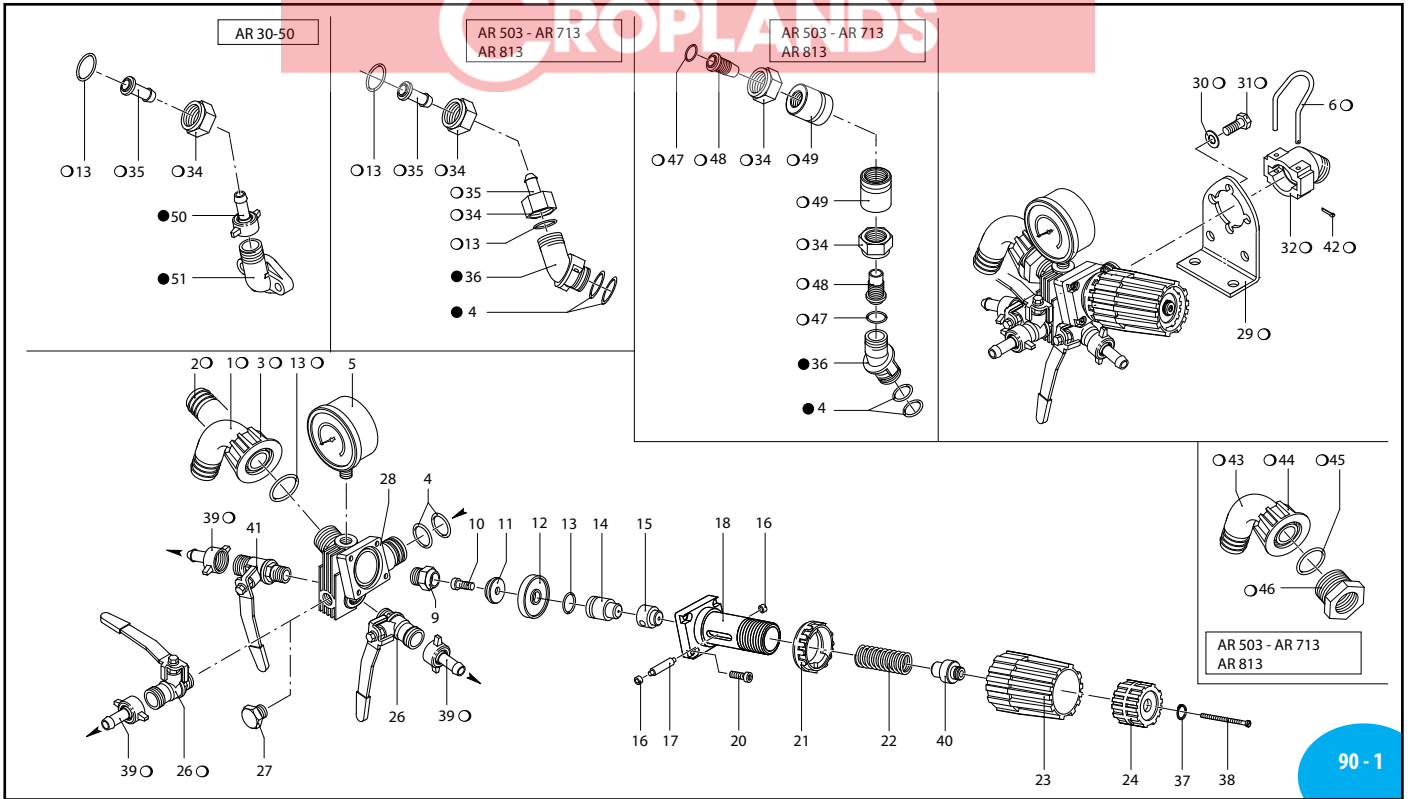
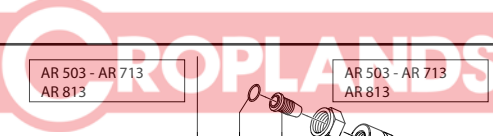


# ANNOVIREVERBERI

## RM 40



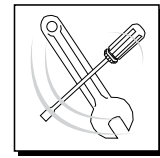
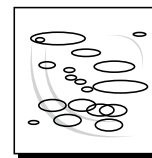
90 - 1

UN000493-GF

Pos.	Cod.	Descrizione	Description	Q.ty	Note
1	550460	Curva ø 18	Elbow	1	
2	800340	Portagomma ø 20	Hose tail	1	Optional
3	800342	Portagomma ø 16	Hose tail	1	Optional
4	550450	Girello 3/4" G	Ring nut	1	
5	390180	OR ø 18,72x2,62	O-Ring	4	►
6	550545	Manometro ø 63	Pressure gauge	1	0-80 bar ●
9	1150520	Sede valvola	Valve seat	1	■
10	680560	Vite TCEI M 6x16	Bolt	1	● C <sub>10</sub>
11	1040640	Valvola inox	Valve	1	
12	1040630	Membranina	Diaphragm	1	Desmopan
13	1040631	Membranina	Diaphragm	1	Gomma
14	880830	OR ø 15,54x2,62	O-Ring	4	►
15	1040621	Pistone	Piston	1	
16	1150560	Distanziale molla	Spring spacer	1	
17	1150600	Rullino	Roller	2	
18	1150540	Perno	Pin	1	
20	1150510	Corpo superiore	Upper body	1	☒
21	780330	Vite TCEI M 6x20	Bolt	4	C <sub>10</sub>
22	1150530	Frontale	Plate	1	☒
23	394760	Molla	Spring	1	☒
24	1150550	Manopola rossa	Adjustment knob	1	
26	1150570	Ghiera carica molla	Ring nut	1	
27	130491	Rub. 3/8"-1/2" G (M) DX	Right valve	2	ex 30491 ●
28	130171	Tappo 3/8" G	Plug	1	ex 30171 ■
29	1150500	Corpo valvola	Valve body	1	
30	1150590	Staffa	Bracket	1	
31	390311	Rosetta øi 8,5	Washer	2	
32	180431	Vite TE M 8x16	Bolt	2	C <sub>20</sub>
33	1040770	Attacco 3/4" G (M)	Coupling	1	
34	1040790	Girello raccordo 3/4" G	Nut	2	
35	1150580	Portagomma ø 13	Hose tail	2	
36	1040760	Attacco 3/4" G	Coupling	1	
37	480550	Anello seeger	Circlip	1	
38	1150650	Vite TCTC M 3x60	Screw	1	● C <sub>5</sub>
39	110131	Racc. 1/2" G+tub. ø10	Fitting 1/2" G+hose ø10	3	ex 10131
40	1150660	Distanziale molla	Spring spacer	1	
41	130492	Rub. 3/8"-1/2" G (M) SX	Left valve	1	ex 30492 ●

Pos.	Cod.	Descrizione	Description	Q.ty	Note
42	1040950	Copiglia	Split pin	1	
43	550370	Curva ø 25	Elbow	1	
44	550242	Girello 1" G	Ring nut	1	
45	550350	OR ø 23,81x2,62	O-Ring	1	
46	800720	Niples 3/4" G(F)-1" G(M)	Threaded adapter	1	●
47	960160	OR ø 17,86x2,62	O-Ring	2	►
48	1040810	Portagomma ø 13x24	Hose tail	2	
49	1040800	Ghiera raccordo	Ring nut	2	
50	110130	Racc. 1/2" G+tub. ø13	Fitting 1/2" G+hose ø13	1	
51	450145	Flangia raccordo	Flange	1	

○ Non compreso nel RM 40 - No part of RM 40  
● Compreso nella pompa - Part of pump



KIT 1988 OR O-Rings			
Pos.	Q.ty	Pos.	Q.ty
4	2		
13	4		

KIT 1989 Pronto intervento Maintenance repair			
Pos.	Q.ty	Pos.	Q.ty
4	2	23	1
6	1	24	1
9	1	37	1
11	1	38	1
12	1	40	1
13	4	42	1
15	1		
17	1		
21	1		
22	1		

**NOTE**

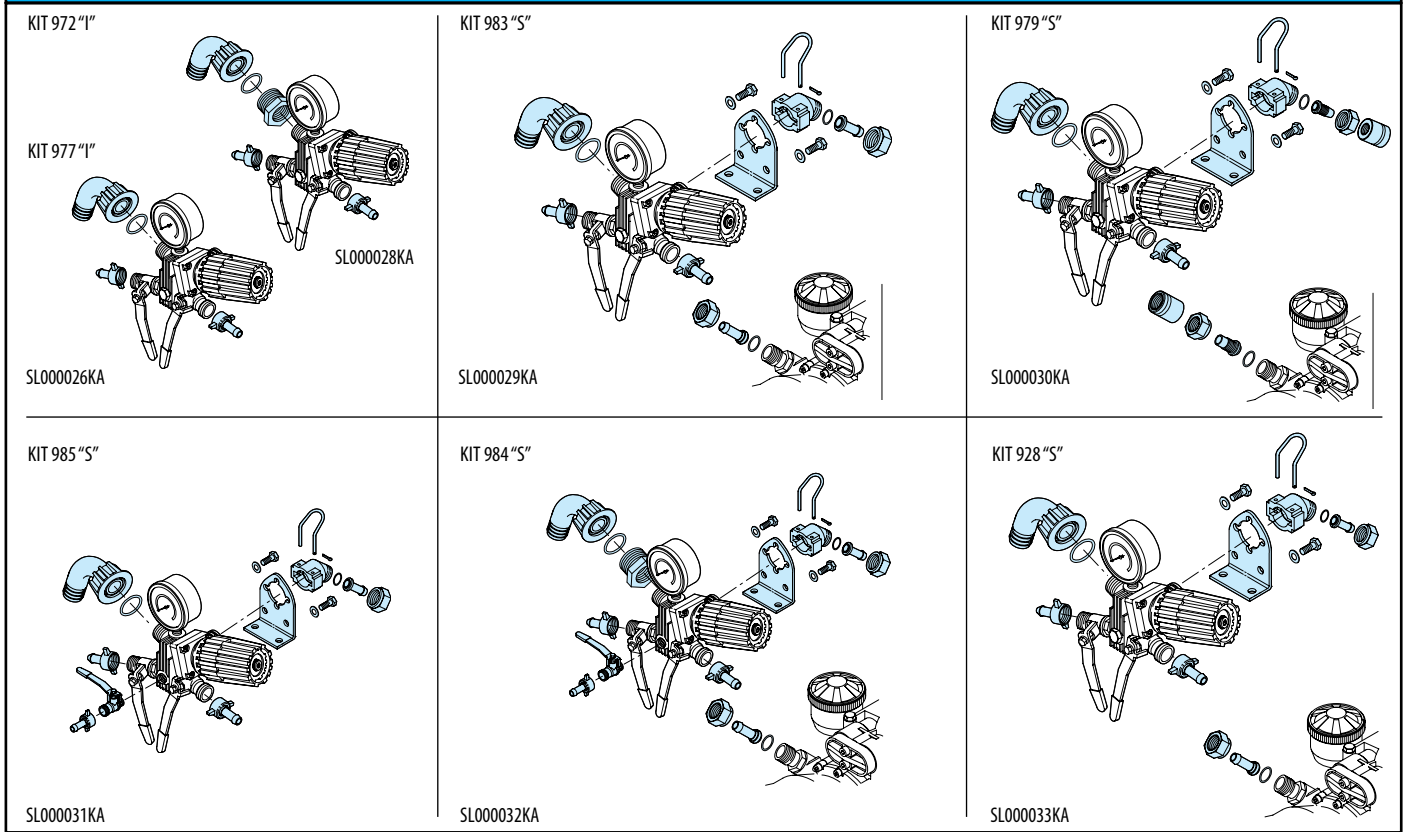
SOME PARTS ARE NON-STOCK ITEMS AND MAY NEED TO BE ORDERED

**RM 40**

Kit per/for RM 40

**NOTE**

PLEASE ADD PREFIX **AR** TO REFLECT CROPLANDS PART NUMBER



Comando incorporato e separato - Build-in control unit and remote control

KIT 972 "I" Comando incorporato Build in control		KIT 977 "I" Comando incorporato Build in control	
Pos.	Q.ty	Pos.	Q.ty
39	3	1	1
43	1	3	1
44	1	13	4
45	1	39	3
46	1		
Per / for AR 713 AR 813		Per / for AR 503	

KIT 983 "S" Comando separato Remote control			
Pos.	Q.ty	Pos.	Q.ty
1	1	39	3
3	1	42	1
6	1	47	
13	4	2	
29	1		
30	2		
31	2		
32	1		
34	2		
35	2		
Per / for AR 503			

KIT 979 "S" Comando separato Remote control			
Pos.	Q.ty	Pos.	Q.ty
1	1	42	1
3	1	47	2
6	1	48	2
13	4	49	2
29	1		
30	2		
31	2		
32	1		
34	2		
39	3		
Per / for AR 503 - AR 713 - AR 813			

KIT 985 "S" Comando separato Remote control			
Pos.	Q.ty	Pos.	Q.ty
1	1	35	2
3	1	39	3
6	1	42	1
13	4	47	2
26	2		
29	1		
30	2		
31	2		
32	1		
34	2		
Per / for AR 30 - AR 50			

KIT 984 "S" Comando separato Remote control			
Pos.	Q.ty	Pos.	Q.ty
6	1	43	1
26	2	44	1
29	1	45	1
30	2	46	1
31	2	47	2
32	1		
34	2		
35	2		
39	3		
42	1		
Per / for AR 503 - AR 713 - AR 813			

KIT 928 "S" Comando separato Remote control			
Pos.	Q.ty	Pos.	Q.ty
1	1	39	3
3	1	42	1
6	1	47	2
13	4		
29	1		
30	2		
31	2		
32	1		
34	2		
35	2		
Per / for AR 503			

Gruppi comando  
Control units