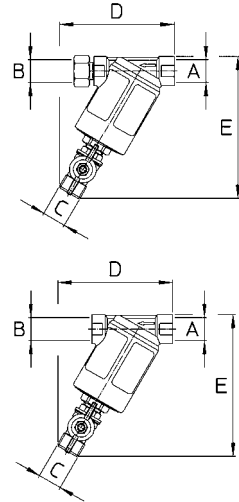
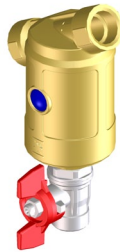
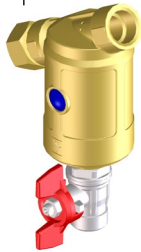




CROPLANDS

M146 - M147

Ghiera girevole G1/2F.
1/2" BSPF. Swivel nut



146.504.10
146.504.10 30
146.504.10 70

147.504.11
147.504.11 30
147.504.11 70

147.504.11 01

Standard completi di cartuccia filtrante

Versioni: **M146** completo di rubinetto a sfera e ghiera girevole G1/2F.
M147 completo di rubinetto a sfera e filettature G1/2F.
147.504.11 01 completo di tappo G1/2M. e filettature G1/2F.

Pressione di esercizio max.: 50 bar

Peso: M146 - 655 g
M147 - 585 g

Materiali: ottone - acciaio inox.

Impiego: su gruppi irroranti e atomizzatori. Filtri in linea di mandata con rubinetto di spurgo. Le dimensioni ridotte permettono il montaggio diretto all'entrata delle barre dell'atomizzatore.

Standard with screen

Models: **M146** with ball valve and 1/2" BSPF. swivel nut
M147 with ball valve and 1/2" BSPF. threads
147.504.11 01 with 1/2" BSPM. plug and 1/2" BSPF. threads

Max operating pressure: 50 bar / 700 psi

Weight: M146 - 655 g / 23 oz
M147 - 585 g / 20.5 oz

Materials: brass - stainless steel

Use: line strainer for air blast sprayers. Tap allows an easy wash down. Compact. Dimensions makes it suitable to direct assembly on manifolds.

COME SI ORDINA / HOW TO ORDER

CODICE code	VERSIONE model	MESH	PORTATA l/min flowrate USGal/min	A	B	C	D mm	E mm	
146.504.10	M146	40	70 - 185	G1/2F.	G1/2F.	G1/2M.	105	130	10
146.504.10 30	M146	30	90 - 24	G1/2F.	G1/2F.	G1/2M.			10
146.504.10 70	M146	70	50 - 13	G1/2F.	G1/2F.	G1/2M.			10
147.504.11	M147	40	170 - 185	G1/2F.	G1/2F.	G1/2M.	105	130	10
147.504.11 30	M147	30	90 - 24	G1/2F.	G1/2F.	G1/2M.			10
147.504.11 70	M147	70	50 - 13	G1/2F.	G1/2F.	G1/2M.			10
147.504.11 01	M147	40	70 - 185	G1/2F.	G1/2F.	-	87	85	10

NOTE

PLEASE ADD PREFIX **B** TO PART NUMBER TO REFLECT CROPLANDS PART NUMBER



COME SI ORDINA / HOW TO ORDER

CODICE code	DIMENSIONI mm sizes mm	MESH	MATERIALI materials	
146.203.16	Ø40x63	40	INOX - stainless steel	10
146.203.17	Ø40x63	30	INOX - stainless steel	10
146.203.19	Ø40x63	70	INOX - stainless steel	10
146.203.22	Ø40x63	100	INOX - stainless steel	10