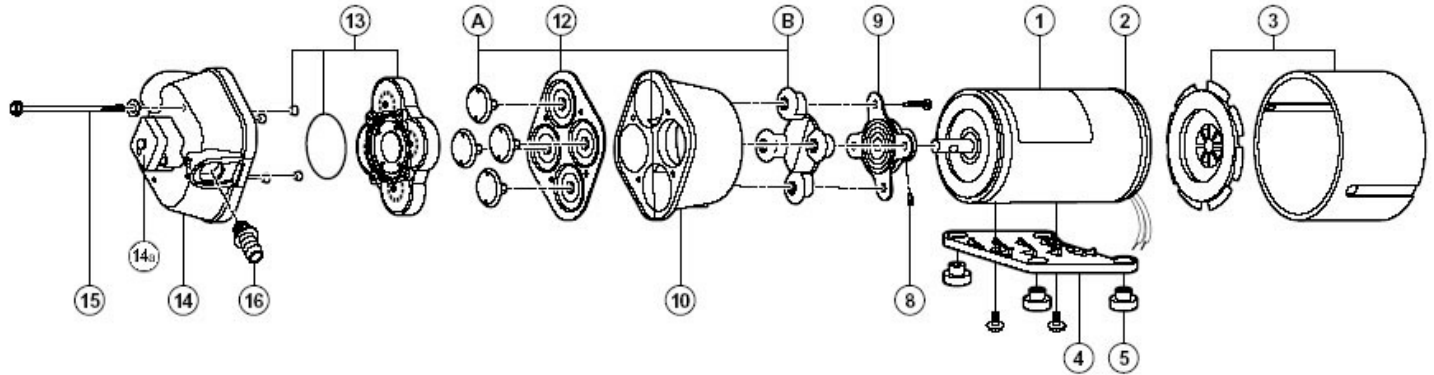


4300 Series

7.6 lpm to 18.9 lpm, pressure up to 2.8 bar (40 psi), fan cooled Quad pumps with pressure switch, 1/2" & 3/4" hose connections and 1/2" straight thread connection. Regulator recommended for boom spraying.

PARTS LIST MODEL 4300 SERIES



FL4300-142

Spare Part Description	Position	Part Number
Pressure Switch	14a	FL02095-103
Diaphragms	12	FL20403-040
Check Valves	13	FL20407-030
Upper Housing Assembly	14	FL20406-000

FL4300-143

Spare Part Description	Position	Part Number
Pressure Switch	14a	FL02095-103
Diaphragms	12	FL20403-040
Check Valves	13	FL20407-030
Upper Housing Assembly	14	FL20406-000

FL4300-242

Spare Part Description	Position	Part Number
Pressure Switch	14a	FL02095-103
Diaphragms	12	FL20403-040
Check Valves	13	FL20407-030
Upper Housing Assembly	14	FL20406-000