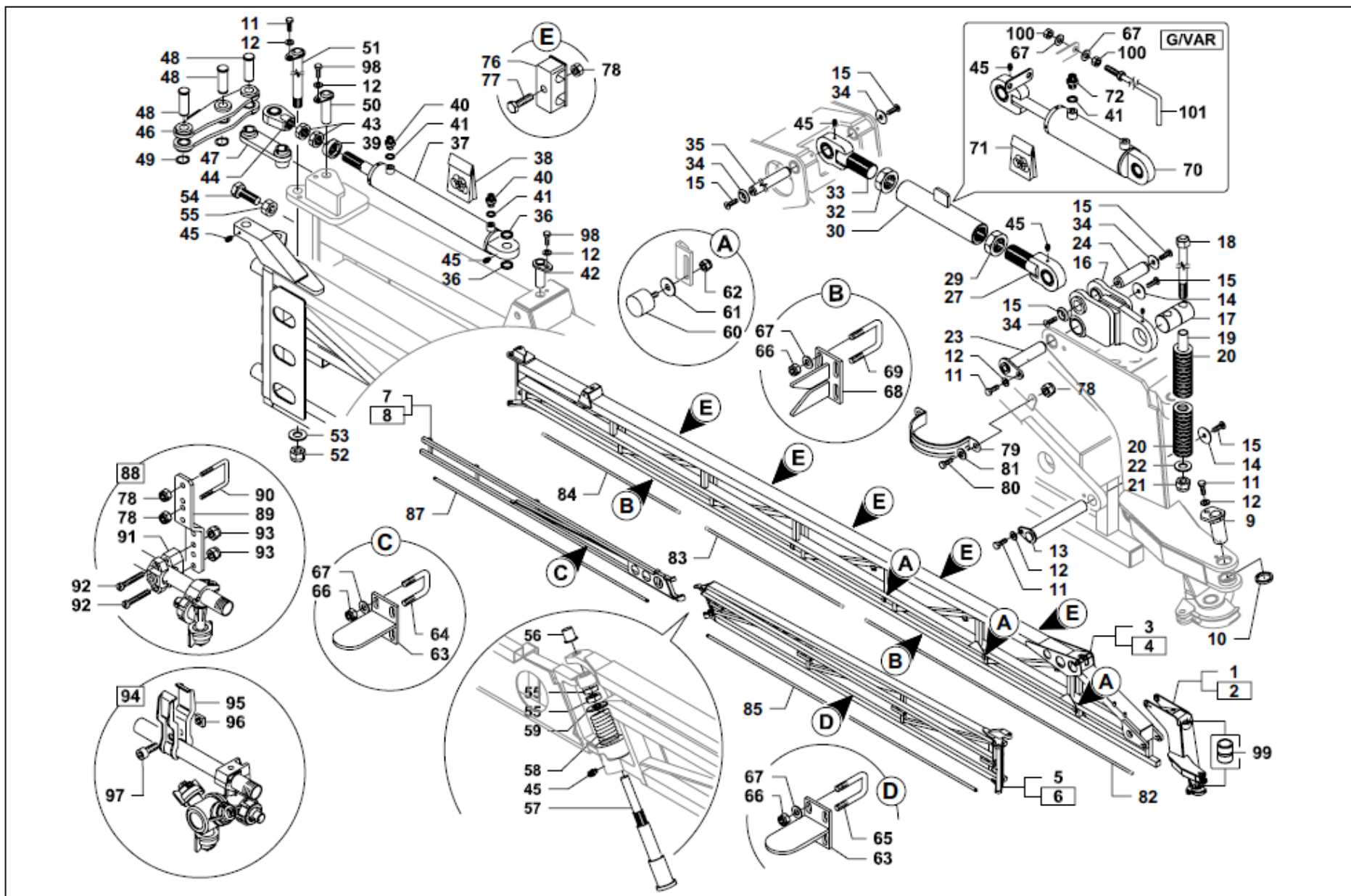


CROPLANDS PART NUMBERS: GBCOMPL305-LHA – Boom Arm 28m LH Gvar Ver 2



| Pos | Part No | Description | Qty |
|-----|---------------|----------------------------|-----|
| 1 | GBBG026414 | INNER PIVOT R/H V2 | 1 |
| 2 | GBBG026415 | INNER PIVOT L/H V2 | 1 |
| 3 | GBBG025150 | INNER BOOM ARM R/H V2 | 1 |
| 4 | GBBG025151 | INNER BOOM ARM L/H V2 | 1 |
| 5 | GB023000050V | OUTER BOOM ARM R/H | 1 |
| 6 | GB023000051V | OUTER BOOM ARM L/H | 1 |
| 7 | GB022800080V | BREAKAWAY ARM R/H | 1 |
| 8 | GB022800081V | BREAKAWAY ARM L/H | 1 |
| 9 | GB392000330V | PIN | 2 |
| 10 | GB392000335Z | SPACER | 2 |
| 11 | GB900110025Z | M10 x 20mm BOLT (ZINC) 8.8 | 10 |
| 12 | GB907200010Z | 10mm SPRING WASHER | 12 |
| 13 | GB500100144VR | BOTTOM PIN | 2 |
| 14 | GB500400008Z | COUNTERSUNK WASHER | 4 |
| 15 | GB900710025Z | COUNTERSUNK SCREW | 12 |
| 16 | GBBG006429 | PIN HOUSING | 2 |
| 17 | GB500100145Z | STRAINER PIN | 2 |
| 18 | GB023200209Z | STRAINING BOLT | 2 |
| 19 | GB500200037Z | SLEEVE | 2 |
| 20 | GB919900043V | SPRING | 4 |
| 21 | GB905400020 | M30 NYLOC NUT (ZINC) | 2 |
| 22 | GB907120046Z | M30 WASHER (ZINC) | 2 |
| 23 | GB500100058V | PIN | 2 |
| 24 | GB500100044 | PIN | 2 |
| 27 | GBBG017659 | L/H BALL JOINT | 2 |
| 29 | GBBG017662 | M30 NUT L/H THREAD | 2 |
| 30 | GBBG017657 | DUAL THREADED TURNBUCKLE | 2 |
| 32 | GBBG017660 | M30 NUT R/H THREAD | 2 |
| 33 | GBBG017658 | R/H BALL JOINT | 2 |
| 34 | GB500400004Z | COUNTERSUNK WASHER | 8 |
| 35 | GBBG006427 | PIN | 2 |
| 36 | GB500200029Z | SPACER | 4 |
| 37 | GBBG024772 | HYDRAULIC RAM | 2 |
| 38 | GBBG024776 | SEAL KIT | 2 |
| 39 | GB003273 | M27 SPACER LOCK NUT | 2 |
| 40 | GB570500010Z | 1/4" NIPPLE 1.0 ORIFICE | 4 |
| 41 | GB600500001 | COPPER WASHER | 6* |
| 42 | GB500100055V | PIN | 2 |
| 43 | GB905220027Z | M27 PLAIN NUT (ZINC) | 4 |
| 44 | GB920100043Z | BALL JOINT M27 | 2 |
| 45 | GB919800020 | GREASE NIPPLE | 14* |
| 46 | GB006461 | LINK ARM | 4 |
| 47 | GB023200216V | LINK PIVOT | 2 |
| 48 | GB006426 | PIN | 6 |
| 49 | GB000187 | CIRCLIP | 6 |
| 50 | GB500100110V | PIN | 2 |
| 51 | GB500100146V | PIN | 2 |
| 52 | GB905400024 | M24 NYLOC NUT (ZINC) | 2 |
| 53 | GB907025044Z | M24 WASHER (ZINC) | 2 |

| Pos | Part No | Description | Qty |
|-------|--------------|-----------------------------|-----|
| 54 | GB900124050Z | M24 BOLT | 2 |
| 55 | GB905200024Z | M24 PLAIN NUT (ZINC) | 6 |
| 56 | GB500200049 | CAP WASHER | 2 |
| 57 | GB500100111Z | BREAKAWAY PIN | 2 |
| 58 | GB919900023Z | BREAKAWAY SPRING | 2 |
| 59 | GB500400019Z | M24 WASHER (LARGE) | 2 |
| 60 | GB950200004 | RUBBER STOPPER 20mm | 4 |
| 60 | GB950200001 | RUBBER STOPPER 30mm | 2 |
| 61 | GB90710824Z | M8 X 24mm WASHER | 6 |
| 62 | GB905400008 | M8 NYLOC NUT (ZINC) | 6 |
| 63 | GB022400053V | WING SUPPORT MALE | 2 |
| 64 | XBMBB32 | 32mm U BOLT | 4 |
| 65 | XBMBB | 40mm U BOLT | 4 |
| 66 | GB905400010 | M10 NYLOC NUT (ZINC) | 16 |
| 67 | GB907010021Z | M10 WASHER (ZINC) | 18* |
| 68 | GB022400054V | WING SUPPORT FEMALE | 2 |
| 69 | XBMBB50 | 50mm U BOLT | 8 |
| 70 | GBBG006474 | GVAR RAM | 2 |
| 70 | MP-610/30-2 | LOCK VALVE KIT FOR GVAR RAM | 2 |
| 71 | GB996000418 | SEAL KIT | 2 |
| 72 | GB570500011Z | 1/4" NIPPLE 1.5 ORIFICE | 2 |
| 76 | GB950200058 | HOSE RETAINER | 10 |
| 77 | GB900306035Z | M6 x 35mm BOLT (ZINC) | 10 |
| 78 | GB905300006 | M6 NYLOC NUT (ZINC) | 66 |
| 79 | GB950200059 | CABLE RETAINER | 2 |
| 80 | GB900106016Z | M6 x 35mm BOLT (ZINC) | 4 |
| 81 | GB907106018Z | M6 NYLOC NUT (ZINC) | 4 |
| 82/83 | GB550400050 | 4 HOLE SPRAY RAIL | 4 |
| 84/85 | GB550700050 | 7 HOLE SPRAY RAIL | 4 |
| 87 | GB550600050 | 6 HOLE SPRAY RAIL | 2 |
| 88 | GB999900100 | SPRAY RAIL SUPPORT KIT | 26 |
| 89 | GB201800418V | SPRAY RAIL BRACKET | 26 |
| 90 | GB500500004Z | M6 U BOLT | 26 |
| 91 | A425130 | 2 PIECE RAIL CLAMP | 26 |
| 92 | GB904506040X | M6 x 40mm SCREW STAINLESS | 52 |
| 93 | GB905400006X | M6 NYLOC NUT STAINLESS | 52 |
| 98 | GB900110020Z | BOLT | 2 |
| 99 | GBBG000067 | BUSHING | 2 |
| 100 | GB905100010Z | M10 PLAIN NUT (ZINC) | 4 |
| 101 | GB27160045V | LEVELLER SIGHT GAUGE | 2 |

* Quantities may vary between Gvar and Standard Booms

NOTE

Parts in italics are non-stock items and may need to be ordered.