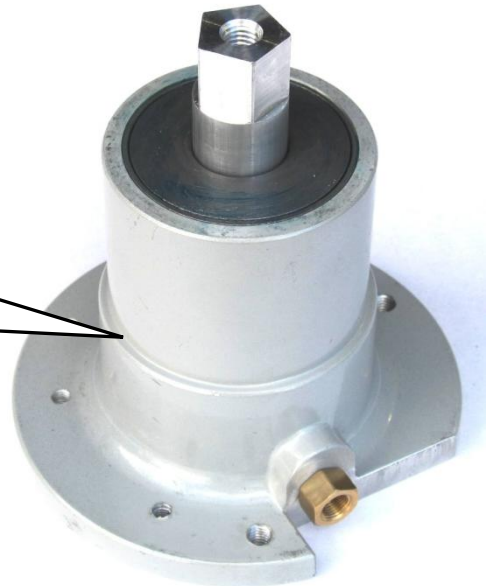


## Quantum Mist, QM-380 Spray Head, Parts & Assembly: (2007 - current)

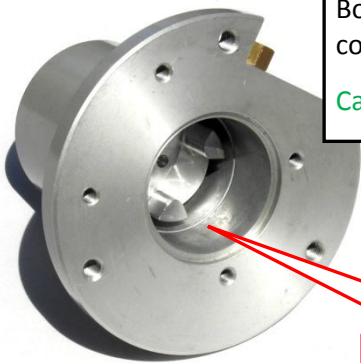
The below applies to all QM-380 spray heads since inception. See page 5 for Cable Drive.

### Drive Body, HP-119-9B

The fully assembled drive body is now a stand alone, “non serviceable part”. The price of the complete drive body has been reduced – making it cheaper to exchange new for old than it is to repair.



HP-119-9B is the latest version Drive Body. It features a 10mm longer shaft compared to HP-119-9A.  
Cable Drive is HP-119-9C

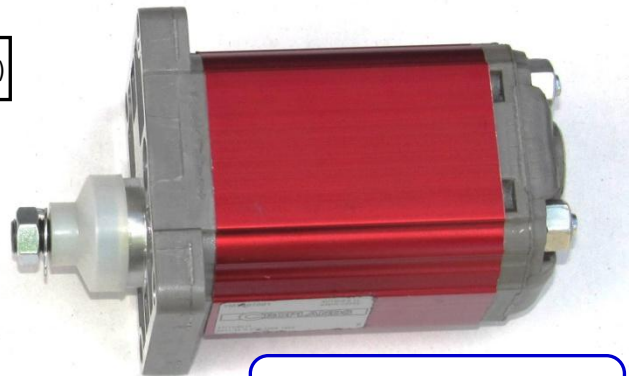


Note 3 prong rear of shaft

NOTE : In some cases the motor supplied will be painted in a protective black epoxy coating.



HP-219-1A1 (Motor Coupling)



Bolt motor to housing using M6 x 25 SS bolts + washers



HP-219-1C ((Rubber) Spider Coupling)



HP-219-4A (Locating Ring)

HP-219M6.5CE

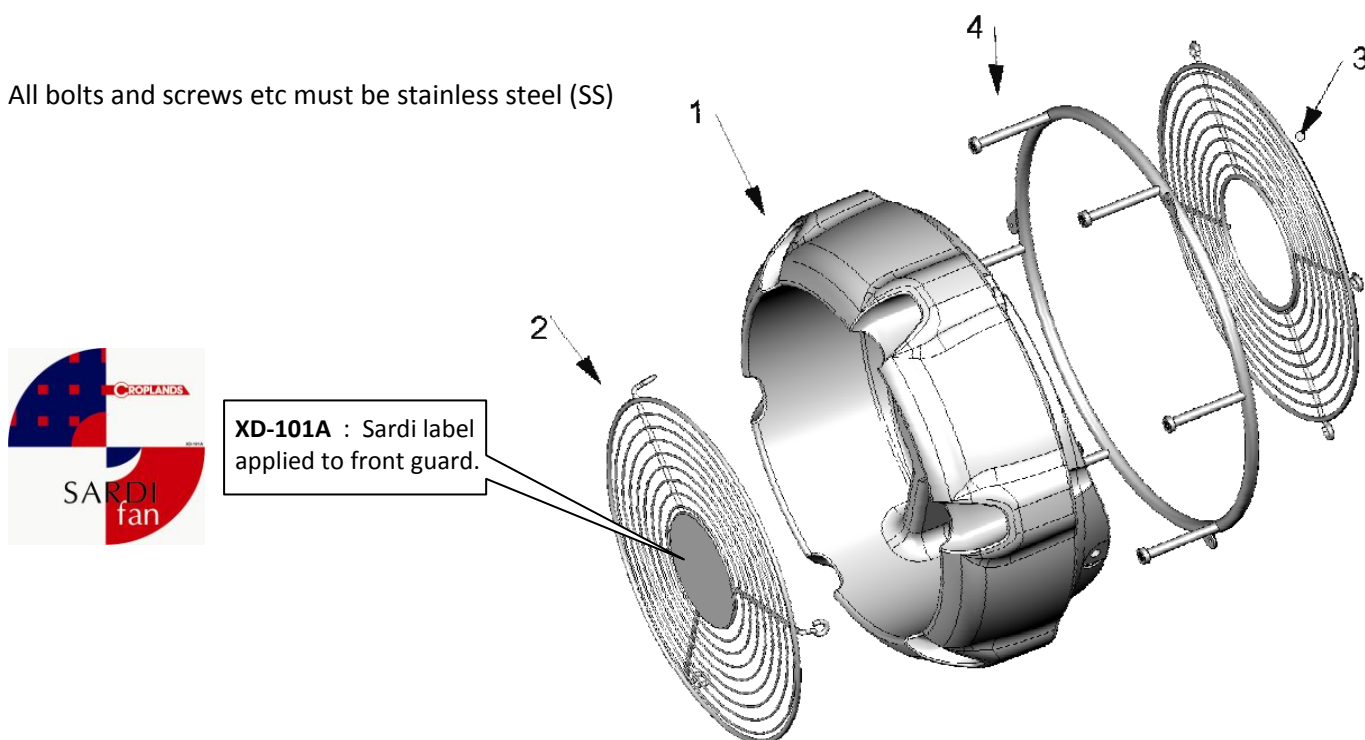
### Hydraulic Motor, HP-219M6.5CE The bare hydraulic (rear port) motor (without coupling components).

## Cowling Assembly

Four major components make up the cowling assembly.

dwg	Part Number	Part Name	Comments
1	HP-119-3A	Fan Cowling	One piece, red colour
2	HP-119-6A	Front Guard	Powder coated, stainless steel, black colour
3	HP-119-7A	Rear Guard	Powder coated, stainless steel, black colour
4	HP-119-5A	Spray Ring (stainless steel)	Screws to back of the cowling

All bolts and screws etc must be stainless steel (SS)



XD-101A : Sardi label applied to front guard.

**1**

- Insert Drive Body from rear of cowling.
- Note alignment of position for the rpm sensor to the cowling cutaway.



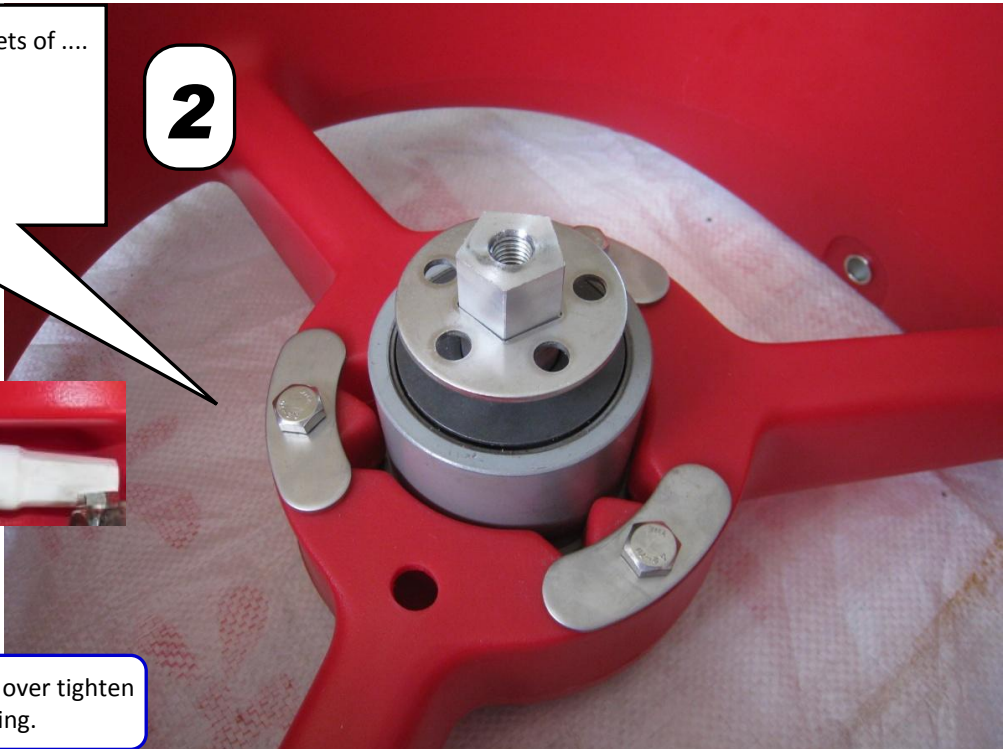
Attach drive body to cowling via 3 sets of ....

- **M8 x 80 SS bolts**
- **HP-219- 18, Kidney Washers**
- Must use Loctite 569 or similar

**2**



Be careful to not over tighten & crush the cowling.

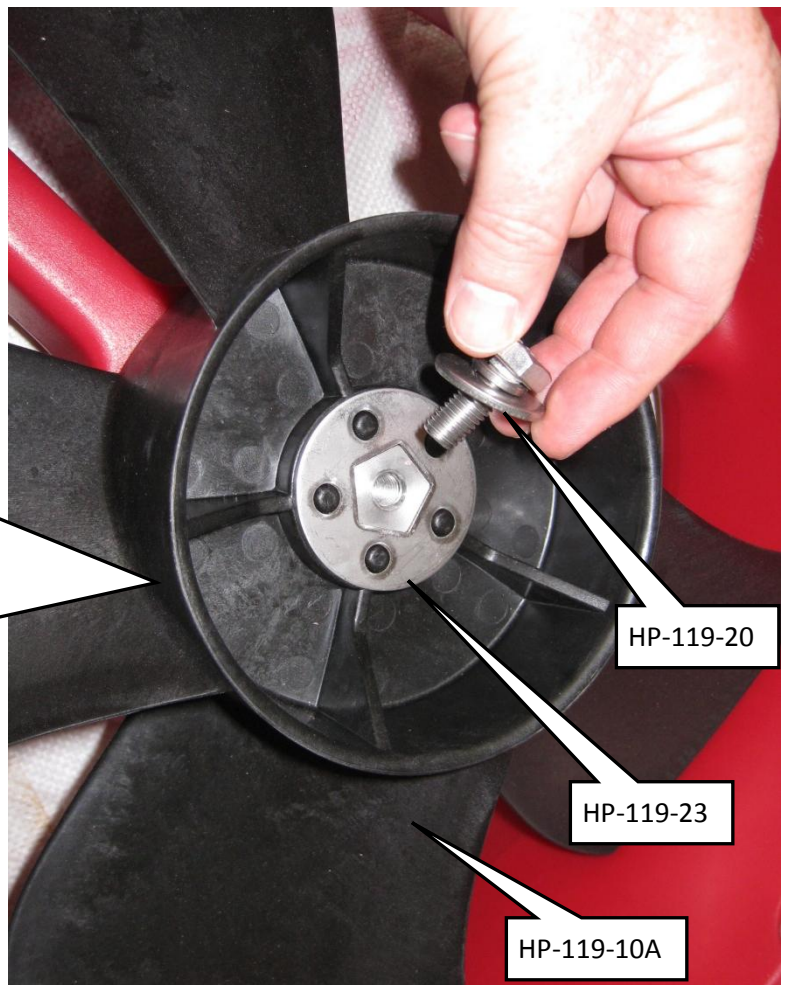


**3**

Install the Fan, the order is ..

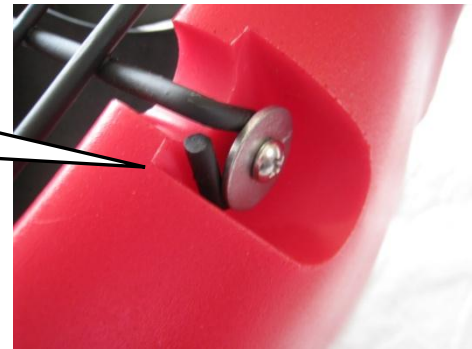
- 1 @ **HP-119-23 HEP Washer** to drive shaft
- Slide on **HP-119- 10A Fan**, note correct way around.
- Add second **HP-119-23 HEP Washer**
  - Make sure shaft is not protruding past the HEP washer.
- Secure fan with **M10 x 25 SS bolt**, plus **HP-119-20 SS Washer** and a spring washer.
- Must use Loctite 569 or similar

NOTE : As of mid 2012 the **HP-119-10A** fan has been improved to be **stronger & more durable** (with no change in part number).



**4**

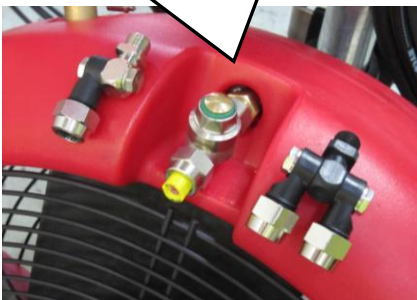
- **Install Front Guard, (HP-119-6A).** Use (8G) M4.2 x 19 SS screws & M5 x 20 SS washers.
- Because of the longer shaft (in new drive body HP-119-9B), the fan sits very close to the front guard. The **guard must be pulled away from the fan** at the same time as tightening the screws.



**5**

- **Install Spray Ring, (HP-119-5A)** to cowling via 3 @ (8G) M4.2 x 19 SS screws
- If only using single swivels, its best to install swivels first.

- **To install Swivels, (HP-219-22A)** / B264.612.172. **Must use thread sealant**, Loctite 569 or equivalent.
- Other options shown (on QM500) are shut off nozzle (B67.617.67) or double (HP-219-23 / B264.612.171)



**6**

- **Install Bracket, (HP-119-8)**
- To do so requires (each side) a M12 x 50 SS bolt plus 2 @ **HP-119-21 D-Washer**, a spring washer & nylock nut.
- Apply a touch of Molykote to the bolt's thread to prevent seizure.



**7**

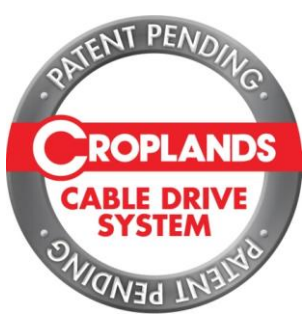
- **Install Rear Guard (HP-119-7A).** Use (8G) M4.2 x 19 SS screws & M5 x 20 SS washers.



Since late 2010, the QM-380 has featured an extended shaft (by 10mm) – to improve efficiency & reduce noise.

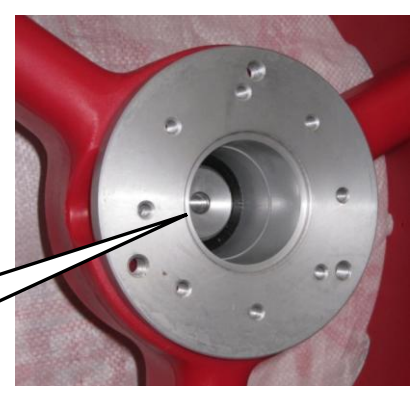
A **retrofit kit** (comprising of a special spacer set) is available (for those with original shafts), part **HP-119-13**.

## Cable Drive QM-380 Heads



The Cable Drive head is similar to the hydraulic version, with the following changes .....

- Cable Drive, **Drive Body HP-119-9C** is easily identified because it does not have the rpm sensor cut-out (compare with picture on page 1). The shaft is also different. It is not adaptable to the (hydraulic) HP-119-9B or visa versa.



Cable Drive shaft uses an M10 left hand thread

- No hydraulic motor or its coupler etc.
- Each head will require a Cable Connector, to attached cable to the drive body.... which is a separate item. See Cable Drive Part & Operator’s manual (HT-POMCD2012A) for this information.

## Complete QM-380 Head Assemblies

Part Number	Part Name	Comments
HP-119-31	QM 500, Complete head (Hydraulic)	Includes hydraulic motor and swivels (no nozzles)
HP-119-32	QM 500, Complete head (Cable Drive)	Includes swivels (no nozzles) and of course no hydraulic motor.