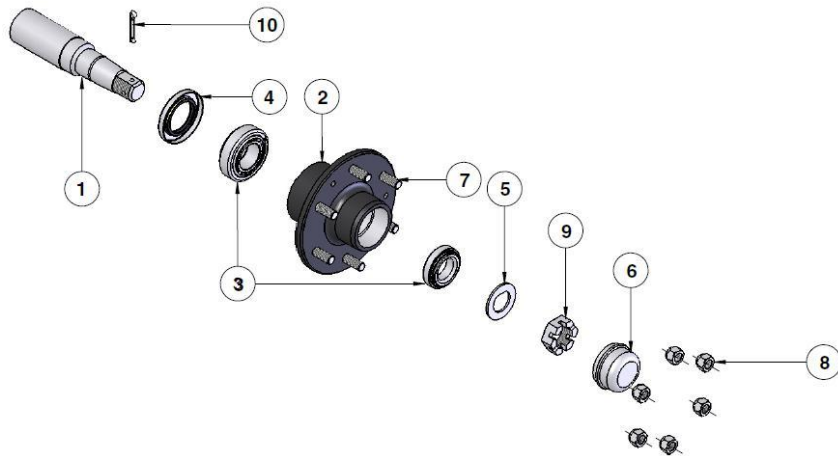


Item	Part No.	Description	Qty
1	HP-199B	STUB AXLE 6STUD 50MM SQUARE (FAD)	2
2	HP-309	AXLE HOUSING 1500L (not shown)	1
2A	HP-409	AXLE HOUSING 2000L (not shown)	1
3	HP-408L	AXLE ADJUSTABLE LEFTHAND	1
4	HP-408R	AXLE ADJUSTABLE RIGHTHAND	1
5	HP-198F	STUB AXLE / PLATE ASSEMBLY	2
6	MT10013	SPEED SENSOR MOUNTING BRACKET (not shown)	1
7	HP-201	PLATE	2

Note: Drawing is for illustration purpose only
Refer to parts list.



STUB AXLE HP-199B

Item	Part No.	Description
1	<i>HP-199B-1</i>	STUB 50SQ x M310 LONG
2	<i>HP-199B-2</i>	HUB 6/205PCD
3	HP-199BEARING	BEARING KIT 30209/30206
4	<i>HP-199B-4</i>	SEAL M53x85x8
4a	<i>HP-199B-4a</i>	SEAL RING M45.5x53x13
5	<i>N/A</i>	
6	HP-199CAP	DUST CAP 62MM
7	HP-199STUD	STUD M18.5x55
8	HP-199F-8	NUT M18.5
9	HP-199CNUT	CASTLE NUT M24x1.5
10	<i>HP-199B-10</i>	SPLIT PIN M4x40

Note: Parts in italics are non-stock items and may need to be ordered