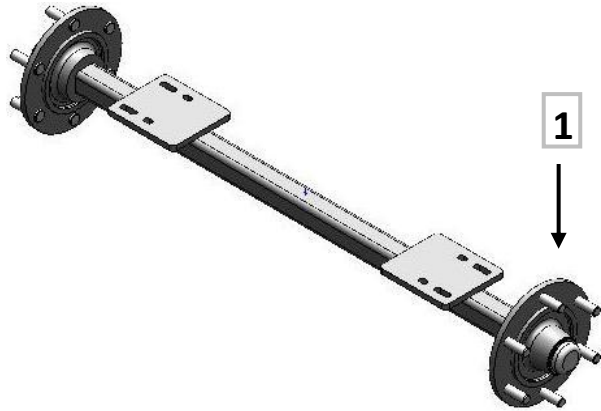
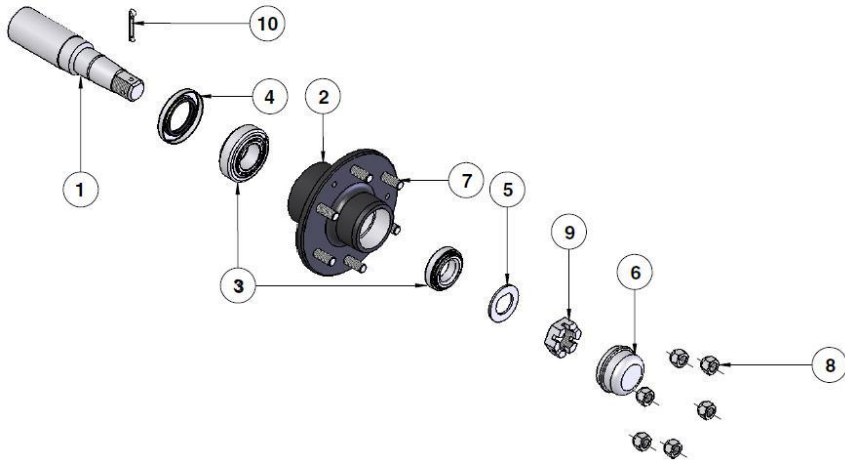


**CROPLANDS PART NUMBERS: BP-205A 4000L SOLID AXLE**



Item	Part No.	Description	Qty
1	<b>HP-199E</b>	AXLE/HUB 6/205 75SQ ANDYS	2
	<b>MT10013</b>	SPEED SENSOR MOUNTING BRACKET <i>(not shown)</i>	1

*Note: Drawing is for illustration purpose only  
Refer to parts list.*

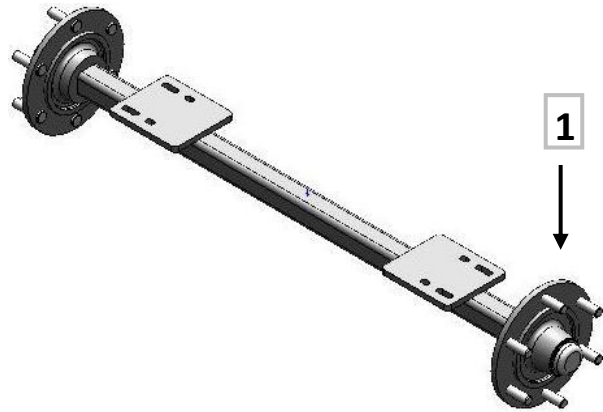


Item	Croplands P/N	Description
1	<b>HP-199E-1</b>	STUB 75SQx395LG
2	<b>HP-199E-2</b>	WHEELHUB 6/205 PCD
3	<b>HP-199E-3</b>	BEARING KIT 32213/32210
4	<b>HP-199E-4</b>	TRIPLE LIP SEAL 125x90x12mm
4	<b>HP-199E-4A</b>	SEAL RING 70.5x90x16.5mm <i>(not shown)</i>
4	<b>HP-199E-4B</b>	WEAR RING <i>(to suit T.L.S not shown)</i>
5	<b>N/A</b>	N/A
6	<b>HP-199E-6</b>	DUST CAP <i>(3 screws items 11 and 12)</i>
7	<b>HP-199F-7</b>	WHEEL STUD M18x1.5x65
8	<b>HP-199F-8</b>	WHEEL NUT M18x1.5
9	<b>HP-199E-9</b>	SLOTTED/CASTLE NUT M39x2
10	<b>HP-199E-10</b>	SPLIT PIN 60 x 6mm
11	<b>HP-199E-11</b>	SOCKET HEAD CAP SCREW M8x30 <i>(not shown)</i>
12	<b>HP-199E-12</b>	M8 RIB LOCK WASHERS <i>(not shown)</i>

**STUB AXLE HP-199E**

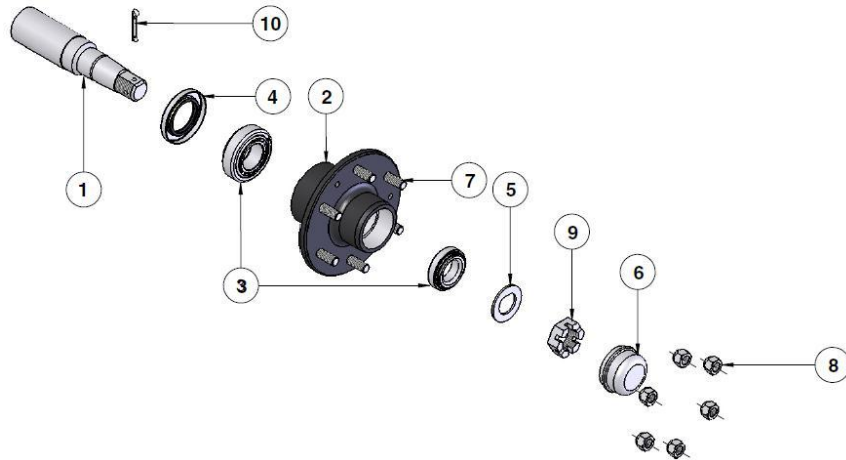
*Note: Parts in italics are non-stock items and may need to be ordered*

**CROPLANDS PART NUMBERS: BP-205A 4000L SOLID AXLE (PRE 2011 FAD)**



Item	Part No.	Description	Qty
1	<b>HP-199A</b>	AXLE/HUB 6/205 70SQ (FAD)	2
	<b>MT10013</b>	SPEED SENSOR MOUNTING BRACKET <i>(not shown)</i>	1

*Note: Drawing is for illustration purpose only  
Refer to parts list.*

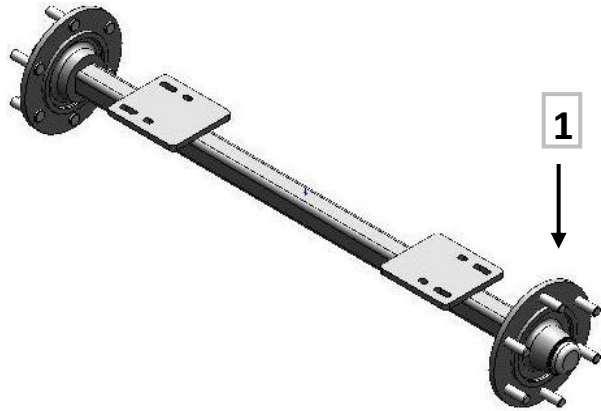


**STUB AXLE HP-199A**

Item	Croplands P/N	Description
1	<i>HP-199A-1</i>	STUB 70SQx300LG
2	<i>HP-199A-2</i>	WHEELHUB 6/205 PCD
3	<b>HP-199ABEARING</b>	BEARING KIT 30213/30210
4	<b>HP-199ASEAL</b>	SEAL 120x80x12mm
4	<i>HP-199A-4A</i>	SEAL RING 67x80x12mm <i>(not shown)</i>
5	<b>N/A</b>	N/A
6	<b>HP-199ACAP</b>	DUST CAP 90mm
7	<i>HP-199A-7</i>	WHEEL STUD M18x1.5x49
8	<b>HP-199F-8</b>	WHEEL NUT M18x1.5
9	<i>HP-199A-9</i>	SLOTTED/CASTLE NUT M39x2
10	<i>HP-199A-10</i>	SPLIT PIN 55 x 6mm

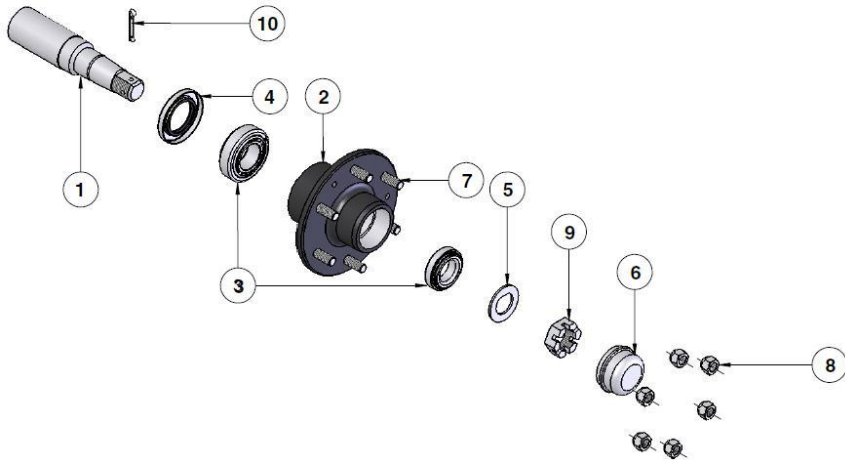
*Note: Parts in italics are non-stock items and may need to be ordered*

## CROPLANDS PART NUMBERS: BP-205A 4000L SOLID AXLE (PRE 2011 BPW)



Item	Part No.	Description	Qty
1	<b>HP-199A</b>	AXLE/HUB 6/205 70SQ (BPW)	2
	<b>MT10013</b>	SPEED SENSOR MOUNTING BRACKET ( <i>not shown</i> )	1

Note: Drawing is for illustration purpose only  
Refer to parts list.



**STUB AXLE HP-199A**

Item	Croplands P/N	Description
1	<i>HP-199ABPW-1</i>	STUB 70SQx300LG
2	<i>HP-199ABPW-2</i>	WHEELHUB 6/205 PCD
3	<i>HP-199ABPW-3</i>	BEARING KIT 32013/32207
4	<i>HP-199ABPW-4</i>	SEAL M100x68x12
4a	<i>HP-199ABPW-4a</i>	WEAR RING M80x69x6 ( <i>not shown</i> )
5	<b>N/A</b>	N/A
6	<i>HP-199ABPW-6</i>	DUST CAP 72.1mm (BPW)
7	<i>HP-199ABPW-7</i>	WHEEL STUD M18x1.5x46
8	<b>BP-545NUT BPW</b>	WHEEL NUT M18x1.5
8a	<b>BP-545WASHERBPW</b>	SPRING WASHER M18.5 ( <i>not shown</i> )
9	<i>HP-199ABPW-9</i>	SLOTTED/CASTLE NUT M36x1.5
10	<i>HP-199A-10</i>	SPLIT PIN 63 x 6.3mm

Note: Parts in italics are non-stock items and may need to be ordered