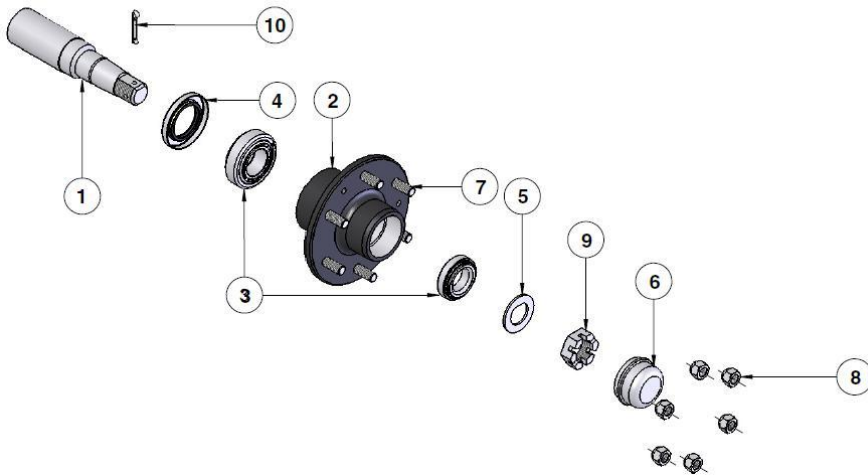


Item	Part No.	Description	Qty
1	HP-199E	STUB AXLE 6STUD 75MM SQUARE	2
2	HP-236CLA-2	AXLE BEAM	1
3	HP-236CLA-1	AXLE HOUSING	1
4	HP-236CL-1A	RUBBER SPRING A560-65	2
5	HP-236CL-1A-1	BUSH 32x13.5X22.5 (not shown)	2
6	MT10013	SPEED SENSOR MOUNTING BRACKET(not shown)	1

Note: Drawing is for illustration purpose only
Refer to parts list.



STUB AXLE HP-199E

Item	Croplands P/N	Description
1	HP-199E-1	STUB 75SQx395LG
2	HP-199E-2	WHEELHUB 6/205 PCD
3	HP-199E-3	BEARING KIT 32213/32210
4	HP-199E-4	TRIPLE LIP SEAL 125x90x12mm
4	HP-199E-4A	SEAL RING 70.5x90x16.5mm (not shown)
4	HP-199E-4B	WEAR RING (to suit T.L.S not shown)
5	N/A	N/A
6	HP-199E-6	DUST CAP (3 screws items 11 and 12)
7	HP-199F-7	WHEEL STUD M18x1.5x65
8	HP-199F-8	WHEEL NUT M18x1.5
9	HP-199E-9	SLOTTED/CASTLE NUT M39x2
10	HP-199E-10	SPLIT PIN 60 x 6mm
11	HP-199E-11	SOCKET HEAD CAP SCREW M8x30 (not shown)
12	HP-199E-12	M8 RIB LOCK WASHERS (not shown)

Note: Parts in italics are non-stock items and may need to be ordered