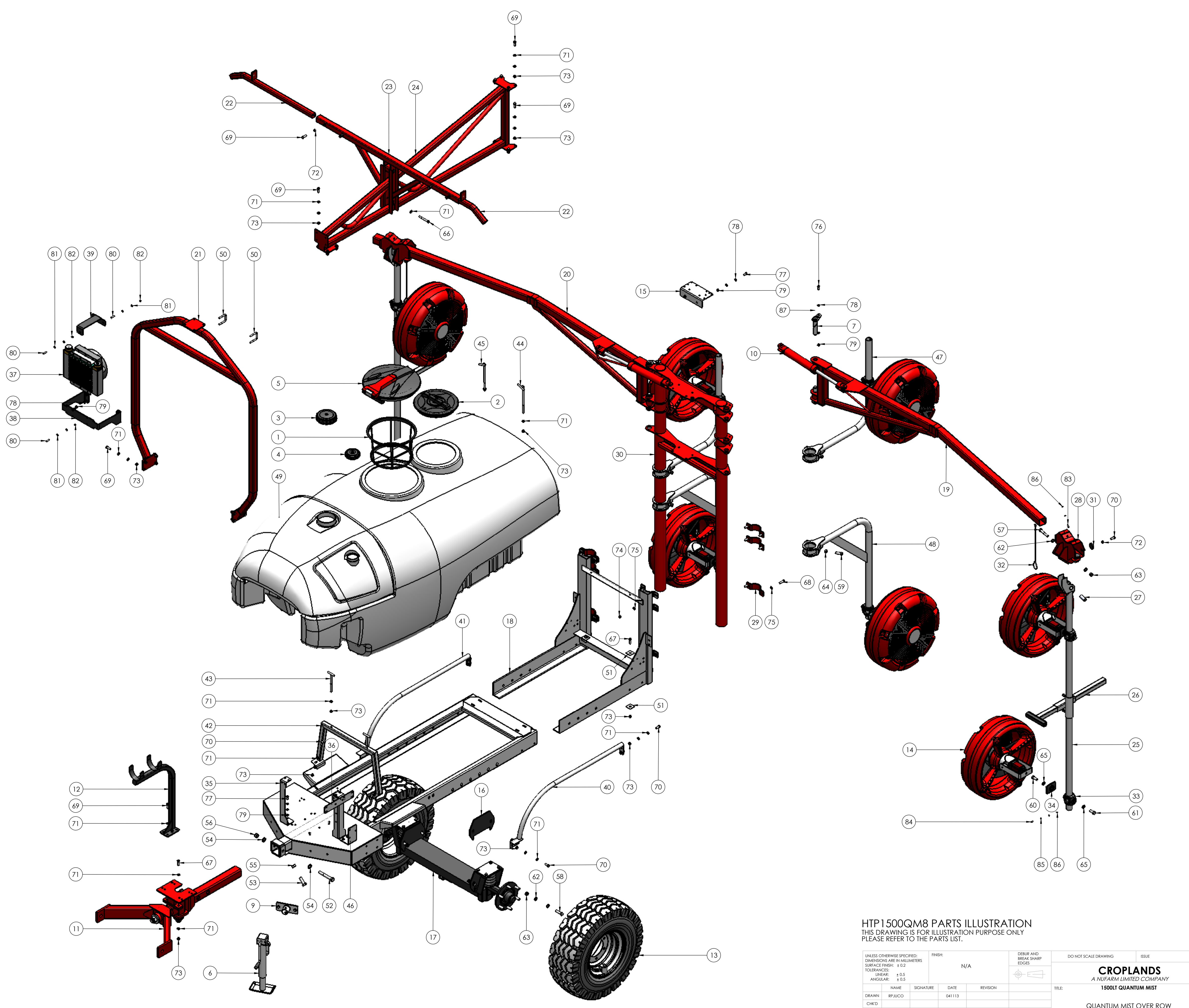


ITEM NO.	PART NUMBER	DESCRIPTION	QTY.
1	A300130	FILTER BASKET LARGE 254MM DEEP	1
2	A3510040	LID/RING KIT 355MM	1
3	A354010	LID 6" C/W SPRING BREATHER & OUTLET	1
4	A354030	LID 4" C/W BREATHER & SEAL	1
5	A356060	LID HINGED 180 DEGREE 455MM	1
6	BP-184A	JOCKEY STAND SHORT PINTO	1
7	BP-700-9AA	PIN 30MM X 155MM HAYLITE	4
8	HP1500ABA	CHASSIS 1500LT AIRBLAST HAYLITE	1
9	HP-006	SPIGOT PLATE JACK STAND	1
10	HP-016	HYDRAULIC CYLINDER 2.0 X 10	2
11	HP-024	SELF STEERING DRAWBAR 2PTL	1
12	HP-024-7	CABLE HOLDER BRACKET	1
13	HP-200	TYRE & WHEEL AWT 11.5/80-15.3	2
14	HP-219-31A	QM SARDI FAN RP 9.8 MOTOR w/ FLANGE	8
15	HP-229	MANIFOLD BRACKET HP-223C2	1
16	HP-236A-1	SPACER FOR SUSPENSION	2
17	HP-236F	SUSPENSION SINGLE AXLE 2000LT	1
18	HP-274A-1A	SUB FRAME QM 1500LT	1
19	HP-274A-2F	BOOM ARM LH VER4 2000LT	1
20	HP-274A-3F	BOOM ARM RH QM VER4 2000LT	1
21	HP-274A-4E	FRONT BRACE QM 2000LT	1
22	HP-274A-5	PARKING ARM	2
23	HP-274A-5-1	PARKING BRACKET QM	1
24	HP-274A-6E	TOP BRACE QM 1500LT	1
25	HP-274A-10	DROPPER ARM OUTER	2
26	HP-274A-10-3	QM DROPPER TUBE BUMPER	2
27	HP-274A-11	STEEL BUSH QM	2
28	HP-274A-12B	SWIVEL BRACKET ASSEMBLY V3	2
29	HP-274A-14	CLAMP HALF SADDLE 90MM	6
30	HP-274A-15A	MAIN TOWER ASSEMBLY QM	1
31	HP-274A-16A	NYLON BUTTON 50 X 10	8
32	HP-274A-18	ACTUATOR ROD SWIVEL BRACKET	2
33	HP-275C	CLAMP CAST QUICK ADJUST	8
34	HP-275C-1	CLAMP PLATE QM500	8
35	HP-286A	BRACKET ECM 3000LT QUANTUM	2
36	HP-289	MANIFOLD BRACKET A463CCRO08A	1
37	HP-298-15A	OIL COOLER 12V AIR TYPE HYDAC	1
38	HP-298-15A-1	BRACKET OIL COOLER	1
39	HP-298-15A-2	TOP SUPPORT BRACKET OIL COOLER	1
40	HP-304LA	SIDE RAIL 1500LT L.H. HAYLITE	1
41	HP-304RA	SIDE RAIL R.H. 1500LT HAYLITE	1
42	HP-311A	TANK SUPPORT FRONT 1500LT HAYLITE	1
43	HP-314	FRONT TIE DOWN ROD 2000LT	2
44	HP-315L	REAR LEFT TIE DOWN ROD	1
45	HP-315R	REAR RIGHT TIE DOWN ROD	1
46	HP-405	BRACKET FILTER SUCTION	1
47	HP-820	BRACKET QM HOOK TYPE 600 X 800	2
48	HP-829	BRACKET HOOK TYPE 600MM X 1000MM	2
49	P1500AB	TANK 1500LT POLY VP	1
50	XBMBB50	U-BOLT 50MM X 10	2
51	S0SQWASHER	50MM SQUARE WASHER	4
52	M20X140BOLT	M20 X 140 HEX HEAD BOLT HT ZP	1
53	M20X60	M20 X 60 SET SCREW HT ZP	2
54	M20FWASHER	M20 FLAT WASHER ZP	2
55	M20HNUT	M20 HALF NUT ZP	2
56	M20NNUT	M20 NYLOC NUT HT ZP	1
57	M16X100BOLT	M16 X 100 BOLT HT ZP	2
58	M16X60	M16 X 60 HEX HEAD SET SCREW HT ZP	4
59	M16X45SS	M16 X 45 S/S HEX HEAD SET SCREW	8
60	M16X40SS	M16 X 40 S/S HEX HEAD SET SCREW	8
61	M16X35SS	M16 X 35 S/S HEX HEAD SET SCREW	8
62	M16FWASHER	M16 FLAT WASHER ZP	12
63	M16NNUT	M16 NYLOC NUT HT ZP	6
64	M16SSHUT	M16 S/S HEX NUT	8
65	M16SSWASHER	M16 S/S SPRING WASHER	16
66	M12X100BOLT	M12 X 100 HEX HEAD BOLT HT ZP	2
67	M12X40	M12 X 40 HEX HEAD SET SCREW HT ZP	4
68	M12X40SS	M12 X 40 SET SCREW S/S HT ZP	12
69	M12X35	M12 X 35 SET SCREW HT ZP	26
70	M12X30	M12 X 30 SET SCREW HT ZP	16
71	M12FWASHER	M12 FLAT WASHER ZP	80
72	M12HNUT	M12 HEX NUT HT ZP	8
73	M12NNUT	M12 NYLOC NUT HT ZP	44
74	M12SSNNUT	M12 S/S NYLOC NUT	12
75	M12SSFWASHER	M12 S/S FLAT WASHER	24
76	M10X30	M10 X 30 SET SCREW HT ZP	4
77	M10X25	M10 X 25 SET SCREW HT ZP	8
78	M10FWASHER	M10 FLAT WASHER ZP	28
79	M10NNUT	M10 NYLOC NUT HT ZP	16
80	M8X30	M8 X 30 SET SCREW HT ZP	5
81	M8FWASHER	M8 FLAT WASHER ZP	10
82	M8NNUT	M8 NYLOC NUT HT ZP	5
83	M6X20CSSCREW	M6X20 C/S HEAD SCREW	4
84	M6X16	M6 X 16 SET SCREW HT ZP	6
85	M6FWASHER	M6 FLAT WASHER ZP	16
86	M6NNUT	M6 NYLOC NUT HT ZP	10
87	M6GNIPPLE	M6 GREASE NIPPLE	4



HTP 1500QM8 PARTS ILLUSTRATION
 THIS DRAWING IS FOR ILLUSTRATION PURPOSE ONLY
 PLEASE REFER TO THE PARTS LIST.

UNLESS OTHERWISE SPECIFIED: DIMENSIONS ARE IN MILLIMETERS SURFACE FINISH: ± 0.2 TOLERANCES: LINEAR: ± 0.5 ANGULAR: ± 0.5	FINISH: N/A	DEBUR AND BREAK SHARP EDGES	DO NOT SCALE DRAWING	ISSUE
DRAWN: RP/JACO		SIGNATURE	DATE: 04/11/13	REVISION
CHK'D:				
APP'VD:				
MFG:				
Q.A.				
MATERIAL: N/A		TITLE: CROPLANDS A NUFARM LIMITED COMPANY 1500LT QUANTUM MIST		
DWG NO. HTP1500QM8		QUANTUM MIST OVER ROW PARTS LIST 2013		
SCALE: 1:17.5		SHEET 1 OF 1		