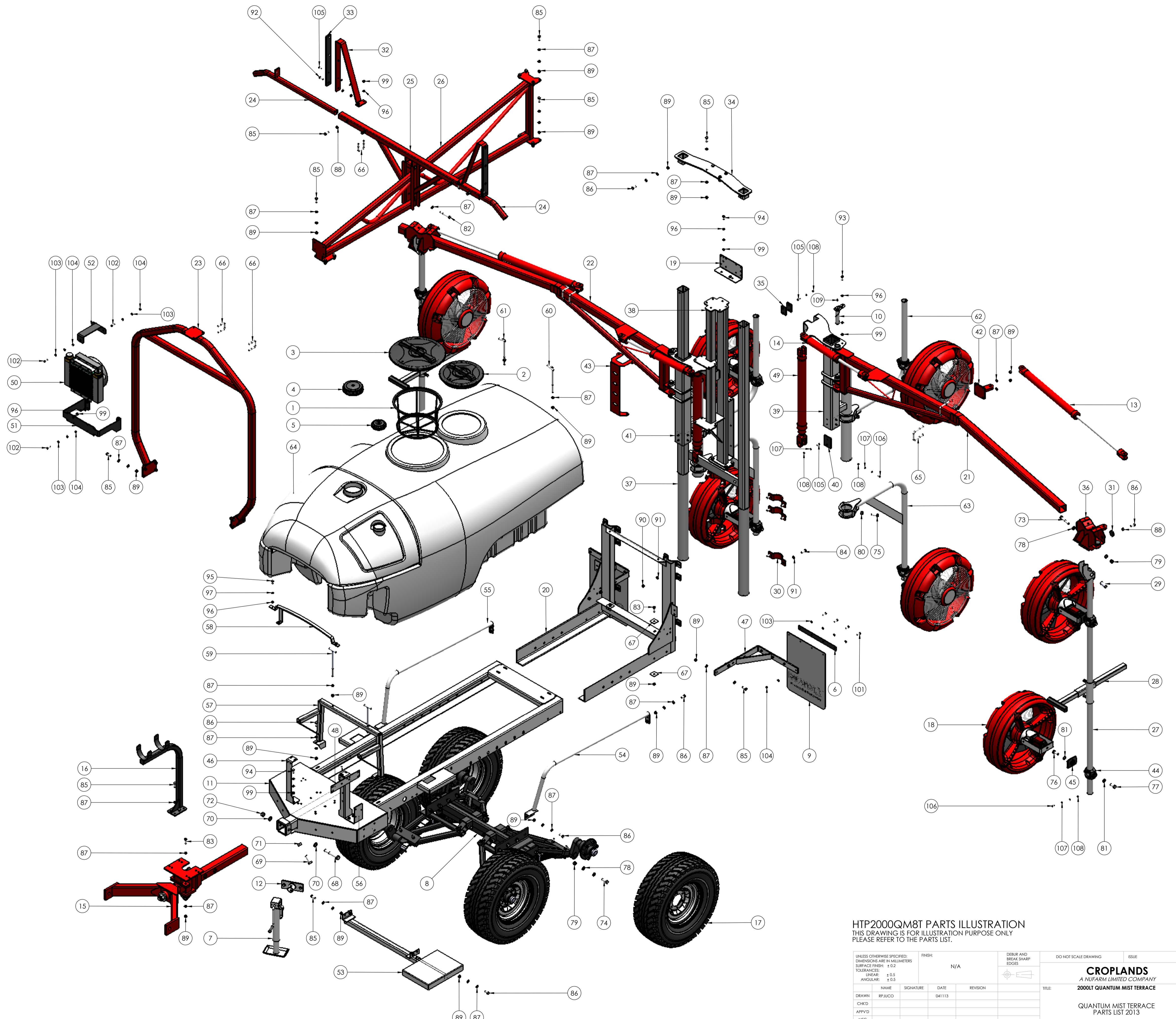


ITEM NO.	PART NUMBER	DESCRIPTION	QTY.
1	A300130	FILTER BASKET LARGE 254MM DEEP	1
2	A3510040	LID/RING KIT 355MM	1
3	A3510060	LID/RING KIT 455MM	1
4	A354010	LID 6" C/W SPRING BREATHER & OUTLET	1
5	A354030	LID 4" C/W BREATHER & SEAL	1
6	BP-180	MUDFLAP PLATE	2
7	BP-184A	JOCKEY STAND SHORT PINTO	1
8	BP-400D	SUSPENSION SIMPLICITY DROP AXLE	1
9	BP-542	MUDFLAP WHITE	2
10	BP-700-9AA	PIN 30MM X 1 155MM HAYLITE	4
11	HP2000ABA	CHASSIS AIRBLAST 2000LT HAYLITE	1
12	HP-006	SPIGOT PLATE JACK STAND	1
13	HP-014	HYDRAULIC CYLINDER 2 X 24	2
14	HP-016	HYDRAULIC CYLINDER 2.0 X 10	2
15	HP-024	SELF STEERING DRAWBAR 2PTL	1
16	HP-024-7	CABLE HOLDER BRACKET	1
17	HP-202	TYRE & WHEEL 10R X 15 LANDCRUISER	4
18	HP-219-31A	QM SARDI FAN RP 9.8 MOTOR w/ FLANGE	8
19	HP-229	MANIFOLD BRACKET HP-223C2	1
20	HP-274A-1	SUB FRAME QM 2000LT	1
21	HP-274A-2F	BOOM ARM LH VER4 2000LT	1
22	HP-274A-3F	BOOM ARM RH QM VER4 2000LT	1
23	HP-274A-4E	FRONT BRACE QM 2000LT	1
24	HP-274A-5	PARKING ARM	2
25	HP-274A-5-1	PARKING BRACKET QM	1
26	HP-274A-6F	TOP BRACE QM 2000LT	1
27	HP-274A-10	DROPPER ARM OUTER	2
28	HP-274A-10-3	QM DROPPER TUBE BUMPER	2
29	HP-274A-11	STEEL BUSH QM	2
30	HP-274A-14	CLAMP HALF SADDLE 90MM	6
31	HP-274A-16A	NYLON BUTTON 50 X 10	8
32	HP-274B-5-2	BOOM STOPPER TERRACE	2
33	HP-274B-5-2-1	NYLON PAD 50 X 10	2
34	HP-274B-7A	TOP BRACKET TERRACE	1
35	HP-274B-10	WEAR PAD 75 X 50 X 10MM	4
36	HP-274B-12B	SWIVEL BRACKET V3 FOR ORORA	2
37	HP-274B-15B	TOWER TERRACE	1
38	HP-274B-15B-1	CENTRE TOWER POST	1
39	HP-274B-16BL	BOOM SLIDE LH TERRACE	1
40	HP-274B-16BL-1	WEAR PAD 75 X 100 X 10	16
41	HP-274B-16BR	BOOM SLIDE RH TERRACE	1
42	HP-274B-18	BRACKET CYLINDER ORORA	2
43	HP-274B-20	LEVEL INDICATOR	1
44	HP-275C	CLAMP CAST QUICK ADJUST	8
45	HP-275C-1	CLAMP PLATE QM500	8
46	HP-286A	BRACKET ECM 3000LT QUANTUM	2
47	HP-288	BRACKET MUDFLAP BP-400D	2
48	HP-289	MANIFOLD BRACKET A463CCRO08A	1
49	HP-298-6	HYDRAULIC CYLINDER 2.5 X 24	2
50	HP-298-15A	OIL COOLER 12V AIR TYPE HYDAC	1
51	HP-298-15A-1	BRACKET OIL COOLER	1
52	HP-298-15A-2	TOP SUPPORT BRACKET OIL COOLER	1
53	HP-402A	RETRACTABLE STEP 2000LT	1
54	HP-404L	SIDE RAIL LH 2000LT	1
55	HP-404R	SIDE RAIL RH 2000LT	1
56	HP-405	BRACKET FILTER SUCTION	1
57	HP-411	FRONT TANK SUPPORT 2000LT	1
58	HP-413	CROSS BAR	1
59	HP-414	FRONT TIE DOWN ROD 2000LT	2
60	HP-415L	REAR LEFT TIE DOWN ROD 2000LT	1
61	HP-415R	REAR RIGHT TIE DOWN ROD 2000LT	1
62	HP-820	BRACKET QM HOOK TYPE 600 X 800	2
63	HP-829	BRACKET HOOK TYPE 600MM X 1000MM	2
64	P2000AAB-RAW	TANK 2000LT POLY RAW AIRBLAST	1
65	XBMBB45	U-BOLT 65MM X 12	4
66	XBMBB50	U-BOLT 50MM X 10	4
67	S05QWASHER	50MM SQUARE WASHER	4
68	M20X140BOLT	M20 X 140 HEX HEAD BOLT HT ZP	1
69	M20X60	M20 X 60 SET SCREW HT ZP	2
70	M20FWASHER	M20 FLAT WASHER ZP	2
71	M20HNUT	M20 HALF NUT ZP	2
72	M20NNUT	M20 NYLOC NUT HT ZP	1
73	M16X100BOLT	M16 X 100 BOLT HT ZP	2
74	M16X50	M16 X 50 HEX HEAD SET SCREW HT ZP	8
75	M16X45SS	M16 X 45 S/S HEX HEAD SET SCREW	8
76	M16X40SS	M16 X 40 S/S HEX HEAD SET SCREW	8
77	M16X35SS	M16 X 35 S/S HEX HEAD SET SCREW	8
78	M16FWASHER	M16 FLAT WASHER ZP	20
79	M16NNUT	M16 NYLOC NUT HT ZP	10
80	M16SSHUT	M16 S/S HEX NUT	8
81	M16SSWASHER	M16 S/S SPRING WASHER	16
82	M12X100BOLT	M12 X 100 HEX HEAD BOLT HT ZP	2
83	M12X40	M12 X 40 HEX HEAD SET SCREW HT ZP	4
84	M12X40SS	M12 X 40 SET SCREW S/S HT ZP	12
85	M12X35	M12 X 35 SET SCREW HT ZP	40
86	M12X30	M12 X 30 SET SCREW HT ZP	20
87	M12FWASHER	M12 FLAT WASHER ZP	124
88	M12HNUT	M12 HEX NUT HT ZP	8
89	M12NNUT	M12 NYLOC NUT HT ZP	70
90	M12SSNNUT	M12 S/S NYLOC NUT	12
91	M12SSFWASHER	M12 S/S FLAT WASHER	24
92	M10X35BHSCREW	M10 X 35 BUTTON HEAD SCREW S/S	2
93	M10X30	M10 X 30 SET SCREW HT ZP	4
94	M10X25	M10 X 25 SET SCREW HT ZP	8
95	M10X20	M10 X 20 SET SCREW HT ZP	2
96	M10FWASHER	M10 FLAT WASHER ZP	34
97	M10SWASHER	M10 SPRING WASHER ZP	2
98	M10SSFWASHER	M10 S/S FLAT WASHER	2
99	M10NNUT	M10 NYLOC NUT HT ZP	20
100	M10SSNNUT	M10 S/S NYLOC NUT	2
101	MBX35	M8 X 35 SET SCREW HT ZP	8
102	MBX30	M8 X 30 SET SCREW HT ZP	5
103	MBFWASHER	M8 FLAT WASHER ZP	26
104	MBNNUT	M8 NYLOC NUT HT ZP	13
105	M6X20CSSCREW	M6X20 C/S HEAD SCREW	50
106	M6X16	M6 X 16 SET SCREW HT ZP	8
107	M6FWASHER	M6 FLAT WASHER ZP	66
108	M6NNUT	M6 NYLOC NUT HT ZP	58
109	M6GNIPPLE	M6 GREASE NIPPLE	4



HTP2000QM8T PARTS ILLUSTRATION
 THIS DRAWING IS FOR ILLUSTRATION PURPOSE ONLY
 PLEASE REFER TO THE PARTS LIST.

UNLESS OTHERWISE SPECIFIED: DIMENSIONS ARE IN MILLIMETERS SURFACE FINISH: ± 0.2 TOLERANCES: LINEAR: ± 0.5 ANGULAR: ± 0.5	FINISH: N/A	REBUR AND BREAK SHARP EDGES	DO NOT SCALE DRAWING	ISSUE
DRAWN: BP/JACO		SIGNATURE:	DATE: 04/11/13	REVISION:
CHK'D:	APP'VD:	MFG:	Q.A.	
MATERIAL: N/A		WEIGHT:		SCALE: 1:17.5
CROPLANDS A NUFARM LIMITED COMPANY 2000LT QUANTUM MIST TERRACE QUANTUM MIST TERRACE PARTS LIST 2013				DWG NO: HTP2000QM8T SHEET 1 OF 1