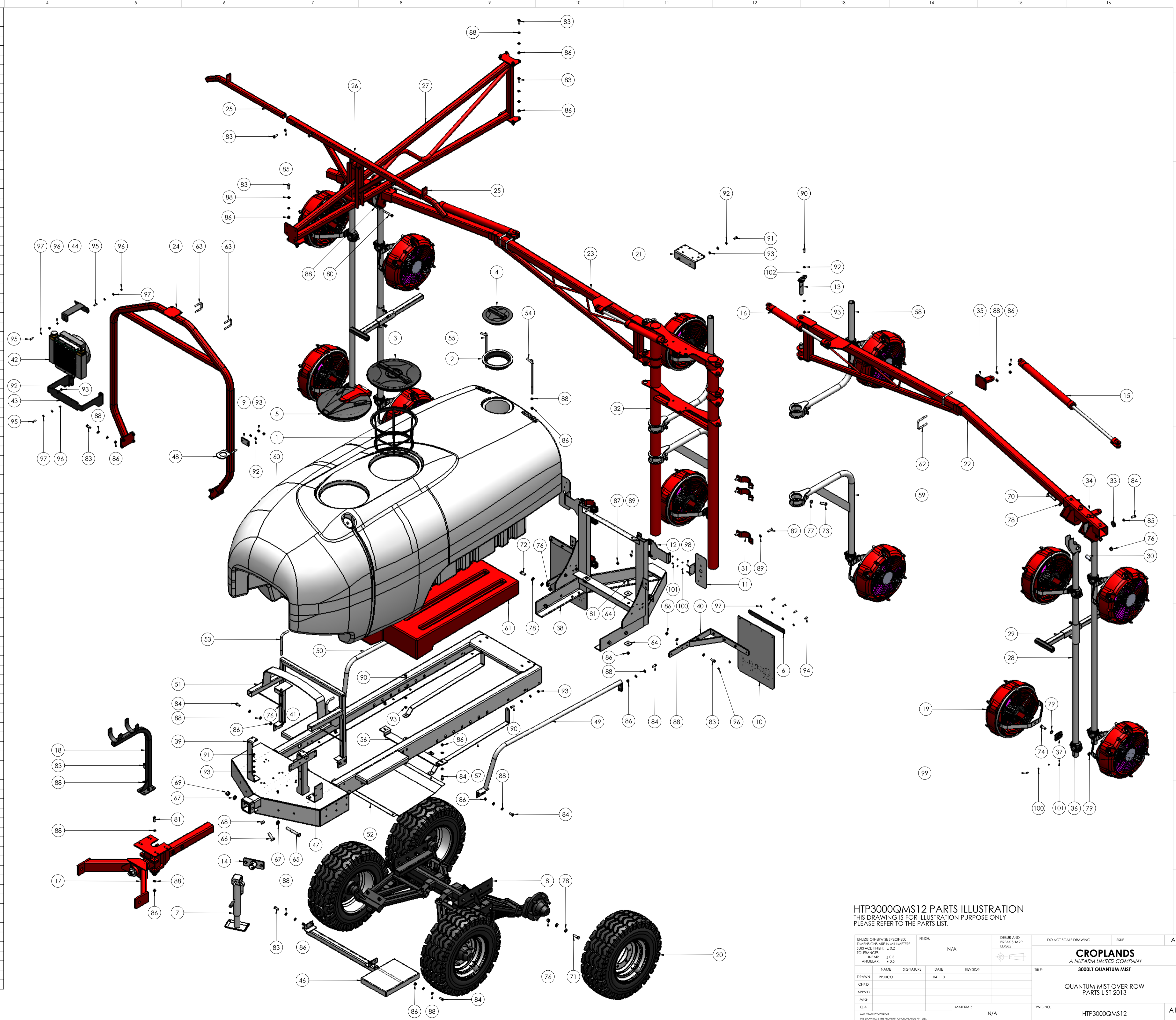


| ITEM NO. | PART NUMBER    | DESCRIPTION                       | QTY. |
|----------|----------------|-----------------------------------|------|
| 1        | A300130        | FILTER BASKET LARGE 254MM DEEP    | 1    |
| 2        | A350620        | LID RING WITH GASKET              | 1    |
| 3        | A3510060       | LID/RING KIT 455MM                | 1    |
| 4        | A3522120       | LID ONLY 255MM CLOSED             | 1    |
| 5        | A356060        | LID HINGED 180 DEGREE 455MM       | 1    |
| 6        | BP-180         | MUDFLAP PLATE                     | 2    |
| 7        | BP-184A        | JOCKEY STAND SHORT PINTO          | 1    |
| 8        | BP-400JLA      | SUSPENSION TANDEM 3000LT ANDYS    | 1    |
| 9        | BP-541         | PLATE FOR 50MM U-BOLT             | 1    |
| 10       | BP-542         | MUDFLAP WHITE                     | 2    |
| 11       | BP-635         | MOUNT PLATE TAIL LIGHT            | 2    |
| 12       | BP-635-1       | TAIL LIGHT EXTENSION BRACKET      | 2    |
| 13       | BP-700-9AA     | PIN 30MM X 1 155MM HAYLITE        | 4    |
| 14       | HP-006         | SPIGOT PLATE JACK STAND           | 1    |
| 15       | HP-014         | HYDRAULIC CYLINDER 2 X 24         | 2    |
| 16       | HP-016         | HYDRAULIC CYLINDER 2.0 X 10       | 2    |
| 17       | HP-024         | SELF STEERING DRAWBAR 2PTL        | 1    |
| 18       | HP-024-7       | CABLE HOLDER BRACKET              | 1    |
| 19       | HP-119B        | QUANTUM 380 CN                    | 12   |
| 20       | HP-200A        | TYRE & WHEEL AWT 10/75-15.3       | 4    |
| 21       | HP-229         | MANIFOLD BRACKET HP-223C2         | 1    |
| 22       | HP-274A-2G     | BOOM ARM LH QM VER4 3000LT        | 1    |
| 23       | HP-274A-3G     | BOOM ARM RH QM VER4 3000LT        | 1    |
| 24       | HP-274A-4B2    | FRONT BRACE QM 3000/4000          | 1    |
| 25       | HP-274A-5      | PARKING ARM                       | 2    |
| 26       | HP-274A-5-1    | PARKING BRACKET QM                | 1    |
| 27       | HP-274A-6G     | TOP BRACE QM 3000LT               | 1    |
| 28       | HP-274A-10     | DROPPER ARM OUTER                 | 4    |
| 29       | HP-274A-10-3   | QM DROPPER TUBE BUMPER            | 2    |
| 30       | HP-274A-11     | STEEL BUSH QM                     | 4    |
| 31       | HP-274A-14     | CLAMP HALF SADDLE 90MM            | 6    |
| 32       | HP-274A-15A    | MAIN TOWER ASSEMBLY QM            | 1    |
| 33       | HP-274A-16A    | NYLON BUTTON 50 X 10              | 8    |
| 34       | HP-274B-12C    | SWIVEL BRACKET 3 ROW ORORA        | 2    |
| 35       | HP-274B-18     | BRACKET CYLINDER ORORA            | 2    |
| 36       | HP-275C        | CLAMP CAST QUICK ADJUST           | 12   |
| 37       | HP-275C-2      | CLAMP PLATE QM380                 | 12   |
| 38       | HP-283E2       | SUB FRAME QM 3000LT VER 2         | 1    |
| 39       | HP-286A        | BRACKET ECM 3000LT QUANTUM        | 2    |
| 40       | HP-288         | BRACKET MUDFLAP BP-400D           | 1    |
| 41       | HP-289         | MANIFOLD BRACKET A463CCRO08A      | 1    |
| 42       | HP-298-15A     | OIL COOLER 12V AIR TYPE HYDAC     | 1    |
| 43       | HP-298-15A-1   | BRACKET OIL COOLER                | 1    |
| 44       | HP-298-15A-2   | TOP SUPPORT BRACKET OIL COOLER    | 1    |
| 45       | HP3000ABA      | CHASSIS 3000LT AIRBLAST HAYLITE   | 1    |
| 46       | HP-402A        | RETRACTABLE STEP 2000LT           | 1    |
| 47       | HP-405         | BRACKET FILTER SUCTION            | 1    |
| 48       | HP-434         | BRACKET DAM FILL 3000LT           | 1    |
| 49       | HP-504LA       | SIDE RAIL 3000LT LH               | 1    |
| 50       | HP-504RA       | SIDE RAIL 3000LT RH               | 1    |
| 51       | HP-511         | FRONT TANK SUPPORT 3000LT         | 1    |
| 52       | HP-512         | SUMP GUARD 3000LT                 | 1    |
| 53       | HP-514         | FRONT TIE DOWN ROD 3000LT         | 2    |
| 54       | HP-515L        | REAR LEFT TIE DOWN ROD 3000LT     | 1    |
| 55       | HP-515R        | REAR RIGHT TIE DOWN ROD 3000LT LT | 1    |
| 56       | HP-520         | CROSS RAIL BRACKET FLUSH TANK     | 1    |
| 57       | HP-521         | SUPPORT STRAP FLUSH TANK          | 2    |
| 58       | HP-820         | BRACKET QM HOOK TYPE 600 X 800    | 2    |
| 59       | HP-829         | BRACKET HOOK TYPE 600MM X 1000MM  | 2    |
| 60       | P3000AB-RAW    | 3000LT TANK POLY AIRBLAST RAW     | 1    |
| 61       | P3000AB-110RAW | FLUSH TANK 110LT 3000LT           | 1    |
| 62       | XBMBB65        | U-BOLT 65MM X 12                  | 4    |
| 63       | XBMBB50        | U-BOLT 50MM X 10                  | 2    |
| 64       | S0SQWASHER     | 50MM SQUARE WASHER                | 4    |
| 65       | M20X140BOLT    | M20 X 140 HEX HEAD BOLT HT ZP     | 1    |
| 66       | M20X60         | M20 X 60 SET SCREW HT ZP          | 2    |
| 67       | M20FWASHER     | M20 FLAT WASHER ZP                | 2    |
| 68       | M20HNUT        | M20 HALF NUT ZP                   | 2    |
| 69       | M20NNUT        | M20 NYLOC NUT HT ZP               | 1    |
| 70       | M16X100BOLT    | M16 X 100 BOLT HT ZP              | 4    |
| 71       | M16X50         | M16 X 50 HEX HEAD SET SCREW HT ZP | 8    |
| 72       | M16X40         | M16 X 40 HEX HEAD SET SCREW       | 4    |
| 73       | M16X45SS       | M16 X 45 S/S HEX HEAD SET SCREW   | 8    |
| 74       | M16X40SS       | M16 X 40 S/S HEX HEAD SET SCREW   | 12   |
| 75       | M16X35SS       | M16 X 35 S/S HEX HEAD SET SCREW   | 12   |
| 76       | M16NNUT        | M16 NYLOC NUT HT ZP               | 18   |
| 77       | M16SSHUT       | M16 S/S HEX NUT                   | 8    |
| 78       | M16FWASHER     | M16 FLAT WASHER ZP                | 34   |
| 79       | M16SSWASHER    | M16 S/S SPRING WASHER             | 24   |
| 80       | M12X100BOLT    | M12 X 100 HEX HEAD BOLT HT ZP     | 2    |
| 81       | M12X40         | M12 X 40 HEX HEAD SET SCREW HT ZP | 4    |
| 82       | M12X40SS       | M12 X 40 SET SCREW S/S HT ZP      | 12   |
| 83       | M12X35         | M12 X 35 SET SCREW HT ZP          | 32   |
| 84       | M12X30         | M12 X 30 SET SCREW HT ZP          | 24   |
| 85       | M12HNUT        | M12 HEX NUT HT ZP                 | 8    |
| 86       | M12NNUT        | M12 NYLOC NUT HT ZP               | 64   |
| 87       | M12SSNNUT      | M12 S/S NYLOC NUT                 | 12   |
| 88       | M12FWASHER     | M12 FLAT WASHER ZP                | 114  |
| 89       | M12SSFASHER    | M12 S/S FLAT WASHER               | 24   |
| 90       | M10X30         | M10 X 30 SET SCREW HT ZP          | 8    |
| 91       | M10X25         | M10 X 25 SET SCREW HT ZP          | 8    |
| 92       | M10FWASHER     | M10 FLAT WASHER ZP                | 38   |
| 93       | M10NNUT        | M10 NYLOC NUT HT ZP               | 22   |
| 94       | M8X35          | M8 X 35 SET SCREW HT ZP           | 8    |
| 95       | M8X30          | M8 X 30 SET SCREW HT ZP           | 5    |
| 96       | M8NNUT         | M8 NYLOC NUT HT ZP                | 13   |
| 97       | M8FWASHER      | M8 FLAT WASHER ZP                 | 26   |
| 98       | M6X20          | M6 X 25 SET SCREW HT ZP           | 4    |
| 99       | M6X16          | M6 X 16 SET SCREW HT ZP           | 8    |
| 100      | M6FWASHER      | M6 FLAT WASHER ZP                 | 24   |
| 101      | M6NNUT         | M6 NYLOC NUT HT ZP                | 12   |
| 102      | M6GNIPPLE      | M6 GREASE NIPPLE                  | 4    |



**HTP3000QMS12 PARTS ILLUSTRATION**  
 THIS DRAWING IS FOR ILLUSTRATION PURPOSE ONLY  
 PLEASE REFER TO THE PARTS LIST.

|  |                |                                   |                      |               |
|--|----------------|-----------------------------------|----------------------|---------------|
| UNLESS OTHERWISE SPECIFIED:<br>DIMENSIONS ARE IN MILLIMETERS<br>SURFACE FINISH: ± 0.2<br>TOLERANCES:<br>LINEAR: ± 0.5<br>ANGULAR: ± 0.5  | FINISH:<br>N/A | DEBUR AND<br>BREAK SHARP<br>EDGES | DO NOT SCALE DRAWING | ISSUE         |
| DRAWN: BP/JACO   |                | SIGNATURE:                        | DATE: 04/11/13       | REVISION:     |
| CHKD:  | APP'VD:        | MFG:                              | Q.A.                 | MATERIAL: N/A |
| COPYRIGHT PROPRIETOR:<br>ALL RIGHTS RESERVED BY NUFARM LIMITED. THIS DOCUMENT IS THE PROPERTY OF NUFARM LIMITED. IT IS TO BE USED ONLY FOR THE PURPOSES SPECIFIED AND IS NOT TO BE REPRODUCED OR TRANSMITTED IN ANY FORM OR BY ANY MEANS, ELECTRONIC OR MECHANICAL, INCLUDING PHOTOCOPYING, RECORDING, OR BY ANY INFORMATION STORAGE AND RETRIEVAL SYSTEM, WITHOUT THE WRITTEN PERMISSION OF NUFARM LIMITED. |                |                                   | WEIGHT:              | SCALE: 1:17.5 |

**CROPLANDS**  
 A NUFARM LIMITED COMPANY  
**3000LT QUANTUM MIST**

TITLE: QUANTUM MIST OVER ROW PARTS LIST 2013

DWG NO: HTP3000QMS12

SHEET 1 OF 1