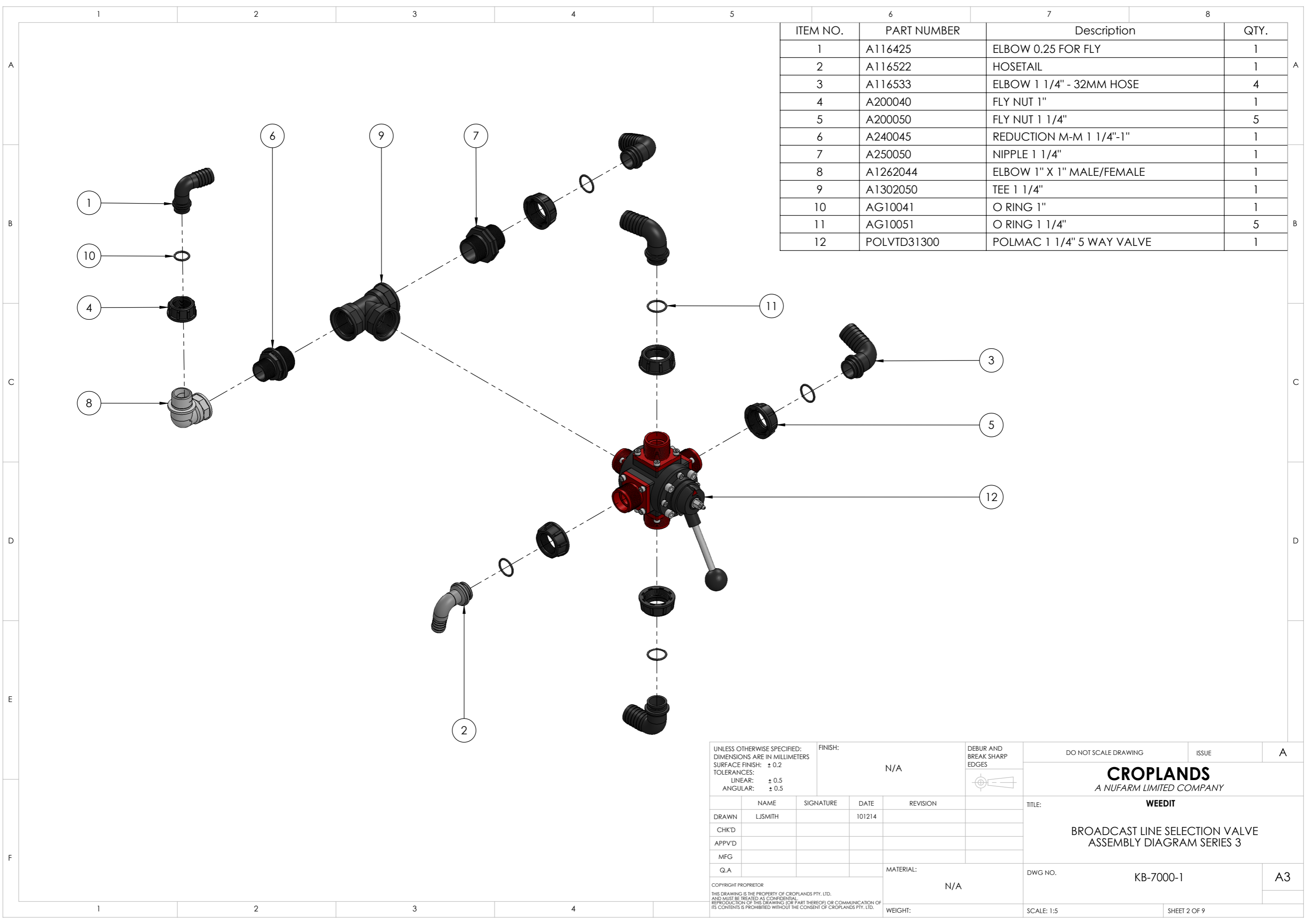


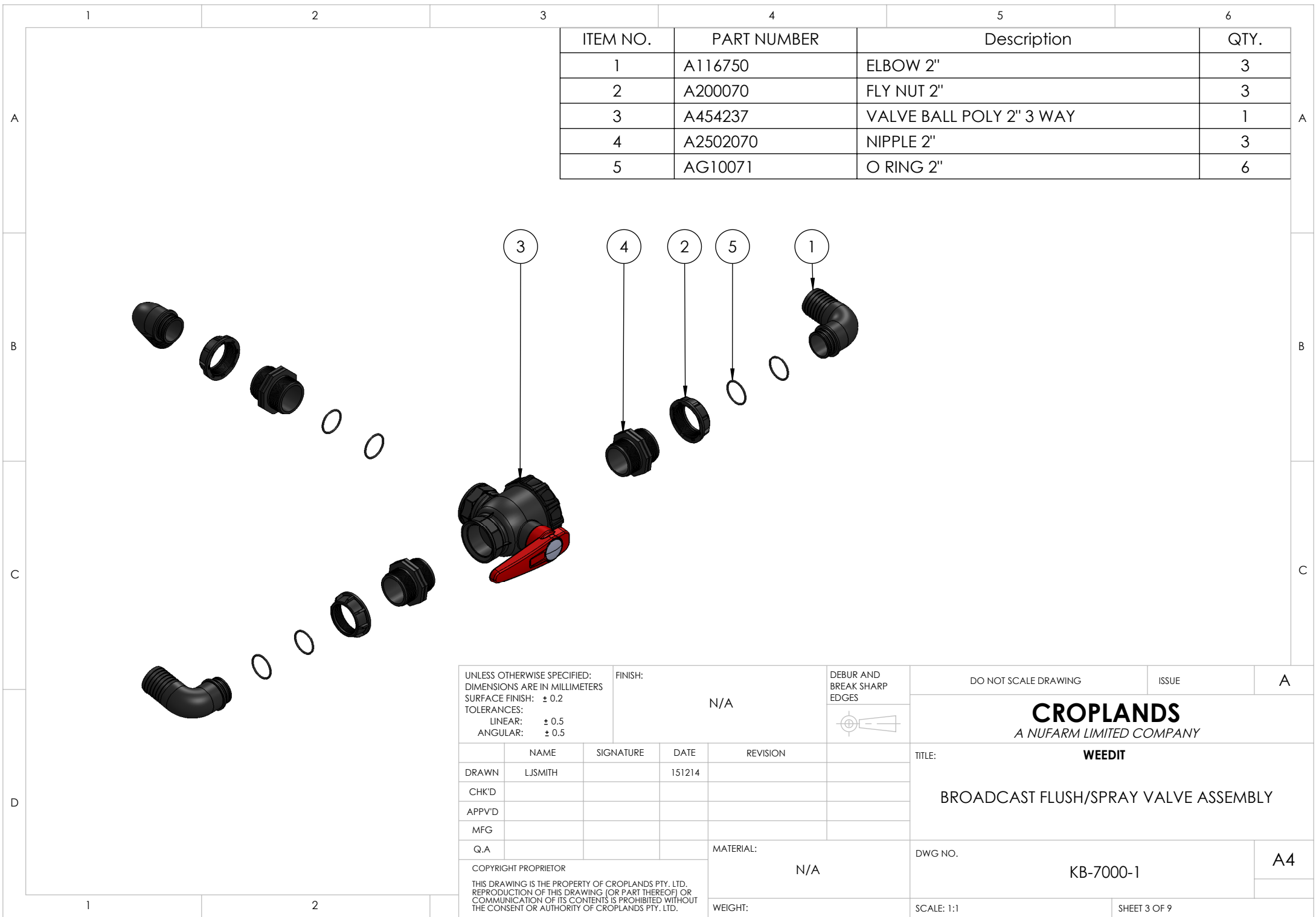
ITEM NO.	PART NUMBER	Description	QTY.
1	A3160F3 ecn	FILTER SUCTION T7 50MM	1
2	A010007	FORK D.5 INTERN.59	7
3	A31720F2	FILTER T7 50 MESH	1
4	A106625	TAIL 1 1/2" TO 25MM	1
5	A116533	ELBOW 1 1/4" - 32MM HOSE	1
6	A120066	ELBOW 1 1/2" X 1 1/2" FEMALE THREAD	1
7	A200050	FLY NUT 1 1/4"	1
8	A200060	FLY NUT 1 1/2"	1
9	A250030	NIPPLE 3/4"	1
10	A250050	NIPPLE 1 1/4"	1
11	A250060	NIPPLE 1 1/2"	2
12	A259177	NIPPLE T7M -T7M	1
13	A504015	NON RETURN VALVE 1 1/2" FEMALE	1
14	A1032532	HOSETAIL 1 1/4" D.32	2
15	A1090750	HOSETAIL T7F D.50	2
16	A1190750	ELBOW T7F D.50	4
17	A1302050	TEE 1 1/4"	1
18	AG10017	O RING	2
19	AG10051	O RING 1 1/4"	1
20	AG10061	O RING 1 1/2"	1
21	AG11017	O RING	4
22	B165.1501.4	BALL VALVE 1/2" X 3/8" RH	1
23	BJCPLG075	SOCKET NPT 3/4" NYLON	1
24	BJHB075-050	HOSEBARB 3/4" NPT X 1/2" BARB	1
25	BJHB100	HOSEBARB 1"NPT X 1" BARB	2
26	BP-700C-6-001	CONTROL PANEL WEEDIT	1
27	K-075-CAP	CAMLOCK 3/4" CAP "DC" POLY GLASS	1
28	K-075-F	CAMLOCK 3/4" MALE THREAD "F" POLY	1
29	K-150-CAP	CAMLOCK 1 1/2" CAP "DC" POLY	1
30	K-150-F	CAMLOCK 1 1/2" MALE THREAD "F"	1
31	KB-7000-1-001	BROADCAST FUNCTION SELECTION VALVE ASSEMBLY	1
32	KB-7000-1-002	BROADCAST FLUSH VALVE ASSEMBLY	1
33	KB-7000-1-003	RAMSEY VALVE RETURN VALVE ASSEMBLY	1
34	KB-7000-1-004	ACE PUMP VENT VALVE ASSEMBLY	1
35	KB-7000-1-005	WEEDIT FLOW CONTROL VALVE	1
36	KB-7000-1-006	WEEDIT RETURN MANIFOLD	1
37	KB-7000-1-007	WEEDIT FILL VALVE ASSEMBLY	1
38	KB-7000-1-008	WEEDIT AGITATOR AND RINSE VALVE ASSEMBLY	1
39	L-G1611	GAUGE 100MM 0-1600KPA 3/8" B/E	1
40	PH4622	ELBOW 3/4" FEMALE	1
41	PH5023	NON RETURN VALVE 1"	1
42	POL0003306.4CR	ONE WAY VALVE KIT 2"	1
43	POLCHRE0001	PONY FLOW 4 REMOTE DISPLAY	1
44	POLRF6012	HOSETAIL T7F D.50	1
45	TFA1212F	TAIL BRASS 1/2"BSPF X 1/2"TAIL	1
46	TFA3838	TAIL BRASS 3/8" BSPM X 3/8" TAIL	1
47	TFT3838FF	TEE 3/8" BSPF BRASS	1

UNLESS OTHERWISE SPECIFIED: DIMENSIONS ARE IN MILLIMETERS SURFACE FINISH: ± 0.2 TOLERANCES: LINEAR: ± 0.5 ANGULAR: ± 0.5		FINISH: N/A	DEBUR AND BREAK SHARP EDGES	DO NOT SCALE DRAWING	ISSUE	B
DRAWN LJSMITH			SIGNATURE	DATE 221014	REVISION	CROPLANDS A NUFARM LIMITED COMPANY TITLE: WEEDIT KB-7000-1 ASSEMBLY DIAGRAM
CHKD						
APPVD						
MFG						
Q.A				MATERIAL: N/A	DWG NO. KB-7000-1	A2
COPYRIGHT PROPRIETOR THE DRAWING IS THE PROPERTY OF CROPLANDS PTY. LTD. ALL RIGHTS RESERVED. NO REPRODUCTION OR COMMUNICATION OF THIS DRAWING IS PERMITTED WITHOUT THE WRITTEN CONSENT OF CROPLANDS PTY. LTD.		WEIGHT:	SCALE: 1:10	SHEET 1 OF 9		




ITEM NO.	PART NUMBER	Description	QTY.
1	A116425	ELBOW 0.25 FOR FLY	1
2	A116522	HOSETAIL	1
3	A116533	ELBOW 1 1/4" - 32MM HOSE	4
4	A200040	FLY NUT 1"	1
5	A200050	FLY NUT 1 1/4"	5
6	A240045	REDUCTION M-M 1 1/4"-1"	1
7	A250050	NIPPLE 1 1/4"	1
8	A1262044	ELBOW 1" X 1" MALE/FEMALE	1
9	A1302050	TEE 1 1/4"	1
10	AG10041	O RING 1"	1
11	AG10051	O RING 1 1/4"	5
12	POLVTD31300	POLMAC 1 1/4" 5 WAY VALVE	1

UNLESS OTHERWISE SPECIFIED: DIMENSIONS ARE IN MILLIMETERS SURFACE FINISH: ± 0.2 TOLERANCES: LINEAR: ± 0.5 ANGULAR: ± 0.5		FINISH: N/A	DEBUR AND BREAK SHARP EDGES 	DO NOT SCALE DRAWING	ISSUE	A																							
<table border="1"> <thead> <tr> <th>NAME</th> <th>SIGNATURE</th> <th>DATE</th> <th>REVISION</th> </tr> </thead> <tbody> <tr> <td>DRAWN</td> <td>LJSMITH</td> <td>101214</td> <td></td> </tr> <tr> <td>CHK'D</td> <td></td> <td></td> <td></td> </tr> <tr> <td>APPV'D</td> <td></td> <td></td> <td></td> </tr> <tr> <td>MFG</td> <td></td> <td></td> <td></td> </tr> <tr> <td>Q.A</td> <td></td> <td></td> <td></td> </tr> </tbody> </table>			NAME	SIGNATURE	DATE	REVISION	DRAWN	LJSMITH	101214		CHK'D				APPV'D				MFG				Q.A				<p>CROPLANDS A NUFARM LIMITED COMPANY</p> <p>TITLE: WEEDIT</p> <p>BROADCAST LINE SELECTION VALVE ASSEMBLY DIAGRAM SERIES 3</p>		
NAME	SIGNATURE	DATE	REVISION																										
DRAWN	LJSMITH	101214																											
CHK'D																													
APPV'D																													
MFG																													
Q.A																													
<small>COPYRIGHT PROPRIETOR THIS DRAWING IS THE PROPERTY OF CROPLANDS PTY. LTD. AND MUST BE TREATED AS CONFIDENTIAL. REPRODUCTION OF THIS DRAWING (OR PART THEREOF) OR COMMUNICATION OF ITS CONTENTS IS PROHIBITED WITHOUT THE CONSENT OF CROPLANDS PTY. LTD.</small>			MATERIAL: N/A	DWG NO.	KB-7000-1	A3																							
			WEIGHT:	SCALE: 1:5	SHEET 2 OF 9																								

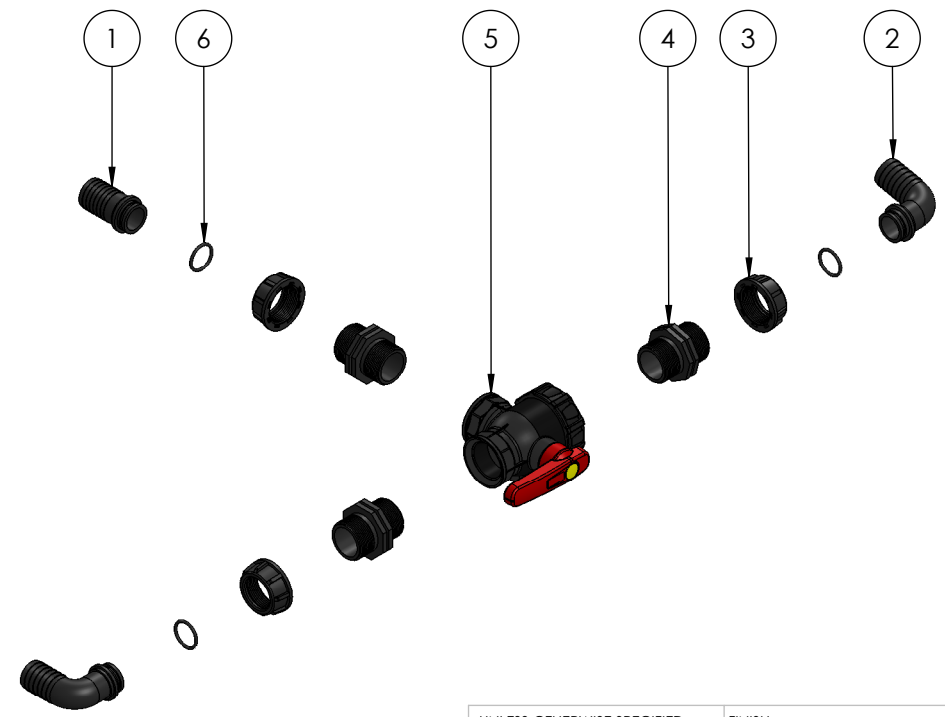



ITEM NO.	PART NUMBER	Description	QTY.
1	A116750	ELBOW 2"	3
2	A200070	FLY NUT 2"	3
3	A454237	VALVE BALL POLY 2" 3 WAY	1
4	A2502070	NIPPLE 2"	3
5	AG10071	O RING 2"	6

UNLESS OTHERWISE SPECIFIED: DIMENSIONS ARE IN MILLIMETERS SURFACE FINISH: ± 0.2 TOLERANCES: LINEAR: ± 0.5 ANGULAR: ± 0.5		FINISH: N/A		DEBUR AND BREAK SHARP EDGES 	
NAME	SIGNATURE	DATE	REVISION	TITLE:	
DRAWN LJSMITH		151214		WEEDIT	
CHK'D				BROADCAST FLUSH/SPRAY VALVE ASSEMBLY	
APPV'D				DWG NO.	
MFG				KB-7000-1	
Q.A			MATERIAL:	A4	
COPYRIGHT PROPRIETOR			N/A	SCALE: 1:1	
THIS DRAWING IS THE PROPERTY OF CROPLANDS PTY. LTD. REPRODUCTION OF THIS DRAWING (OR PART THEREOF) OR COMMUNICATION OF ITS CONTENTS IS PROHIBITED WITHOUT THE CONSENT OR AUTHORITY OF CROPLANDS PTY. LTD.			WEIGHT:	SHEET 3 OF 9	

DO NOT SCALE DRAWING	ISSUE	A
CROPLANDS A NUFARM LIMITED COMPANY		
BROADCAST FLUSH/SPRAY VALVE ASSEMBLY		
DWG NO.		A4
KB-7000-1		
SCALE: 1:1		SHEET 3 OF 9

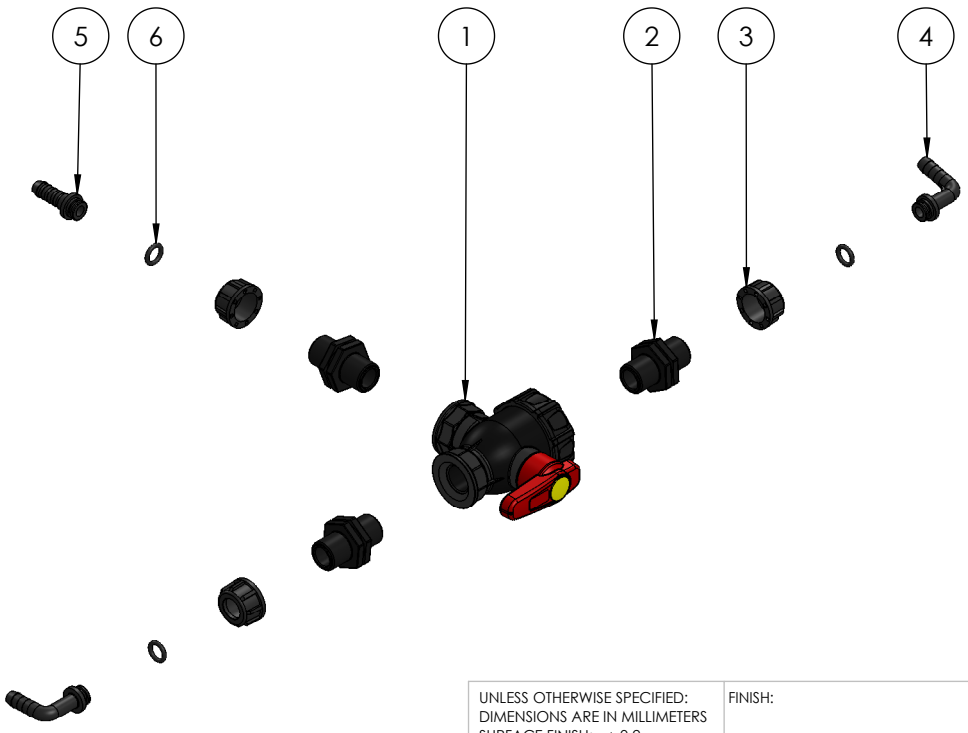
ITEM NO.	PART NUMBER	Description	QTY.
1	A106533	TAIL 1 1/4" TO 32MM	1
2	A116533	ELBOW 1 1/4" - 32MM HOSE	2
3	A200050	FLY NUT 1 1/4"	3
4	A250050	NIPPLE 1 1/4"	3
5	A454235	BALL VALVE POLY 1 1/4" 3 WAY	1
6	AG10051	O RING 1 1/4"	3



UNLESS OTHERWISE SPECIFIED: DIMENSIONS ARE IN MILLIMETERS SURFACE FINISH: ± 0.2 TOLERANCES: LINEAR: ± 0.5 ANGULAR: ± 0.5		FINISH: N/A		DEBUR AND BREAK SHARP EDGES 	
NAME	SIGNATURE	DATE	REVISION	MATERIAL: N/A	
DRAWN	LJSMITH	111214		WEIGHT:	
CHK'D				SCALE: 1:7.5	
APPV'D				SHEET 4 OF 9	
MFG					
Q.A					
COPYRIGHT PROPRIETOR					
THIS DRAWING IS THE PROPERTY OF CROPLANDS PTY. LTD. REPRODUCTION OF THIS DRAWING (OR PART THEREOF) OR COMMUNICATION OF ITS CONTENTS IS PROHIBITED WITHOUT THE CONSENT OR AUTHORITY OF CROPLANDS PTY. LTD.					

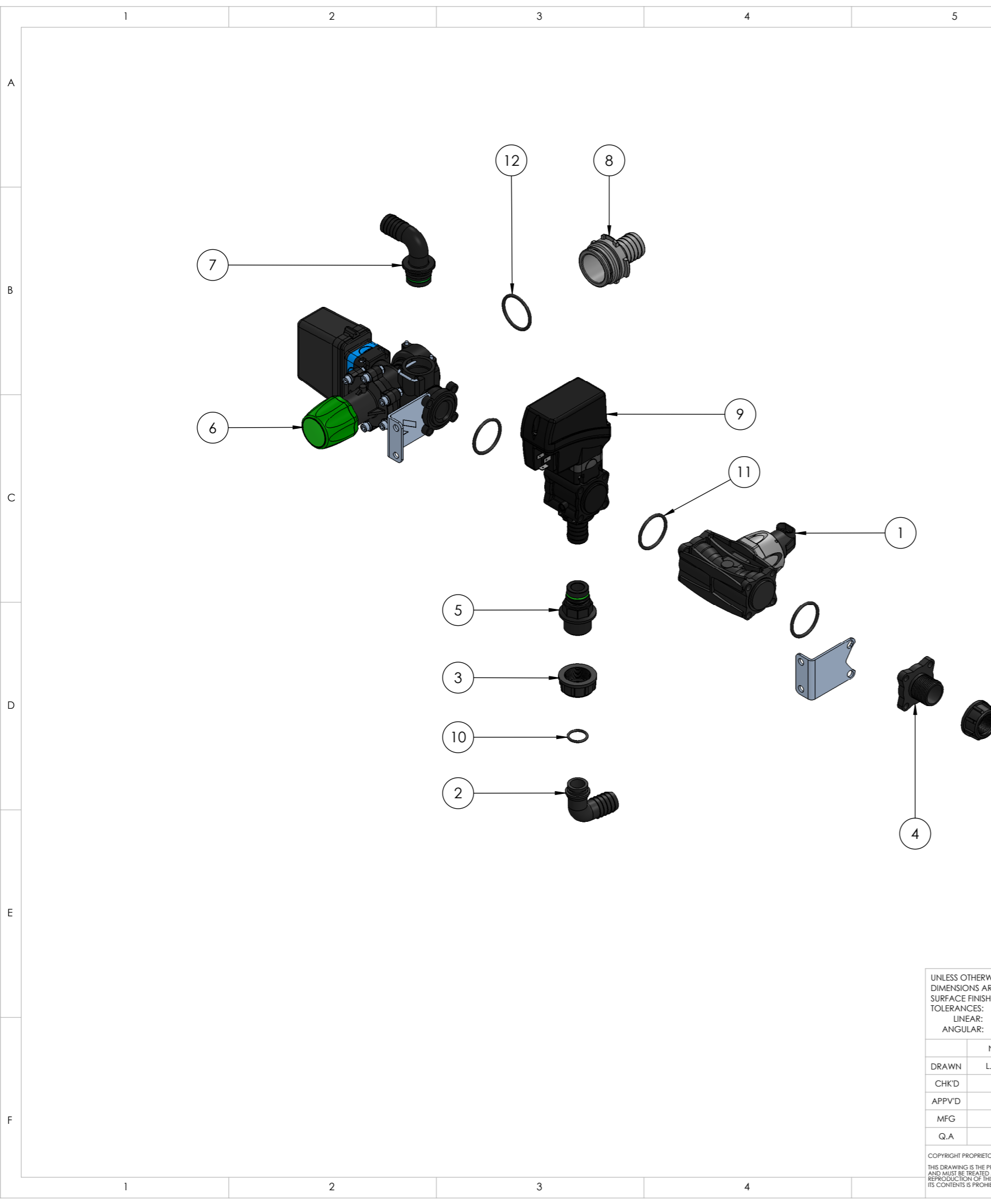
DO NOT SCALE DRAWING	ISSUE	A
CROPLANDS A NUFARM LIMITED COMPANY		
TITLE: WEEDIT		
RAMSEY VALVE RETURN ASSEMBLY DIAGRAM SERIES 3		
DWG NO.	KB-7000-1	A4

ITEM NO.	PART NUMBER	Description	QTY.
1	A454232	BALL VALVE POLY 1/2" 3 WAY	1
2	A2502020	NIPPLE 1/2"	3
3	A200020	FLY NUT 1/2" 12.5 MMD	3
4	A116210	ELBOW 10MM FOR FLY	2
5	A106211	TAIL 1/2" TO 11MM	1
6	AG10021	O RING	3



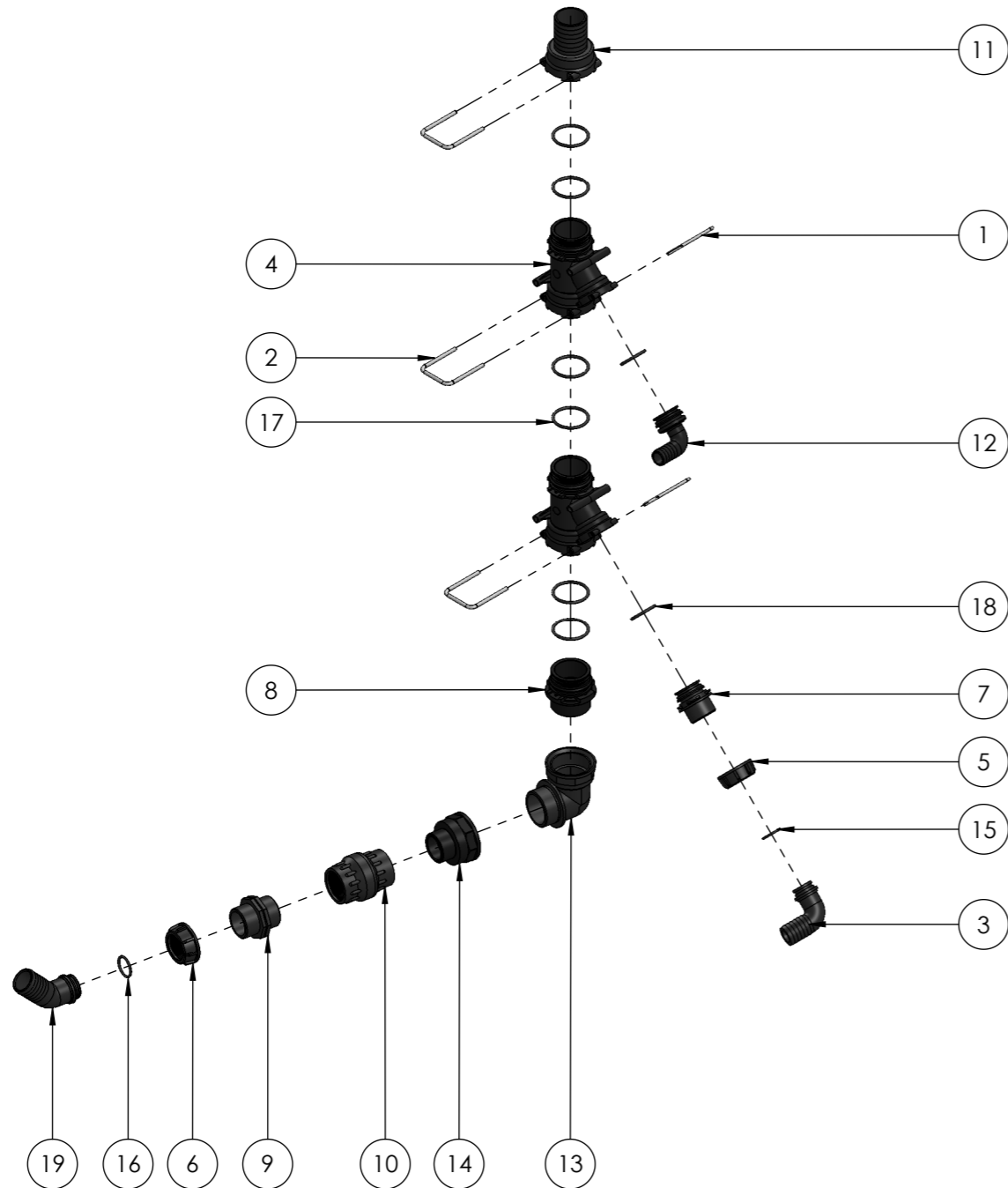
UNLESS OTHERWISE SPECIFIED: DIMENSIONS ARE IN MILLIMETERS SURFACE FINISH: ± 0.2 TOLERANCES: LINEAR: ± 0.5 ANGULAR: ± 0.5		FINISH: N/A		DEBUR AND BREAK SHARP EDGES 	
NAME	SIGNATURE	DATE	REVISION	MATERIAL: N/A	
DRAWN	LJSMITH	111214		WEIGHT:	
CHK'D				SCALE: 1:1	
APPV'D				SHEET 5 OF 9	
MFG					
Q.A					
COPYRIGHT PROPRIETOR			THIS DRAWING IS THE PROPERTY OF CROPLANDS PTY. LTD. REPRODUCTION OF THIS DRAWING (OR PART THEREOF) OR COMMUNICATION OF ITS CONTENTS IS PROHIBITED WITHOUT THE CONSENT OR AUTHORITY OF CROPLANDS PTY. LTD.		

DO NOT SCALE DRAWING	ISSUE	A
CROPLANDS A NUFARM LIMITED COMPANY		
TITLE: WEEDIT		
ACE PUMP VENT VALVE ASSEMBLY DIAGRAM SERIES 3		
DWG NO.	KB-7000-1	A4



ITEM NO.	PART NUMBER	Description	QTY.
1	A46264A0	FLOWMETER WOLF 10/200L FL463	1
2	A116425	ELBOW 0.25 FOR FLY	2
3	A200040	FLY NUT 1"	2
4	A463000.140	FLANGE 463SER VALVE 1"	1
5	A463001.B40	MALE OUTLET 1" BSP 463 16MM ID	1
6	A471502	RELIEF & DUMP VALVE ASSY	1
7	A473001.C25	ELBOW 25MM TO SUIT 471502	1
8	A1091632	TAIL 32MM T6	1
9	A8630024S	PROP CONTROL VALVE 7 SEC	1
10	AG10041	O RING 1"	2
11	AG10052	O RING	3
12	AG11023	O RING	1

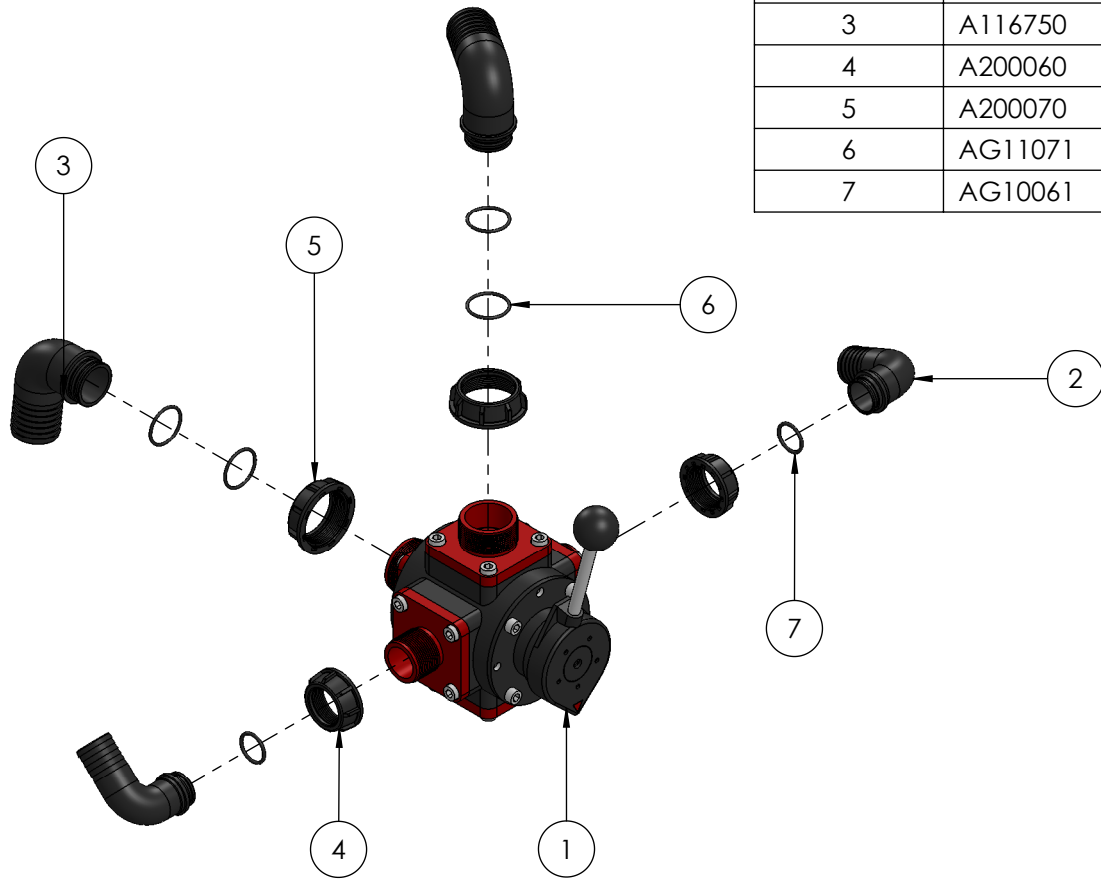
UNLESS OTHERWISE SPECIFIED: DIMENSIONS ARE IN MILLIMETERS SURFACE FINISH: ± 0.2 TOLERANCES: LINEAR: ± 0.5 ANGULAR: ± 0.5		FINISH: N/A	DEBUR AND BREAK SHARP EDGES 	DO NOT SCALE DRAWING	ISSUE	B																							
<table border="1"> <thead> <tr> <th>NAME</th> <th>SIGNATURE</th> <th>DATE</th> <th>REVISION</th> </tr> </thead> <tbody> <tr> <td>DRAWN</td> <td>LJSMITH</td> <td>150115</td> <td></td> </tr> <tr> <td>CHK'D</td> <td></td> <td></td> <td></td> </tr> <tr> <td>APPV'D</td> <td></td> <td></td> <td></td> </tr> <tr> <td>MFG</td> <td></td> <td></td> <td></td> </tr> <tr> <td>Q.A</td> <td></td> <td></td> <td></td> </tr> </tbody> </table>			NAME	SIGNATURE	DATE	REVISION	DRAWN	LJSMITH	150115		CHK'D				APPV'D				MFG				Q.A				<p>CROPLANDS A NUFARM LIMITED COMPANY</p> <p>TITLE: WEEDIT</p> <p>WEEDIT FLOW CONTROL VAVLE</p>		
NAME	SIGNATURE	DATE	REVISION																										
DRAWN	LJSMITH	150115																											
CHK'D																													
APPV'D																													
MFG																													
Q.A																													
<small>COPYRIGHT PROPRIETOR THIS DRAWING IS THE PROPERTY OF CROPLANDS PTY. LTD. AND MUST BE TREATED AS CONFIDENTIAL. REPRODUCTION OF THIS DRAWING (OR PART THEREOF) OR COMMUNICATION OF ITS CONTENTS IS PROHIBITED WITHOUT THE CONSENT OF CROPLANDS PTY. LTD.</small>			MATERIAL: N/A	DWG NO.	A3																								
			WEIGHT:	SCALE: 1:5	SHEET 6 OF 9																								




ITEM NO.	PART NUMBER	Description	QTY.
1	A010005	INLET FORK	2
2	A010007	FORK D.5 INTERN.59	3
3	A116533	ELBOW 1 1/4" - 32MM HOSE	1
4	A179275	MANIFOLD 3 WAY T7	2
5	A200050	FLY NUT 1 1/4"	1
6	A200060	FLY NUT 1 1/2"	1
7	A249155	HOSETAIL T5M 1" 1/4M	1
8	A249177	BULKHEAD T7M 2" M SHORT	1
9	A250060	NIPPLE 1 1/2"	1
10	A504015	NON RETURN VALVE 1 1/2" FEMALE	1
11	A1090750	HOSETAIL T7F D.50	1
12	A1191525	ELBOW T5M D.25	1
13	A1262077	ELBOW 2" MALE/FEMALE	1
14	A2452067	REDUCER 1 1/2" MALE -2" FEMALE	1
15	AG10051	O RING 1 1/4"	1
16	AG10061	O RING 1 1/2"	1
17	AG11017	O RING	6
18	AG11063	O RING EPDM	2
19	A117640	ELBOW 1 1/2" X 1 1/2" 45 DEG	1

UNLESS OTHERWISE SPECIFIED: DIMENSIONS ARE IN MILLIMETERS SURFACE FINISH: ± 0.2 TOLERANCES: LINEAR: ± 0.5 ANGULAR: ± 0.5		FINISH: N/A	DEBUR AND BREAK SHARP EDGES 	DO NOT SCALE DRAWING	ISSUE	A
DRAWN: LJSMITH			SIGNATURE	DATE: 101214	TITLE: CROPLANDS A NUFARM LIMITED COMPANY WEEDIT	
CHK'D					WEEDIT RETURN MANIFOLD ASSMEBLY DIAGRAM SERIES 3	
APPV'D					DWG NO. KB-7000-1	
MFG					A3	
Q.A			MATERIAL: N/A		SCALE: 1:10	
COPYRIGHT PROPRIETOR THIS DRAWING IS THE PROPERTY OF CROPLANDS PTY. LTD. AND MUST BE TREATED AS CONFIDENTIAL. REPRODUCTION OF THIS DRAWING (OR PART THEREOF) OR COMMUNICATION OF ITS CONTENTS IS PROHIBITED WITHOUT THE CONSENT OF CROPLANDS PTY. LTD.			WEIGHT:		SHEET 7 OF 9	

ITEM NO.	PART NUMBER	Description	QTY.
1	POLVTD90600	POLMAC 2" 5 WAY VALVE	1
2	A116638	38MM ELBOW	2
3	A116750	ELBOW 2"	2
4	A200060	FLY NUT 1 1/2"	2
5	A200070	FLY NUT 2"	2
6	AG11071	O RING 2"	4
7	AG10061	O RING 1 1/2"	2



UNLESS OTHERWISE SPECIFIED: DIMENSIONS ARE IN MILLIMETERS SURFACE FINISH: ± 0.2 TOLERANCES: LINEAR: ± 0.5 ANGULAR: ± 0.5		FINISH: N/A		DEBUR AND BREAK SHARP EDGES 	
NAME	SIGNATURE	DATE	REVISION	TITLE:	
DRAWN LJSMITH		121214		WEEDIT	
CHK'D				FILL VALVE ASSEMBLY DIAGRAM SERIES 3	
APPV'D				DWG NO.	
MFG				KB-7000-1	
Q.A			MATERIAL: N/A	A4	
COPYRIGHT PROPRIETOR			WEIGHT:	SCALE: 1:7.5	
THIS DRAWING IS THE PROPERTY OF CROPLANDS PTY. LTD. REPRODUCTION OF THIS DRAWING (OR PART THEREOF) OR COMMUNICATION OF ITS CONTENTS IS PROHIBITED WITHOUT THE CONSENT OR AUTHORITY OF CROPLANDS PTY. LTD.				SHEET 8 OF 9	

DO NOT SCALE DRAWING ISSUE A

CROPLANDS
A NUFARM LIMITED COMPANY

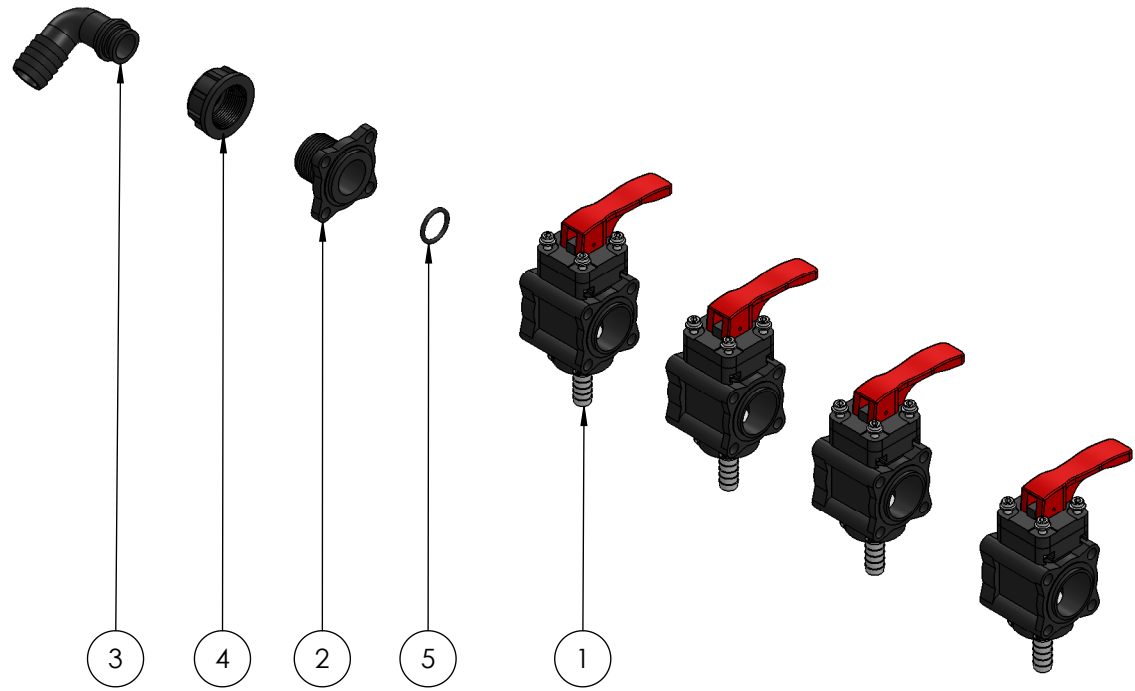
WEEDIT

FILL VALVE ASSEMBLY
DIAGRAM SERIES 3

DWG NO. KB-7000-1 A4

SCALE: 1:7.5 SHEET 8 OF 9

ITEM NO.	PART NUMBER	Description	QTY.
1	A463051	VALVE MANUAL 13MM TAIL	4
2	A463000.040	FLANGE 463 SERIES 1" BSP	1
3	A116425	ELBOW 0.25 FOR FLY	1
4	A200040	FLY NUT 1"	1
5	AG10041	O RING 1"	1



UNLESS OTHERWISE SPECIFIED: DIMENSIONS ARE IN MILLIMETERS SURFACE FINISH: ± 0.2 TOLERANCES: LINEAR: ± 0.5 ANGULAR: ± 0.5		FINISH: N/A		DEBUR AND BREAK SHARP EDGES 	
NAME	SIGNATURE	DATE	REVISION	TITLE: WEEDIT AGITATOR AND RINSE VALVES ASSEMBLY DIAGRAM SERIES 3	
DRAWN	LJSMITH	121214			
CHK'D					
APPV'D					
MFG					
Q.A			MATERIAL: N/A	DWG NO. KB-7000-1	
COPYRIGHT PROPRIETOR			WEIGHT:		
THIS DRAWING IS THE PROPERTY OF CROPLANDS PTY. LTD. REPRODUCTION OF THIS DRAWING (OR PART THEREOF) OR COMMUNICATION OF ITS CONTENTS IS PROHIBITED WITHOUT THE CONSENT OR AUTHORITY OF CROPLANDS PTY. LTD.			SCALE: 1:5		

DO NOT SCALE DRAWING	ISSUE	A
CROPLANDS A NUFARM LIMITED COMPANY		
WEEDIT		
AGITATOR AND RINSE VALVES ASSEMBLY DIAGRAM SERIES 3		
DWG NO. KB-7000-1		A4
SCALE: 1:5		SHEET 9 OF 9