

# TRANSPORT, UNLOADING & SETUP GUIDE

[WWW.CROPLANDS.COM.AU](http://WWW.CROPLANDS.COM.AU)

**CROPLANDS**

**STOP**

**BEFORE COMMENCING**  
operation, **ENSURE** you read  
& understand this manual, its  
contents, and any additional  
information supplied.



BT-OMWEED-TRANS v4

Specifications subject to change without notice

**WEED-IT**   
precision spraying

# BOOM TRANSPORT, UNLOADING & SET-UP GUIDE

## VERSION 4

Please read this guide, the Transport Kit information, and Croplands Safety booklet before unloading the WEED-IT sprayer.

Items required for assembly and set up.

- Suitable lifting equipment to remove upper 6 metre boom tip from the transport position, (approximate weight of the 6-metre boom is 500kgs).
- Tension wrenches capable of 800 Nm and 235Nm tension.
- Tyre inflation equipment and pressure gauge to suit.
- WEEDit Transport Kit Information sheet BT-OMWEED-MP375, (2 pages - should be in the red box with controllers etc).



## CROPLANDS

### WEEDit Transport Kit, (MP-375) – version 4

#### WEEDit Transport Brackets & Frames: [Return to Croplands after delivery.](#)

WEEDit Sprayers with booms longer than 28 metres are shipped double tiered with the outer castor wheels supplied in separate frames. This requires a variety of brackets, braces & hardware, as per this document.

Customers are billed for the transport kit – which is [refunded upon return](#) of all components – all larger **YELLOW** items on a pallet along with smaller items, plates and hardware in the spare red crate.

- Note: From time to time items supplied will vary from the standard transport kit.
- Use these pages to check off supplied & returned components.
- Steer (main) wheel shock absorbers are exchanged with rigid bars (HP-379-1) for truck transporting.

Delivery will include the caster wheels bolted to the MP-379 frames, and then used to support the boom to the truck's trailer.



Delivery includes shocks, controllers, manuals etc all wrapped to a pallet along with a spare crate. [Please use the pallet & spare crate to ship the transport kit components back to Croplands.](#) Boom protection bars (pictured below) are usually fitted to the sprayer.



*Versions shown below are for "RED" tech. QUADRO "BLUE" tech versions have some modification to the original parts.*

			
MP-371-1L QTY: 1	MP-371-1R QTY: 1	MP-371-3 QTY: 2	MP-371-2 QTY: 4
Use plate MP-371-2	Use plate MP-371-2	Mount to MP371-1L / 1R	Use with MP371-1L / 1R

extra pads used on Quadro

BT-OMWEED-MP375, (v4) 09/08/2021

PRODUCT INFORMATION

Specifications subject to change without notice



WEED-IT sprayers are delivered with the castor wheels installed into individual frames which are also used to support the boom to the trailer's bed.

1. Prepare to unload from the truck. Remove all tie downs etc.
2. Unload both castor wheel & frame assemblies (yellow frame & content in adjacent picture).
3. Connect suitable size tractor to WEEDit unit and tow off the truck - **slowly and carefully**. Check the clearance between the spray rails and truck ramps as the machine is unloaded. **This is not a 1 man job.**  
**Maximum transport distance of 1 km below 5 km/h until upper boom is removed.**
4. Loosen hardware for the yellow transport stands that are attaching the upper boom to the lower boom. Place suitable lifting device under the boom, remove the mounting hardware.



5. Raise the upper boom, slowly, making sure it clears the structure below (note the left-hand side needs to clear the 3 x vertical "bumper" bars). Once clear, tow the WEEDit forwards and lower outer boom to a suitable working height.



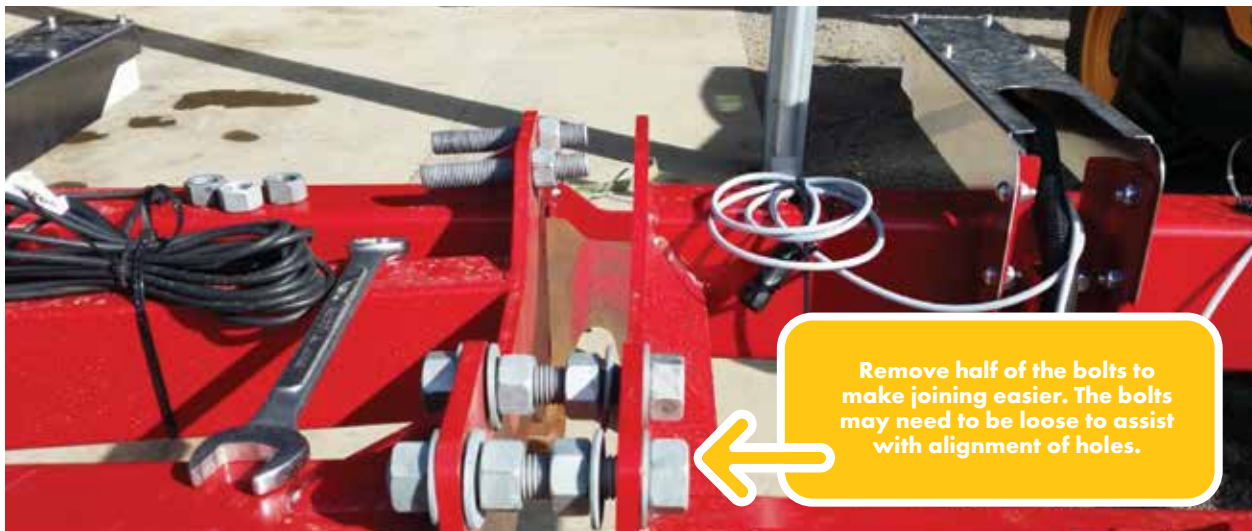
6. Remove front & rear transport stands.

# BOOM TRANSPORT, UNLOADING & SET-UP GUIDE

## VERSION 4



- Reverse the WEEDit unit (or very carefully take outer boom to the unit) to connect the booms together.



- Join boom together. Add all of the bolts and washers leave them loose to assist with the boom alignment.



9. Fit all nuts and washers, adjust top outer bolts first to get 1000mm spacing between the centre lines of the cameras at the join point.

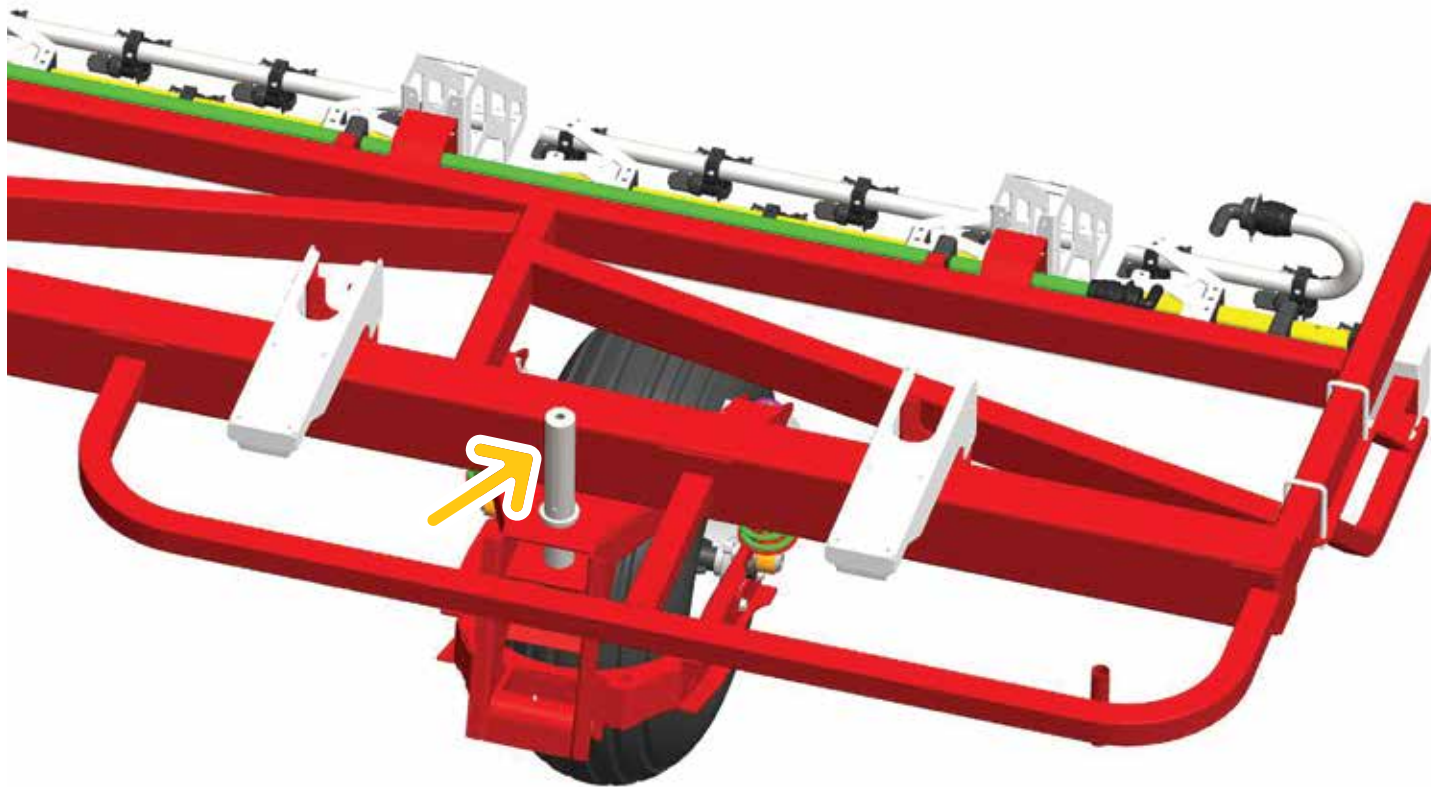


10. Swap out the yellow Steer wheel transport bars for the supplied shock absorbers. Must use a jack or support stand to prevent the boom dropping whilst performing this task. Note the inner / "steer" wheel assembly uses black coil springs, and the outer / "castor" wheel assembly uses red coloured springs.

With the wheel still raised clear of the ground (see more next page), add 80 psi to both shock absorbers.

# BOOM TRANSPORT, UNLOADING & SET-UP GUIDE

## VERSION 4



11. Fit outer castor wheels while outer boom is supported by the forklift. Position between the last 2 WEEDit sensors as per the diagram above. It's the same for 36 or 30m boom. Note the pivot pin is to the front of the main boom section - the mounting saddle plates have been hidden for clarity of pin position.
12. With the wheel raised clear of the ground, add 80 psi to both shock absorbers.

To protect the airbag, it's vital the initial pressurisation of the airbag is done with the wheel raised clear of the ground.

Both shock absorbers in each set must be the same pressure.

Fine adjustment will be done at a later stage (see #22, page 10).

13. Set all boom tyre pressures to 15 psi. The boom can now free stand.
14. Adjust the top inner bolts to align all camera brackets.
15. Adjust all 4 lower bolts to get the boom parallel to the ground at the join point.  
Tension all nuts to 800Nm.



16. Remove yellow inner pivot brace. Remember to return all **"Yellow"** Transport kit components, including nuts, bolts and washers to Croplands for credit.

Place all hardware and plates in the red crate in preparation for return to Croplands along with all **"Yellow"** items.

Collect and pack all **"Yellow"** items for return. See the transport kit guide, BT-OMWEED-MP375.



# BOOM TRANSPORT, UNLOADING & SET-UP GUIDE

## VERSION 4

17. Connect all spray lines (spot, blanket (if applicable) and fence line) and all WEED-IT / electrical connections between the main boom and tip sections.



18. Fit boom bumper bars (if not fitted at the time of delivery).

Normally the one-piece Horizontal Bump bar is fitted to the left-hand boom, and the 3 single Vertical Bump arms are fitted to the right-hand side. The photos below show fitment to the opposite sides.

Preferred Bumper bar position for 36m boom is on the "intermediate" arm (as shown at bottom). Shorter booms will require the bump guards to be mounting on the inner arm.



19. Fit and connect all controllers to the tractor as per the operator's manuals supplied with each controller.
20. Connect all electrical and hydraulic fittings between the tractor and WEEDit unit.
21. Adjust WEEDit chassis air bag ride height valve until the first WEEDit sensor on the boom is near 1100mm from the ground to lens of the sensor, (system needs to be powered up / air compressor working).



## CAUTION

**Other factors such as drawbar height (either side of 450mm), tyre pressures (sprayer & boom) and airbag pressures will also influence this height. Fine tune sensor heights at the completion of the install.**

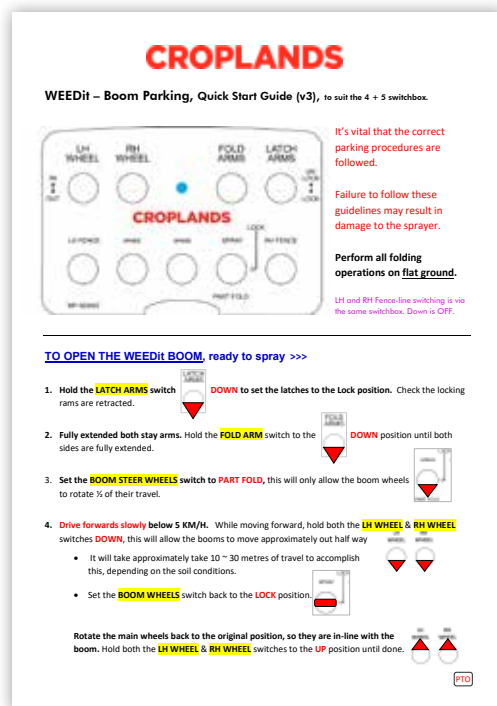


# BOOM TRANSPORT, UNLOADING & SET-UP GUIDE

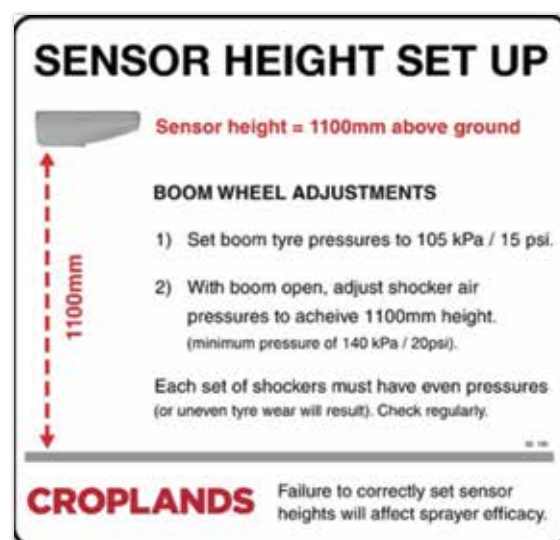
## VERSION 4

### 22. Set boom airbag heights.

- Note this should only be done with the sprayer on flat ground and the boom open to the spray position. Use the quick start folding guide BT-OMWEED-QSG-B to fold the boom out to the working position



- There needs to be always a minimum of 20psi in the shocker!
- Both shockers in each set must be the same pressure



### 23. Tension boom wheel bolts to a minimum of 235Nm (173 ft.lbs.)

- With the boom in the working position, slowly release air evenly from both shockers (at this stage the airbags should have 80 psi) to achieve a camera working height of 1100 mm.



This stop bolt is used to align the "Steer" wheel in the road travel/transport position.

24. The boom steering wheels have a "tracking" bolts which will require adjustment. The wheels should have a small amount of toe out when travelling forward to keep the booms apart when cornering. Set the boom to the transport position and drive forward slowly, there should be a minimum of 200 mm clearance between the bumper bars, rotate the top steer wheel stop bolt out to increase the clearance between the boom "bumper" bars, check that one side is not wider at the rear than the other side.



Correctly set up boom

This is the old position for the boom bumpers – correct (v2) position is on the intermediate section, closer to the tip.



This picture is an example of an incorrectly adjusted boom. The left boom is too wide; Rotate the top bolt in half a turn on the left boom and test.

# BOOM TRANSPORT, UNLOADING & SET-UP GUIDE

## VERSION 4

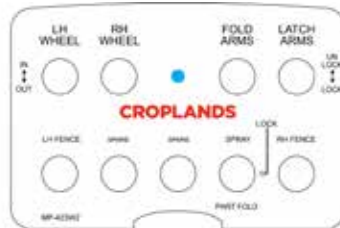


25. Adjust the drawbar to achieve 1100mm camera height on the central cameras – as a guide, the main chassis sits approximately 6 degrees nose down from

horizontal, and the upright tank supports are 90 degrees from horizontal, when correctly adjusted.  
Note this will also influence the boom ride height (see #21).

## CROPLANDS

WEEDit – Boom Parking, Quick Start Guide (v3), to suit the 4 + 5 switchbox.



It's vital that the correct parking procedures are followed.

Failure to follow these guidelines may result in damage to the sprayer.

Perform all folding operations on flat ground.

LH and RH Fence-line switching is via the same switchbox. Down is OFF.

**TO OPEN THE WEEDit BOOM, ready to spray >>>**

1. Hold the **LATCH ARMS** switch **DOWN** to set the latches to the Lock position. Check the locking arms are retracted.
2. Fully extended both stay arms. Hold the **FOLD ARM** switch to the **DOWN** position until both sides are fully extended.
3. Set the **BOOM STEER WHEELS** switch to **PART FOLD**, this will only allow the boom wheels to rotate 1/2 of their travel.
4. **Drive forwards slowly below 5 KM/H.** While moving forward, hold both the **LH WHEEL & RH WHEEL** switches **DOWN**, this will allow the booms to move approximately out half way
  - It will take approximately take 10 ~ 30 metres of travel to accomplish this, depending on the soil conditions.
  - Set the **BOOM WHEELS** switch back to the **LOCK** position.

Rotate the main wheels back to the original position, so they are in-line with the boom. Hold both the **LH WHEEL & RH WHEEL** switches to the **UP** position until done.

PTO

5. **Reverse slowly** until the booms arms have opened all the way and the fold arms have **latched into the locks**.

- If one side latches before the other side use the wheel switch to rotate the wheel to the field position to prevent the wheels from bulldozing.
- It may take around 10 metres of travel to accomplish this, depending on the soil conditions.
- Do not continue to reverse with wheels in this position.
- **Double check** that both stay arms are docked & locked.



6. Rotate both main wheels "outwards" 90 degrees, to now point forwards in the direction of spray travel. Hold both the **LH WHEEL & RH WHEEL** switches to the **DOWN** position, and at the same time **slowly move forwards** until done (a few seconds).

7. **Spray mode:** Set the **BOOM WHEELS** switch to **SPRAY** position. This will allow the boom wheels to float when turning. Go spraying.

**TO FOLD THE WEEDit BOOM >>>** All folding operations should be on flat ground

1. **Lock the wheels** (facing direction of travel). Set the **BOOM WHEEL** switch to **LOCK**.
2. **Unlock the arms.** Move the **LATCH ARMS** switch **UP** to UNLOCK.
3. **Drive forwards slowly below 5 KM/H.** While moving forward, hold both the **LH WHEEL & RH WHEEL** switches **UP**, this will move the wheels into the transport position (in line with the boom). Travel forwards slowly until both booms are trailed behind the sprayer.
4. **Fold in both stay arms.** Hold the **FOLD ARM** switch to the **IN** position until both sides are fully retracted. Only fold the arms in when the booms are fully folded together to avoid damage to mudguards.
5. **Set up the machine for safe transport** (also see Transport, unloading & setup guide). Remain in "Lock".

BT-OMWEED-QSG-B

WEEDit Boom Parking: Quick Start Guide (v3)

Page 2 of 2

## NOTE

**Never operate the boom when the wheels are at right angles to the direction of travel.**

## NOTE

**Be very careful to follow the (manual) instructions for setting up the boom stay arms (it's a little counter intuitive and easy to get wrong if not following instructions).**

**Before operating, please read the Boom Parking Quick Start Guide, BT-OMWEED-QSG-B (version 3), as shown here.**

Carry out the set up and pre-delivery of the machine using the supplied manuals for the WEEDit system and blanket spray line (if equipped) using the supplied manuals.

## **CROPLANDS**

### **AUSTRALIA**

Croplands Equipment Pty Ltd  
ACN 006 450 184

PO Box 2441  
Dry Creek  
50 Cavan Road  
Dry Creek SA 5094  
Australia

Freecall: 1800 999 162  
Freefax: 1800 623 778  
Email: [sales@croplands.com.au](mailto:sales@croplands.com.au)  
Website: [www.croplands.com.au](http://www.croplands.com.au)

### **NEW ZEALAND**

Croplands Equipment Ltd  
PO Box 2004,  
Stortford Bridge, Hastings 4120

Location:  
1422 Omaha Road,  
Hastings 4120  
New Zealand

Freecall: 0800 106 898  
Freefax: 0800 117 711  
Email: [sales@croplands.co.nz](mailto:sales@croplands.co.nz)  
Website: [www.croplands.co.nz](http://www.croplands.co.nz)

### **CANADA**

Croplands Equipment Pty Ltd  
PO Box 2441  
Dry Creek, SA 5094  
Australia

Phone +1403-831-3913  
Email address:  
[sales@croplandsequipment.com](mailto:sales@croplandsequipment.com)  
[www.croplands.com.au](http://www.croplands.com.au)

Your nearest Croplands Dealer  
can be found in the dealer section  
on the Croplands website