

CROPLANDS

OPERATORS MANUAL FIREFIGHTER

MODELS:

BT1500/FF | BT1100/FF

US500/FF1

WWW.CROPLANDS.COM.AU



GP-OMFIRE-B

INTRODUCTION

GENERAL MANAGER'S WELCOME



A handwritten signature in black ink, which appears to read 'Sean Mulvaney'.

Sean Mulvaney
General Manager

Dear Customer

Congratulations on the purchase of your new Croplands Sprayer. Croplands have been in the business of building sprayer equipment since 1972. For over 50 years we have been supplying sprayers to farmers, contractors, growers and all our customers involved in growing crops and in the control of pests and diseases.

Croplands is a wholly owned subsidiary of Nufarm Ltd, the largest supplier of crop protection chemicals for Australasia, and one of the fastest growing global suppliers world-wide.

At Croplands, we pride ourselves on our commitment to supplying machinery that is at the forefront of the industry's needs. We believe we can back up our products and through

constant research and development, bring to you the best equipment you can find.

We welcome any feedback from you about our equipment.

On the back cover you will find our contact details, and locations where our staff can be reached during business hours. After hours, you can email us and expect a reply the following morning.

Please read this manual in its entirety before you operate your Firefighter. This will ensure you have a trouble free start up.

We trust you will get years of good use from your Croplands Sprayer.

Yours Sincerely

Sean Mulvaney
General Manager

Croplands has taken steps to ensure this operator's manual is as current and as accurate as possible. Due to the ever-changing markets of cropping and farming, Croplands is constantly striving to be at the forefront of innovation and technology. While the information in this manual is considered accurate at the time of writing, Croplands reserves the right to change this information without notice. Croplands will not accept liability for any inaccuracy in this publication, or changes forthwith.

CONTENTS

SECTION 1 **IMPORTANT INFORMATION**

Foreword	4
About this manual	4
Terminology	4
Warranty Policy	5

SECTION 2 **SAFETY**

Safety signs and decals	6
-------------------------	---

SECTION 3 **PRODUCT IDENTIFICATION & SPECIFICATION**

Trailed Firefighters	7
Traymount Firefighters	8
BT1500 dimensions	9
US500 dimensions	9
Croplands Firefighter	10
Tanks	10
Onga Blazemaster pump	10
Pump & Motor manuals	11
Hose Reel & Nozzle	11
Chassis (1100 & 1500)	11
Chassis (500)	11
Fire Safety Range Firefighters	12

SECTION 4A **FAMILIARISATION - TRAILED 1100 & 1500** **VERSIONS**

Safety First	14
Storage	14
Connect to Vehicle Hitch	14
Filling	15
To Spray	15

SECTION 4B **FAMILIARISATION - TRAYMOUNT VERSIONS**

Safety First	16
Storage	16
Loading / Unloading	16
Fitment	16
Filling	16
To Spray	17

SECTION 4C **FAMILIARISATION - GENERAL**

Draining - 1100 & 1500 Models	18
Draining - Traymount Models	18
Hose Reel Lock	18
Hose Nozzle	19
Onga Pump & Honda Motor	19

SECTION 5 **PRE-OPERATION**

Pre-Operation Check-List	20
First Time Start-Up	20
Shut Down	21

SECTION 6 **OPERATION**

Safety First	22
Fire Fighting	22
Pre-Operation Checklist	22
Fill the Tank	22
Start The Motorised Pump - Spray	22

SECTION 7 **MAINTENANCE & TROUBLESHOOTING**

Pump Care	23
General Sprayer Care	23
General Maintenance (Trailed)	23
Troubleshooting Pump Problems	23

SECTION 8 **ASSEMBLY DRAWINGS**

24

SECTION 9 **INDEX**

28

NOTES

29

SECTION 1

IMPORTANT INFORMATION

FOREWORD

Croplands Equipment is a subsidiary of Nufarm Australia Ltd and operates as Croplands Equipment Pty Ltd in Australia and Croplands Equipment Ltd in New Zealand. Croplands are a leading manufacturer and supplier of spraying equipment.

This operator's manual covers the Croplands' range of Firefighters.

Manufactured to a high standard for use in Agriculture and Horticulture, every effort has been made to include all information needed for the correct use of your Firefighter.

ABOUT THIS MANUAL

This manual provides assembly, setting up, operating and maintenance instructions for the Firefighter. All models of the Firefighter are in the Identification and/or in the Specification Chapter.

Some model types also have different options available. Some features explained in this manual may not be applicable to your model.

Please pass on this manual with the sprayer or boom at the time of resale for use by the new owner.

This manual, Firefighter, was published in May 2023. Check online as there may be more recent revisions of this manual.

As the owner of a Croplands product, please read this manual thoroughly to fully familiarise yourself with all aspects of the safe and correct operation of your Firefighter.

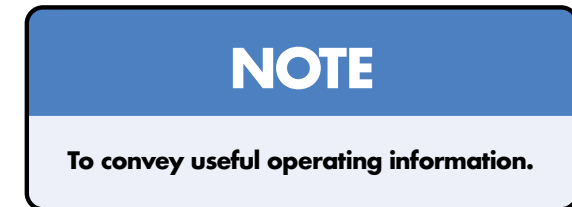


unit. Maintenance information and useful tips have been included. We trust you will use these tips to get the best from your Firefighter.

TERMINOLOGY

These terms/symbols used throughout this manual:

NOTE	This Note sign is in place to convey useful information and will help you to identify the best possible way to operate the machine.
CAUTION	This Caution sign shows the potential for incident. An incident may include damage to the machine itself, or possible injury to the operator.
WARNING	This Warning sign shows the potential for risk or injury and highlights the need for steps to be taken to protect ones safety.
DANGER	This Danger sign will be used in areas where the highest risk is present. Always read the information on these signs and ensure you are taking steps to prevent risk or injury.



SECTION 1

IMPORTANT INFORMATION

WARRANTY POLICY

Refer to your Croplands Warranty and Pre-delivery Booklet supplied with your Firefighter unit. Always make contact with your Croplands Dealer first and foremost for warranty matters.

NOTE

For full conditions of warranty and warranty policy, please see the Specification, Safety, Warranty & Delivery booklet provided with this sprayer.

CROPLANDS

WARRANTY & PRE-DELIVERY UTILITY SPRAYERS

WWW.CROPLANDS.COM.AU

STOP

BEFORE COMMENCING operation, **ENSURE** you read & understand this manual, its contents, and any additional information supplied.



GP-WARO-A

SECTION 2

SAFETY

The supplied (as a separate document along with this sprayer) Croplands SAFETY manual must be read and understood before operating your TrayPak Sprayer.



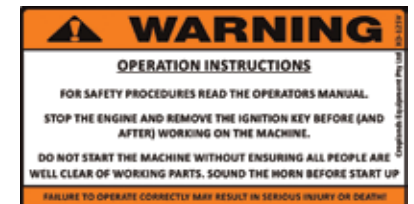
SAFETY SIGNS AND DECALS

All signs and decals for sprayer safety and operation must be maintained in good order and replaced if damaged or missing. Most Croplands labels have a part number printed on the decal to aid identification and replacement.

Some examples are shown below.



Part No: XD - 123



Part No: XD - 125V



Part No: XD - 126V



Part No: XD - 175



Part No: XD - 176

SECTION 3

PRODUCT IDENTIFICATION & SPECIFICATION

Specifications are subject to change without prior notification.

TRAILED FIREFIGHTERS



UNIT	WIDTH	LENGTH	HEIGHT	WEIGHT
BT1100/FF	1951 mm	3263mm	1583mm	N/A
BT1500/FF	1960mm	3258mm	1857mm	N/A

BT1100/FF	Trailed 1100L firefighter with sprung axle, galvanised chassis, eye-hitch, ag-tyres, SHUB55H pump, heavy-duty steel hose reel with 30m of 20mm delivery hose, adjustable nozzle and 3m suction kit with filter. Ideal for farm use (not pictured)
BT1500/FF	Trailed 1500L firefighter with sprung axle, galvanised chassis, eye-hitch, ag-tyres, SHUB55H pump, heavy-duty steel hose reel with 30m of 20mm delivery hose, adjustable nozzle and 3m suction kit with filter. Ideal for farm use (not pictured)

Please note trailed Firefighter units are not legal for road use.

POWERED by
HONDA™

SECTION 3

PRODUCT IDENTIFICATION & SPECIFICATION

Specifications are subject to change without prior notification.

TRAYMOUNT FIREFIGHTERS



UNIT	WIDTH	LENGTH	HEIGHT	WEIGHT
US500/FF1	1200mm	1659mm	1043mm	N/A
BT500/FF1	Traymount 500L firefighter. Galvanised frame, SHUB55H pump, heavy-duty steel hose reel with 30m of 20mm delivery hose, adjustable nozzle and 3m suction kit with filter			

Disclaimer: dimensional and weight information supplied is for base model only with no options. This information is subject to change without notice.

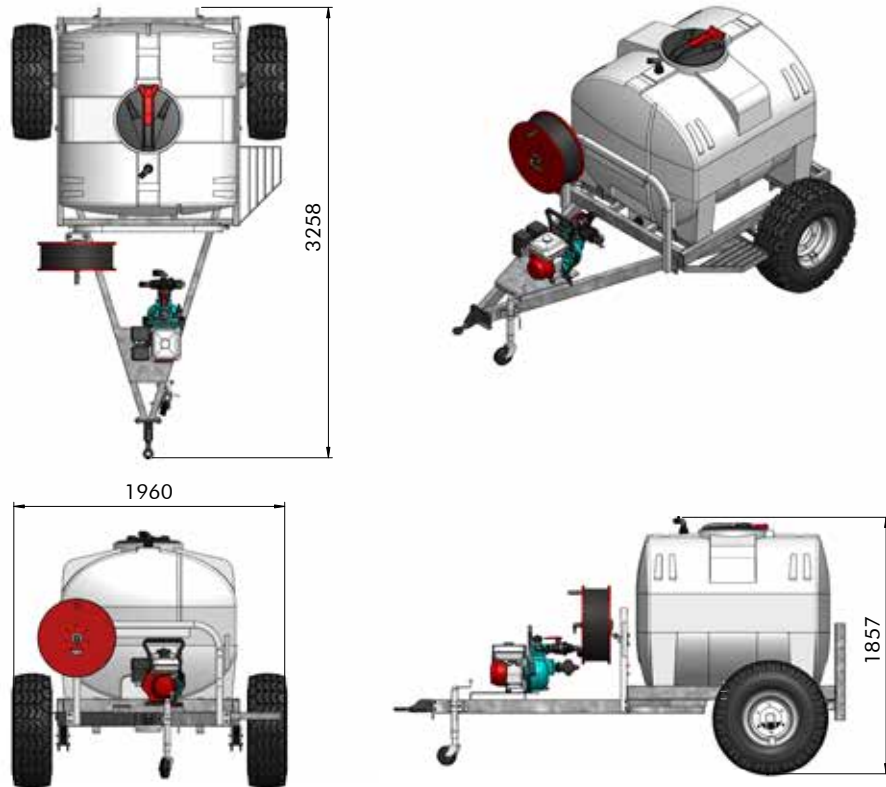
POWERED by
HONDA™

SECTION 3

PRODUCT IDENTIFICATION, SHIPPING & SPECIFICATION

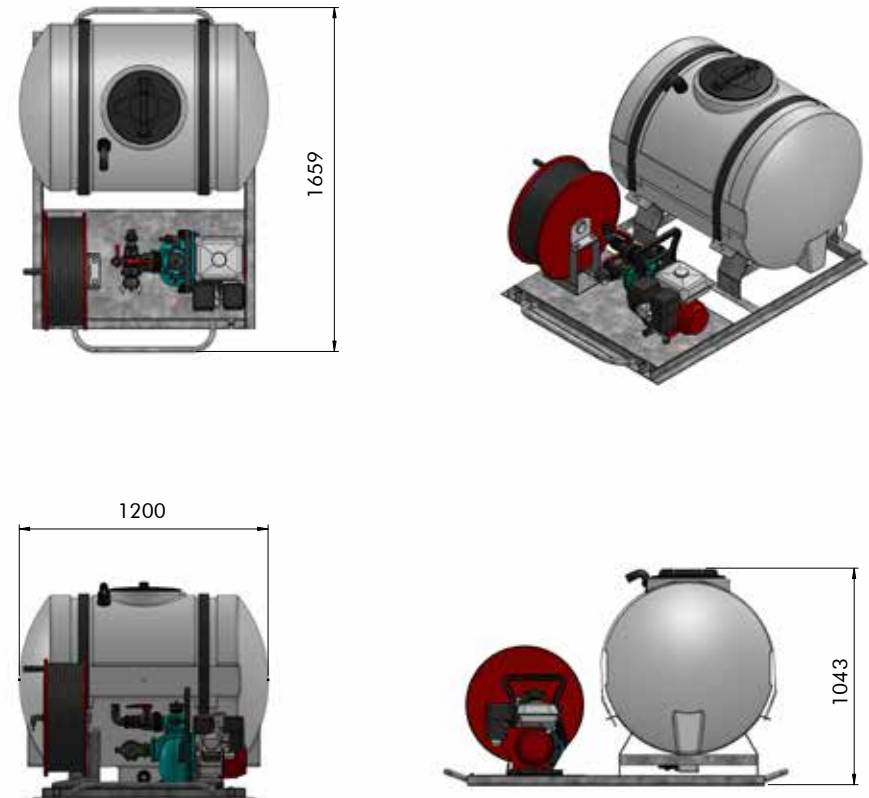
Specifications are subject to change without prior notification.

BT1500 DIMENSIONS



BT1100_FF dimensions = 1951W x 3263L x 1583H

US500 DIMENSIONS



SECTION 3

PRODUCT IDENTIFICATION & SPECIFICATION

Specifications are subject to change without prior notification.

CROPLANDS FIREFIGHTER

Whenever possible, use the serial number of the Firefighter when requesting service or parts information.

Where a serial plate is not provided or is no longer on the unit, use the part number from the bar code affixed to this manual or the Warranty & Pre-delivery booklet.



TANKS

The Croplands Firefighter range of tanks are constructed from UV stabilised, medium density polyethylene (PE) for low distortion qualities and impact resistance. A screw down main lid is installed on all models and comes standard with a basket strainer. A deep sump provides excellent suction and allows the tank to completely drain.

All models feature easy to read, calibrated, tank level markings. The water level is visible through the translucent (natural PE) colour.



ONGA BLAZEMASTER PUMP



Each unit is fitted with (part no. SHUB55H) ONGA BLAZEMASTER B55H, Honda GX160 powered, (centrifugal) PUMP.

Specifically designed for Firefighting applications.

Each unit is affixed with an identification label showing the manufacturer, model, serial number and manufacturing codes. For further information on parts etc, refer to the parts section on the Croplands website.



Honda Power

Croplands Firefighter models use genuine Honda petrol powered motors - famous for delivering reliable, easy starting, fuel efficient performance, day in and day out.

SECTION 3

PRODUCT IDENTIFICATION & SPECIFICATION

Specifications are subject to change without prior notification.

PUMP & MOTOR MANUALS

Separate manuals for the motor/pumps are supplied along with the unit.



HOSE REEL & NOZZLE

All units come equipped with 30 metres of 20mm delivery hose fitted with a brass adjustable nozzle.



Each hose reel is fitted with a lock to prevent unreeling whilst traveling.

CHASSIS (1100 & 1500)

Hot dipped galvanised heavy duty chassis with tow eye hitch for ready hook-up to suitable vehicles.

Suspension axle, 6 stud

Wheel / tyre combo, AWT 11.5/80-15.3

Heavy duty (1000kg) jockey wheel.

CHASSIS (500)

Hot dipped galvanised heavy duty skid / traymount chassis for mounting to suitable vehicles. Front and rear steel tube handles for improved (dry) handling.

FIRE SAFETY RANGE FIREFIGHTERS

Don't take risks with your property - gear up for the fire season with a Croplands firefighter in either a truck/traymount or trailed option.



BT1500/FF2

Heavy-duty 1500L trailed firefighter on galvanised chassis – hook up and go at a moment's notice when the need arises



US500/FF1

500L traymount firefighter on galvanised steel skid



SHUMB25LK

MiniBlaze firefighter kit with 2.5HP petrol motor. Quick-fill priming port and 1" discharge. Plus 5m of 20mm hose with nozzle



**SHUB55H
FIREFIGHTER PUMP**

Honda-powered Onga pumps provide effortless starts in all weather and conditions and rapid movement of water volume

SECTION 4

FAMILIARISATION

4A - TRAILED 1100 & 1500 VERSIONS

SAFETY FIRST	14
STORAGE	14
CONNECT TO VEHICLE HITCH	14
FILLING	15
TO SPRAY	15

4B - TRAYMOUNT VERSIONS

SAFETY FIRST	16
STORAGE	16
LOADING / UNLOADING	16
FITMENT	16
FILLING	16
TO SPRAY	17

4C - GENERAL

DRAINING - 1100 & 1500 MODELS	18
DRAINING - TRAYMOUNT MODELS	18
HOSE REEL LOCK	18
HOSE NOZZLE	19
ONGA PUMP & HONDA MOTOR	19

SECTION 4A

FAMILIARISATION - TRAILED 1100 & 1500 VERSIONS

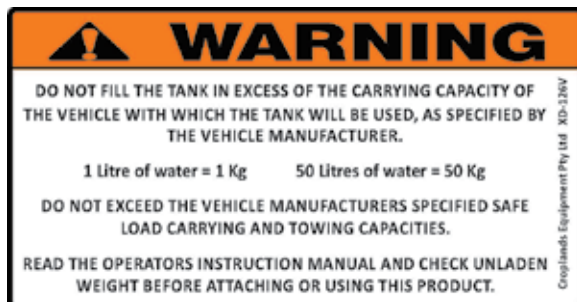


From arrival on farm, hook up and prepare the firefighter for operation.

SAFETY FIRST

Before progressing further,

- Read and understand the Safety Manual (part no. GP-SAFE-A) supplied with this sprayer.
- Read and understand this manual to better familiarise yourself with the unit.
- Ensure the vehicle (tractor ?) to be used to tow this unit is suitable to handle the loads. If in doubt consult the vehicle dealer/manual.



STORAGE

Always park the sprayer in a horizontal position and on firm, level ground. Use wheel chock's if required.

Best to set the jockey stand / hitch height to the most likely vehicle to be used with the unit.



CONNECT TO VEHICLE HITCH

1. Confirm suitability of the vehicle to tow the unit.
If the unit's hitch is higher or lower than the tractor drawbar, adjust the height of the hitch or Jockey wheel to match the tractor drawbar height.
Proper connection will vary from vehicle to vehicle.

2. Once the hitch pin is place, and the unit is safely connected to the vehicle, raise the jack until the jack's wheel is raised off the ground.

Release the spring loaded lock pin and rotate the hitch jack until it locks into the horizontal transport position.



SECTION 4A

FAMILIARISATION - TRAILED 1100 & 1500 VERSIONS

FILLING

Filling can be accomplished by one of 2 methods.

1. Via hose direct to the open tank lid - leaving the filter basket in place will reduce the risk of filling with foreign particles.
2. Via a water source such as a dam. Each unit is supplied with a 3m suction hose fitted with a camlock fitting (A) (almost out of sight) which connects to the pump at (B). At the water source end is a brass filter fitted with an internal clapper valve to prevent siphon back.

As shown below the suction ball valve is in the off position. To fill a tank from the water source the ball valve handle need to be pointing to the source connection (B).

Pump suction via centrifugal pumps leads to pressure side of the pump at D & E. As shown below, valve D is in the off position. E (to the hose reel F), is always live / can always spray.

To fill the tank, turn the ball valve handle clockwise to position D / **blue arrow.**

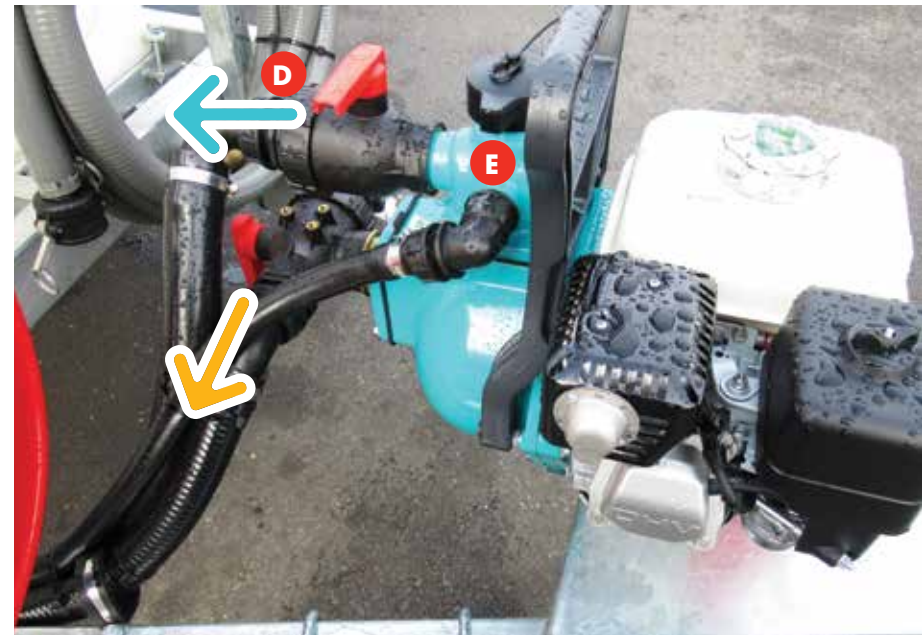
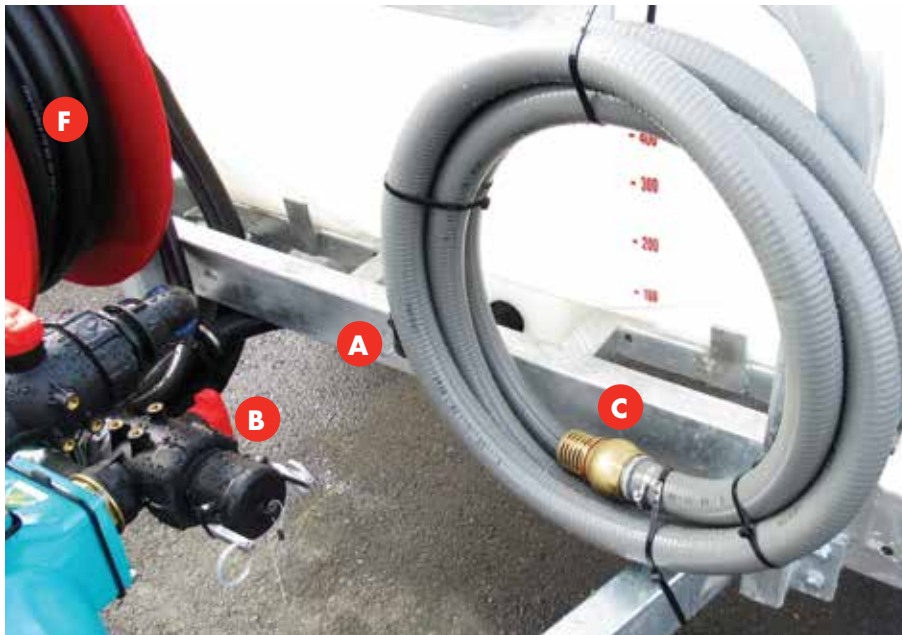
Filling requires the pump to be running and hose end (C) to be in water.

TO SPRAY

At all times the pump is running, the hose reel is active, although it's best if the pressure ball valve (D) is off (as pictured) below.

- **To spray water from the main tank,** the suction ball valve (B) needs to point to the hose side (away from the fill camlock), in the direction of the **yellow arrow below** (note in both images below, the ball valve is in the off position - handle pointing down).

Also refer to Traymount version images.



SECTION 4B

FAMILIARISATION - TRAYMOUNT VERSIONS



From arrival on farm, hook up and prepare the firefighter for operation.

SAFETY FIRST

Before progressing further,

- Read and understand the Safety Manual (part no. GP-SAFE-A) supplied with this sprayer.
- Read and understand this manual to better familiarise yourself with the unit.
- Ensure the vehicle (often a tray top ute) to be used to carry this unit is suitable to handle the loads. If in doubt consult the vehicle dealer/manual.

STORAGE

Always store the unit in a horizontal position on solid support, off of the ground. Ideally stored at a height ready to be slid onto the vehicle's tray.

LOADING / UNLOADING

Take care when loading / unloading this unit. This unit is well past the capacity for one or two people to manually lift.

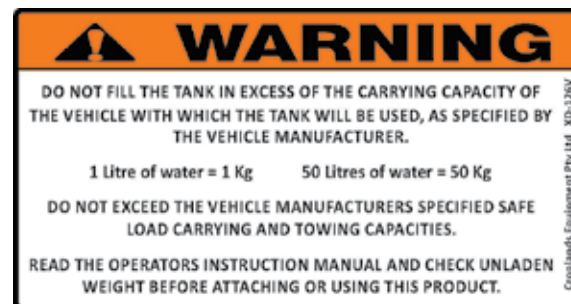
The end "handles" are suitable for sling pickup points. Be careful of the balance. All loading / unloading should be done with tanks empty. Also refer to Section 5 of the Safety manual.

FITMENT

Make sure the unit is securely fastened. In many cases this will involve bolting the unit to the vehicle.

Remember to factor in the weight of a full tank when determining the mounting, and always consult the vehicles manual for load ratings and suitable mounting points.

If in doubt consult a local engineer.



FILLING

Filling can be accomplished by one of 2 methods.

1. Via hose direct to the open tank lid - leaving the filter basket in place will reduce the risk of filling with foreign particles.



2. Via a water source such as a dam.

Each unit is supplied with a 3m suction hose fitted with a camlock fitting which connects to the pump (pictured next page), and at the water source end is a brass filter fitted with an internal clapper valve to prevent siphon back (image below).



SECTION 4B

FAMILIARISATION - TRAYMOUNT VERSIONS

To fill the tank, connect the suction hose via camlock to the suction valve (G).

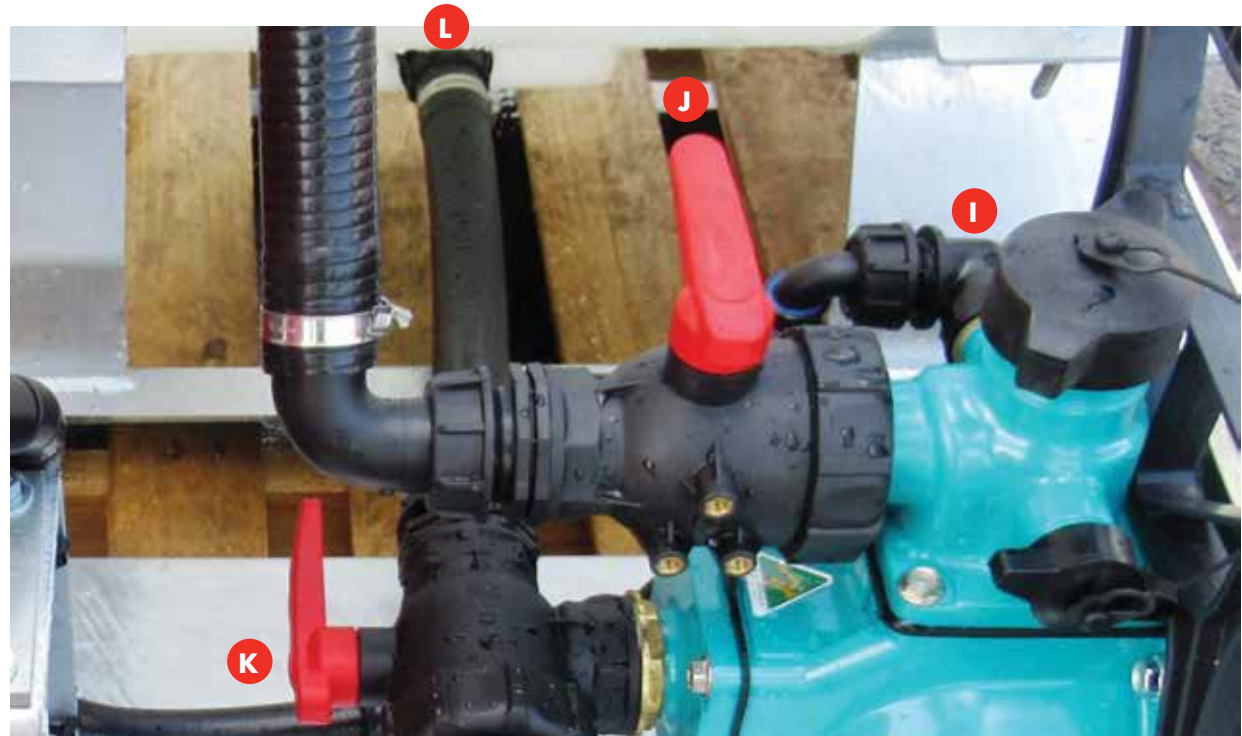
- Turn the suction ball valve handle clockwise to position shown (G), pointing towards the source.
- Turn the pressure ball valve handle to be pointing to the tank fill line (H).
- Filling requires the pump to be running and the clapper valve end of the suction hose needs to be in / below water level.



TO SPRAY

At all times the pump is running, the hose reel connection to the pump (i) is active, although it's best if the pressure ball valve is in the off position as shown (J) below.

To spray water from the main tank, the suction ball valve (K) needs to point to the hose from the tank sump (L), and water feed to the pump is as per (J) and (K) above.



SECTION 4C

FAMILIARISATION - GENERAL

DRAINING - 1100 & 1500 MODELS

A Pull Drain Valve is positioned at the base of the sump (blue arrow) for simple, fast and complete drainage.



DRAINING - TRAYMOUNT MODELS

As most customers will leave the unit full of water, ready to fight a fire, there is no provision for a separate drain function.

There are 2 ways to drain the tanks for the Traymount models.

1. spray out the total content of the tank,
2. disconnect the hose from the "suction" ball valve and allow the tank to run dry.



HOSE REEL LOCK

Each hose reel is equipped with a sprung loaded locking pin to prevent the reel from unrolling whilst traveling.



SECTION 4C

FAMILIARISATION - GENERAL

HOSE NOZZLE

Each firefighting hose is equipped with a robust spray nozzle. The nozzle is adjustable from a long distance jet to a fine mist and to off.



Rotate the nozzle fully clockwise to close and fully anti-clockwise to open for full jet.

Nozzle is available as spare part code; FQN34.



ONGA PUMP & HONDA MOTOR

Refer to the separate manuals for the ONGA BLAZEMASTER B55H, Honda GX160 powered, (centrifugal) PUMP.



Refer to sections 5 & 6 for pre-operation & operation.

NOTE

Never run the pump dry for any length of time, and do not run for too long without the nozzle discharging as this will cause water in the pump to get dangerously hot and will damage the pump seal

SECTION 5

PRE-OPERATION

PRE-OPERATION CHECK-LIST

Before operating the sprayer:

- Familiarise yourself with all supplied manuals, including ...
- Safety Manual ... has been read, understood and appropriate preparations have been implemented.
- Trailed Models; Check for secure wheels (270Nm) and correct tyre pressures (40 psi). Check for correct hitching and stowed jockey wheel.

⚠ WARNING	Never operate your sprayer with a loose rim, wheel or axle.
ENSURE ALL WHEEL NUTS ARE TIGHT BEFORE USE.	Anytime wheel nuts are loosened, retighten to specified torque.
Failure to do so may result in a serious accident.	CROPLANDS <small>ID-175</small>

- Traymount Models; check the unit is securely mounted. Check the load carrying capacity and condition of the host vehicle, including tyre pressures (refer to p.14 and the vehicle's manual).
- Check that the tank is clean, and drain is not open.
- Check the hose reel / nozzle are correctly fitted, locking pin functional and all in good condition.
- Check all plumbing and fittings are tight and not damaged. Fill the tank with clean water - making sure the basket filter is in place when filling. Check for leaks.
- Check pump operation

FIRST TIME START-UP

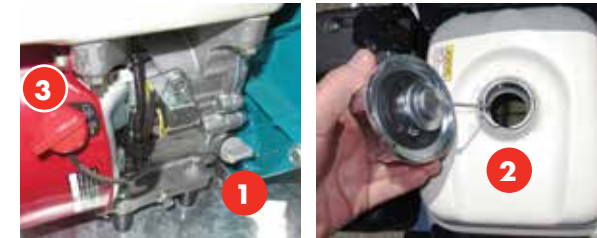
The engine and pump etc will have been pre-checked for operation at the factory.

However, it's recommended the unit be checked upon delivery and at regular intervals to assure operators are trained and the unit is ready to use at any time.

In conjunction with the Honda manual, familiarize yourself with the engine requirements and controls;

1. Check the oil level, correct
2. Check for / add adequate fuel
3. Check the ignition switch, on

4. Check for fuel on, on
5. Check the choke, on (cold starts only)
6. Check the engine speed controls (slow)
7. Check the starter pull-cord



SECTION 5

PRE-OPERATION

- Fill the sprayer with some clean water (50 litres would be sufficient for initial familiarisation).
- Set the suction valve to “tank” (**purple arrow**), and pressure valve to the “bypass” return (**yellow arrow**). Remember the reel is always active, albeit at lesser pressure when in the bypass position. Turn the spray nozzle to reduced flow.

Refer to valve positions in image below.



Start the motor

- Turn on the Honda's ignition (3).
- Set the fuel to on (4)
- Set choke (5) to on. Note hot starts don't require the choke.
- Set run speed to minimum (6 / turtle)
- Pull Start (7), usually 2 times is sufficient.
 - If not starting after 4 or 5 pulls, turn off the choke and set the throttle to full power. Will usually start first time. If all else fails, consult the Honda manual.
- As the engine warms up the choke can be reduced / power increased. Once the engine is running reliably at approximately ¼ power
- Check that the pump is operating the bypass line will be feeding back to tank and the spray nozzle will have low pressure spray available.



Correct starting positions.

- The final task is to make the sprayer fire ready. Turn the bypass valve to off. This will ensure that 100% of the pump's performance will be available to the spray hose / nozzle.



SHUT DOWN

- Reduce engine power to idle.
- Turn off the engine by using the ignition kill switch.
- Relieve any residual pressure in the spray line. Do not leave hoses full of water and with the nozzles closed in the heat of summer or the cold of winter.

With the initial start-up procedure successfully completed, the sprayer is now ready for operation.

Go to section 6, Operation

SECTION 6

OPERATION

SAFETY FIRST

As Firefighter units are likely to be called upon in emergency situations it's imperative that;

- All operators receive regular hands on / practical training prior to needing to use the unit.
- All operators undergo safety training.
- Read and understand the Safety Manual (part no. GP-SAFE-A) supplied with this sprayer.
- Read and understand this manual to better familiarise yourself with the sprayer.

FIRE FIGHTING

The use of this unit (for fire fighting) is the sole responsibility of the owner / operator.

If required, consult your local fire fighting brigades etc for training on how to best use this unit for fire fighting.



PRE-OPERATION CHECK-LIST

refer page 19

Most importantly ... ensure the unit is securely mounted / hitched.

- Trailed Models; Check the wheels & tyres are in good order, the unit is securely hitched and stowed jockey wheel.
- Traymount Models; check the unit is securely mounted.

FILL THE TANK

refer pages 16 & 17

Via Lid or "dam fill" suction hose. Direct fill via the lid is preferred as it's faster and leaves the unit mobile.



START THE MOTORISED PUMP - SPRAY

refer previous page

- Start the motor
- Set the ball valves to correct position
- Unlock the hose reel

- Adjust motor power as required (full speed ?)
- Adjust nozzle to required spray pattern.



SECTION 7

MAINTENANCE & TROUBLESHOOTING

PUMP CARE

Run the motor and pump every month to maintain seals, and ensure it operates when required.

Never run the pump dry for any length of time, and do not run for too long without the nozzle discharging as this will cause water in the pump to get dangerously hot and will damage the pump seal.

GENERAL SPRAYER CARE

- Where possible store the unit out of the sun to avoid UV damage
- Check all mounting bolts for tightness annually
- Check all taps and the nozzle regularly
- Check all hoses & seals before the fire season - lubricate o-rings or seals from time to time as required
- Check the Honda motor oil level and air-cleaner regularly
- Test the unit before each season
- Replace any faulty parts immediately

During the fire season, keep the unit full of water, ready to go. Ensure the motor is fully fueled at all times. At all other times, drain the unit for storage.

Use clean water during operation - or at least as clean as possible.

Keep instruction booklets handy to the unit.

When fire season has finished, clean the machine completely.

- For winter storage, if freezing conditions are expected, empty pump completely and flush with a mixture of water and antifreeze to prevent unrepairable damage to your unit.

GENERAL MAINTENANCE (TRAILED)

At least once a season.

- Grease the tow hitch
- Grease the wheel hubs
- Grease Jockey wheel moving parts

NOTE

Also refer to your Honda Manual supplied with your sprayer for engine maintenance.

TROUBLESHOOTING PUMP & MOTOR PROBLEMS

Consult the ONGA Blazemaster and Honda manual for relevant maintenance and troubleshooting issues.



SECTION 8

ASSEMBLY DRAWINGS

ALL PARTS INFORMATION is now listed on the Croplands website:

- Go to croplands.com.au
- Search in the Parts Information section linked to the home page.

NOTE

Drawings are for illustration purpose only - refer to sprayer for actual plumbing. Parts listed are indicative of the sprayer type.
Items in italics or without a part number are non stocked items and may need to be specially ordered.
For further parts information refer to: www.croplands.com.au

NOTE

Contact Croplands Technical Support for further information:
1300 650 724

BT1500/FF ASSEMBLY	25
US500/FF1 ASSEMBLY	26
L-R0230 HOSE REEL ASSY	27

SECTION 8

ASSEMBLY DRAWINGS

BT1500/FF ASSEMBLY

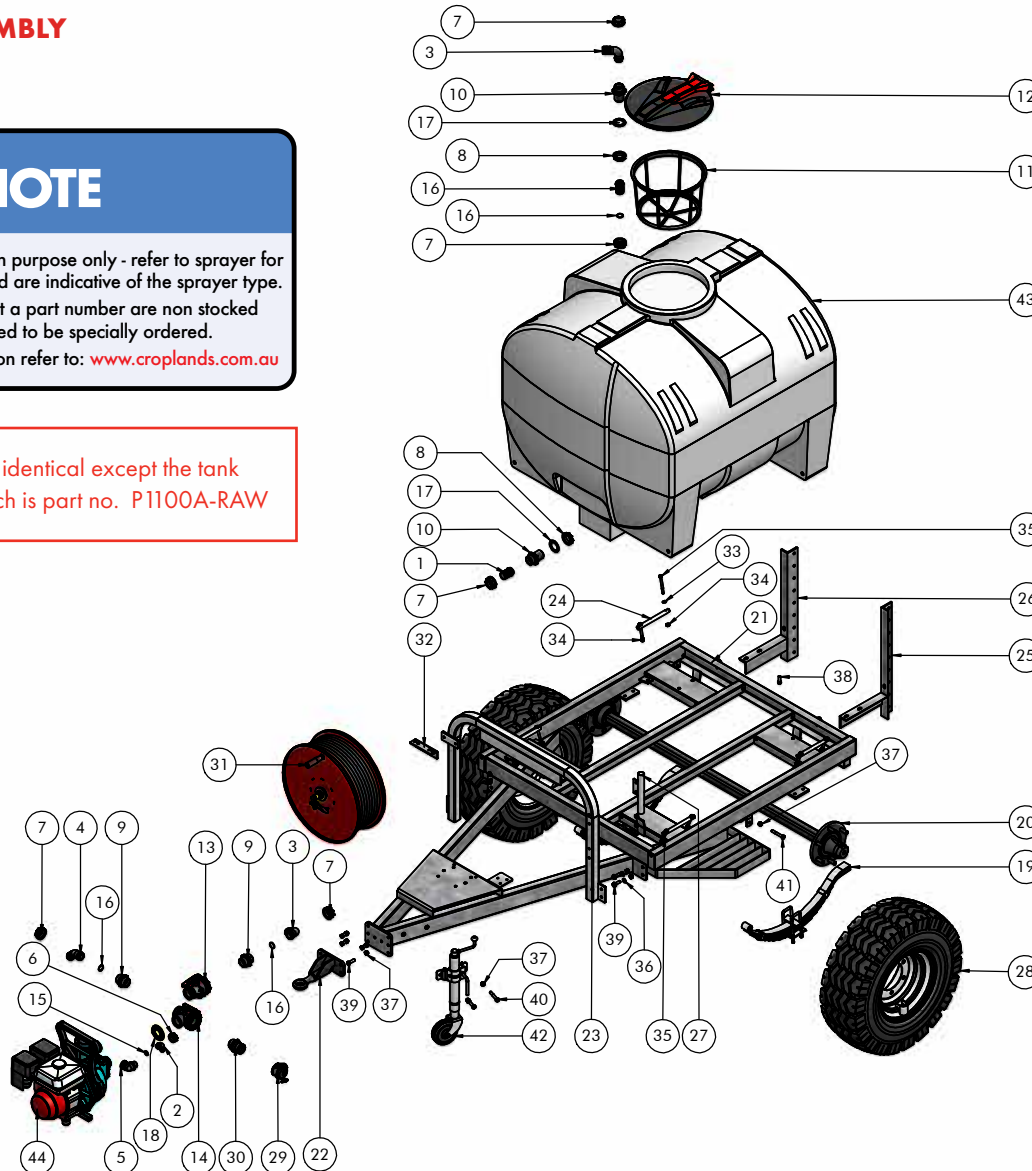
NOTE

Drawings are for illustration purpose only - refer to sprayer for actual plumbing. Parts listed are indicative of the sprayer type.

Items in *italics* or without a part number are non stocked items and may need to be specially ordered.

For further parts information refer to: www.croplands.com.au

BT1100_FF model is identical except the tank (drawing ref 7), which is part no. P1100A-RAW

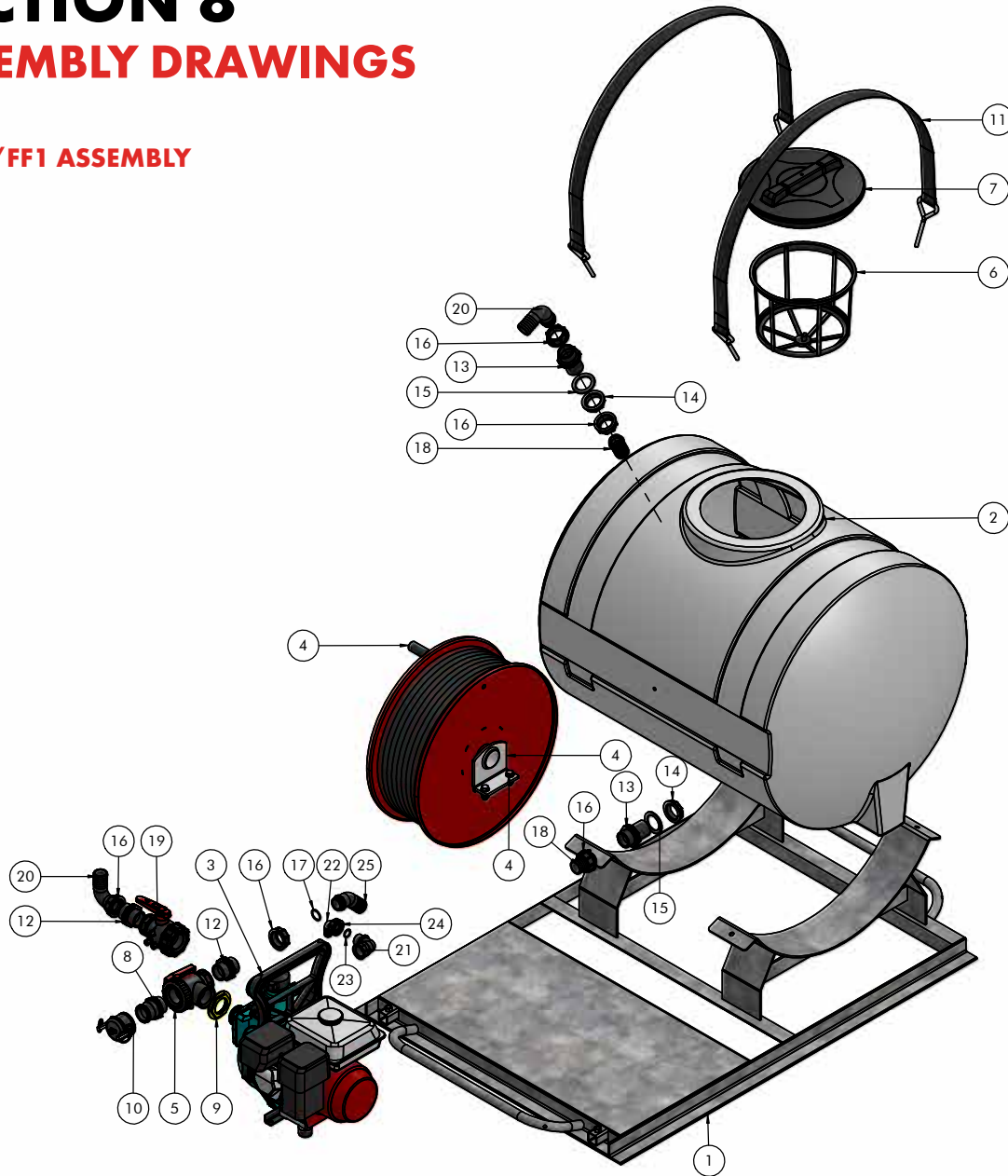


ITEM NO.	PART NUMBER	DESCRIPTION	QTY.
1	A106640	TAIL 1 1/2" TO 40MM	2
2	A116420	ELBOW 20MM	1
3	A116640	ELBOW 1 1/2"	2
4	A117640	ELBOW 1 1/2" X 1 1/2" 45 DEG	1
5	A1262044	ELBOW 1" X1" MALE/FEMALE	1
6	A200040	FLY NUT 1"	1
7	A200060	FLY NUT 1 1/2"	5
8	A205060	BACK NUT 1 1/2"	2
9	A250060	NIPPLE 1 1/2"	2
10	A250061	NIPPLE 1 1/2" LONG	2
11	A300130	FILTER BASKET LARGE 254MM DEEP	1
12	A356060	LID HINGE 455MM 180DEG	1
13	A454136	BALL VALVE 1 1/2" 2 WAY	1
14	A454236	BALL VALVE POLY 1 1/2" 3 WAY	1
15	AG10041	O RING 1"	1
16	AG10061	O RING 1 1/2"	4
17	AG40006	FLAT SEAL 1 1/2" EPDM	2
18	BBP112-NUT	NUT 1 1/2" BRASS	1
19	BP-193	SPRING SLIPPERS 9 LEAF (PAIR)	1
20	BP-509L	AXLE ASSEMBLY 50 X 50 X 1700 6STUD	1
21	BP-520B-1	CHASSIS PONY 1100	1
22	BP-520B-2	TOW HITCH ASSEMBLY TRAILPAK	1
23	BP-520B-3	VALVE BRACKET 1100LT PONY	1
24	BP-520B-4	TIE DOWN PIN 1100LT PONY	4
25	BP-520B-5L	BOOM BRACKET L.H. 1100LT PONY	1
26	BP-520B-5R	BOOM BRACKET R.H. 1100LT PONY	1
27	BP-520B-6	PROBE HOLDER BRACKET 1100LT PONY	1
28	HP-200	TYRE & WHEEL AWT 11.5/80-15.3	2
29	K-150-CAP	CAMLOCK 1 1/2" CAP "DC" POLY GL	1
30	K-150-F	CAMLOCK 1 1/2" MALE THREAD "F"	1
31	L-R0230	REEL 100MTR 3/4" AB138	1
32	LP-135	HOSE REEL BRKT 50X50X160 ANGLE	1
33	M10FWASHER	M10 FLAT WASHER ZP	12
34	M10NNUT	M10 NYLOC NUT HT ZP	12
35	M10X100BOLT	M10 X 100 BOLT HT ZP	8
36	M12FWASHER	M12 FLAT WASHER ZP	20
37	M12NNUT	M12 NYLOC NUT HT ZP	18
38	M12X35	M12 X 35 SET SCREW HT ZP	6
39	M12X40	M12 X 40 HEX HEAD SET SCREW HT ZP	8
40	M12X75BOLT	M12 X 75 BOLT HT ZP	2
41	M12X80BOLT	M12 X 80 BOLT HT ZP	2
42	MUJOCKEY	JOCKEY WHEEL	1
43	P1500A-RAW	TANK 1500L C/W SUMP POLY RAW	1

SECTION 8

ASSEMBLY DRAWINGS

US500/FF1 ASSEMBLY



NOTE

Drawings are for illustration purpose only - refer to sprayer for actual plumbing. Parts listed are indicative of the sprayer type.

Items in *italics> or without a part number are non stocked items and may need to be specially ordered.*

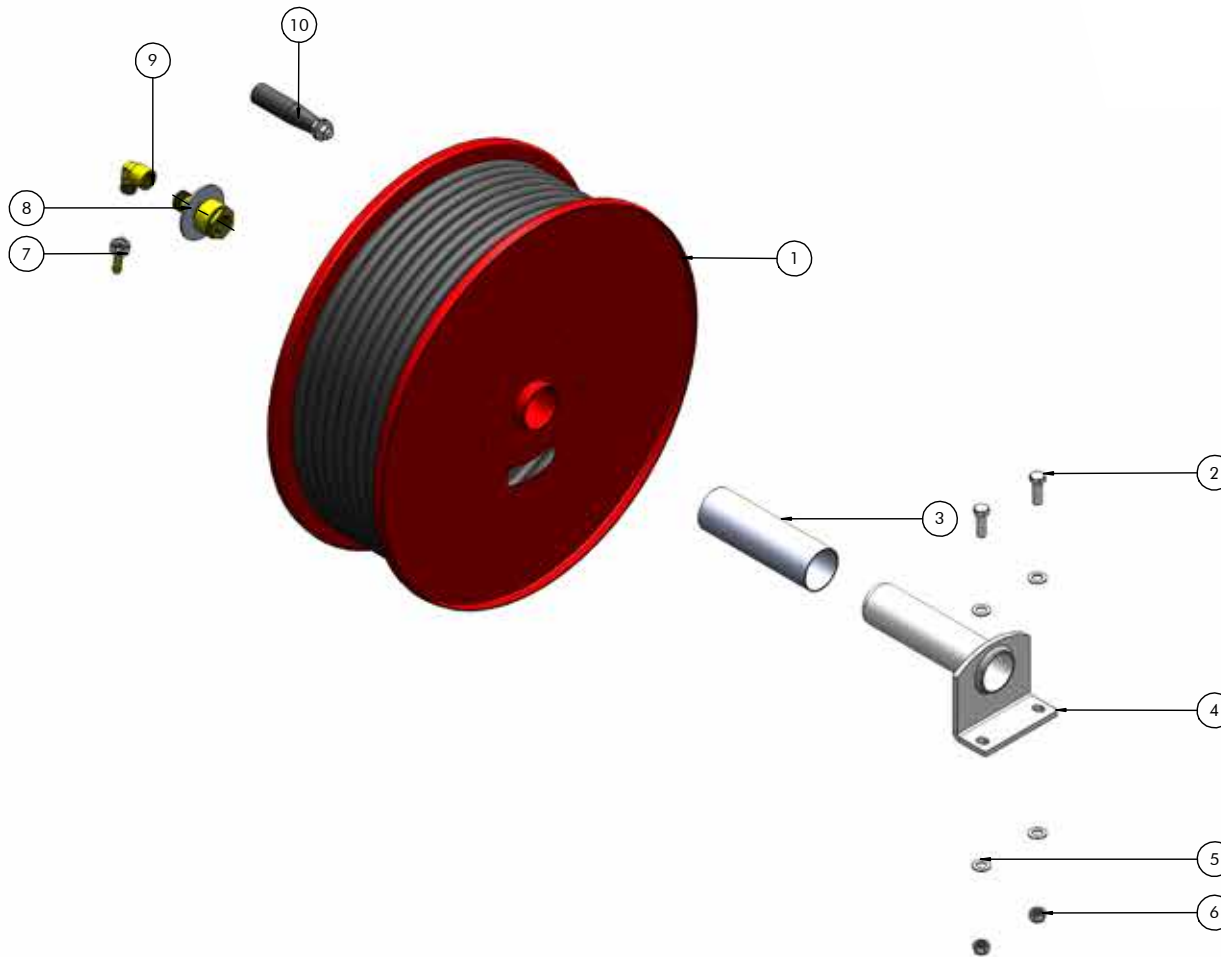
For further parts information refer to: www.croplands.com.au

ITEM NO.	PART NUMBER	DESCRIPTION	QTY.
1	BP-221BA	SKID CHASSIS 550LT	1
2	P600-RAW	TANK 550LT POLY RAW W/O FITTING	1
3	SHUB55H	ONGA FIREFIGHTER HONDA GX160HP	1
4	L-R0230	REEL 100MTR 3/4" AB138	1
5	A454236	BALL VALVE POLY 1 1/2" 3 WAY	1
6	A300120	FILTER BASKET MEDIUM 254MM DEEP	1
7	G8155000	LID/RING KIT 355MM	1
8	K-150-F	CAMLOCK 1 1/2" MALE THREAD "F"	1
9	BBP112-NUT	NUT 1 1/2" BRASS	1
10	K-150-CAP	CAMLOCK 1 1/2" CAP "DC" POLY GL	1
11	XTRAP1800	TANK STRAP 1800MM	2
12	A250060	NIPPLE 1 1/2"	2
13	A250061	NIPPLE 1 1/2" LONG	2
14	A205060	BACK NUT 1 1/2"	2
15	AG40006	FLAT SEAL 1 1/2" EPDM	2
16	A200060	FLY NUT 1 1/2"	5
17	AG10061	O RING 1 1/2"	5
18	A106640	TAIL 1 1/2" TO 40MM	2
19	A454136	BALL VALVE 1 1/2" 2 WAY	1
20	A116640	ELBOW 1 1/2"	2
21	A1262044	ELBOW 1" X1" MALE/FEMALE	1
22	A116420	ELBOW 20MM	1
23	AG10041	O RING 1"	1
24	A200040	FLY NUT 1"	1
25	A117640	ELBOW 1 1/2" X 1 1/2" 45 DEG	1

SECTION 8

ASSEMBLY DRAWINGS

L-R0230 HOSE REEL ASSY



NOTE

Drawings are for illustration purpose only - refer to sprayer for actual plumbing. Parts listed are indicative of the sprayer type.

Items in *italics* or without a part number are non stocked items and may need to be specially ordered.

For further parts information refer to: www.croplands.com.au

ITEM NO.	PART NUMBER	DESCRIPTION	QTY.
1	AB138	DRUM 100M	1
2	M12X35	M12 X 35 SET SCREW HT ZP	2
3	AB10105	POLYETHYLENE SLEEVE	1
4	AB13801	MACHINE MOUNT CENTRE 100M	1
5	M12FWASHER	M12 FLAT WASHER ZP	4
6	M12NNUT	M12 NYLOC NUT HT ZP	2
7	B163.604.2	HOSETAIL 10MM C/W 1/2" WINGED	1
8	AB158	SWIVEL KIT ASSEMBLY 3/4" BSP MALE	1
9	TFEL1212MF	ELBOW 1/2" BSPM X 1/2" BSPF	1
10	AB10104A	HANDLE	1

SECTION 9

INDEX

Assembly drawings & parts 24 ~ 27

Ball valve 15, 17, 18, 21, 22

Bystanders and children Safety manual, 6

Checklist (pre operating) 20, 22

Cleaning the sprayer 23

Contents 3, 13, 24

Croplands customer support
back cover, 24

Croplands technical support 24

Croplands web site back cover, 24

Daily start-up procedure 20

Date of publication 4

Dimensions 7 ~ 9

Disclaimer 2

Drain 18, 23

Emergency action plan 22

Fill tank 15, 16, 17, 21, 22

Fire Fighting 22

First time start-up 20, 21

Hook-up 14

Hose reel & lock 11, 18

Important information 4

Introduction 2

Lids & Lid basket 10, 16, 22

Load & unloading 6, 14, 16, 20

Main tank 10, 25, 26

Maintenance 23

Manuals 4, 11, 19, 20, 22, 23

Notes 4, 5, 14, 16, 20, 23, 24 ~ 27

Nozzle 11, 19, 22

Nufarm 2

Operator training & responsibilities - 20, 22, Safety manual

Parts 24 ~ 27 or croplands.com.au

Plumbing system description
15 ~ 17

Prestart checks 20

Product identification & specification Section 3, 7 ~ 11

Pump information 20, 22

Pump running dry 19, 23, pump manual

Safety instructions 4, 6, 14, 16, 20, 22

Safety manual 4, 6, 20

Safety decals 4, 6

Serial number 10

Spray pressure 17, 21

Spray method 22

Sprayer operation 19 ~ 22

Storage of sprayer 23

Suction from dam 15, 16, 17, 21

Suction from tank 15, 16, 17, 21

Table of contents 3, 13, 24

Tank draining 18

Tank fill 15, 16, 21, 22

Tank level 10

Tank lids 10, 15, 16

Technical support 24

Troubleshooting pumps 23

Vehicle requirements Safety manual, 6, 14, 16

Warnings 4, 6, 14, 16, 20

Warranty 4, 5

Washdown 23

Water Source 15

Working environment
Safety manual

CROPLANDS

AUSTRALIA

Croplands Equipment Pty Ltd
ACN 006 450 184

PO Box 2441
Dry Creek
50 Cavan Road
Dry Creek SA 5094
Australia

Freecall: 1800 999 162
Freefax: 1800 623 778
Email: sales@croplands.com.au
Website: www.croplands.com.au

NEW ZEALAND

Croplands Equipment Ltd
PO Box 2004,
Stortford Bridge, Hastings 4120

Location:
1422 Omaha Road,
Hastings 4120
New Zealand

Freecall: 0800 106 898
Freefax: 0800 117 711
Email: sales@croplands.co.nz
Website: www.croplands.co.nz

Your nearest Croplands Dealer
can be found in the dealer section
on the Croplands website