

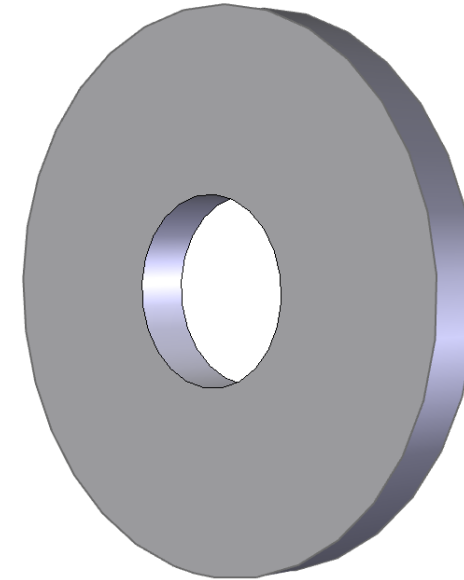
HP-119-20

WASHER 10 X 30 X 3 SS

As used on QM-420 & QM-380.

Stainless steel (3.0mm thick).

NOTE, there has been occasions where this washer has been replaced by a "standard" of the shelf washer. This can cause the attachment bolt thread to bottom out in the shaft, and hence the fan is loose – not by much hence it's not readily obvious until the fan is running. Dual "standard" washers will work as a fix.



NOTE

Drawings are for illustration purposes only - refer to sprayer for actual plumbing. Parts lists are indicative of the sprayer type.

Items in italics or without a part number are non stocked items and may need to be specially ordered.

For further parts information refer to www.croplands.com.au