

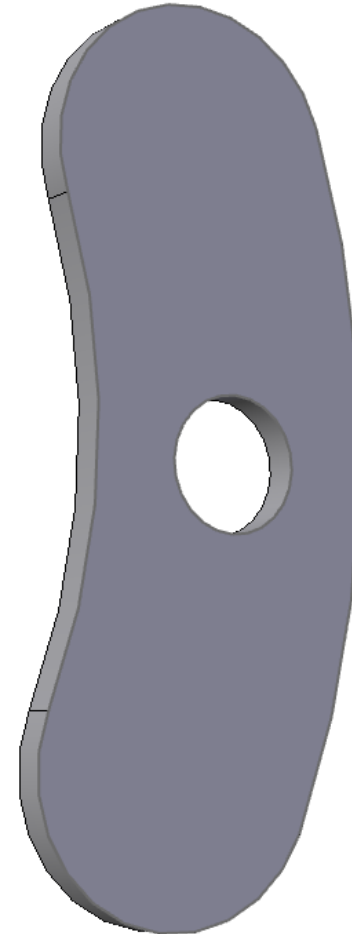
HP-219-18

WASHER KIDNEY SHAPED SS

As used on QM-420 & QM-380.

Each Fan Assembly required 3 pcs.

Stainless steel (2.5mm thick).



NOTE

Drawings are for illustration purposes only - refer to sprayer for actual plumbing. Parts lists are indicative of the sprayer type.

Items in italics or without a part number are non stocked items and may need to be specially ordered.

For further parts information refer to www.croplands.com.au