

HP-119-14A

Z SEAL Z305F SS304 ASSY

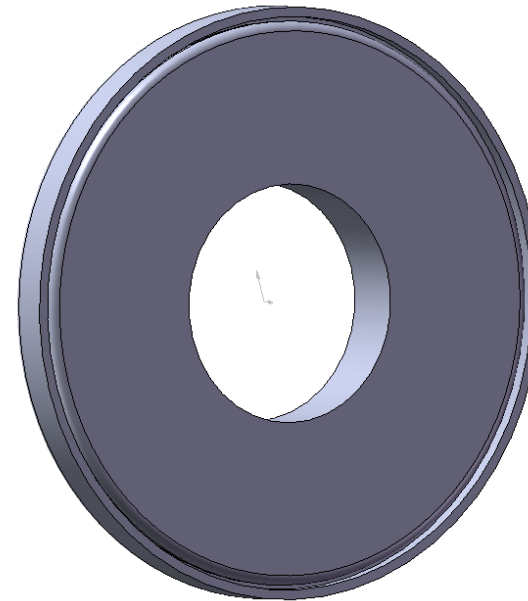
Stainless steel Z-Seal as used on QM-420 & QM-380 drive bodies.

Alternative = HP-119-14 (non-stainless steel / obsolete)

This component is 3 parts – outer & inner stainless steel plus an internal “red flock”.

When assembling, the interior cavity **MUST** be packed with a suitable grease such as Mobil XHP-222 or equivalent.

Note the alignment as shown (a common error is to install incorrectly).



NOTE

Drawings are for illustration purposes only - refer to sprayer for actual plumbing. Parts lists are indicative of the sprayer type.

Items in italics or without a part number are non stocked items and may need to be specially ordered.

For further parts information refer to www.croplands.com.au