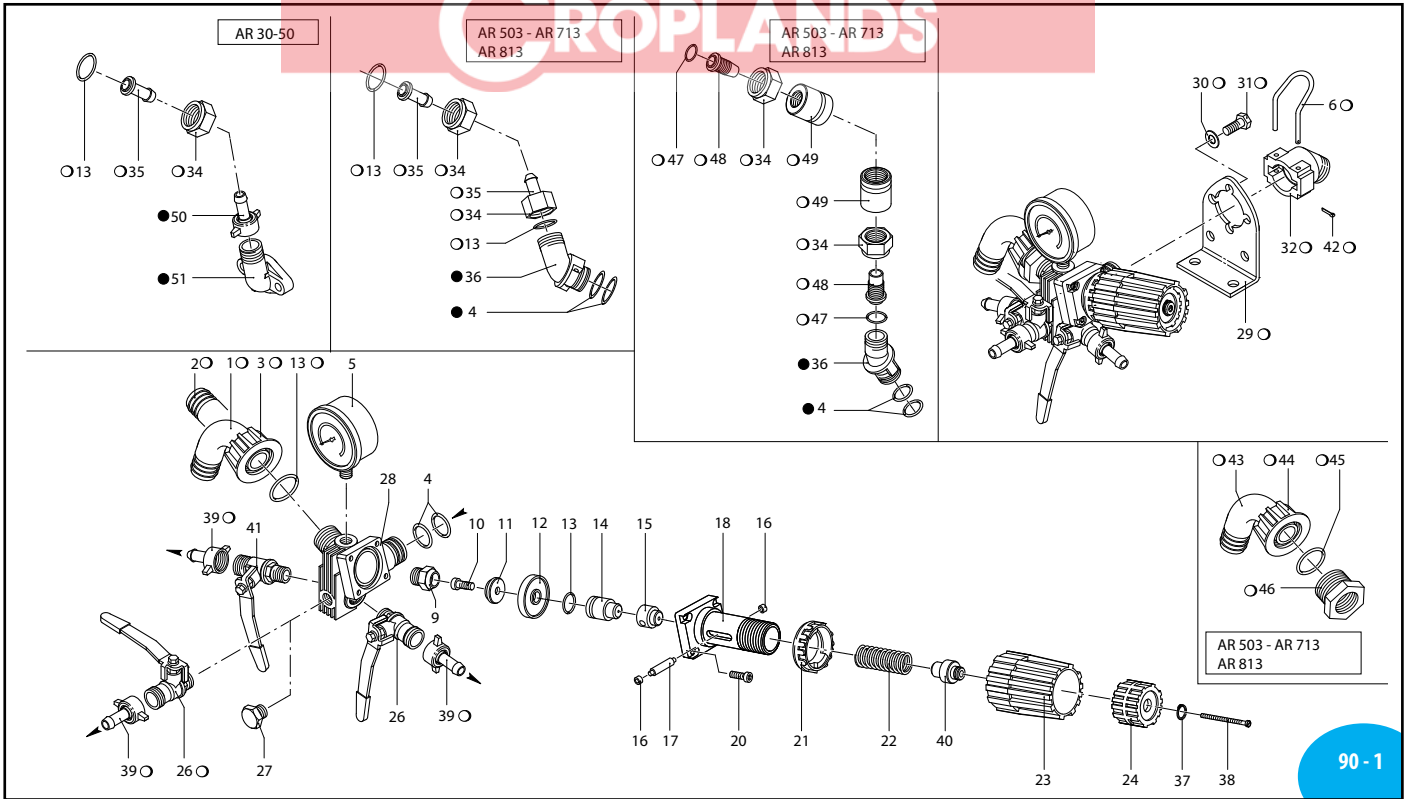
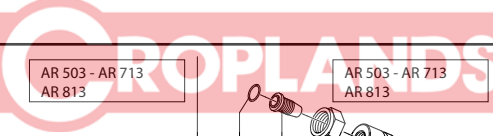


ANNOVIREVERBERI

RM 40



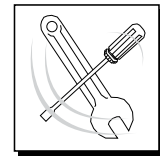
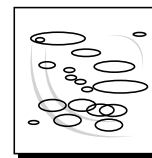
90 - 1

UN000493-GF

| Pos. | Cod. | Descrizione | Description | Q.ty | Note |
|------|---------|-------------------------|-------------------------|------|-------------------|
| 1 | 550460 | Curva ø 18 | Elbow | 1 | |
| 2 | 800340 | Portagomma ø 20 | Hose tail | 1 | Optional |
| 3 | 800342 | Portagomma ø 16 | Hose tail | 1 | Optional |
| 4 | 550450 | Girello 3/4" G | Ring nut | 1 | |
| 5 | 390180 | OR ø 18,72x2,62 | O-Ring | 4 | ► |
| 6 | 550545 | Manometro ø 63 | Pressure gauge | 1 | 0-80 bar ● |
| 9 | 1150520 | Sede valvola | Valve seat | 1 | ■ |
| 10 | 680560 | Vite TCEI M 6x16 | Bolt | 1 | ● C ₁₀ |
| 11 | 1040640 | Valvola inox | Valve | 1 | |
| 12 | 1040630 | Membranina | Diaphragm | 1 | Desmopan |
| 13 | 880830 | OR ø 15,54x2,62 | O-Ring | 4 | ► |
| 14 | 1040621 | Pistone | Piston | 1 | |
| 15 | 1150560 | Distanziale molla | Spring spacer | 1 | |
| 16 | 1150600 | Rullino | Roller | 2 | |
| 17 | 1150540 | Perno | Pin | 1 | |
| 18 | 1150510 | Corpo superiore | Upper body | 1 | ☒ |
| 20 | 780330 | Vite TCEI M 6x20 | Bolt | 4 | C ₁₀ |
| 21 | 1150530 | Frontale | Plate | 1 | ☒ |
| 22 | 394760 | Molla | Spring | 1 | ☒ |
| 23 | 1150550 | Manopola rossa | Adjustment knob | 1 | |
| 24 | 1150570 | Ghiera carica molla | Ring nut | 1 | |
| 26 | 130491 | Rub. 3/8"-1/2" G (M) DX | Right valve | 2 | ex 30491 ● |
| 27 | 130171 | Tappo 3/8" G | Plug | 1 | ex 30171 ■ |
| 28 | 1150500 | Corpo valvola | Valve body | 1 | |
| 29 | 1150590 | Staffa | Bracket | 1 | |
| 30 | 390311 | Rosetta øi 8,5 | Washer | 2 | |
| 31 | 180431 | Vite TE M 8x16 | Bolt | 2 | C ₂₀ |
| 32 | 1040770 | Attacco 3/4" G (M) | Coupling | 1 | |
| 34 | 1040790 | Girello raccordo 3/4" G | Nut | 2 | |
| 35 | 1150580 | Portagomma ø 13 | Hose tail | 2 | |
| 36 | 1040760 | Attacco 3/4" G | Coupling | 1 | |
| 37 | 480550 | Anello seeger | Circlip | 1 | |
| 38 | 1150650 | Vite TCTC M 3x60 | Screw | 1 | ● C ₅ |
| 39 | 110131 | Racc. 1/2" G+tub. ø10 | Fitting 1/2" G+hose ø10 | 3 | ex 10131 |
| 40 | 1150660 | Distanziale molla | Spring spacer | 1 | |
| 41 | 130492 | Rub. 3/8"-1/2" G (M) SX | Left valve | 1 | ex 30492 ● |

| Pos. | Cod. | Descrizione | Description | Q.ty | Note |
|------|---------|--------------------------|-------------------------|------|------|
| 42 | 1040950 | Copiglia | Split pin | 1 | |
| 43 | 550370 | Curva ø 25 | Elbow | 1 | |
| 44 | 550242 | Girello 1" G | Ring nut | 1 | |
| 45 | 550350 | OR ø 23,81x2,62 | O-Ring | 1 | |
| 46 | 800720 | Niples 3/4" G(F)-1" G(M) | Threaded adapter | 1 | ● |
| 47 | 960160 | OR ø 17,86x2,62 | O-Ring | 2 | ► |
| 48 | 1040810 | Portagomma ø 13x24 | Hose tail | 2 | |
| 49 | 1040800 | Ghiera raccordo | Ring nut | 2 | |
| 50 | 110130 | Racc. 1/2" G+tub. ø13 | Fitting 1/2" G+hose ø13 | 1 | |
| 51 | 450145 | Flangia raccordo | Flange | 1 | |

○ Non compreso nel RM 40 - No part of RM 40
● Compreso nella pompa - Part of pump



| KIT 1988 OR O-Rings | | | |
|---------------------------|------|------|------|
| Pos. | Q.ty | Pos. | Q.ty |
| 4 | 2 | | |
| 13 | 4 | | |

| KIT 1989 Pronto intervento Maintenance repair | | | |
|---|------|------|------|
| Pos. | Q.ty | Pos. | Q.ty |
| 4 | 2 | 23 | 1 |
| 6 | 1 | 24 | 1 |
| 9 | 1 | 37 | 1 |
| 11 | 1 | 38 | 1 |
| 12 | 1 | 40 | 1 |
| 13 | 4 | 42 | 1 |
| 15 | 1 | | |
| 17 | 1 | | |
| 21 | 1 | | |
| 22 | 1 | | |

NOTE

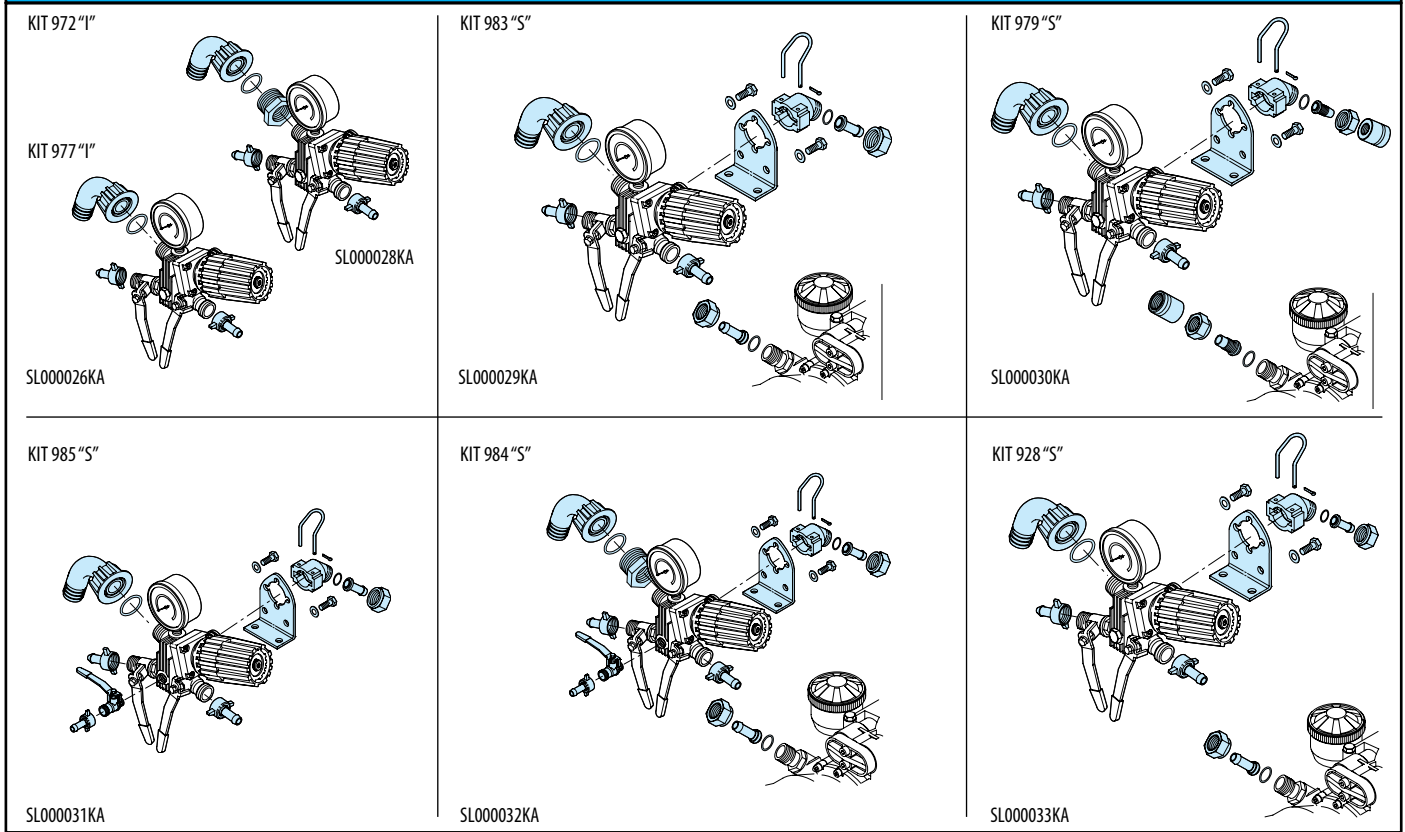
SOME PARTS ARE NON-STOCK
ITEMS AND MAY NEED TO BE
ORDERED

RM 40

Kit per/for RM 40

NOTE

PLEASE ADD PREFIX **AR**
TO REFLECT CROPLANDS
PART NUMBER



Comando incorporato e separato - Build-in control unit and remote control

| KIT 972 "I" Comando incorporato Build in control | | KIT 977 "I" Comando incorporato Build in control | |
|--|------|--|------|
| Pos. | Q.ty | Pos. | Q.ty |
| 39 | 3 | 1 | 1 |
| 43 | 1 | 3 | 1 |
| 44 | 1 | 13 | 4 |
| 45 | 1 | 39 | 3 |
| 46 | 1 | | |
| Per / for AR 713 AR 813 | | Per / for AR 503 | |

| KIT 983 "S" Comando separato Remote control | | | |
|---|------|------|------|
| Pos. | Q.ty | Pos. | Q.ty |
| 1 | 1 | 39 | 3 |
| 3 | 1 | 42 | 1 |
| 6 | 1 | 47 | |
| 13 | 4 | | |
| 29 | 1 | | |
| 30 | 2 | | |
| 31 | 2 | | |
| 32 | 1 | | |
| 34 | 2 | | |
| 35 | 2 | | |
| Per / for AR 503 | | | |

| KIT 979 "S" Comando separato Remote control | | | |
|---|------|------|------|
| Pos. | Q.ty | Pos. | Q.ty |
| 1 | 1 | 42 | 1 |
| 3 | 1 | 47 | 2 |
| 6 | 1 | 48 | 2 |
| 13 | 4 | 49 | 2 |
| 29 | 1 | | |
| 30 | 2 | | |
| 31 | 2 | | |
| 32 | 1 | | |
| 34 | 2 | | |
| 39 | 3 | | |
| Per / for AR 503 - AR 713 - AR 813 | | | |

| KIT 985 "S" Comando separato Remote control | | | |
|---|------|------|------|
| Pos. | Q.ty | Pos. | Q.ty |
| 1 | 1 | 35 | 2 |
| 3 | 1 | 39 | 3 |
| 6 | 1 | 42 | 1 |
| 13 | 4 | 47 | 2 |
| 26 | 2 | | |
| 29 | 1 | | |
| 30 | 2 | | |
| 31 | 2 | | |
| 32 | 1 | | |
| 34 | 2 | | |
| Per / for AR 30 - AR 50 | | | |

| KIT 984 "S" Comando separato Remote control | | | |
|---|------|------|------|
| Pos. | Q.ty | Pos. | Q.ty |
| 6 | 1 | 43 | 1 |
| 26 | 2 | 44 | 1 |
| 29 | 1 | 45 | 1 |
| 30 | 2 | 46 | 1 |
| 31 | 2 | 47 | 2 |
| 32 | 1 | | |
| 34 | 2 | | |
| 35 | 2 | | |
| 39 | 3 | | |
| 42 | 1 | | |
| Per / for AR 503 - AR 713 - AR 813 | | | |

| KIT 928 "S" Comando separato Remote control | | | |
|---|------|------|------|
| Pos. | Q.ty | Pos. | Q.ty |
| 1 | 1 | 39 | 3 |
| 3 | 1 | 42 | 1 |
| 6 | 1 | 47 | 2 |
| 13 | 4 | | |
| 29 | 1 | | |
| 30 | 2 | | |
| 31 | 2 | | |
| 32 | 1 | | |
| 34 | 2 | | |
| 35 | 2 | | |
| Per / for AR 503 | | | |

Gruppi comando
Control units