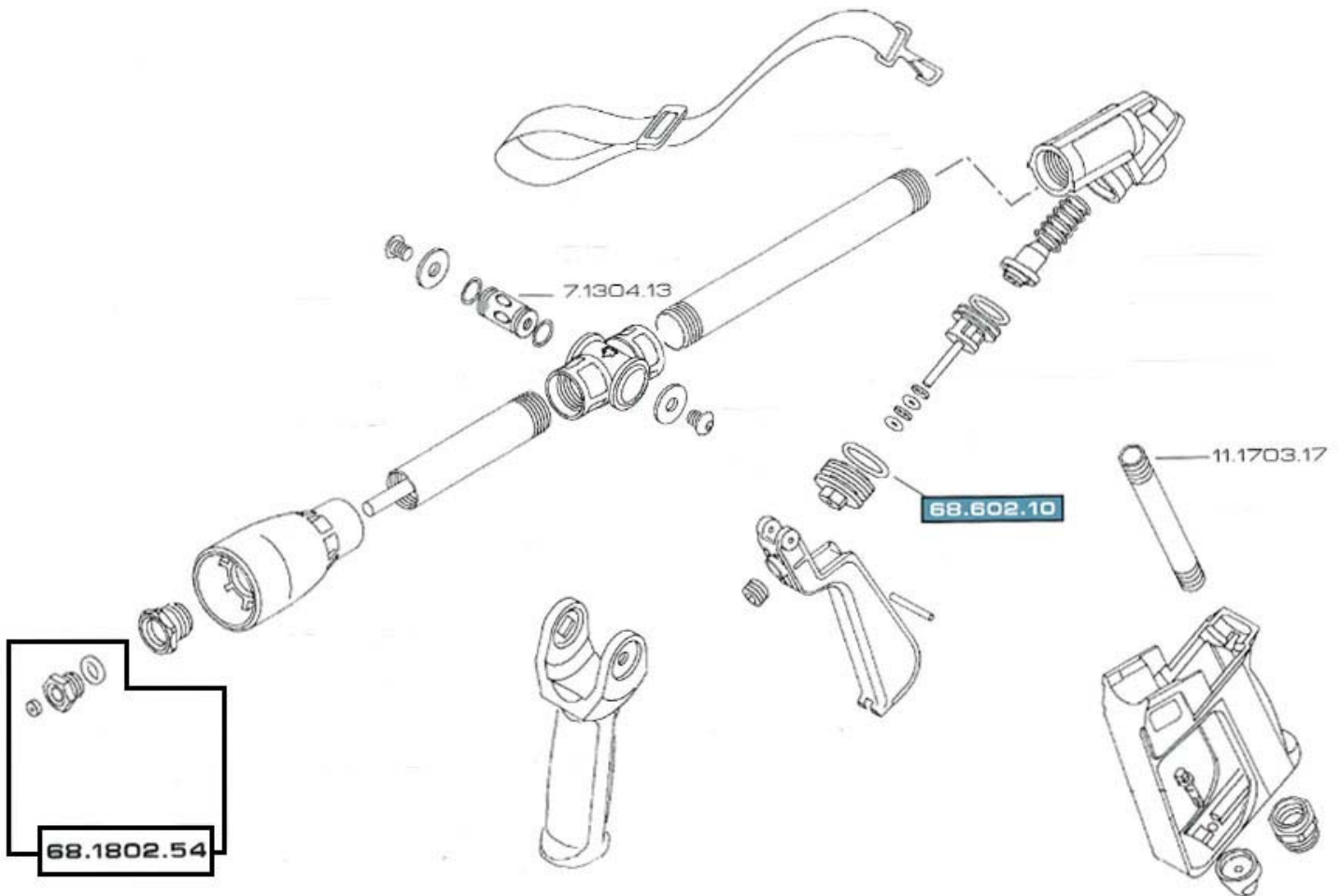




Turbine Gun for high pressure spraying and washing up to 140 F and distances up to 14m with 2.3mm brass nozzle. Ergonomic handle with hand shield and trigger lock to prevent accidental opening. New front handle for easy spray adjustment and spray tip shock proof protection. Brass, stainless steel and high resistance plastic material construction.

Maximum Spray Tip Hole:	4.5mm
Maximum Pressure:	60 bar / 850 psi
Weight:	1.6 Kg
Length:	670 mm



A repair kit is available for the **B7.901.10** spray gun under the following part number **B7.302.4**.

NOTE

PLEASE ADD PREFIX **B** TO
PART NUMBER TO REFLECT
CROPLANDS PART NUMBER

NOTE

SOME PARTS ARE NON-STOCK
ITEMS AND MAY NEED TO BE
ORDERED