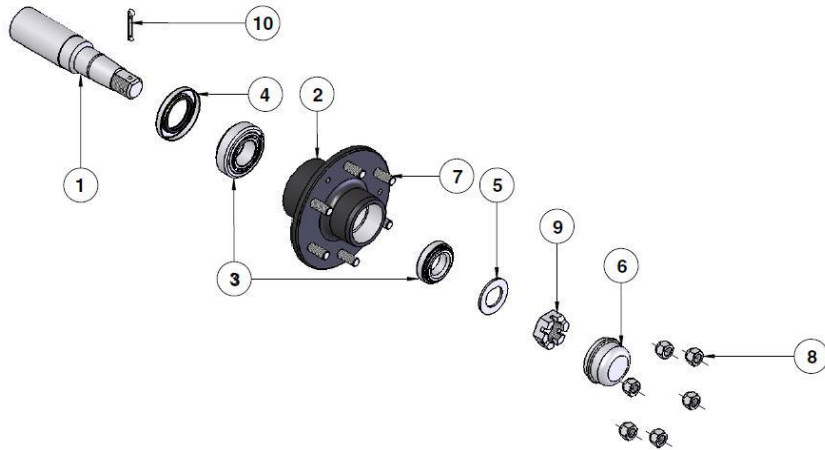


| Item | Part No. | Description | Qty |
|------|-----------------------|--|-----|
| 1 | HP-199DB | STUB AXLE 65MM ROUND 6/205PCD | 4 |
| 2 | BP-400-2 | PIVOT BUSH TRAILING ARM 5/8" | 8 |
| 3 | BP-400-3 | THRUST WASHER | 4 |
| 4 | <i>N/A</i> | Refer stub axle | |
| 5 | BP-400J-1 | TRAILING ARM LT FNT / RT BCK (no hub) | 2 |
| 6 | <i>BP-400J-2</i> | TRAILING ARM RT FNT / LT BCK (no hub) | 2 |
| 7 | BP-400JLSPRING | SPRING ASSY (NO SEAT) | 2 |
| | <i>BP-400JSPRING</i> | SPRING AND SEAT ASSY BP-400J | |
| 8 | MT10013 | SPEED SENSOR MOUNTING BRACKET (<i>not shown</i>) | 1 |

Note: Drawing is for illustration purpose only
Refer to parts list.



STUB AXLE HP-199DB

| Item | Croplands P/N | Max Description |
|------|--------------------|--|
| 1 | HP-199DA-1 | STUB 65RDx438LG (NOT MACHINED) |
| 2 | HP-199DA-2 | HUB 6/205PCD |
| 3 | HP-199DA-3 | BEARING KIT 30208/30211 |
| 4 | HP-199DA-4 | TRIPLE LIP SEAL 100x70x12mm |
| 4a | HP-199DA-4A | SEAL RING 57x70.5x16.5mm (<i>not shown</i>) |
| 4b | HP-199DA-4B | WEAR RING TO SUIT T.L.S (<i>not shown</i>) |
| 5 | <i>N/A</i> | <i>N/A</i> |
| 6 | HP-199DA-6 | DUST CAP (<i>3 screws items 11 and 12</i>) |
| 7 | HP-199F-7 | WHEEL STUD M18x1.5x65 |
| 8 | HP-199F-8 | WHEEL NUT M18x1.5 |
| 9 | HP-199DA-9 | SLOTTED NUT M33x2 |
| 10 | HP-199DA-10 | SPLIT PIN M50x6 |
| 11 | HP-199DA-11 | SOCKET HEAD CAP SCREW M8x25 (<i>not shown</i>) |
| 12 | HP-199E-12 | RIB LOCK WASHER M8 (<i>not shown</i>) |

Note: Parts in italics are non-stock items and may need to be ordered