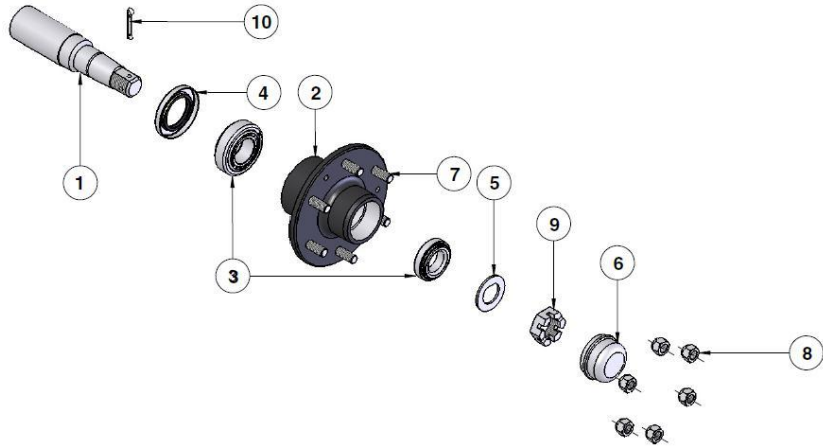


**CROPLANDS PART NUMBERS: BP-509L 1100L/1500L SOLID AXLE PONY**



Item	Part No.	Description	Qty
1	<b>HP-199F</b>	AXLE/HUB 6/205 50SQ ANDYS	2
2	<b>HP-205D-1</b>	AXLE BRACKET <i>(not shown)</i>	2
3	<b>MT10013</b>	SPEED SENSOR MOUNTING BRACKET <i>(not shown)</i>	1

*Note: Drawing is for illustration purpose only  
Refer to parts list.*



Item	Part No.	Description
1	<i>HP-199F-1A</i>	STUB 50SQx1700LG
2	<b>HP-199F-2</b>	HUB DRILLED 6/205PCD
3	<b>HP-199F-3</b>	BEARING KIT 32209/32206
4	<b>HP-199F-4</b>	SEAL M85x54x10
4a	<b>HP-199F-4A</b>	SEAL RING M46x54x13 <i>(not shown)</i>
5	<b>HP-199F-5</b>	FLAT WASHER 1 1/8"
6	<b>HP-199F-6</b>	DUST CAP <i>(3 screws items 11 and 12)</i>
7	<b>HP-199F-7</b>	WHEEL STUD M18x1.5x65
8	<b>HP-199F-8</b>	WHEEL NUT M18x1.5
9	<b>HP-199F-9</b>	SLOTTED NUT M27x2
10	<b>HP-199F-10</b>	SPLIT PIN M5x50
11	<b>HP-199F-11</b>	SOCKET HEAD CAP SCREW M6x30 <i>(not shown)</i>
12	<b>HP-199F-12</b>	RIB LOCK WASHER M6 <i>(not shown)</i>

**STUB AXLE HP-199F**

*Note: Parts in italics are non-stock items and may need to be ordered*