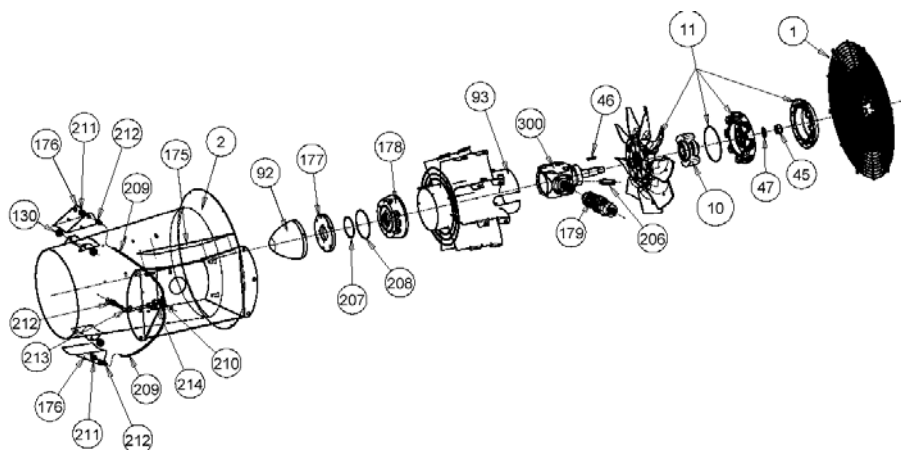
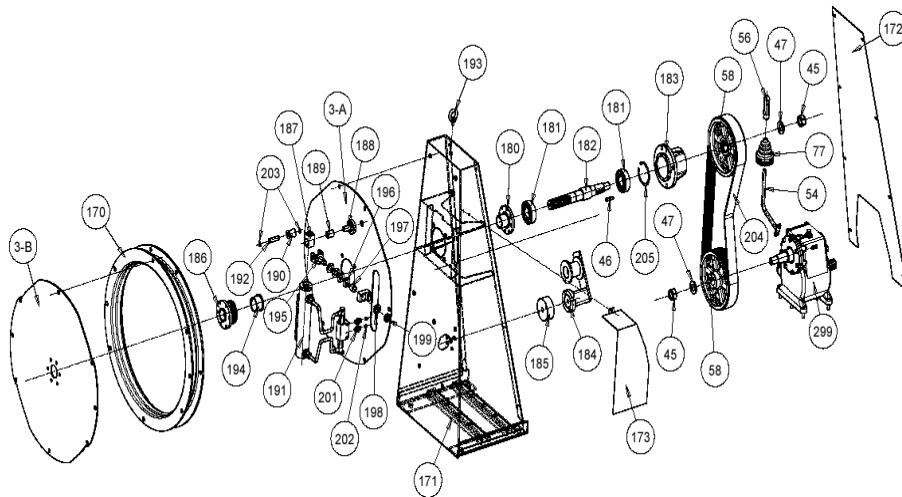


GUNVPL500

Aggiornato 2011



RIF.	CODICE-CODE	n°	DESCRIZIONE	DESCRIPTION
1	RET00000002	1	RETE 550 ZN	GALVANISED PROTECTION D.550
2	CNV00000031	1	CONVOGLIATORE GUNVPL500 - completo	COMPLETE GALV. FAN HOUSING GUNVPL500
10 - 11	VPLDSN50005	1	VENTOLA CON FRIZIONE PER GUNVPL500	COMPLETE GUNVPL500 FAN WITH CLUTCH
	COP00000010	1	COPERCHIO GIALLO VENTOLA VPL	YELLOW COVER FOR VPL FAN
10	FRI00000007	1	FRIZIONE VPL COMPLETA	COMPLETE VPL CLUTCH
45	AUT00000010	1	AUTOBLOCCANTE 24MB	LOCKNUT 24MB
46	CHI00000003	1	CHIAVETTA 8X7X40	8X7X40 KEY
47	RON00000005	1	RONDELLA 24X44X4	24X44X4 WASHER
92	OGI00000005	1	CAG/382 OGIVA	OGIVE CAG/382
93	RAD00000018	1	RADDRIZZATORE ZINCATO	GALVANISED STRAIGHTENING VANES
130	MAN00000012	4	POMELLO 6X15	HANDGRIP 6X15
175	RIP00000007	1	CAG 462 RIPARO FE ZN	GALVANISED COVER CAG462
	SCA00000008	2	BANDELLA INOX PORTAGETTI COMPLETA	SS COMPLETE DEFLECTOR FOR NOZZLES
176	SAD00000001		CAG/470 SCATOLA PORTA GETTI	DEFLECTOR FOR NOZZLE CAG470
	DAD00000109		DADO 6MA INOX N.4	SS NUT 6MA
	DAD00000036	2	CONTRODADO OTTONE 5.5 CHIAVE20	BRASS NUT 5.5 - 20KEY
177	FLA00000015	1	CAG/371 FLANGIA X TUBO PORTA GETTI	FLANGE CAG/371
178	FUS00000141	1	CAG/381 TUBO PORTA GETTI	ALUMINIUM COVER FOR NOZZLES CAG/381
179	GIU00000002	1	DOPPIO GIUNTO CARDANICO DG1 COMPLETO	COMPLETE DOUBLE JOINT DG1
	GIU00000001	1	DOPPIO GIUNTO CARDANICO DG1	DOUBLE JOINT DG1
	PRO00000014	2	CAG/760 PROLUNGA INGRASSATORE	EXTENSION GREASE CAG/760
	ING00000004	2	INGRASSATORE 6X1 A 90°	GREASE 6X1 AT 90°
207	OR000000021	1	OR 3525 94,92X2,62	OR 3525 94,92X2,62
208	OR000000020	1	OR 3375 133,02X2,62	OR 3375 133,02X2,62
209	TUB00000073	2	TUBO NYLON 10X1 - 400mm	NYLON 10X1 400mm
212	RAC00000004	2	CAG RACCORDO OGIVA 6 1/4F	FITTING FOR OGIVE 1/4F
210	DIS00000030	1	CAG/551 DISTRIBUTORE X GETTI COMPLETO	COMPLETE DISTRIBUTOR FOR NOZZLES CAG/551
	RAC00000001	2	RACCORDO AD OGIVA 201,6 1/4M	FITTING FOR OGIVE 201,6 1/4M
213	TUB00000075	1	CAG/555 TUBO RAME 10X1	COPPER PIPE 10X1 CAG/555
214	NIP00000004	1	NIPPLO 102 3/8-1/2	NIPPLE 102 3/8-1/2
	RAC00000006	1	RACCORDO L 110 3/8MF	FITTING L110 3/8MF
	RAC00000005	2	RACCORDO AD OGIVA 201,10 3/8 M	FITTING FOR OGIVE 201,10 3/8 M
	PRI00000012	1	PRIGIONIERO 8X20	8X20 STUD
211	ATT00000002	2	CAG/540 ATTACCO X GETTI LATERALI	SIDE COUPLING FOR NOZZLES CAG/540
300	RIN00000003	1	RINVIO X VPL COMPLETO DI PROLUNGA E OLIO	COMPLETE ANGULAR BOX COMPLETE OF OIL
206	PRO00000003	1	CAG/VPL/10 RINVIO ANGOLARE 2020	CAG/VPL/10 ANGULAR BOX 2020
	TBC00000005	6	CAG/BP/02 PROLUNGA OLIO ZINCATA	CAG/BP/02 GALVANISED EXTENSION FOR OIL
	RON000000148	6	TBCE 8X16	TBCE 8X16
		6	RONDELLA 8X22	8X22 WASHER

GUNVPL500


RIF.	CODICE	DESCRIZIONE	
3-A	PIA00000121	1 CAG/PIASTRA FE PORTATUTTO COMP. Zn	GALVANISED COMPLETE BACKPLATE
	PIA00000114	CAG/405 PIASTRA PORTA TUTTO	BACKPLATE CAG/405
	SUP00000017	CAG630 SUPPORTO SPINGI CILINDRO	SUPPORT CYLINDER PUSH CAG630
188	SUP00000016	CAG570 SUPPORTO X CILINDRO	CYLINDER SUPPORT CAG570
3-B	PIA00000092	1 CAG/362 PIASTRA DELLA RALLA -ZINCATA	GALVANISED WHEEL CAG/362
58	FUS00000148	2 CAG/323 PULEGGIA X CINGHIA 10L	PULLEY FOR BELT CAG/323
170	RAL00000004	1 CAG/522 RALLA U 01N065	WHEEL CAG/522
171	TEL00000001	1 TELAIO GUNVPL500 COMPLETO	GALVANISED COMPLETE FRAME GUNVPL500
172	RIP00000013	1 CAG 710 RIPARO X TELAIO Dal 205	GALVANISED COVER FOR FRAME CAG 720
173	CAR00000003	1 CAG/680 CARTER X IDRAULICA	CARTER FOR HYDRAULIC CAG/680
	SUP00000018	1 CAG279 SUPPORTO COMPLETO CINGHIE	COMPLETE SUPPORT BELTS CAG279
182	PER00000030	CAG 281 PERNO X SUPPORTO CINGHIE	PIVOT FOR SUPPORT CAG281
180	COP00000003	CAG/282 COPERCHIO PER SUPPORTO	COVER FOR SUPPORT CAG282
	TCC00000004	TCCE 6X14Z N. 8	GALV. TCCE 6X14
181	CUS00000018	CUSCINETTO 6307 2RS	BEARING 6307 2RS
183	FUS00000157	CAG/280/L SUPPORTO X CINGHIE	SUPPORTO FOR BELTS CAG/280/6
205	SEG00000014	SEGER I 80	CIRCLIP I80
46	CHI00000003	CHIAVETTA 8X7X40	8X7X40 KEY
47	RON00000103	RONDELLA 24X44X4	24X44X4 WASHER
45	AUT00000010	AUTOBLOCCANTE M24 P2	LOCKNUT 24MB P2
184	TEN00000004	1 TENDICINGHIA TC1PU+Rullo dal 205	TENSIONER FOR BELTS WITH ROLLER
185	SUP00000047	1 CAG/H/91 SUPPORTO TENDICINGHIA	SUPPORT FOR TENSIONER CAG/H/91
	FLA00000003	1 CAG283 FLANGIA CON INGRANAGGIO FINITA	COMPLETE FLANGE WITH GEAR CAG283
186	FLA00000005	CAG/284 FLANGIA CON INGRANAGGIO	FLANGE WITH GEAR CAG/284
194	BOC00000002	CAG/288 BOCCOLA X FLANGIA	BUSH FOR FLANGE CAG/288
187	OCC00000003	1 CAG/580 OCCHIO X CIINDRO	RING FOR CYLINDER CAG580
	RUL00000002	1 CAG/610 RULLO COMPLETO SPINGICILINDRO	COMPLETE ROLL CAG610
190	RUL00000001	CAG/620 RULLO SPINGI CILINDRO	ROLL CAG/620
203	SEG00000020	SEGER E 14	CIRCLIP E14
195	FOR00000004	CAG/660 FORCELLA SPINGI CILINDRO	FORK CAG660
196	MLL00000014	MOLLA TAZZA 18X35X1,25 GR	SPRING 18X35X1,25
197	BOC00000025	BOCCOLA BRONZO 18X23X18	BRONZE BUSH 18X23X18
199	GHI00000004	GHIERA AUTOBLOCCANTE M17P1	LOCKNUT M17P1
192	SPN00000013	CAG/640 SPINOTTO X SPINGI CILINDRO	PIN CAG640
198	RON00000100	RONDELLA 18X34X3	WASHER 18X34X3
189	BOC00000027	1 BOCCOLA BRONZO 18X23X28	BRONZE BUSH 18X23X28
191	CIL00000001	1 CILINDRO COMPLETO DI CREMAGLIERA	COMPLETE CYLINDER WITH RACK
202	GRAF0R00012	2 GRANO M8X80 FORO 0,7	SCREW M8X80 HOLE OF 0,7
201	NIP00000003	2 NIPPLO 1/4M1/4M	NIPPLE 1/4M1/4M
193	GOL00000001	1 GOLFARE M10 MASCHIO	EYEBOLT M10MALE
	TAP00000007	1 TAPPO CILINDRICO 5,8 1/4 Z	CILINDRIC CAP 5,8 1/4Z
204	CIN00000003	1 CINGHIA 10L 1715	BELT 10L 1715
299	MOLCAG00001	1 MOLTIPLICATORE CM9-CAG SENZA LEVA	GEARBOX CM9CAG WITHOUT LEVER
45	AUT00000010	AUTOBLOCCANTE 24	LOCKNUT 24
46	CHI00000003	CHIAVETTA 8X7X40	8X7X40 KEY
47	RON00000005	1 RONDELLA 24X44X4	24X44X4 WASHER
49	SEG00000004	1 SEGER E 35	CIRCLIP E35
50	DIS00000020	1 DISTANZIERE 42X35X5	SPACER 42X35X5
	LEV00000023	1 CAG/04 LEVA COMPLETA CAG/CM9 ZN	GALV. COMPLETE LEVER FOR CM9CAG
54	LEV00000040	LEVA FE MOLTIPLICATORE	LEVER
56	MAN00000001	MANOPLA 1003 D.13	HANDGRIP D.13
77	CUF00000001	CUFFIA GOMMA	RUBBER CAP