

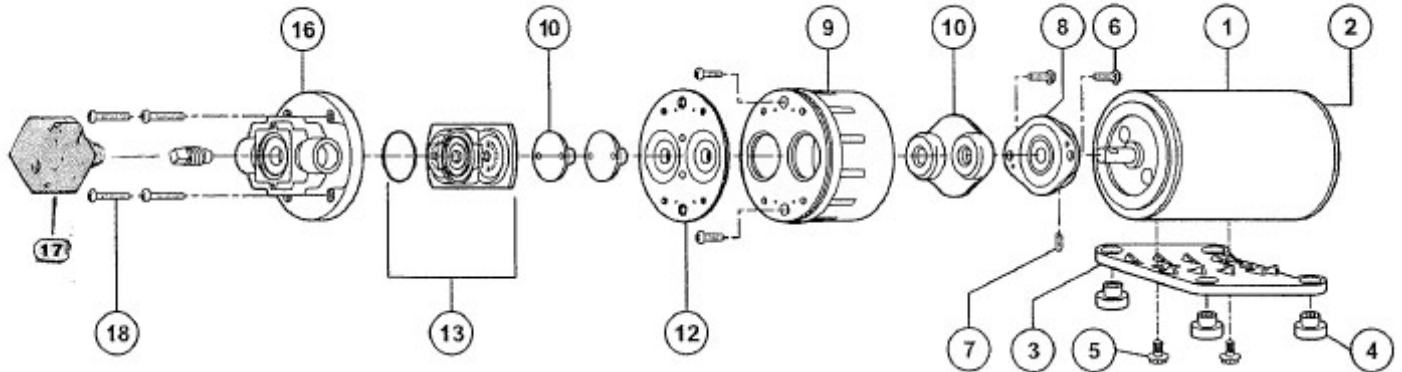
CROPLANDS

FL2100 Series Pumps

2100 Series – 12, 24 Volt DC & 230 Volt AC

1.9 LPM to 7.6 LPM, pressure up to 3.5 bar (50 psi), 3/8" NPT connections. For small booms, spot sprayers, grain and hay applications, dairy treat spray systems, foam markers and general purpose spraying.

2100 SERIES DEMAND PUMP



FL2100-131

Spare Part Description	Position	Part Number
Pressure Switch	17	FL2095-100
Diaphragms	12	FL21010-004
Check Valves	13	FL20914-003
Lower Housing	16	FL20500-507

FL2100-132

Spare Part Description	Position	Part Number
Pressure Switch	17	FL2095-100
Diaphragms	12	FL21010-004
Check Valves	13	FL20914-003
Lower Housing	16	FL20500-507

FL2100-134

Spare Part Description	Position	Part Number
Pressure Switch	17	FL2095-100
Diaphragms	12	FL21010-004
Check Valves	13	FL20028-015
Lower Housing	16	FL20500-507

FL2100-232

Spare Part Description	Position	Part Number
Pressure Switch	17	FL2095-100
Diaphragms	12	FL21010-004
Check Valves	13	FL20914-003
Lower Housing	16	FL20500-507

FL2100-234

Spare Part Description	Position	Part Number
Pressure Switch	17	FL2095-100
Diaphragms	12	FL21010-004
Check Valves	13	FL20028-015
Lower Housing	16	FL20500-507

FL2100-332

Spare Part Description	Position	Part Number
Pressure Switch	17	FL2095-100
Diaphragms	12	FL21010-004
Check Valves	13	FL20914-003
Lower Housing	16	FL20500-507

FL2100-561

Spare Part Description	Position	Part Number
Pressure Switch	17	N/A
Diaphragms	12	FL21010-004
Check Valves	13	FL20914-003
Lower Housing	16	FL20500-507

FL2100-647

Spare Part Description	Position	Part Number
Pressure Switch	17	N/A
Diaphragms	12	FL21010-004
Check Valves	13	FL20028-015
Lower Housing	16	FL20500-507

FL2100-732

Spare Part Description	Position	Part Number
Pressure Switch	17	FL2095-100
Diaphragms	12	FL21010-004
Check Valves	13	FL20914-003
Lower Housing	16	FL20500-507

FL2100-734

Spare Part Description	Position	Part Number
Pressure Switch	17	N/A
Diaphragms	12	FL21010-001
Check Valves	13	FL20028-035
Lower Housing	16	FL20500-507