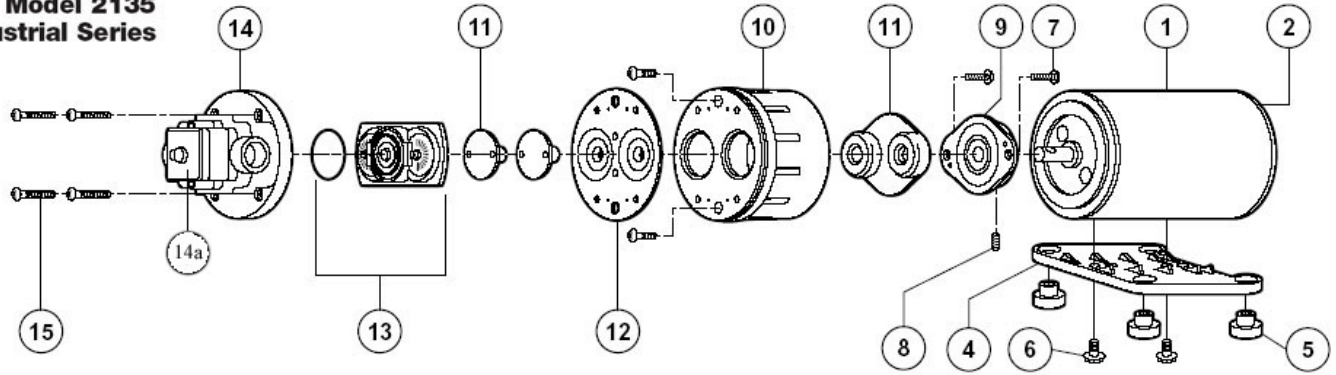


2135 Series

1.9 lpm to 7.6 lpm, pressure up to 3.5 bar (50 psi), 1/4" NPT connections and built in partial bypass. For small booms, spot sprayers, grain and hay applications, dairy teat spray systems, foam markers and general purpose spraying.

Model 2135 Industrial Series



FL2135-568

Spare Part Description	Position	Part Number
Pressure Switch	14a	FL2090-119
Diaphragms	12	FL21020-002
Check Valves	13	FL20028-087
Lower Housing	14	FL20316-011