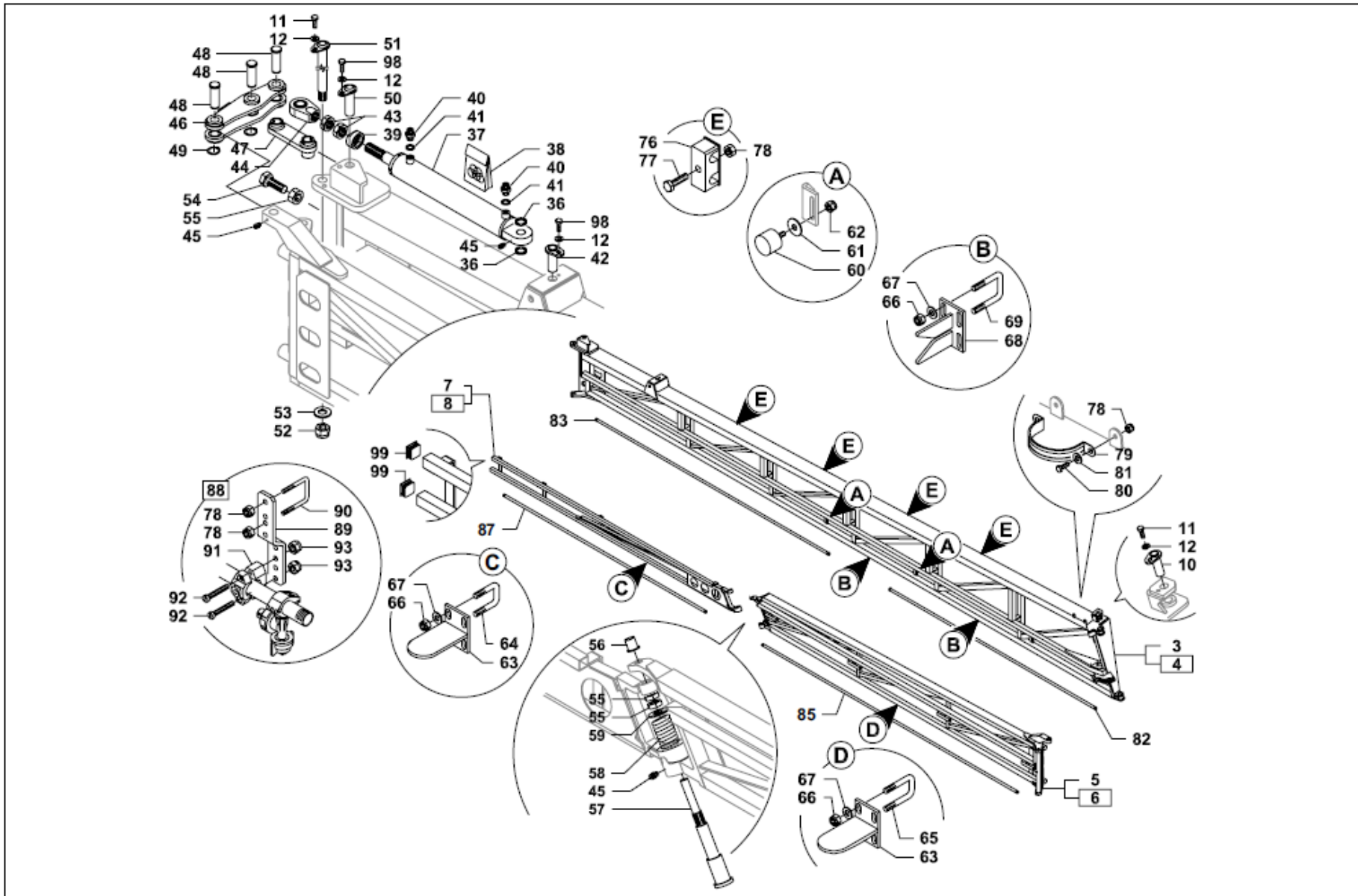


## CROPLANDS PART NUMBERS: GBCOMPL285-LH – Boom Arm 28.5m LH Standard



Pos	Part No	Description	Qty
3	<i>GBBG002915</i>	<i>INNER BOOM ARM R/H</i>	1
4	<i>GBBG002916</i>	<i>INNER BOOM ARM L/H</i>	1
5	<i>GB022400050V</i>	<i>OUTER BOOM ARM R/H</i>	1
6	<i>GB022400051V</i>	<i>OUTER BOOM ARM L/H</i>	1
7	<i>GB22800080V</i>	<i>BREAKAWAY ARM R/H</i>	1
8	<i>GB22800081V</i>	<i>BREAKAWAY ARM L/H</i>	1
10	<i>GB500100055V</i>	<i>PIN</i>	2
11	<i>GB900110025Z</i>	<i>M10 x 20mm BOLT (ZINC) 8.8</i>	2
12	<i>GB907200010Z</i>	<i>10mm SPRING WASHER</i>	2
36	<i>GB500200028Z</i>	<i>SPACER</i>	4
37	<i>GB024772</i>	<i>HYDRAULIC RAM</i>	2
38	<i>GB024776</i>	<i>SEAL KIT</i>	2
39	<i>GB003273</i>	<i>SPACER NUT M27</i>	2
40	<i>GB570500010Z</i>	<i>NIPPLE 1/4 BSP 1.0 ORIFICE</i>	8
41	<i>GB50243113</i>	<i>COPPER WASHER</i>	8
42	<i>GB500100055V</i>	<i>PIN</i>	2
43	<i>GB905220027Z</i>	<i>M27 PLAIN NUT (ZINC)</i>	4
44	<i>GB920100043Z</i>	<i>M27 BALL JOINT</i>	4
45	<i>GB919800020</i>	<i>GREASE NIPPLE</i>	16
46	<i>GB006461</i>	<i>LINK ARM OUTER FOLD</i>	4
47	<i>GB023200216V</i>	<i>LINK ARM PIVOT</i>	2
48	<i>GB006426</i>	<i>PIN</i>	6
49	<i>GB000187</i>	<i>CIRCLIP</i>	12
50	<i>GB500100110V</i>	<i>PIN</i>	2
51	<i>GB500100146V</i>	<i>PIN 28 2ND FOLD</i>	2
52	<i>GB905400024</i>	<i>M24 NYLOC NUT (ZINC)</i>	2
53	<i>GB907025044Z</i>	<i>M24 WASHER (ZINC)</i>	2
54	<i>GB900124050Z</i>	<i>SCREW</i>	2
55	<i>GB905200024Z</i>	<i>M24 PLAIN NUT (ZINC)</i>	4
56	<i>GB500200049</i>	<i>BUSH</i>	2
57	<i>GB500100111Z</i>	<i>BREAKAWAY SHAFT</i>	2
58	<i>GB919900023Z</i>	<i>BREAKAWAY SPRING</i>	2
59	<i>GB500400019Z</i>	<i>WASHER</i>	2
60	<i>GB950200004</i>	<i>RUBBER STOPPER 20mm</i>	4

Pos	Part No	Description	Qty
60	<i>GB950200001</i>	<i>RUBBER STOPPER 30mm</i>	
61	<i>GB907108024Z</i>	<i>M8 X 24mm WASHER</i>	4
62	<i>GB905400008</i>	<i>M8 NYLOC NUT (ZINC)</i>	4
63	<i>GB022400053V</i>	<i>WING SUPPORT MALE</i>	4
64	<i>XBMBB32</i>	<i>32mm U BOLT (M10)</i>	4
65	<i>XBMBB</i>	<i>40mm U BOLT (M10)</i>	4
66	<i>GB905400010</i>	<i>M10 NYLOC NUT (ZINC)</i>	32
67	<i>GB907010021Z</i>	<i>M10 WASHER (ZINC)</i>	32
68	<i>GB022400054V</i>	<i>WING SUPPORT FEMALE</i>	4
69	<i>XBMBB50</i>	<i>50mm U BOLT (M10)</i>	8
76	<i>GB950200058</i>	<i>CABLE RETAINER</i>	12
77	<i>GB900306035Z</i>	<i>M6 x 35mm BOLT (ZINC)</i>	12
78	<i>GB905300006</i>	<i>M6 NYLOC NUT (ZINC)</i>	124
79	<i>GB950200059</i>	<i>CABLE RETAINER</i>	4
80	<i>GB900106016Z</i>	<i>M6 x 35mm BOLT (ZINC)</i>	8
81	<i>GB907106018Z</i>	<i>6mm WASHER (ZINC)</i>	8
82	<i>GB550700500</i>	<i>7 HOLE SPRAY TUBE</i>	2
83	<i>GB550600500</i>	<i>6 HOLE SPRAY TUBE</i>	2
85	<i>GB550700500</i>	<i>7 HOLE SPRAY TUBE</i>	2
87	<i>GB550600500</i>	<i>6 HOLE SPRAY TUBE</i>	2
88	<i>GB999900100</i>	<i>SPRAY TUBE SUPPORT KIT</i>	26
89	<i>GB2018000418V</i>	<i>SPRAY TUBE BRACKET</i>	26
90	<i>GB500500004Z</i>	<i>SPRAY TUBE U BOLT</i>	26
91	<i>A425130</i>	<i>SPRAY TUBE 2 PIECE CLAMP</i>	26
92	<i>GB904506040X</i>	<i>M6 x 40mm SCREW STAINLESS</i>	52
93	<i>GB905400006X</i>	<i>M6 NYLOC NUT STAINLESS</i>	52
98	<i>GB900110020Z</i>	<i>M10 x 20mm BOLT (ZINC)</i>	2
99	<i>GB950130030</i>	<i>END CAP</i>	

**NOTE**

*Parts in italics are non-stock items and may need to be ordered.*