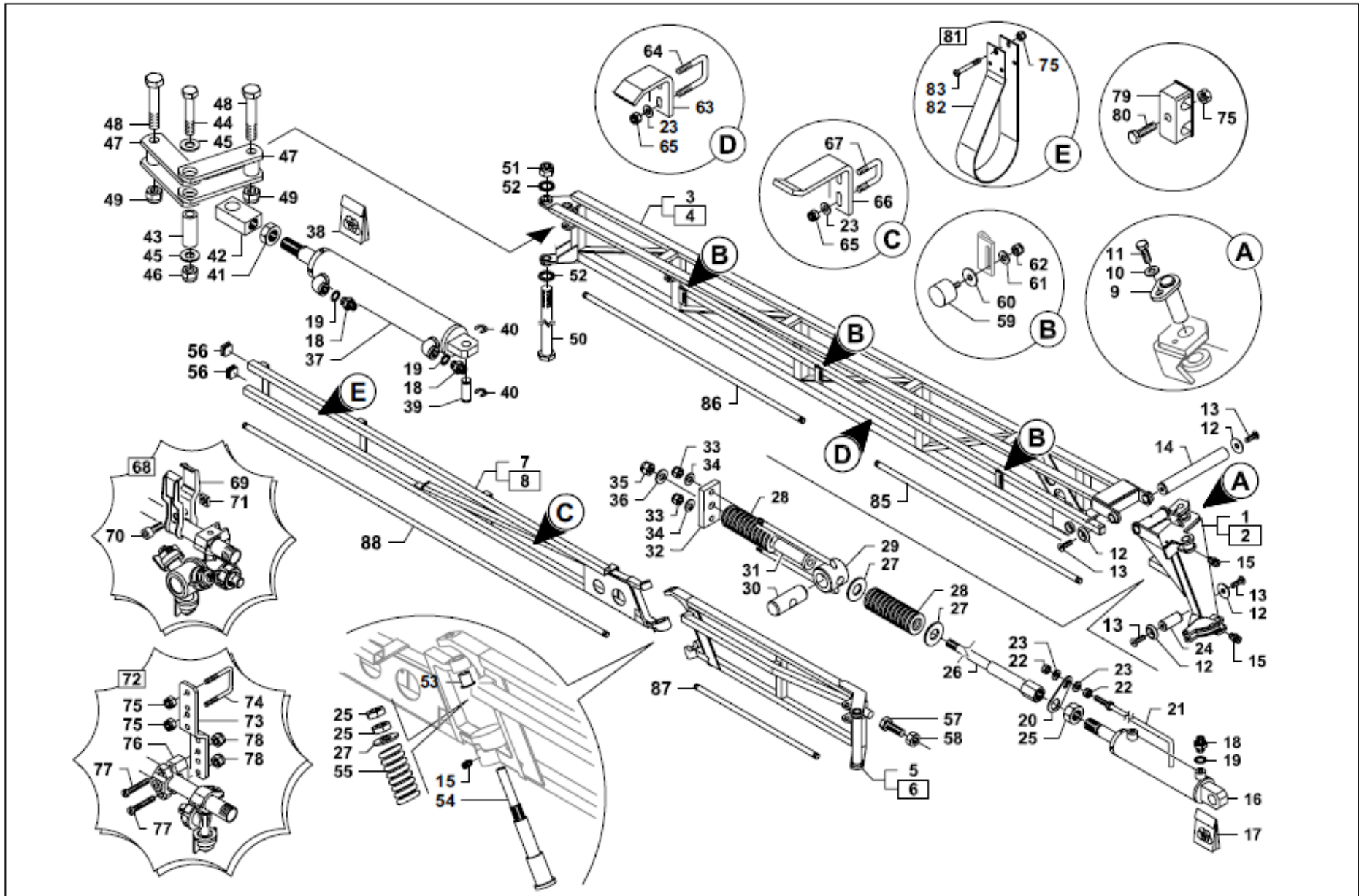


CROPLANDS PART NUMBERS: GBNEW165GV-LH – Boom Arm 16.5m LH GVAR



| Pos | Part No | Description | Qty |
|-----|--------------|----------------------|-----|
| 1 | GB201800552V | G-VAR PIVOT ARM RH | 1 |
| 2 | GB201800553V | G-VAR PIVOT ARM LH | 1 |
| 3 | GB201600520V | G-VAR INNER ARM RH | 1 |
| 4 | GB201600521V | G-VAR INNER ARM LH | 1 |
| 5 | GB201600450V | SECOND ARM RH | 1 |
| 6 | GB201600451V | SECOND ARM LH | 1 |
| 7 | GB201600470V | BREAKAWAY ARM RH | 1 |
| 8 | GB201600471V | BREAKAWAY ARM LH | 1 |
| 9 | GB500100055V | PIN | 2 |
| 10 | GB907200010Z | WASHER | 2 |
| 11 | GB900110025Z | SCREW | 2 |
| 12 | GB500400004Z | WASHER | 8 |
| 13 | GB900710025Z | SCREW M10X25 | 8 |
| 14 | GB500100031 | ROD FIRST ARM-PIVOT | 2 |
| 15 | GB919800020 | GREASE NIPPLE | 4 |
| 16 | GBBG007491 | GVAR CYLINDER | 2 |
| 17 | GB998000174 | SEAL KIT | 2 |
| 18 | GB570500006Z | NIPPLE 1/4"BSP 0.6MM | 8 |
| 19 | GB600500001 | COPPER WASHER | 8 |
| 20 | GB271600046V | LEVEL INDICATOR BRKT | 2 |
| 21 | GB271600045V | LEVEL INDICATOR ROD | 2 |
| 22 | GB905100010Z | LOCKING NUT | 4 |
| 23 | GB907010021Z | WASHER | 4 |
| 24 | GB500100023Z | GVAR CYLINDER PIN | 2 |
| 25 | GB905200024Z | NUT M24 | 2 |
| 26 | GB201800540Z | CYLINDER EXT M24 | 2 |
| 27 | GB500400019Z | WASHER | 4 |
| 28 | GB919900040V | GVAR CYL SPRING | 4 |
| 29 | GB201800547Z | BUSHING EXTENSION | 2 |
| 30 | GB500100043Z | GVAR EXTENSION PIN | 2 |
| 31 | GB201800548Z | CYLINDER SPACER | 2 |
| 32 | GB201800545Z | SPRING PLATE | 2 |
| 33 | GB905300012 | NUT | 4 |
| 34 | GB907012025Z | WASHER | 4 |
| 35 | GB905300016 | NUT | 2 |
| 36 | GB907017030Z | WASHER | 2 |
| 37 | GB702545001V | CYLINDER | 2 |
| 38 | GB998000176 | SEAL KIT | 2 |
| 39 | GB500100010Z | PIN | 2 |
| 40 | GB919800021X | CIRCLIP | 4 |
| 41 | GB905200020Z | LOCKING NUT | 2 |
| 42 | GB201200060Z | CYLINDER ROD BLOCK | 2 |
| 43 | GB500100062 | SPACER | 2 |
| 44 | GB900314080Z | BOLT | 2 |
| 45 | GB907014028Z | BUSH | 4 |
| 46 | GB905400014 | NUT NYLOCK | 2 |
| 47 | GB201800050V | LINK ROD | 2 |
| 48 | GB500500014Z | BOLT | 4 |
| 49 | GB905400016 | LOCKING NUT 16MM | 4 |

| Pos | Part No | Description | Qty |
|-----|--------------|--------------------|-----|
| 50 | GB500100085Z | SHAFT BOLT | 2 |
| 51 | GB905400024 | NYLOC NUT 24MM | 2 |
| 52 | GB907302025Z | WASHER | 4 |
| 53 | GB500200049 | BUSH | 2 |
| 54 | GB500100111Z | BREAKAWAY SHAFT | 2 |
| 55 | GB919900023Z | BREAKAWAY SPRING | 2 |
| 56 | GB950130030 | BOOM END CAP | 2 |
| 57 | GB900116050Z | BOLT | 2 |
| 58 | GB905100016Z | NUT | 2 |
| 59 | GB950200001 | BOOM STOP 30MM | 2 |
| 59 | GB950200004 | BOOM STOP 20MM | 4 |
| 60 | GB907110040Z | WASHER | 6 |
| 61 | GB907108024Z | WASHER | 6 |
| 62 | GB905400008 | NUT | 6 |
| 63 | GB202100101V | BOOM GUIDE BOTTOM | 2 |
| 64 | GB500500001Z | U-BOLT LARGE | 2 |
| 65 | GB905400010 | NUT | 4 |
| 66 | GB202100102V | BOOM GUIDE TOP | 2 |
| 67 | GB500500003Z | U-BOLT SMALL | 2 |
| 68 | N/A | | |
| 69 | N/A | | |
| 70 | N/A | | |
| 71 | N/A | | |
| 72 | GB999900100 | BOOM TUBE KIT | 18 |
| 73 | GB201800418V | BOOM TUBE BRACKET | 18 |
| 74 | GB500500004Z | U-BOLT | 18 |
| 75 | GB905300006 | NUT M6 | 16 |
| 76 | A425130 | BOOM CLAMP | 18 |
| 77 | GB904506040X | SCREW M45x6 | 36 |
| 78 | GB905400006X | NUT M6 | 36 |
| 79 | UP-420 | HYD HOSE CLAMP | 10 |
| 80 | GB900106030Z | BOLT M6x45 | 10 |
| 81 | N/A | | |
| 82 | N/A | | |
| 83 | N/A | | |
| 85 | GB550300500 | SPRAY RAIL 3 HOLES | 2 |
| 86 | GB550400500 | SPRAY RAIL 4 HOLES | 2 |
| 87 | GB550200500 | SPRAY RAIL 2 HOLES | 2 |
| 88 | GB550500500 | SPRAY RAIL 5 HOLES | 2 |

NOTE

Parts in italics are non-stock items and may need to be ordered.