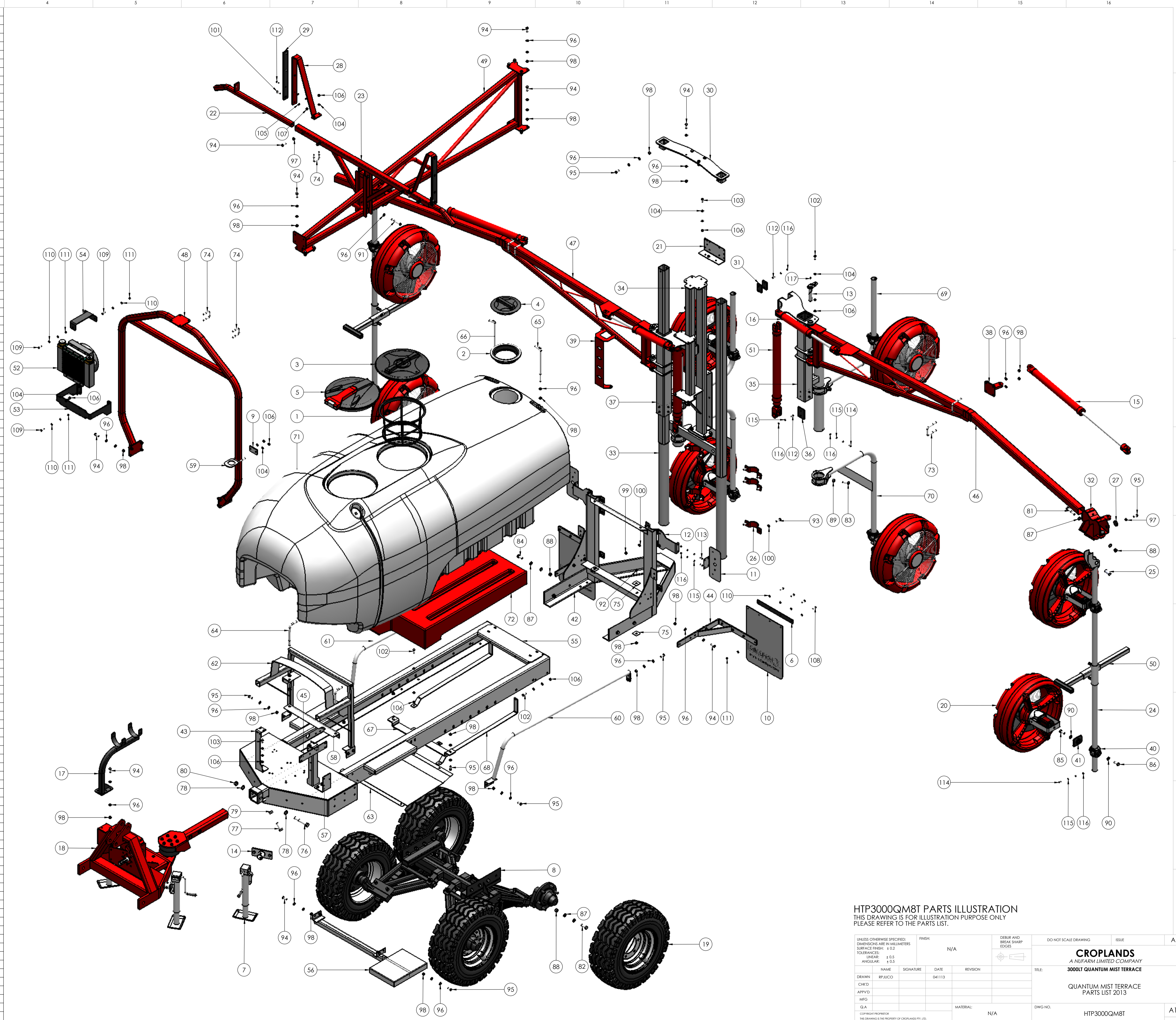


ITEM NO.	PART NUMBER	DESCRIPTION	QTY.
1	A300130	FILTER BASKET LARGE 254MM DEEP	1
2	A350620	LID RING WITH GASKET	1
3	A3510060	LID/RING KIT 455MM	1
4	A3522120	LID ONLY 255MM CLOSED	1
5	A356060	LID HINGED 180 DEGREE 455MM	1
6	BP-180	MUDFLAP PLATE	2
7	BP-184A	JOCKEY STAND SHORT PINTO	3
8	BP-400JLA	SUSPENSION TANDEM 3000LT ANDYS	1
9	BP-541	PLATE FOR 50MM U-BOLT	1
10	BP-542	MUDFLAP WHITE	2
11	BP-635	MOUNT PLATE TAIL LIGHT	2
12	BP-635-1	TAIL LIGHT EXTENSION BRACKET	2
13	BP-700-9AA	PIN 30MM X 155MM HAYLITE	4
14	HP-006	SPIGOT PLATE JACK STAND	1
15	HP-014	HYDRAULIC CYLINDER 2.0 X 24	2
16	HP-016	HYDRAULIC CYLINDER 2.0 X 10	2
17	HP-024-7A	CABLE HOLDER BRACKET SHORT	1
18	HP-024C	SELF STEER DRAWBAR 3PTL 3000/4000LT	1
19	HP-200A	TYRE & WHEEL AWT 10/75-15.3	4
20	HP-219-31A	QM SARDI FAN RP 9.8 MOTOR w/ FLANGE	8
21	HP-229	MANIFOLD BRACKET HP-223C2	1
22	HP-274A-5	PARKING ARM	2
23	HP-274A-5-1	PARKING BRACKET QM	1
24	HP-274A-10	DROPPER ARM OUTER	2
25	HP-274A-11	STEEL BUSH QM	2
26	HP-274A-14	CLAMP HALF SADDLE 90MM	6
27	HP-274A-16A	NYLON BUTTON 50 X 10	8
28	HP-274B-5-2	BOOM STOPPER TERRACE	2
29	HP-274B-5-2-1	NYLON PAD 50 X 10	2
30	HP-274B-7A	TOP BRACKET TERRACE	1
31	HP-274B-10	WEAR PAD 75 X 50 X 10MM	4
32	HP-274B-12B	SWIVEL BRACKET V3 FOR ORORA	2
33	HP-274B-15B	TOWER TERRACE	1
34	HP-274B-15B-1	CENTRE TOWER POST	1
35	HP-274B-16BL	BOOM SLIDE LH TERRACE	1
36	HP-274B-16BL-1	WEAR PAD 75 X 100 X 10	16
37	HP-274B-16BR	BOOM SLIDE RH TERRACE	1
38	HP-274B-18	BRACKET CYLINDER ORORA	2
39	HP-274B-20	LEVEL INDICATOR	1
40	HP-275C	CLAMP CAST QUICK ADJUST	8
41	HP-275C-1	CLAMP PLATE QM500	8
42	HP-283E2	SUB FRAME QM 3000LT VER 2	1
43	HP-286A	BRACKET ECM 3000LT QUANTUM	2
44	HP-288	BRACKET MUDFLAP BP-400D	2
45	HP-289	MANIFOLD BRACKET A463CCRO08A	1
46	HP-274A-2G	BOOM ARM LH QM VER4 3000LT	1
47	HP-274A-3G	BOOM ARM RH QM VER4 3000LT	1
48	HP-274A-4B2	FRONT BRACE QM 3000/4000	1
49	HP-274A-6G	TOP BRACE QM 3000LT	1
50	HP-274A-10-3	QM DROPPER TUBE BUMPER	2
51	HP-298-6	HYDRAULIC CYLINDER 2.5 X 24	2
52	HP-298-15A	OIL COOLER 12V AIR TYPE HYDAC	1
53	HP-298-15A-1	BRACKET OIL COOLER	1
54	HP-298-15A-2	TOP SUPPORT BRACKET OIL COOLER	1
55	HP3000ABA	CHASSIS 3000LT AIRBLAST HAYLITE	1
56	HP-402A	RETRACTABLE STEP 2000LT	1
57	HP-405	BRACKET FILTER SUCTION	1
58	HP-432A	BRAGLIA VALVE BRACKET 3000LT	1
59	HP-434	BRACKET DAM FILL 3000LT	1
60	HP-504LA	SIDE RAIL 3000LT LH	1
61	HP-504RA	SIDE RAIL 3000LT RH	1
62	HP-511	FRONT TANK SUPPORT 3000LT	1
63	HP-512	SUMP GUARD 3000LT	1
64	HP-514	FRONT TIE DOWN ROD 3000LT	2
65	HP-515L	REAR LEFT TIE DOWN ROD 3000LT	1
66	HP-515R	REAR RIGHT TIE DOWN ROD 3000LT LT	1
67	HP-520	CROSS RAIL BRACKET FLUSH TANK	1
68	HP-521	SUPPORT STRAP FLUSH TANK	2
69	HP-820	BRACKET QM HOOK TYPE 600 X 800	2
70	HP-829	BRACKET HOOK TYPE 600MM X 1000MM	2
71	P3000AB-RAW	3000LT TANK POLY AIRBLAST RAW	1
72	P3000AB-11ORAW	FLUSH TANK 110LT 3000LT	1
73	XBMBB65	U-BOLT 65MM X 12	4
74	XBMBB50	U-BOLT 50MM X 10	4
75	S0SQWASHER	50MM SQUARE WASHER	4
76	M20X140BOLT	M20 X 140 HEX HEAD BOLT HT ZP	1
77	M20X60	M20 X 60 SET SCREW HT ZP	2
78	M20FWASHER	M20 FLAT WASHER ZP	2
79	M20HNUT	M20 HALF NUT ZP	2
80	M20NNUT	M20 NYLOC NUT HT ZP	1
81	M16X100BOLT	M16 X 100 BOLT HT ZP	2
82	M16X50	M16 X 50 HEX HEAD SET SCREW HT ZP	8
83	M16X45SS	M16 X 45 S/S HEX HEAD SET SCREW	4
84	M16X40	M16 X 40 HEX HEAD SET SCREW	4
85	M16X40SS	M16 X 40 S/S HEX HEAD SET SCREW	8
86	M16X35SS	M16 X 35 S/S HEX HEAD SET SCREW	8
87	M16FWASHER	M16 FLAT WASHER ZP	30
88	M16NNUT	M16 NYLOC NUT HT ZP	18
89	M16SSHUT	M16 S/S HEX NUT	8
90	M16SSWASHER	M16 S/S SPRING WASHER	16
91	M12X100BOLT	M12 X 100 HEX HEAD BOLT HT ZP	2
92	M12X40	M12 X 40 HEX HEAD SET SCREW HT ZP	2
93	M12X40SS	M12 X 40 SET SCREW S/S HT ZP	12
94	M12X35	M12 X 35 SET SCREW HT ZP	40
95	M12X30	M12 X 30 SET SCREW HT ZP	26
96	M12FWASHER	M12 FLAT WASHER ZP	130
97	M12HNUT	M12 HALF NUT HT ZP	8
98	M12NNUT	M12 NYLOC NUT HT ZP	72
99	M12SSNNUT	M12 S/S NYLOC NUT	12
100	M12SSFWASHER	M12 S/S FLAT WASHER	24
101	M10X35BHScrew	M10 X 35 BUTTON HEAD SCREW S/S	2
102	M10X30	M10 X 30 SET SCREW HT ZP	7
103	M10X25	M10 X 25 SET SCREW HT ZP	8
104	M10FWASHER	M10 FLAT WASHER ZP	40
105	M10SSFWASHER	M10 S/S FLAT WASHER	2
106	M10NNUT	M10 NYLOC NUT HT ZP	25
107	M10SSNNUT	M10 S/S NYLOC NUT	2
108	MBX35	M8 X 35 SET SCREW HT ZP	8
109	MBX30	M8 X 30 SET SCREW HT ZP	5
110	M8FWASHER	M8 FLAT WASHER ZP	26
111	M8NNUT	M8 NYLOC NUT HT ZP	13
112	M6X20CCSCREW	M6X20 C/S HEAD SCREW	50
113	M6X20	M6 X 20 SET SCREW HT ZP	4
114	M6X16	M6 X 16 SET SCREW HT ZP	8
115	M6FWASHER	M6 FLAT WASHER ZP	74
116	M6NNUT	M6 NYLOC NUT HT ZP	62
117	M6GNIPPLE	M6 GREASE NIPPLE	4



**HTP3000QM8T PARTS ILLUSTRATION**  
 THIS DRAWING IS FOR ILLUSTRATION PURPOSE ONLY  
 PLEASE REFER TO THE PARTS LIST.

UNLESS OTHERWISE SPECIFIED: DIMENSIONS ARE IN MILLIMETERS SURFACE FINISH: ± 0.2 TOLERANCES: LINEAR: ± 0.5 ANGULAR: ± 0.5	FRS#: N/A	DEBUR AND BREAK SHARP EDGES	DO NOT SCALE DRAWING	ISSUE
DRAWN: BP/JACO		SIGNATURE:	DATE: 04/11/13	REVISION:
CHKD:	APP'VD:	MFG:	Q.A.:	MATERIAL: N/A
COPYRIGHT PROPRIETOR: THIS DRAWING IS THE PROPERTY OF CROPLANDS PTY. LTD. ALL RIGHTS ARE RESERVED BY CROPLANDS PTY. LTD. CROPLANDS PTY. LTD. IS A COMPANY REGISTERED IN AUSTRALIA. CROPLANDS PTY. LTD. IS A COMPANY REGISTERED IN AUSTRALIA. CROPLANDS PTY. LTD. IS A COMPANY REGISTERED IN AUSTRALIA.			WEIGHT:	SCALE: 1:17.5

**CROPLANDS**  
 A NUFARM LIMITED COMPANY  
**3000LT QUANTUM MIST TERRACE**  
 QUANTUM MIST TERRACE  
 PARTS LIST 2013  
 HTP3000QM8T

WHEEL: SHEET 1 OF 1