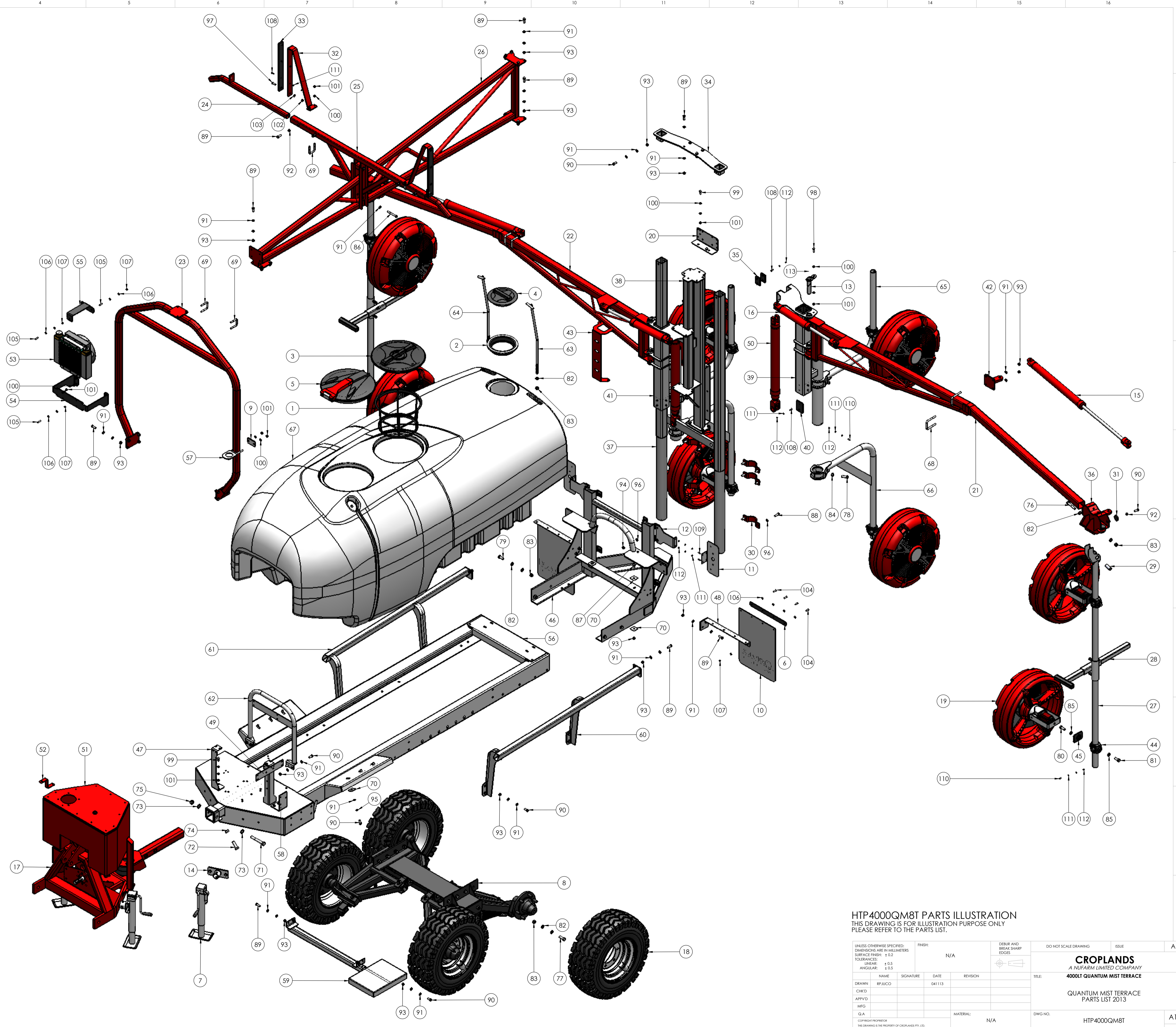


ITEM NO.	PART NUMBER	DESCRIPTION	QTY.
1	A300130	FILTER BASKET LARGE 254MM DEEP	1
2	A350620	LID RING WITH GASKET	1
3	A3510060	LID/RING KIT 455MM	1
4	A3522120	LID ONLY 255MM CLOSED	1
5	A356060	LID HINGED 180 DEGREE 455MM	1
6	BP-180	MUDFLAP PLATE	2
7	BP-184A	JOCKEY STAND SHORT PINTO	3
8	BP-400ADLA	SUSPENSION RANDERM 4000LT ANDYS HUB	1
9	BP-541	PLATE FOR 50MM U-BOLT	1
10	BP-542	MUDFLAP WHITE	2
11	BP-635	MOUNT PLATE TAIL LIGHT	2
12	BP-635-1	TAIL LIGHT EXTENSION BRACKET	2
13	BP-700-9AA	PIN 30MM X 155MM HAYLITE	4
14	HP-006	SPIGOT PLATE JACK STAND	1
15	HP-014	HYDRAULIC CYLINDER 2 X 24	2
16	HP-016	HYDRAULIC CYLINDER 2.0 X 10	2
17	HP-024C	SELF STEER DRAWBAR 3PTL 3000/4000LT	1
18	HP-200A	TYRE & WHEEL AW1 10/75-15.3	4
19	HP-219-31A	QM SARDI FAN RP 9.8 MOTOR w/ FLANGE	8
20	HP-229	MANIFOLD BRACKET HP-223C2	1
21	HP-274A-2G	BOOM ARM LH QM VER4 3000LT	1
22	HP-274A-3G	BOOM ARM RH QM VER4 3000LT	1
23	HP-274A-4B2	FRONT BRACE QM 3000/4000	1
24	HP-274A-5	PARKING ARM	2
25	HP-274A-5-1	PARKING BRACKET QM	1
26	HP-274A-6H	TOP BRACE QM 4000LT	1
27	HP-274A-10	DROPPER ARM OUTER	2
28	HP-274A-10-3	QM DROPPER TUBE BUMPER	2
29	HP-274A-11	STEEL BUSH QM	2
30	HP-274A-14	CLAMP HALF SADDLE 90MM	6
31	HP-274A-16A	NYLON BUTTON 50 X 10	8
32	HP-274B-5-2	BOOM STOPPER TERRACE	2
33	HP-274B-5-2-1	NYLON PAD 50 X 10	2
34	HP-274B-7A	TOP BRACE TERRACE	1
35	HP-274B-10	WEAR PAD 75 X 50 X 10MM	4
36	HP-274B-12B	SWIVEL BRACKET V3 FOR ORORA	2
37	HP-274B-15B	TOWER TERRACE	1
38	HP-274B-15B-1	CENTRE TOWER POST	1
39	HP-274B-16BL	BOOM SLIDE LH TERRACE	1
40	HP-274B-16BL-1	WEAR PAD 75 X 100 X 10	16
41	HP-274B-16BR	BOOM SLIDE RH TERRACE	1
42	HP-274B-18	BRACKET CYLINDER ORORA	2
43	HP-274B-20	LEVEL INDICATOR	1
44	HP-275C	CLAMP CAST QUICK ADJUST	8
45	HP-275C-1	CLAMP PLATE QM500	8
46	HP-283D	SUB FRAME QM 4000LT	1
47	HP-286A	BRACKET ECM 3000LT QUANTUM	2
48	HP-288A	BRACKET MUDFLAP BP-400AD	2
49	HP-289	MANIFOLD BRACKET A463CCRO08A	1
50	HP-298-6	HYDRAULIC CYLINDER 2.5 X 24	2
51	HP-298-11B	HYDRAULIC TANK DRAWBAR BOLT ON	1
52	HP-298-13A-1	GAUGE BRACKET HYDPACK3	1
53	HP-298-15A	OIL COOLER 12V AIR TYPE HYDAC	1
54	HP-298-15A-1	BRACKET OIL COOLER	1
55	HP-298-15A-2	TOP SUPPORT COOLER OIL COOLER	1
56	HP4000ABA	CHASSIS 4000LT AIRBLAST HAYLITE	1
57	HP-434	BRACKET DAM FILL 3000LT	1
58	HP-405	BRACKET FILTER SUCTION	1
59	HP-702A	STEP, RETRACTABLE 4000LT	1
60	HP-704LA	SIDE RAIL L.H. 4000LT HAYLITE	1
61	HP-704RA	SIDE RAIL RH 4000LT HAYLITE	1
62	HP-711A	FRONT TANK SUPPORT 4000LT	1
63	HP-715L	TIE DOWN ROD L.H. 4000LT	1
64	HP-715R	TIE DOWN ROD R.H. 4000LT	1
65	HP-820	BRACKET QM HOOK TYPE 600 X 800	2
66	HP-829	BRACKET HOOK TYPE 600MM X 1000MM	2
67	P4000AB-RAW	4000LT TANK POLY AIRBLAST RAW	1
68	XBMBB65	U-BOLT 65MM X 12	4
69	XBMBB50	U-BOLT 50MM X 10	4
70	S05QWASHER	50MM SQUARE WASHER	10
71	M20X140BOLT	M20 X 140 HEX HEAD BOLT HT ZP	1
72	M20X60	M20 X 60 SET SCREW HT ZP	2
73	M20FWASHER	M20 FLAT WASHER ZP	2
74	M20HNUT	M20 HALF NUT ZP	2
75	M20NNUT	M20 NYLOC NUT HT ZP	1
76	M16X100BOLT	M16 X 100 BOLT HT ZP	2
77	M16X50	M16 X 50 HEX HEAD SET SCREW HT ZP	8
78	M16X45SS	M16 X 45 S/S HEX HEAD SET SCREW	8
79	M16X40	M16 X 40 HEX HEAD SET SCREW	4
80	M16X40SS	M16 X 40 S/S HEX HEAD SET SCREW	8
81	M16X35SS	M16 X 35 S/S HEX HEAD SET SCREW	8
82	M16FWASHER	M16 FLAT WASHER ZP	30
83	M16NNUT	M16 NYLOC NUT HT ZP	16
84	M16SSHNUT	M16 S/S HEX NUT	8
85	M16SSWASHER	M16 S/S SPRING WASHER	16
86	M12X100BOLT	M12 X 100 HEX HEAD BOLT HT ZP	2
87	M12X40	M12 X 40 HEX HEAD SET SCREW HT ZP	2
88	M12X40SS	M12 X 40 SET SCREW S/S HT ZP	12
89	M12X35	M12 X 35 SET SCREW HT ZP	42
90	M12X30	M12 X 30 SET SCREW HT ZP	28
91	M12FWASHER	M12 FLAT WASHER ZP	130
92	M12HNUT	M12 HEX NUT HT ZP	8
93	M12NNUT	M12 NYLOC NUT HT ZP	68
94	M12SSNNUT	M12 S/S NYLOC NUT	12
95	M12SWASHER	M12 SPRING WASHER ZP	6
96	M12SSFWASHER	M12 S/S FLAT WASHER	24
97	M10X35BHSCREW	M10 X 35 BUTTON HEAD SCREW S/S	2
98	M10X30	M10 X 30 SET SCREW HT ZP	4
99	M10X25	M10 X 25 SET SCREW HT ZP	8
100	M10FWASHER	M10 FLAT WASHER ZP	34
101	M10NNUT	M10 NYLOC NUT HT ZP	22
102	M10SSNNUT	M10 S/S NYLOC NUT	2
103	M10SSFWASHER	M10 S/S FLAT WASHER	2
104	M8X35	M8 X 35 SET SCREW HT ZP	8
105	M8X30	M8 X 30 SET SCREW HT ZP	5
106	M8FWASHER	M8 FLAT WASHER ZP	26
107	M8NNUT	M8 NYLOC NUT HT ZP	13
108	M6X20CSSCREW	M6X20 C/S HEAD SCREW	50
109	M6X20	M6 X 25 SET SCREW HT ZP	4
110	M6X16	M6 X 16 SET SCREW HT ZP	8
111	M6FWASHER	M6 FLAT WASHER ZP	74
112	M6NNUT	M6 NYLOC NUT HT ZP	62
113	M6GNIPPLE	M6 GREASE NIPPLE	4



HTP4000QM8T PARTS ILLUSTRATION
 THIS DRAWING IS FOR ILLUSTRATION PURPOSE ONLY
 PLEASE REFER TO THE PARTS LIST.

UNLESS OTHERWISE SPECIFIED: DIMENSIONS ARE IN MILLIMETERS SURFACE FINISH: 1.02 TOLERANCES: LINEAR: ±0.5 ANGULAR: ±0.5		FINISH: N/A		DEBUR AND BREAK SHARP EDGES		DO NOT SCALE DRAWING		ISSUE	
DRAWN: RP/JUCO		SIGNATURE:		DATE: 04/11/13		REVISION:		TITLE: CROPLANDS A NUFARM LIMITED COMPANY 4000LT QUANTUM MIST TERRACE	
CHKD:		APP'VD:		MFG:		Q.A.:		MATERIAL: N/A	
G.A.:		MATERIAL:		DWG NO.:		SCALE: 1:17.5		SHEET 1 OF 1	
COPYRIGHT PROPRIETOR: NUFARM LIMITED 115 WILSON STREET, WILSON, VIC 3083 ALL RIGHTS RESERVED. THIS DOCUMENT IS THE PROPERTY OF NUFARM LIMITED AND IS TO BE KEPT CONFIDENTIAL. UNLESS OTHERWISE STATED, ALL DIMENSIONS ARE IN MILLIMETERS. ORIGINATOR: NUFARM LIMITED. CONTROLLED DOCUMENT. UNLESS OTHERWISE STATED, ALL DIMENSIONS ARE IN MILLIMETERS.		WEIGHT:		SCALE: 1:17.5		SHEET 1 OF 1		A1	