

KIT AIRASSISTED "NEW AIR" x TRAINATI.

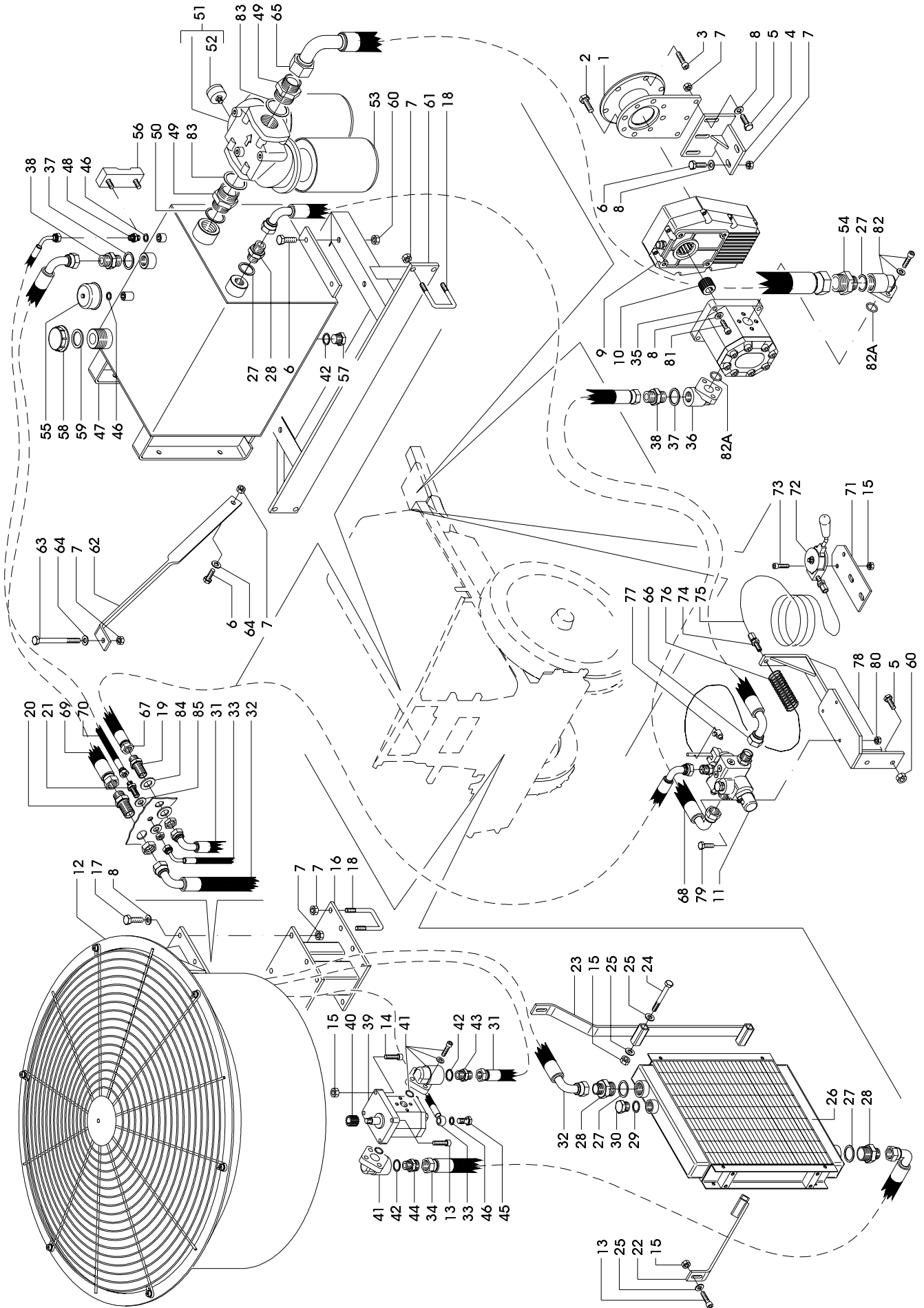
"NEW AIR" AIRASSISTED KIT FOR TRAILED SPRAYERS.

"NEW AIR" KIT AIRASSISTED POUR TRAIINE.

"NEW AIR" LUFTUNTERSTUTZUNG FUER ANHAENGESPRITZEN.

GAMBETTI BARRE

Tav. N 68 60



KIT AIRASSISTED "NEW AIR" x TRAINATI.
"NEW AIR" AIRASSISTED KIT FOR TRAILED SPRAYERS.
"NEW AIR" KIT AIRASSISTED POUR TRAIINE.
"NEW AIR" LUFTUNTERSTUTZUNG FUER ANHAENGESPRITZEN.

GAMBETTI BARRE

Tav. N 68 60

Pos.	Codice code	Descrizione	N. pz.	Description	Désignation	Benennung
1	750500021V	FLANGIA POMPA	1	FLANGE	BRIDE	FLANSCH
2	900112025Z	VITE M12x25 UNI 5739	4	SCREW	VIS	SCHRAUBE
3	900510035Z	VITE M10X35 UNI 5931	6	SCREW	VIS	SCHRAUBE
4	501100062V	SUPPORTO MOLTIPLICATORE	1	SUPPORT	SUPPORT	HALTERUNG
5	900110030Z	VITE M10 X 30 UNI 5739	5	SCREW	VIS	SCHRAUBE
6	900110025Z	VITE M10 X 25 UNI 5739	7	SCREW	VIS	SCHRAUBE
7	905300010	DADO M10 UNI 7473	25	SELF-LOCKING NUT	ECROU AUTOBLOQUANT	SELBSTSPERR.-MUTTER
8	907010021Z	RONDELLA 10x21 UNI 6592	15	WASHER	RONDELLE	SCHEIBE
9	750400073	MOLTIPLICATORE	1	OVERDRIVE	SURMULTIPLIFICATEUR	DREHMOMENTUERSTARKER
10	750400075	SEMIGIUNTO DENTATO	1	HALF-COUPLING	DEMI-JOINT	HALBELENK
11	997520131	DISTRIBUTORE COMPLETO	1	CONTROL VALVE	DISTRIBUTEUR	STEVERBLOCK
12	680100097	GRUPPO VENTOLA	1	BLOWER	SOUFFLERIE	GEBLÄSE
13	900508030Z	VITE M8X30 UNI 5931	4	SCREW	CIS	SCHRAUBE
14	900508040Z	VITE M8x40 UNI 5931	2	SCREW	VIS	SCHRAUBE
15	905400008	DADO M8 UNI 7474	9	SELF-LOCKING NUT	ECROU AUTOBLOQUANT	SELBSTSPERR.-MUTTER
16	307000090V	SUPPORTO VENTOLA	1	SUPPORT	SUPPORT	HALTERUNG
17	900110035Z	VITE M10X35 UNI 5739	6	SCREW	VIS	SCHRAUBE
18	500500002Z	CAVALLOTTO Q.50	6	RETAINER	BRIDE	KLEMME
19	750400080	GIUNZ. PASSAPARETE M-M 1/	1	NIPPLE	RACCORD	VERBINDUNG
20	750400025	GIUNZ. PASSAPARETE M-M 3/	1	NIPPLE	RACCORD	VERBINDUNG
21	750400081	GIUNZ. PASSAPARETE M-M 1/	1	NIPPLE	RACCORD	VERBINDUNG
22	501100068V	SUPPORTO ANT. RADIATORE	1	SUPPORT	SUPPORT	ANTERUNG
23	501100069V	SUPPORTO POST. RADIATORE	1	SUPPORT	SUPPORT	HALTERUNG
24	900308075Z	VITE M8 X 75 UNI 5737	3	SCREW	VIS	SCHRAUBE
25	907008017Z	RONDELLA 8 X 17 UNI 6592	8	WASHER	RONDELLE	SCHEIBE
26	680100087	RADIATORE	1	RADIATOR	RADIATEUR	KUHLER
27	600500006	GUARNIZIONE RAME 1"	4	SEAL	JOINT	KUPFER-DICHTUNG
28	740000018Z	RIDUZ. IDR. M1"-M3/4"	3	NIPPLE	RACCORD	NIPPEL
29	600500004	GUARNIZIONE RAME 22x1,5	1	SEAL	JOINT	KUPFER-DICHTUNG
30	740000078Z	TAPPO M22x1,5	1	PLUG	BOUCHON	STOPFEN
31	765640800	TUBO R2 1/2" FD-F90	1	HOSE R2 1/2" FD-F90	TUYAU R2 1/2" FD-F90	SCHLAUCH R2 1/2" FD-F90
32	763880750	TUBO R1 3/4" F90-F90	1	HOSE R1 3/4" F90-F90	TUYAU R1 3/4" F90-F90	SCHLAUCH R1 3/4" F90-F90
33	767250450	TUBO R7 1/4" FD-OCCH.	1	HOSE R7 1/4"	TUYAU R7 1/4"	SCHLAUCH R7 1/4"
34	763890750	TUBO R1 3/4" FD-F90	1	HOSE R1 3/4" FD-F90	TUYAU R1 3/4" FD-F90	SCHLAUCH R1 3/4" FD-F90
35	750400092	POMPA	1	PUMP	PUMPE	PUMP
36	750400027	RACCORDO POMPA F3/4"	1	FITTING	RACCORD	SCHLAUCHTÜLLE
37	600500003	GUARNIZIONE RAME 3/4"	2	SEAL	JOINT	KUPFER-DICHTUNG
38	740000005Z	NIPLES M-M 3/4"	2	NIPPLE	RACCORD	NIPPEL
39	750400097	MOTORE IDRAULICO	1	ENGINE	MOTEUR	MOTOR
40	750400074	SEMIGIUNTO DENTATO	1	HALF COUPLING	DEMI-JOINT	HALBEGELENK
41	750400033	RACCORDO POMPA F1/2"	2	FITTING	RACCORD	SCHLAUCHTÜLLE
42	600500005	GUARNIZIONE RAME 1/2"	3	SEAL	JOINT	KUPFER-DICHTUNG
43	740000150Z	NIPLES M-M 1/2"	1	NIPPLE	RACCORD	NIPPEL
44	740000009Z	RIDUZ. IDR. M3/4"-M1/2"	1	NIPPLE	REDUCTION	REDUZIERSTÜCK
45	570100031Z	VITE FORATA G1/4	1	SCREW	VIS	SCHRAUBE
46	600500001	GUARNIZIONE RAME 1/4"	4	SEAL	JOINT	KUPFER-DICHTUNG
47	750100001V	SERBATOIO OLIO IDR. 45 LT	1	TANK	RESERVOIR	TANK
48	740000013Z	NIPLES M-M 1/4"	1	NIPPLE	RACCORD	NIPPEL
49	740000121Z	RIDUZ. IDR. M1"1/2"-M1"1/4	2	NIPPLE	REDUCTION	REDUZIERSTÜCK
50	600500007	GUARNIZIONE RAME 1"1/4	1	SEAL	JOINT	KUPFER-DICHTUNG
51	750400082	TESTATA FILTRO	1	HEAD	TETE	KOPF
52	750400037	VUOTOMETRO	1	VACUUM GAUGE	VIDOMETRE	VAKUUMMETER
53	750400086	CARTUCCIA FILTRO	2	CARTRIDGE	CARTOUCHE	PATRONE