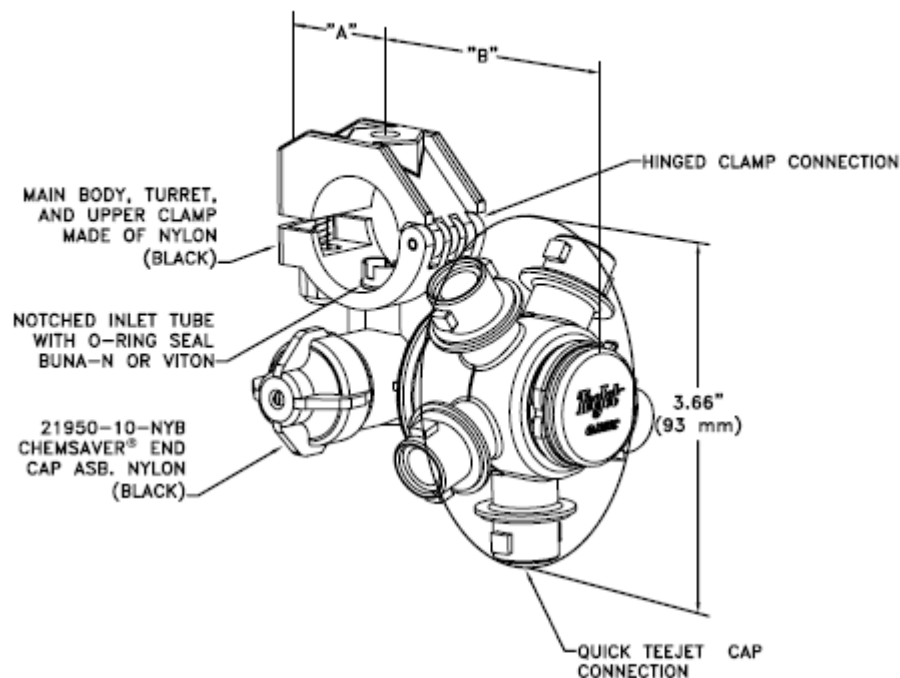


CROPLANDS PART NUMBERS: QJ363C-3/4-NYB – TEEJET 3/4" TRIPLE NOZZLE BODY WINDMALL VERSION



TO INSTALL ASSEMBLY DRILL 3/8" (9.5 mm) DIAMETER HOLE IN PIPE, DEBURR, THEN INSERT NOZZLE BODY INLET AND CLAMP ASSEMBLY IN PLACE.

| PART NO. | NUMBER OF OUTLETS | TO CLAMP ON | "A" | "B" |
|-----------------|-------------------|------------------|------------------|------------------|
| QJ36*C-1-NYB | 3, 4, OR 5 | 1" PIPE | 1.24" (32 mm) | 3.20" (81 mm) |
| QJ36*C-3/4-NYB | 3, 4, OR 5 | 3/4" PIPE | 1.07" (27 mm) | 3.05" (77 mm) |
| QJ36*C-1/2-NYB | 3, 4, OR 5 | 1/2" PIPE | 1.10" (28 mm) | 3.20" (81 mm) |
| QJ36*C-25mm-NYB | 3, 4, OR 5 | 25mm O.D. Tubing | 1.07" (27 mm) | 3.05" (77 mm) |

Note: All dimensions are approximate.

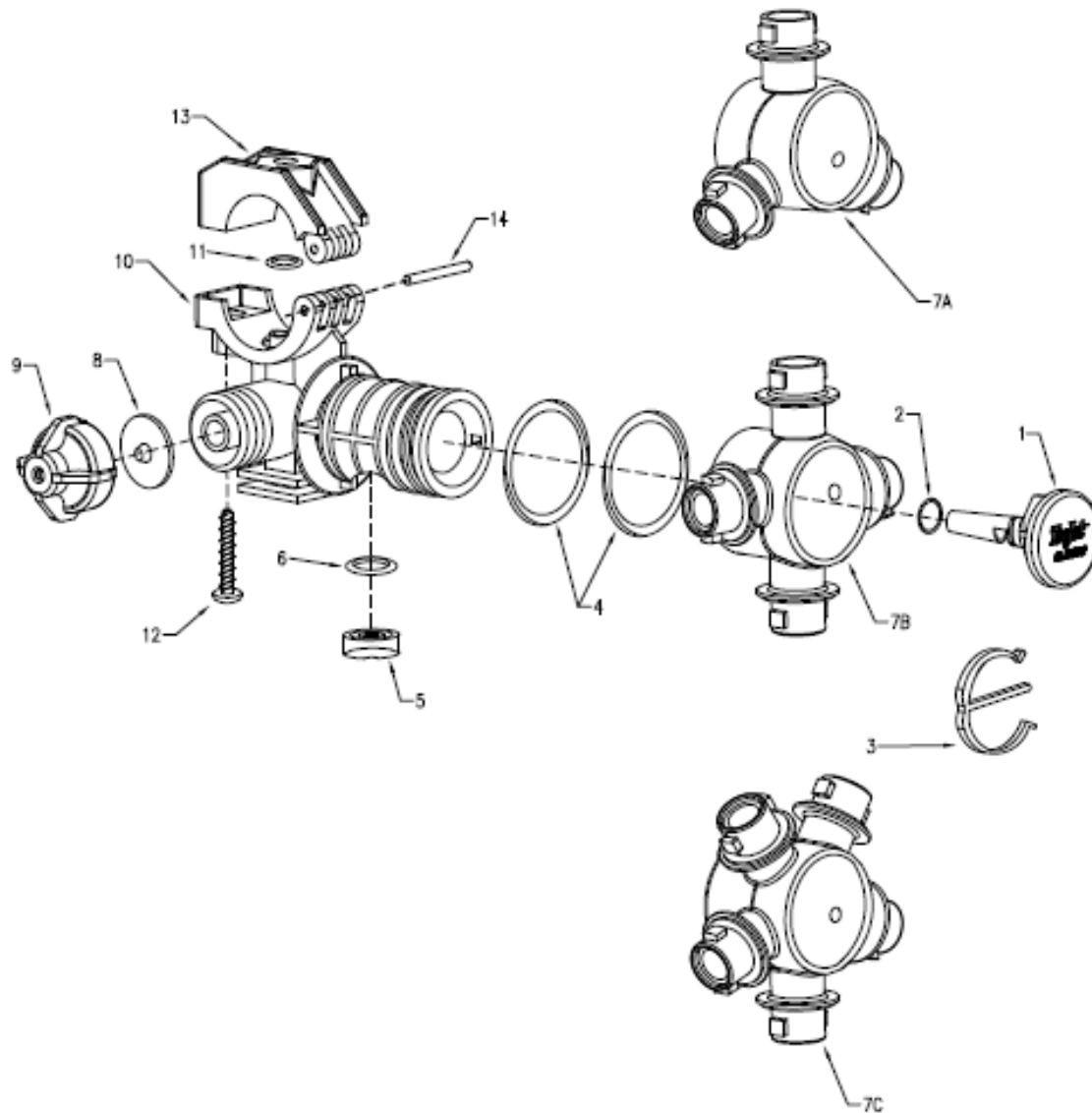
FEATURES:

- QUICK HAND INDEXING WITH CHOICE OF THREE, FOUR, OR FIVE OUTLET TURRET.
- HINGED UPPER CLAMP AND SINGLE SCREW REDUCES ASSEMBLY TIME.
- ALLOWS FOR RAPID CHANGE OF SPRAY TIPS WITH USE OF QUICK TEEJET CAPS.
- POSITIVE SHUT-OFF BETWEEN EACH SPRAY POSITION.
- NOTCHED INLET TUBE ALLOWS FOR MORE COMPLETE BOOM DRAINAGE AND REDUCES SEDIMENT BUILDUP.
- MADE OF CORROSION RESISTANT MATERIALS.
- STANDARD O-RINGS AND DIAPHRAGM MADE OF EPDM, TEFLON FILLED EPDM, AND BUNA-N.
- OPTIONAL O-RINGS AND DIAPHRAGM MADE OF VITON AND TEFLON FILLED VITON.
- STANDARD OPENING PRESSURE – 10 PSI (0.7 bar)
- MAXIMUM OPERATING PRESSURE – 300 PSI (20 bar).
- FLOW RATE: 2.25 GPM (8.5 l/min) WITH A 5 PSI PRESSURE DROP
- AVAILABLE FOR 25mm TUBING; 1/2", 3/4", AND 1" PIPE.
- HEX SOCKET IN CENTER OF UPPER CLAMP PERMITS ATTACHMENT TO FLAT SURFACE USING CUSTOMER SUPPLIED FASTENER.
- IF TURRET BECOMES DIFFICULT TO TURN REMOVE E-CLIP, SLIDE TURRET OFF BODY, AND LUBRICATE O-RINGS AND SEAL WITH A SILICONE BASED LUBRICANT.
- CLAMP ASSEMBLY WILL FIT INSIDE COMMON CHANNELS USED FOR SPRAY BOOMS.
- FOR 20mm VERSION, SEE DATA SHEET QJ360E.

HOW TO ORDER:

QJ365C-1-NYB QUICK TEEJET NOZZLE BODY ASSEMBLY

QJ365C-1-NYB-VI QUICK TEEJET NOZZLE BODY ASSEMBLY
(VITON DIAPHRAGM AND O-RINGS)



| ITEM | PART NO. | DESCRIPTION |
|---|---------------------|---|
| 1 | CP38930-8-NYB | Plug, Nylon (Black) |
| 2 | CP7717-2-13-EPR | O-Ring, EPDM |
| | CP7717-2-13-VI | O-Ring, Viton (Optional) |
| 3 | CP38931-NYB | E-Clip, Nylon (Black) |
| 4 | CP7717-M28x3-EPRTFE | O-Ring, EPR-Teflon Filled (2 Req'd.) |
| | CP7717-M28x3-VITFE | O-Ring, Viton-Teflon Filled (2 Req'd.) (Optional) |
| 5 | CP56726-VITFE | Seal, Viton-Teflon Filled |
| 6 | CP7717-2-111-VI | O-Ring, Viton |
| 7A | CP38921-2-NYB | Turret, Nylon (Black) (3 Outlet) |
| 7B | CP38922-2-NYB | Turret, Nylon (Black) (4 Outlet) |
| 7C | CP38923-2-NYB | Turret, Nylon (Black) (5 Outlet) |
| 8 | CP21953-EPR | Diaphragm, EPDM |
| | CP21953-VI | Diaphragm, Viton (Optional) |
| 9 | 21950-10-NYB | End Cap Sub-assembly, Nylon (Black) |
| 10 | CP38942-2-NYB | 1/2" Body, Nylon (Black) |
| | CP38925-2-NYB | 3/4" & 25mm Body, Nylon (Black) |
| | CP38926-2-NYB | 1" Body, Nylon (Black) |
| 11 | CP7717-2-110-BU | O-Ring, Buna-N |
| | CP7717-2-110-VI | O-Ring, Viton (Optional) |
| 12 | CP48255-1-1/4-302SS | Screw, Stainless Steel |
| 13 | CP48223-NYB | 1/2" Upper Clamp, Nylon (Black) |
| | CP48221-NYB | 3/4" Upper Clamp, Nylon (Black) |
| | CP48222-NYB | 1" Upper Clamp, Nylon (Black) |
| | CP48224-NYB | 25mm Upper Clamp, Nylon (Black) |
| 14 | CP48256-SS | Pivot Pin, Stainless Steel |
| | | No. QJ36_C-1/2-NYB(-VI) - 1/2" Wet Boom Nozzle Body* |
| | | No. QJ36_C-3/4-NYB(-VI) - 3/4" Wet Boom Nozzle Body* |
| | | No. QJ36_C-1-NYB(-VI) - 1" Wet Boom Nozzle Body* |
| | | No. QJ36_C-25MM-NYB(-VI) - 25mm Wet Boom Nozzle Body* |
| *Notes: Specify Either 3, 4, or 5 in Part Number For Number of Outlets Desired, -VI in Part Number Specifies Viton O-Ring Option | | |