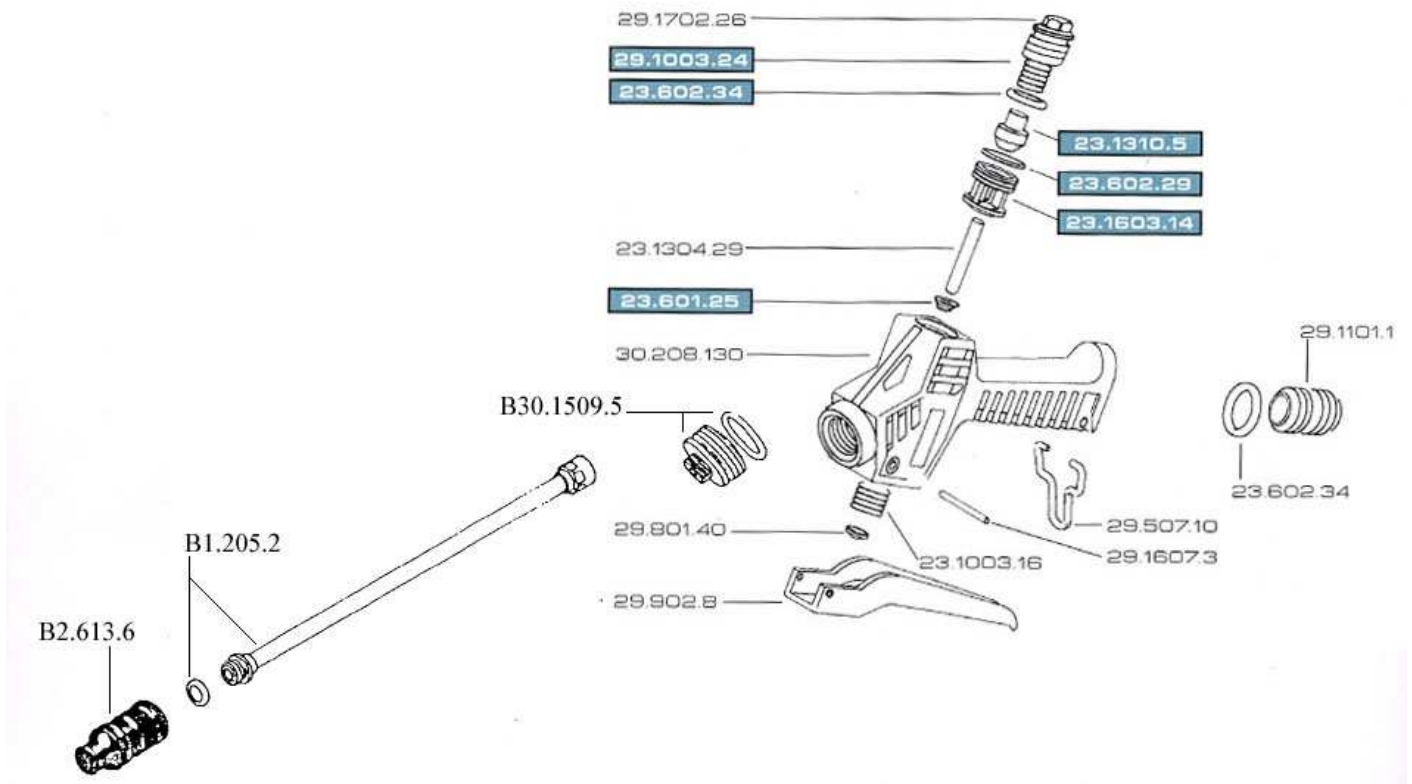


## RL10



The most popular lance, suitable for pressures up to 20 bar. 500mm stainless steel lance with brass fittings. Fitted with a brass adjustable nozzle sturdy handle and trigger with latch.

Maximum Pressure:		20 bar / 300 psi
Weight:		315g
Length:	With Lance	720 mm
	No Lance	240 mm
	Lance Only	500 mm



A valve kit for the RL10 spray gun is available under the following part number **B23.302.12**  
 A complete repair kit for the spray gun is also available under the following part number **B30.302.25**.