

SHURflo



PRODUCT DATA SHEET MODEL: 8000-547-189

INTERNAL BY-PASS

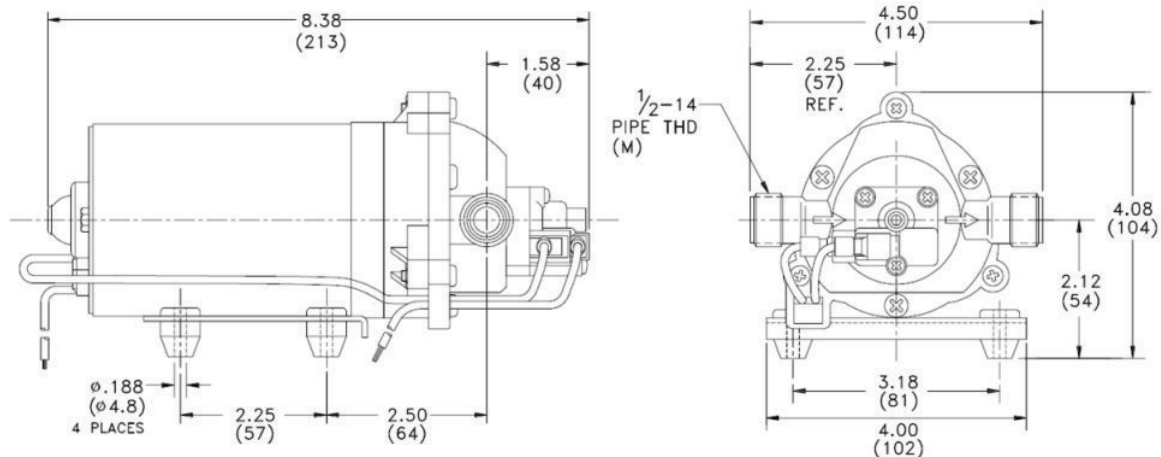
SPECIFICATIONS:

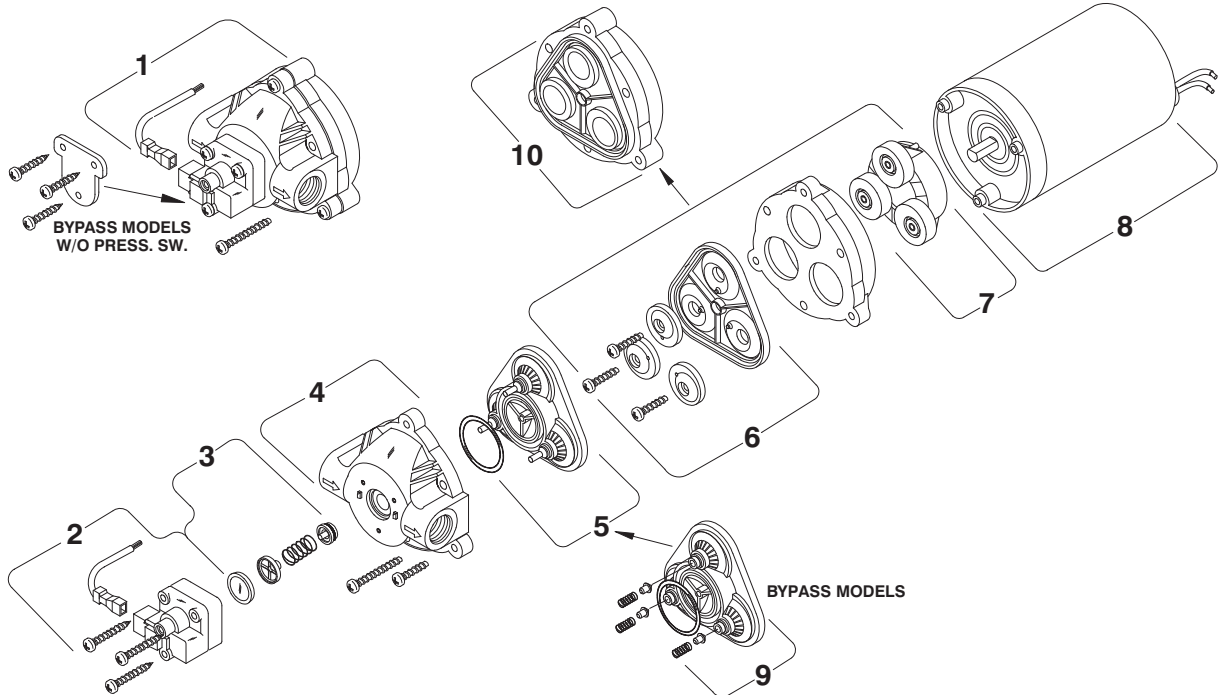
MODEL NUMBER:	8000-547-189
PUMP DESIGN:	Positive Displacement 3 Chamber Diaphragm Pump
CHECK VALVE:	(1 – Way Operation) Prevents Reverse Flow
CAM:	3.0 Degree
MOTOR:	Permanent Magnet, P/N 11-111-00
VOLTAGE:	12 VDC Nominal
PRESSURE SWITCH:	Adjustable Shut – Off (Range 80-100 PSI) Factory Set @ 107 PSI, Turn on 85 PSI ± 5 PSI
LIQUID TEMPERATURE:	170 Degrees Fahrenheit (77 Degrees Centigrade) Max.
PRIME:	Self - Priming Up To 10 Ft. Vertical, Max. Inlet Pressure 30 PSI (2.1 Bar)
PORTS:	3/8"-18 NPT Female
MATERIAL OF CONSTRUCTION:	
PLASTICS –	Polypropylene
VALVES –	Viton
DIAPHRAGM –	Santoprene®
FASTENERS –	Zinc Plated Steel
NET WEIGHT:	4.7 Lbs (2.13 Kg)
DUTY CYCLE:	Intermittent (See Temperature Rise Chart)
TYPICAL APPLICATIONS:	Agricultural Spot Spraying with adjustable spray nozzles

PERFORMANCE:

	MAX	SHUTOFF	SHUTOFF DIFF.
	1.8 GPM	107 PSI	15-35 PSI
	6.8 lpm	7.4 Bar	1 - 2.4 Bar

DIMENSIONS:




DESCRIPTION
PART No.

1) Complete Pump Head	N/A
2) Switch Assembly	94-229-08
3) Check Valve Assembly	94-374-08
4) Upper Housing	94-378-00
5) Valve Assembly (Standard)	N/A
6) Diaphragm	N/A
7) Drive Assembly	N/A
8) Motor	94-11-111-00
9) Valve Assembly (Bypass)	94-391-46
10) Solid Diaphragm/Drive Assembly	94-385-32

NOTE

SOME PARTS ARE NON-STOCK ITEMS AND MAY NEED TO BE ORDERED

NOTE

PLEASE ADD PREFIX **SHU** TO PART NUMBER TO REFLECT CROPLANDS PART NUMBER

Revision date: Feb. 2013

Head Office

Pentair AU/NZ: 1-21 Monash Drive,
Dandenong South, Vic 3175

Australia
National Customer Service:

Phone: 1300 137 344

Fax: 1800 006 688

National Dealer Locator:

Phone: 1800 664 266

Email: au.sales@pentair.com

Web: www.pentair.com.au

New Zealand
National Customer Service:

Phone: 0800654112

Fax: 0800 806 642

National Dealer Locator:

Phone: 0800 664269

Email: nz.sales@pentair.com

Web: www.pentair.co.nz

International Australia/New Zealand

Phone: +61 3 9709 5800

Fax: +61 3 9709 5888

© Information contained here-in remains the property of Pentair Water Pty Ltd. Any reproduction, display, publication, modification or distribution is strictly prohibited without the prior written permission of Pentair Water Pty Ltd.

Disclaimer: Every endeavour has been made to publish the correct details in this data sheet.

No responsibility will be taken for errors, omissions or changes in product specifications.

Pentair reserves the right to change specifications