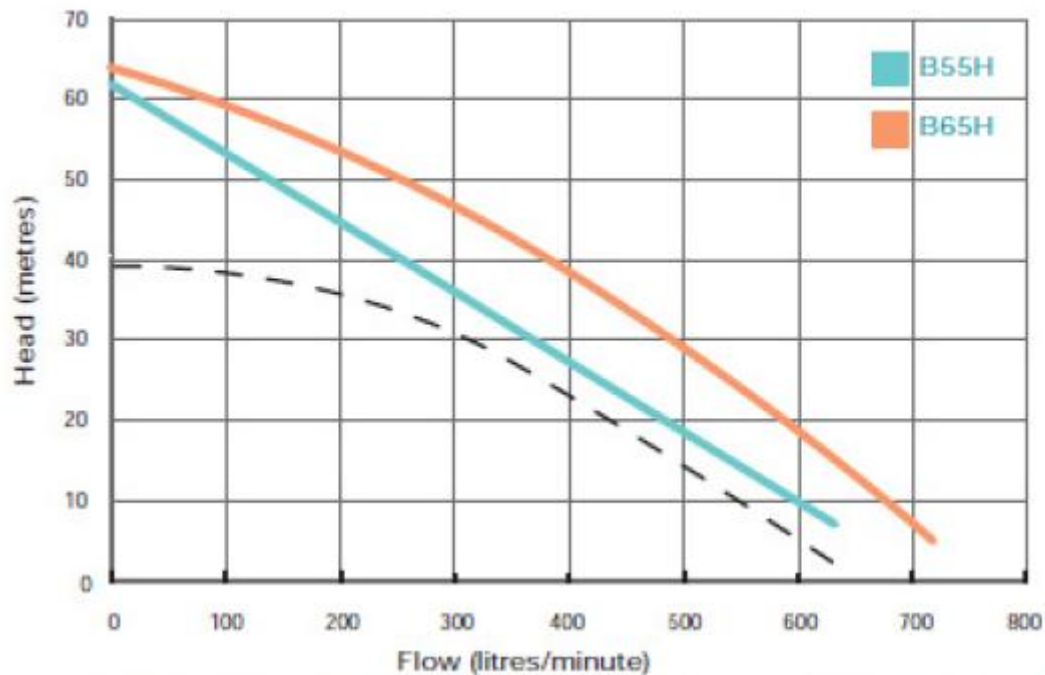


CROPLANDS PART NUMBERS: SHUB55H – ONGA FIREFIGHTER HONDA GX160

Pump Model	Hp Nominal	Engine Model	Suction (BSP) Male	3 Way Discharge (BSP) Male	Drain Plug (BSP) Male	Shaft Thread	Volume Fuel Tank	Fuel Type
B55H	5.5	Honda GX160	1.5"	1",1",1.5"	1/4	5/8" UNF	2.5 Litres	Petrol

Blazemaster Single Performance (Petrol engines)

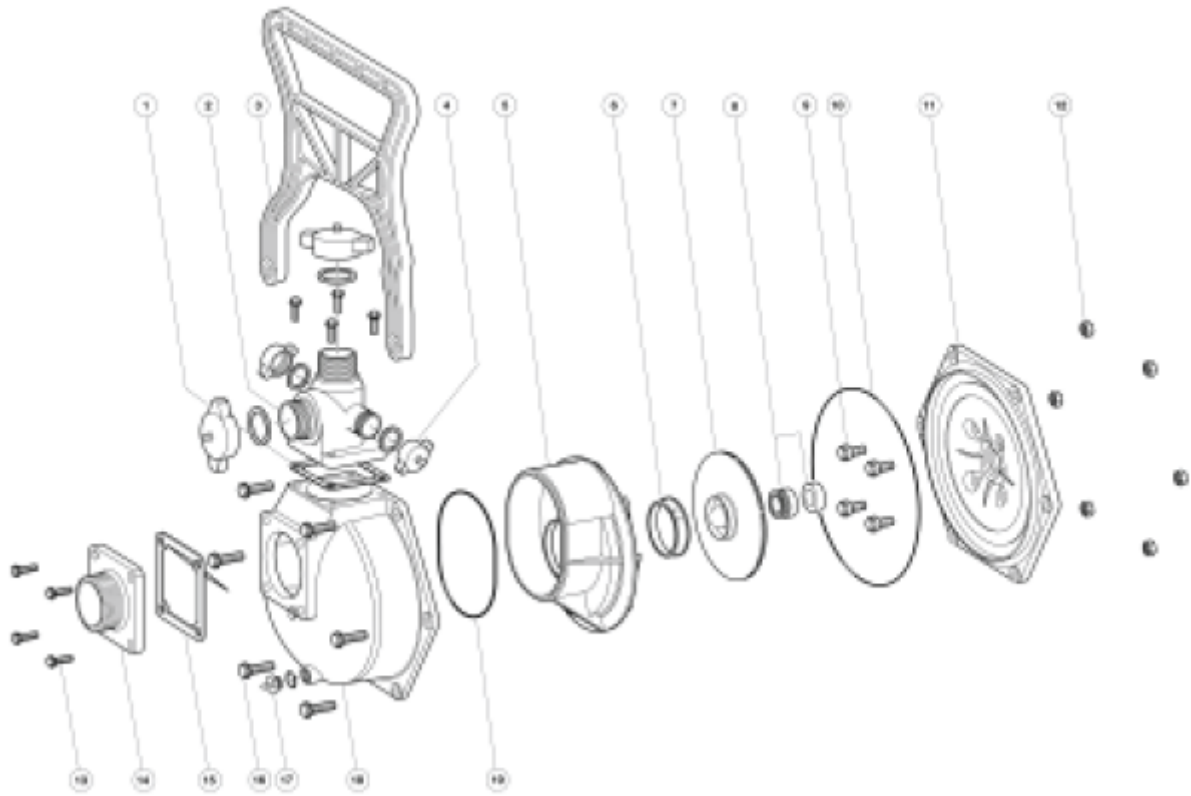


TECHNICAL DATA

Priming Port:	2" BSP
Max Working Pressure	1300 kpa
Water temp range	5°C – 40°C
Max amb temperature	40°C as per engine manufacturer's data

OPTIONAL ACCESSORIES

- Rollover Frames
 - Part Number 411010 [up to 9HP Petrol]
 - Part Number 411020 [9HP +, and diesel]
- Suction Strainer
 - Part Number 503271
- Ball Valves
 - 1" BSP Part Number 703033
 - 1 1/2" BSP Part Number 703031
 - 2" BSP Part Number 703030
- Fire Fighting Kits Part Number 701124 *comprising*
 - 1 X 4 metre grey PVC Suction Hose 38mm I.D,
 - 2 X 6 metre Yellow PVC Delivery Hose 20mm I.D,
 - 2 X Adjustable Fire Nozzles,
 - Brass Nuts & Tails
 - Suction Strainer PVC
 - Stainless Steel Hose Clamps.



Item	Description	Qty	Item	Description	Qty
1	Gasket - Discharge	1	10	O'ring - Casing	1
2	Flange - Discharge 1½" BSP	1	11	Yoke ¾" Blazemaster	1
	Flange - Discharge 2" BSP	1		Yoke 1" Blazemaster	1
3	Handle	1	12	Nuts - Casing (Set/12)	6
4	Cap & Washer 2" BSP	As Required		Nut - Bush 3/8" (Handle)	2
	Cap & Washer 1.5"BSP	As Required	13	Screw (Set/8) M8	8
	Cap & Washer 1"BSP	2	14	Flange - Suction 1 1/2" BSP	1
5	Diffuser	1		Flange - Suction 2" BSP	1
6	Wear Ring	1	15	Gasket - Clacker Assy	1
7	Impeller - ¾" Shaft	1	16	Bolts Casing	6 (4 if handle)
	Impeller - 5/8" Shaft	1		Bolts Casing	2
	Impeller - 1" Shaft	1	17	Plug ¼" Drain (Including Oring)	1
8	Seal - Mechanical ¾"	1	18	Casing	1
	Seal - Mechanical 1"	1	19	O'ring Difuser	1
	Spacer - Yoke Bolt (Not Shown)	4	NS	Strap - Cap (Triple)	1
9	Bolt & Seal Kit (Set/12)	4	NS	Anti Vibration Feet (Set/2)	1
	Bolt & Seal Kit (Set/12) B48Y Only	4	NS	Bracket Support	1