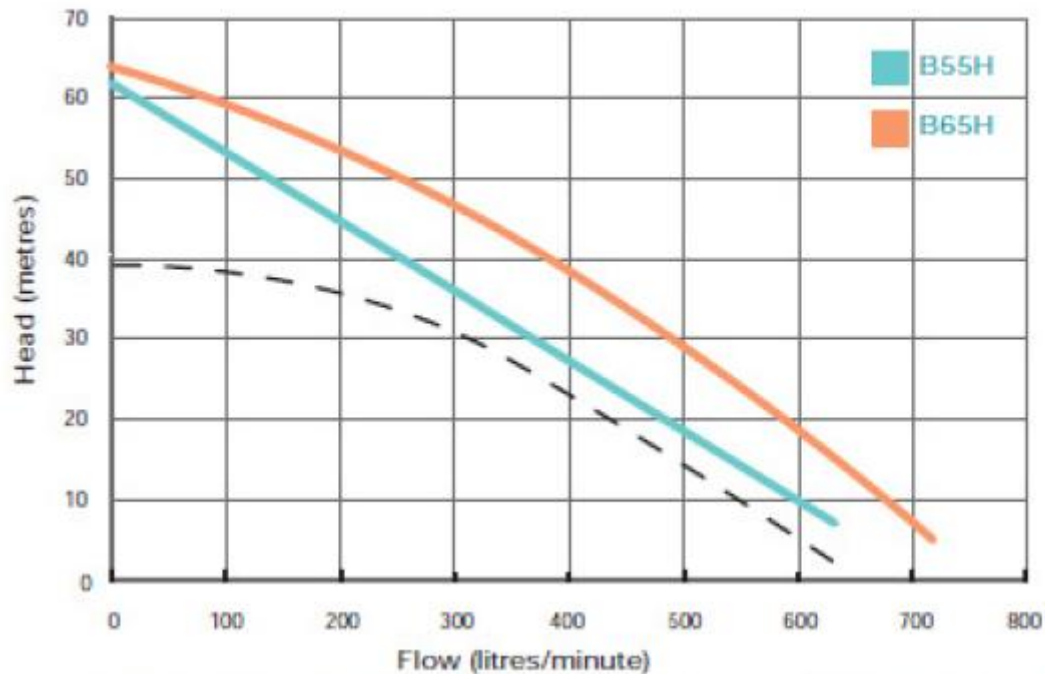


CROPLANDS PART NUMBERS: SHUB65HE – ONGA FIREFIGHTER HONDA GX200 ELEC

Pump Model	Hp Nominal	Engine Model	Suction (BSP) Male	3 Way Discharge (BSP) Male	Drain Plug (BSP) Male	Shaft Thread	Volume Fuel Tank	Fuel Type
B65HE	6.5	Honda GX200 (Electric Start)	2"	1",1",2"	1/4	5/8" UNF	3.6 Litres	Petrol

Blazemaster Single Performance (Petrol engines)

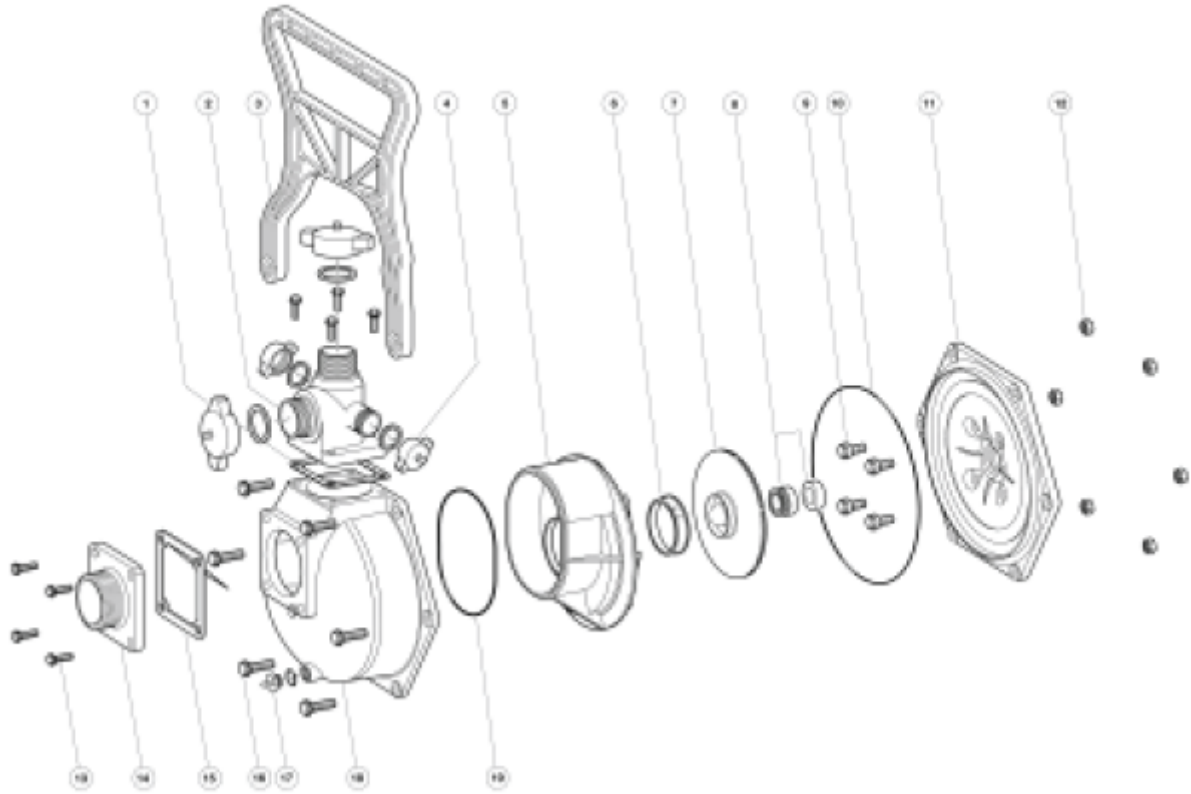


TECHNICAL DATA

Priming Port:	2" BSP
Max Working Pressure	1300 kpa
Water temp range	5°C – 40°C
Max amb temperature	40°C as per engine manufacturer's data

OPTIONAL ACCESSORIES

- Rollover Frames
 - Part Number 411010 [up to 9HP Petrol]
 - Part Number 411020 [9HP +, and diesel]
- Suction Strainer
 - Part Number 503271
- Ball Valves
 - 1" BSP Part Number 703033
 - 1 1/2" BSP Part Number 703031
 - 2" BSP Part Number 703030
- Fire Fighting Kits Part Number 701124 *comprising*
 - 1 X 4 metre grey PVC Suction Hose 38mm I.D,
 - 2 X 6 metre Yellow PVC Delivery Hose 20mm I.D,
 - 2 X Adjustable Fire Nozzles,
 - Brass Nuts & Tails
 - Suction Strainer PVC
 - Stainless Steel Hose Clamps.



Item	Description	Qty	Item	Description	Qty
1	Gasket - Discharge	1	10	O'ring - Casing	1
2	Flange - Discharge 1½" BSP	1	11	Yoke ¾" Blazemaster	1
	Flange - Discharge 2" BSP	1		Yoke 1" Blazemaster	1
3	Handle	1	12	Nuts - Casing (Set/12)	6
4	Cap & Washer 2" BSP	As Required		Nut - Bush 3/8" (Handle)	2
	Cap & Washer 1.5"BSP	As Required	13	Screw (Set/8) M8	8
	Cap & Washer 1"BSP	2	14	Flange - Suction 1 1/2" BSP	1
5	Diffuser	1		Flange - Suction 2" BSP	1
6	Wear Ring	1	15	Gasket - Clacker Assy	1
7	Impeller - ¾" Shaft	1	16	Bolts Casing	6 (4 if handle)
	Impeller - 5/8" Shaft	1		Bolts Casing	2
	Impeller - 1" Shaft	1	17	Plug ¼" Drain (Including Oring)	1
8	Seal - Mechanical ¾"	1	18	Casing	1
	Seal - Mechanical 1"	1	19	O'ring Difuser	1
	Spacer - Yoke Bolt (Not Shown)	4	NS	Strap - Cap (Triple)	1
9	Bolt & Seal Kit (Set/12)	4	NS	Anti Vibration Feet (Set/2)	1
	Bolt & Seal Kit (Set/12) B48Y Only	4	NS	Bracket Support	1

NOTE

**SOME PARTS ARE NON-STOCK
ITEMS AND MAY NEED TO BE
ORDERED**

HONDA GX200



Engine Type	Air-cooled 4-stroke OHV
Bore x Stroke	68 X 54 mm
Displacement	196 cm³
Net Power Output*	5.5 HP (4.1 kW) @ 3,600 rpm
Net Torque	9.1 lb-ft (12.4 Nm) @ 2,500 rpm
PTO Shaft Rotation	Counterclockwise (from PTO shaft side)
Compression Ratio	8.5:1
Lamp/Charge coil options	25W, 50W / 1A, 3A, 7A
Carburetor	Butterfly
Ignition System	Transistorized magneto
Starting System	Recoil Starter
Lubrication System	Splash
Governor System	Mechanical
Air cleaner	Dual element
Oil Capacity	0.63 US qt (0.6l)
Fuel Tank Capacity	3.3 U.S. qts (3.1 liters)
Fuel	Unleaded 86 octane or higher
Dry Weight	35 lbs. (16.1 kg)

Dimensions

Length (min)	12.6" (321mm)
Width (min)	14.8" (376mm)
Height (min)	13.6" (346 mm)