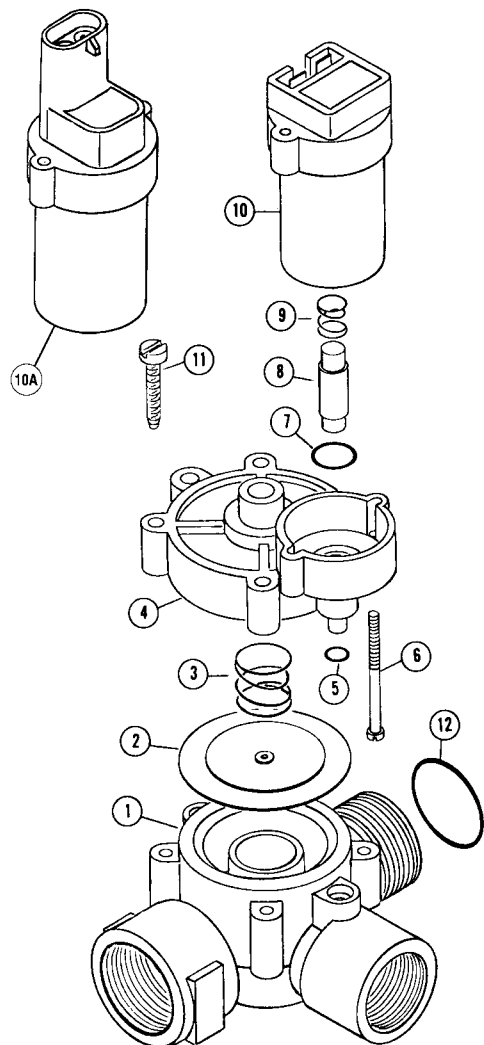


# No. 1999A

Solenoid Valve - 18 GPM, 175 PSI, 12 Volt. DC.



## PARTS LIST

Ref.	Part No.	Description	No. Req.
1	1962	Valve Body.....	1
2	*1974	Viton Diaphragm Assembly, Standard ....	1
2	(1)2109	Aflas Diaphragm Assembly, Optional ....	1
3	(1)*1975	Spring .....	1
4	1963	Valve Cover .....	1
5	(1)*1976	Viton "O" Ring 010 .....	1
6		6-32 x 2 <sup>5</sup> / <sub>8</sub> Screw w/Hex Nut .....	2
7	(1)*1977	Viton "O" Ring 014 .....	1
8	*2239	Plunger w/Viton Seat, Standard.....	1
8	(1)2240	Plunger w/Aflas Seat, Optional.....	1
9	(1)*1979	Plunger Spring .....	1
10	2515	Coil Assembly .....	1
10A	2520	Coil Assembly, Weather Pack .....	1
11		No. 8 x 1 <sup>1</sup> / <sub>2</sub> Screw.....	4
12	2168	"O" Ring 022 .....	1
	2517	Viton Repair Kit – consists of items marked *	
	2518	Aflas Repair Kit – consists of items marked <sup>(1)</sup>	

## SPECIFICATIONS

- Valve Housing .....Glass Filled Nylon
- Wetted Metal Parts .....304 and 430 Stainless Steel
- Diaphragm, Seat and Seals.....Viton, Standard, Aflas, Optional
- Coil.....Epoxy Encapsulated
- Terminals.....<sup>1</sup>/<sub>4</sub>" Male Tabs or Weather Pack
- Voltage .....12 Volt. DC. (Other Available)
- Current.....1.1 AMP at 12 Volt.
- Pressure .....175 PSI Max., 10 PSI Min.
- Flow.....0-18 GPM 8 CV
- Actuating Pressure.....5 PSI

**TEXAS INDUSTRIAL REMCOR, INC.**

Box 3704 • Temple, Texas 76505 • (254) 982-4236